

# Wichita Housing Market Overview

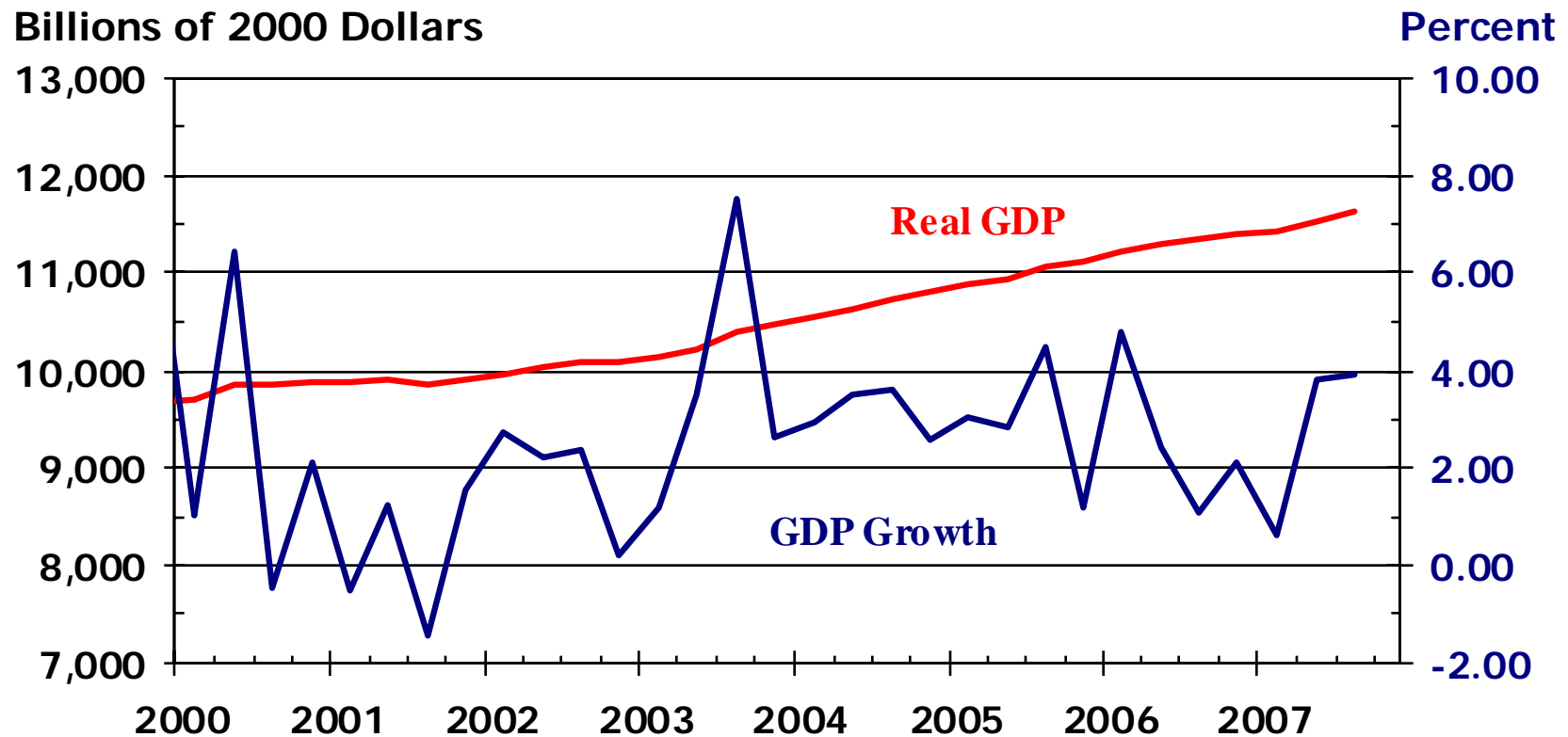
*Dr. Stanley D. Longhofer*  
*November 12, 2007*



WICHITA STATE UNIVERSITY



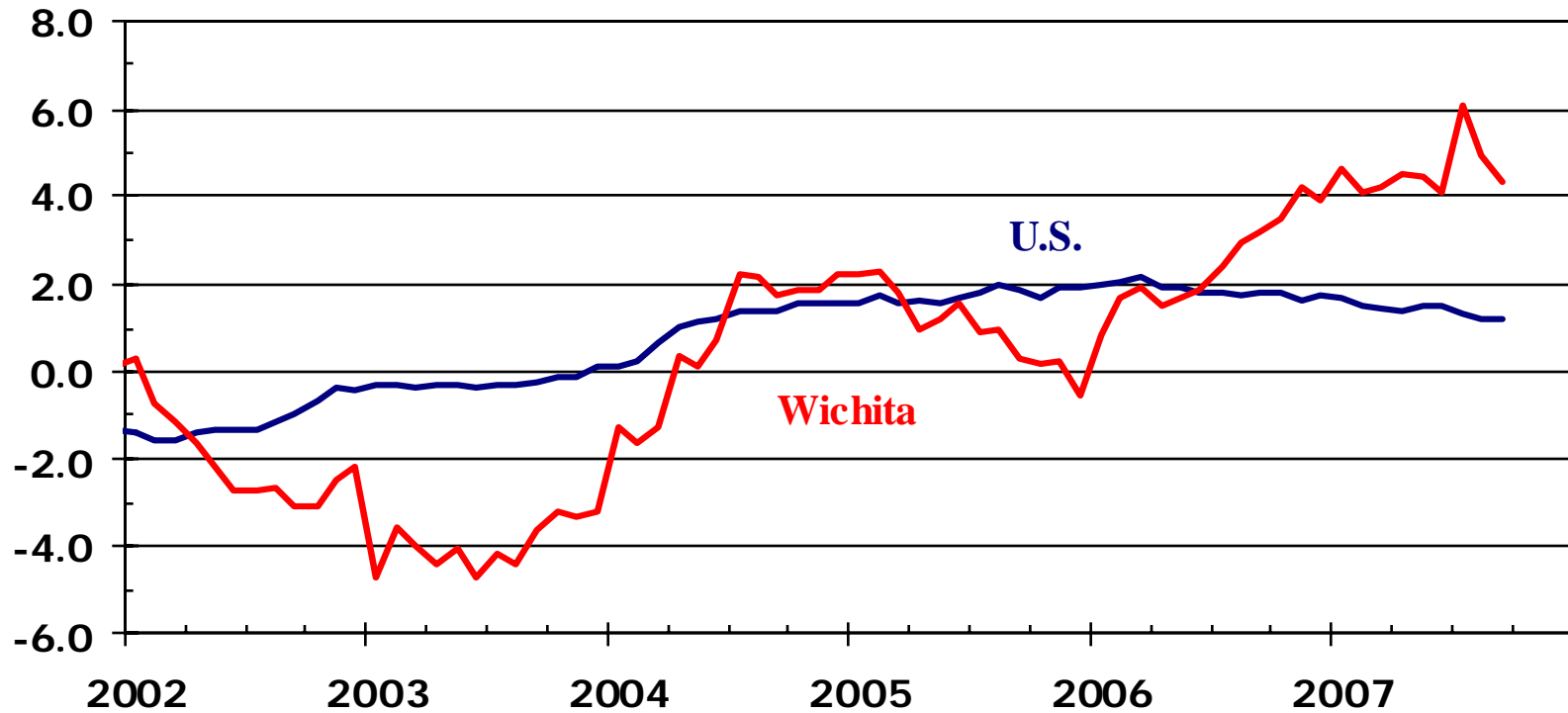
# Real Gross Domestic Product



Source: Bureau of Economic Analysis

# Employment Growth

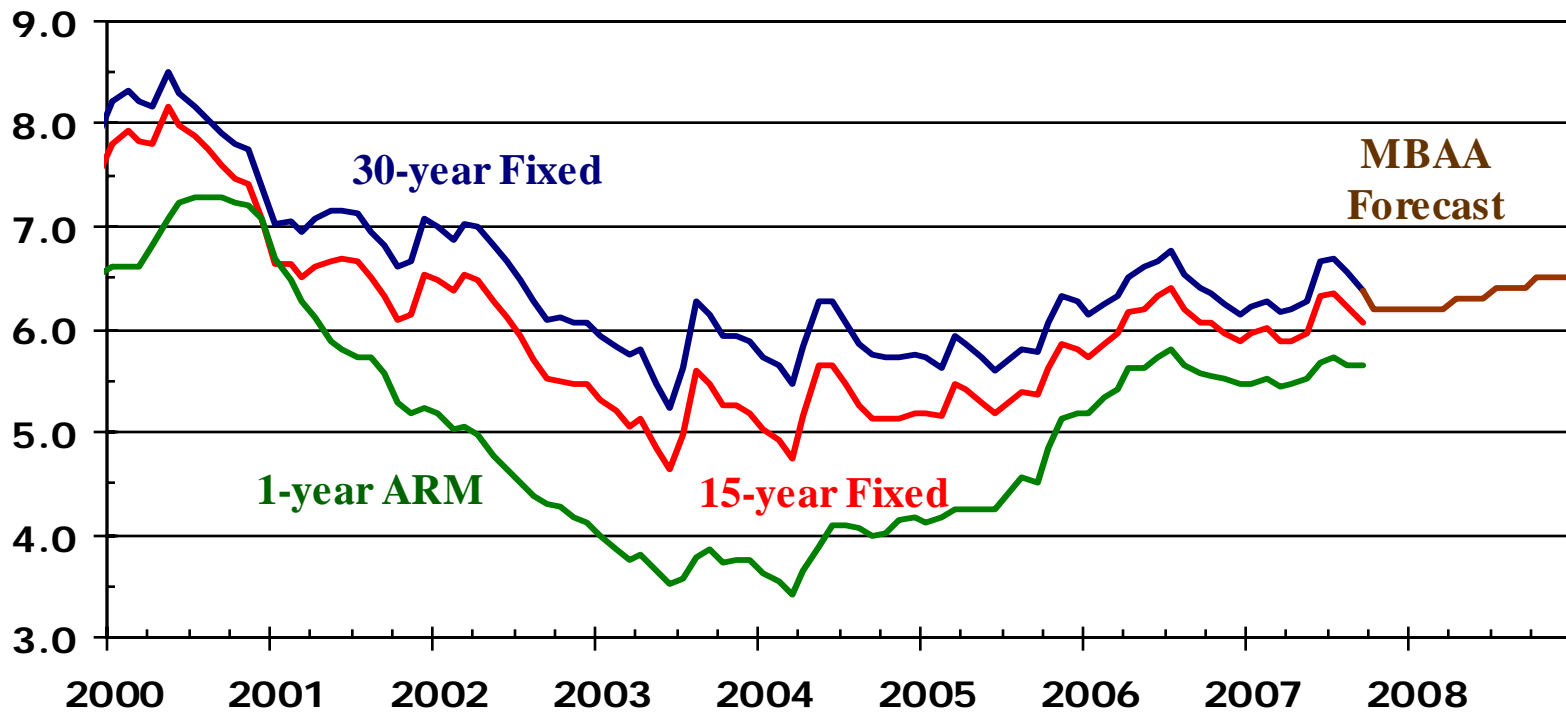
Year-over-Year Percentage Change



Sources: Kansas Department of Human Resources;  
U.S. Bureau of Labor Statistics

# Mortgage Rates

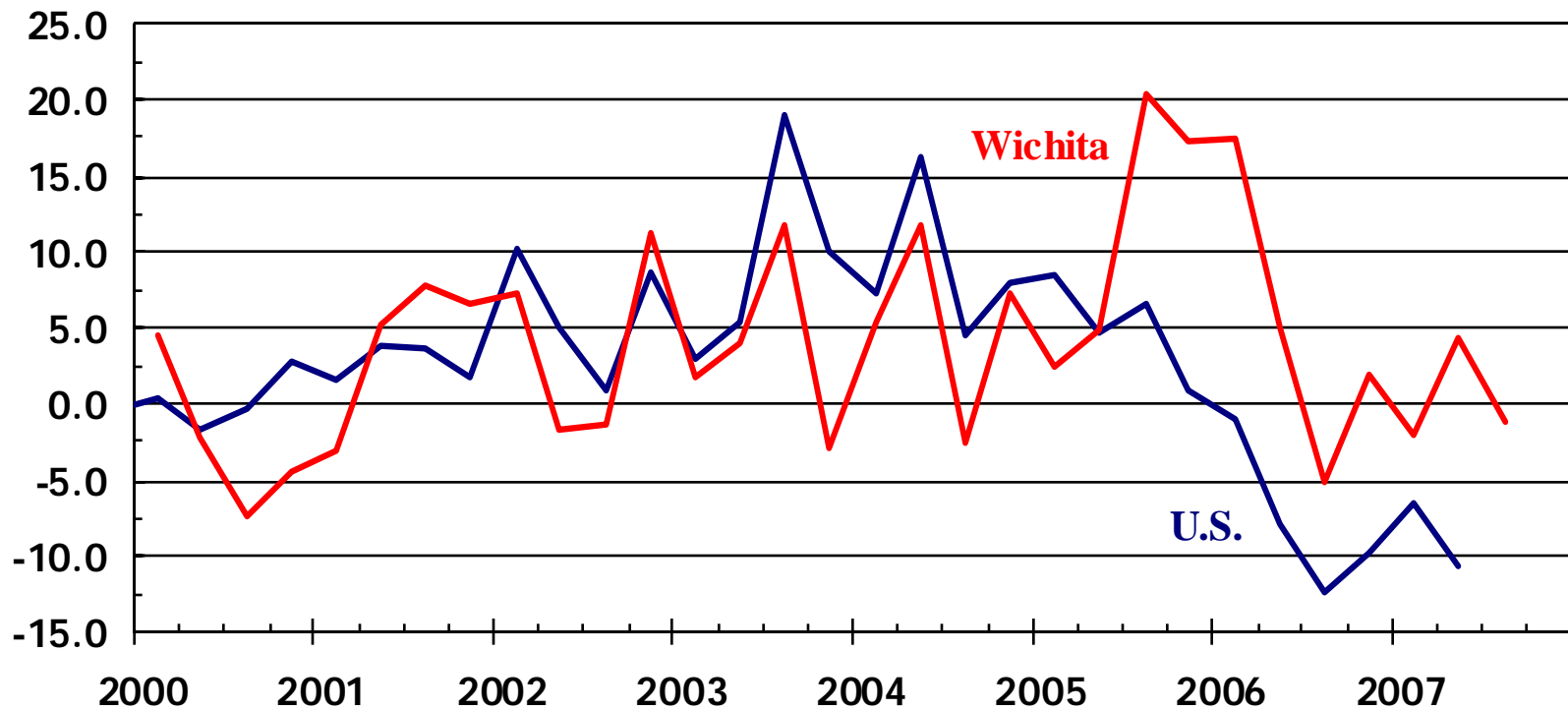
Percent



Sources: Freddie Mac;  
Mortgage Bankers Association of America

# Existing Home Sales

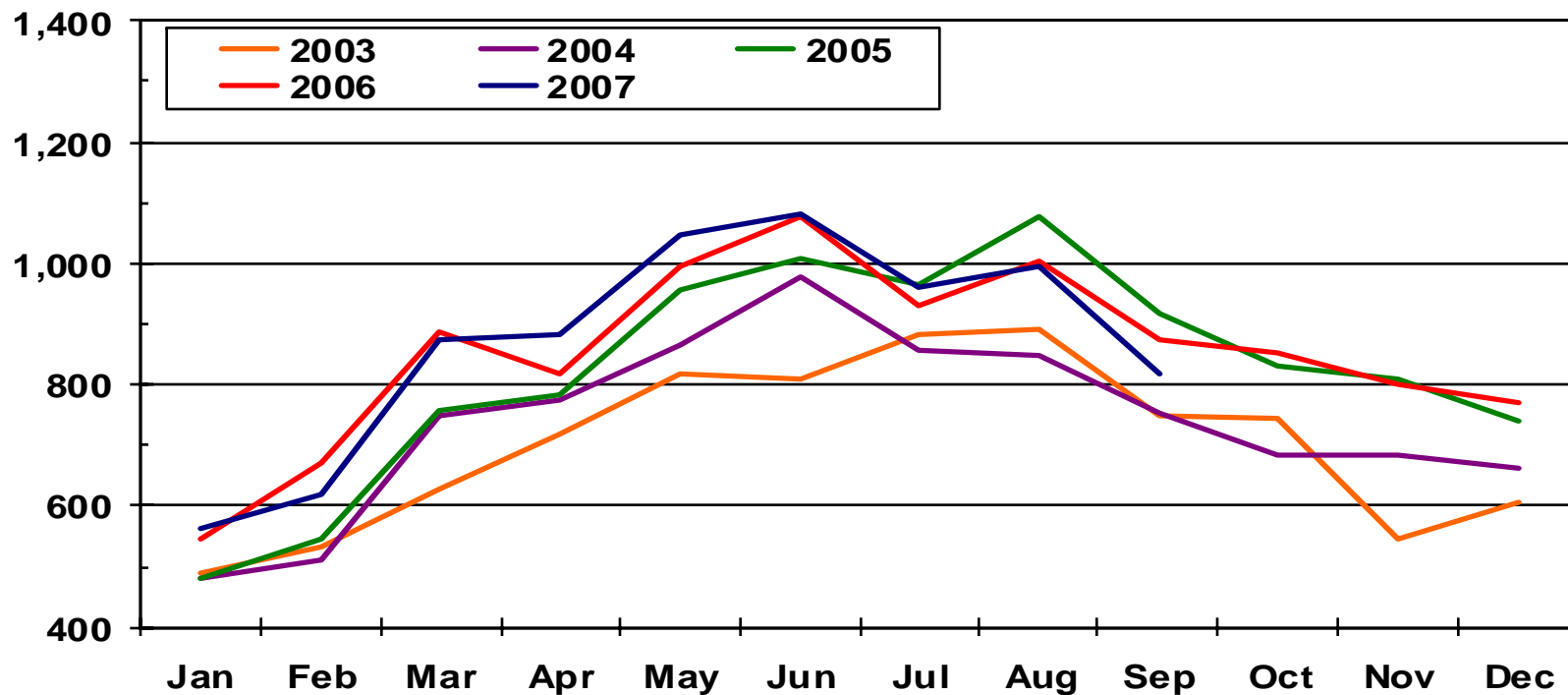
Year-over-year Percentage Change



Sources: NAR; SCK MLS

# Wichita Existing Home Sales

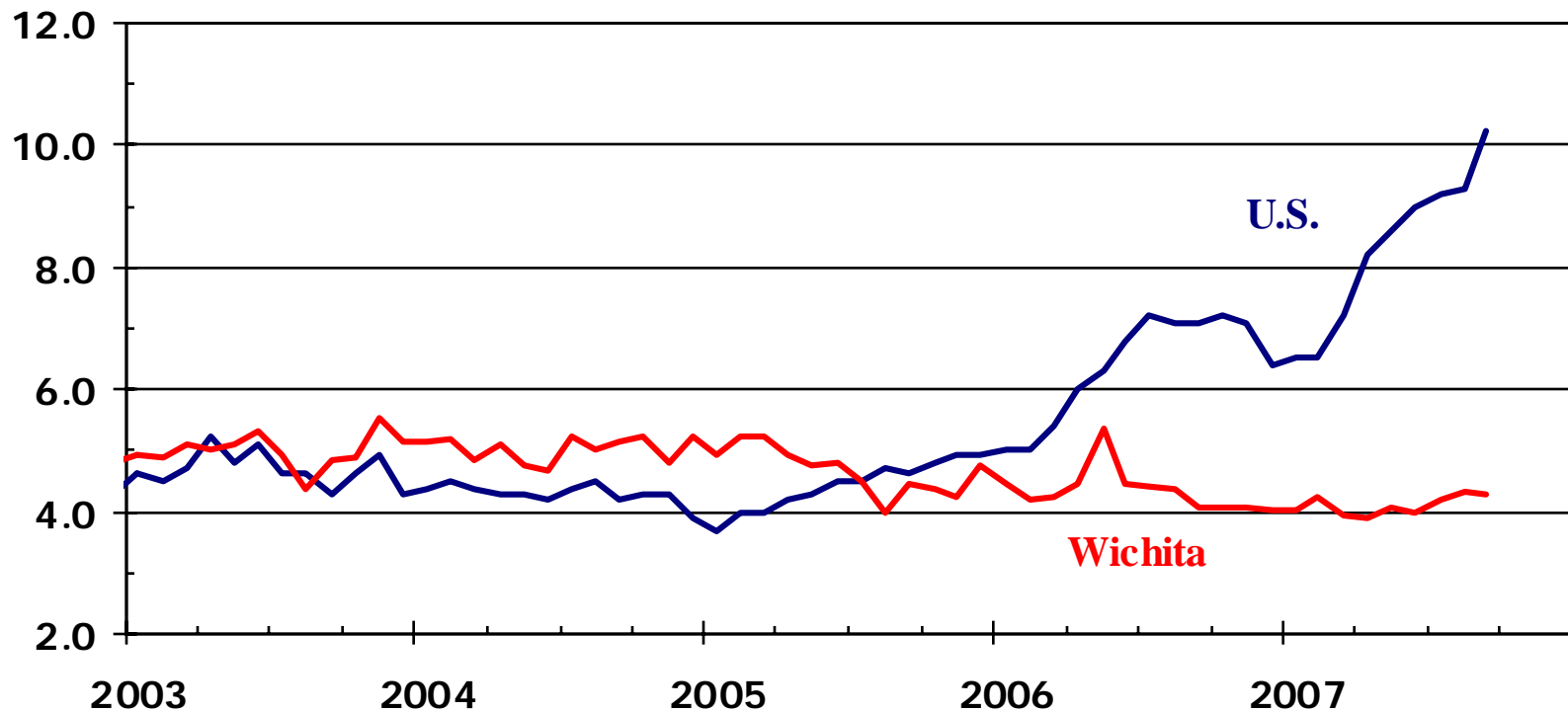
Number of Sales



Source: SCKMLS Statistics

# Inventory of Existing Homes Available for Sale

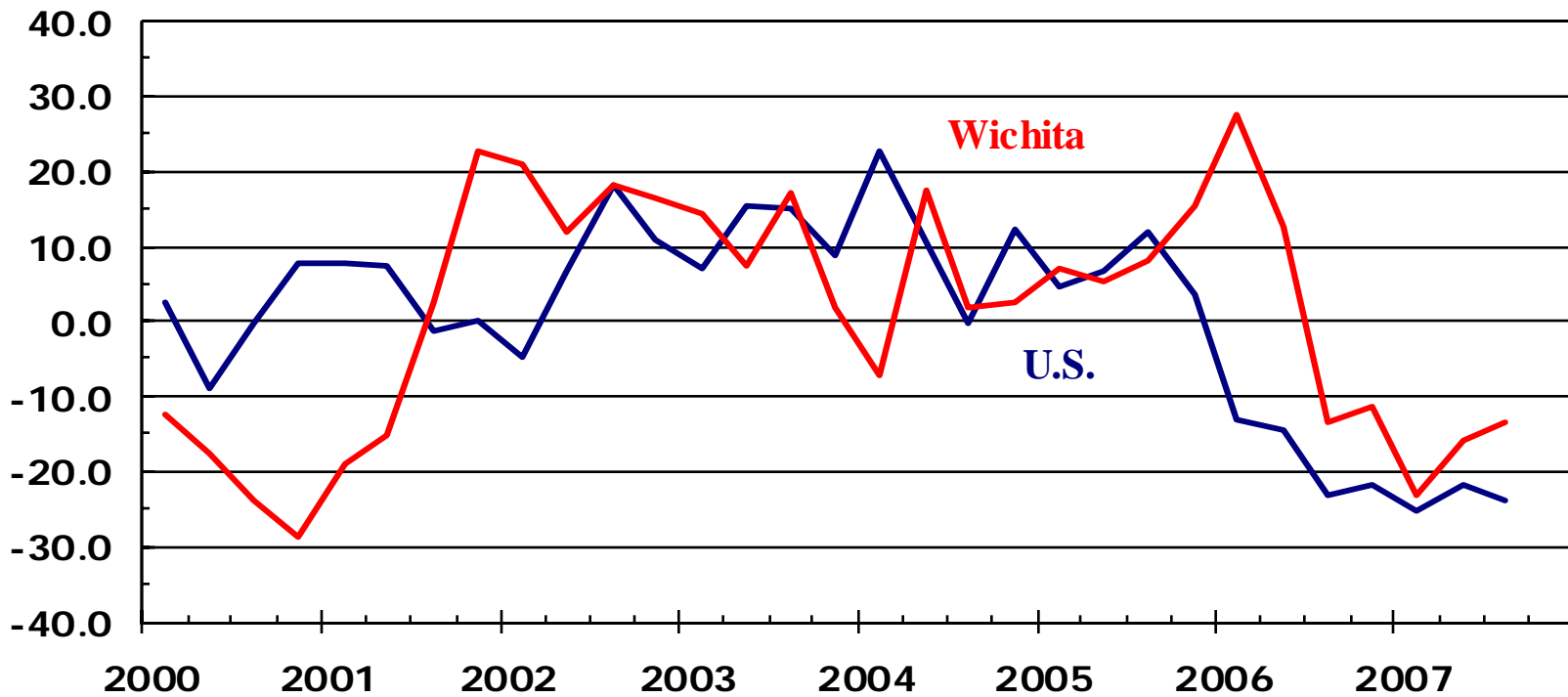
Months Supply (SA)



Sources: NAR; WSU Center for Real Estate  
using data from SCK MLS

# New Home Sales

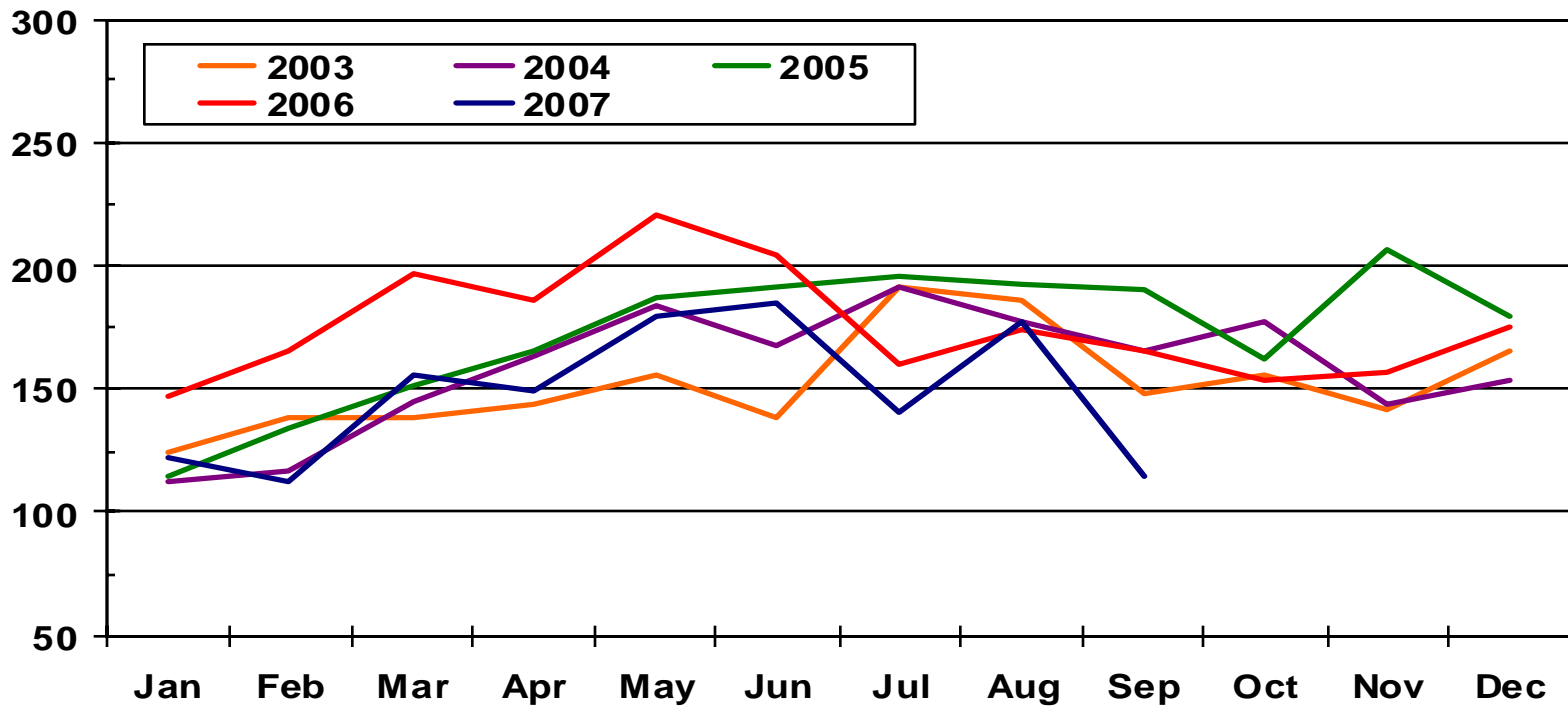
Year-over-year Percentage Change



Sources: HUD; SCK MLS

# Wichita New Home Sales

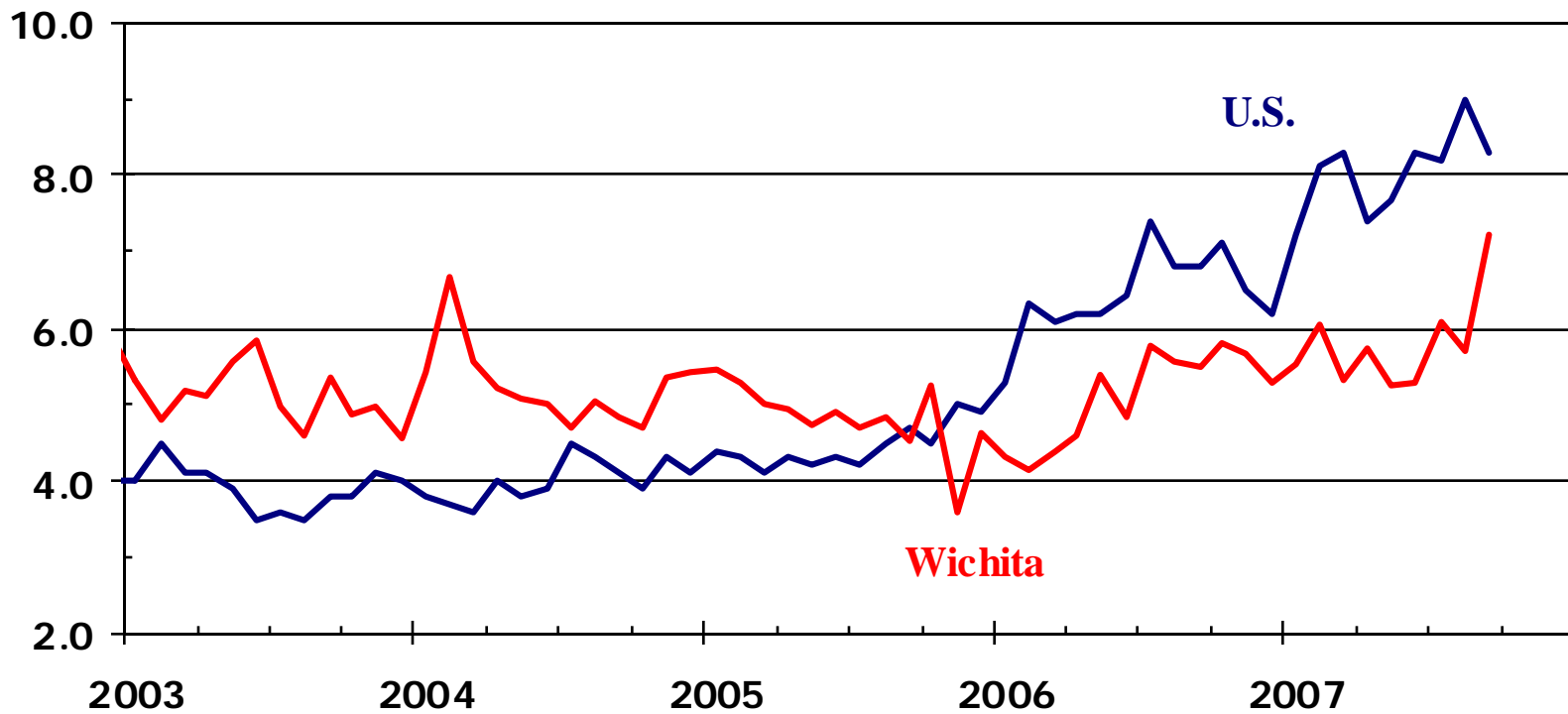
Number of Sales



Source: SCK MLS

# Inventory of New Homes Available for Sale

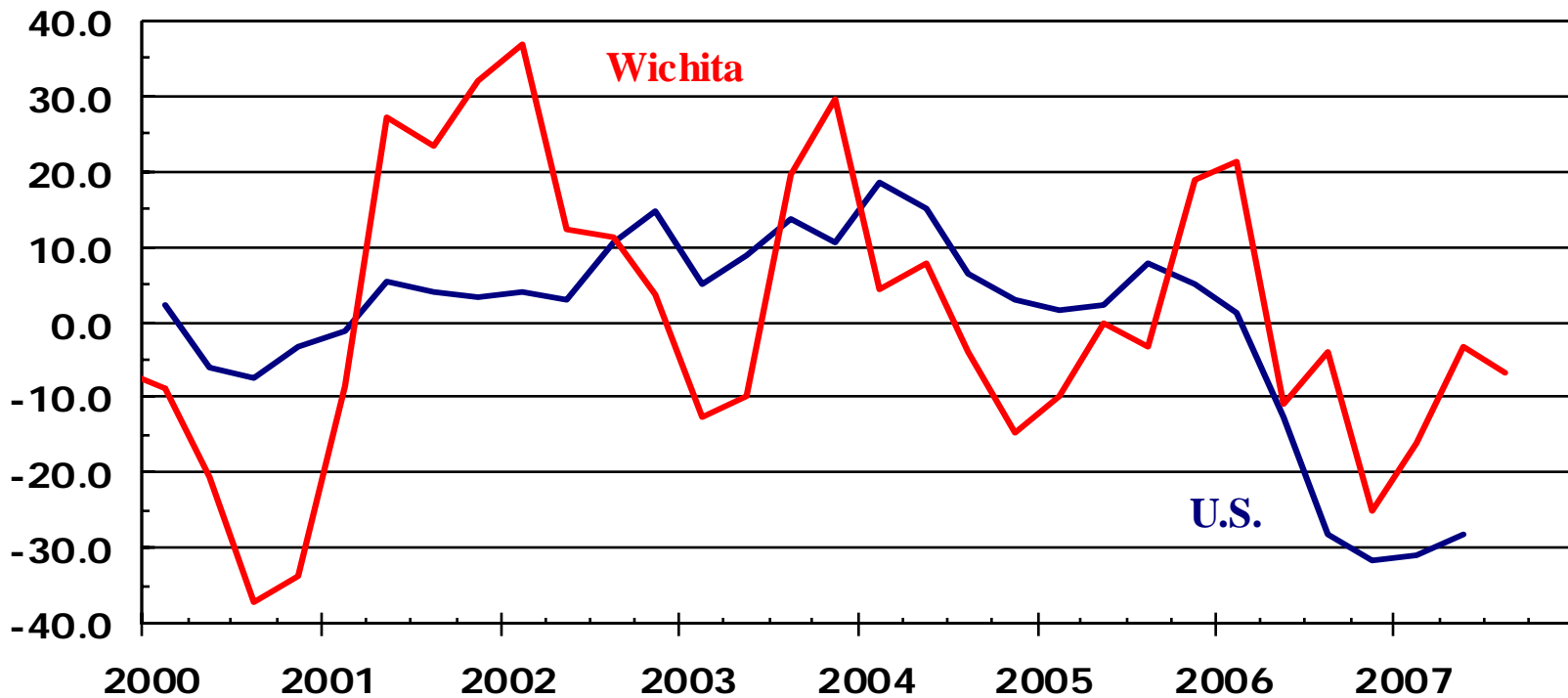
Months Supply (SA)



Sources: NAR; WSU Center for Real Estate  
using data from SCK MLS

# New Home Construction

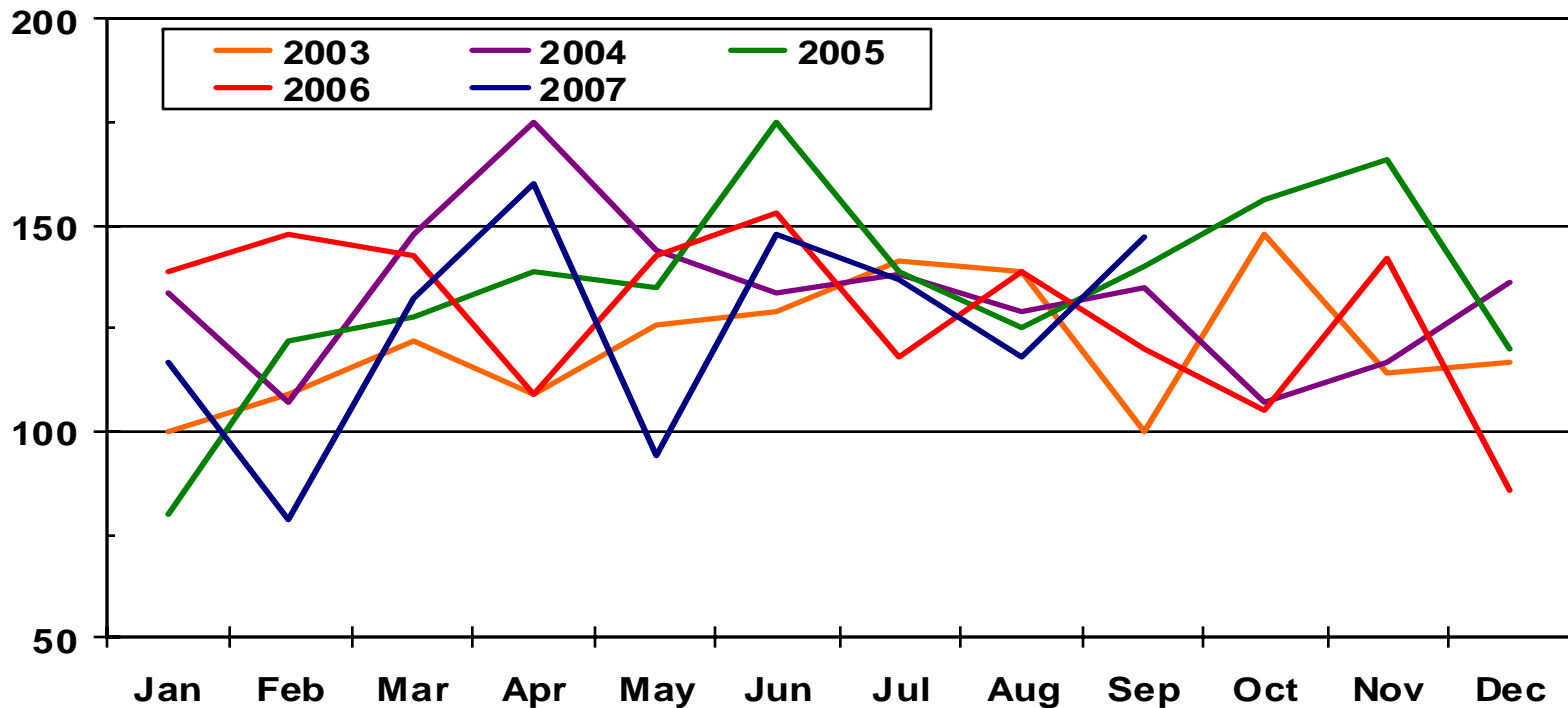
Year-over-year Percentage Change in Single-Family Building Permits



Sources: HUD; WABA

# Wichita Building Permits

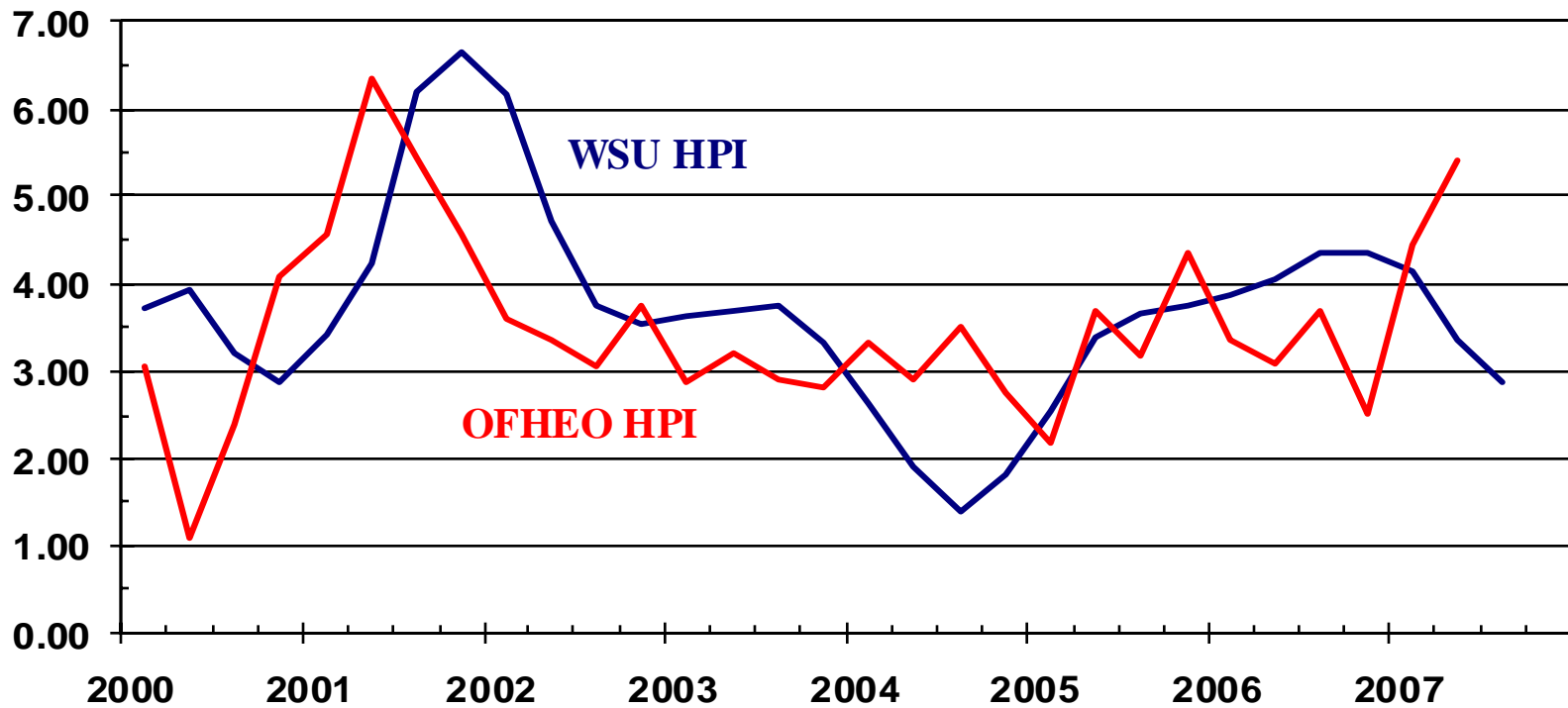
Number of Permits



Source: WABA

# Sedgwick County Home Price Appreciation

Year-over-year Percentage Change

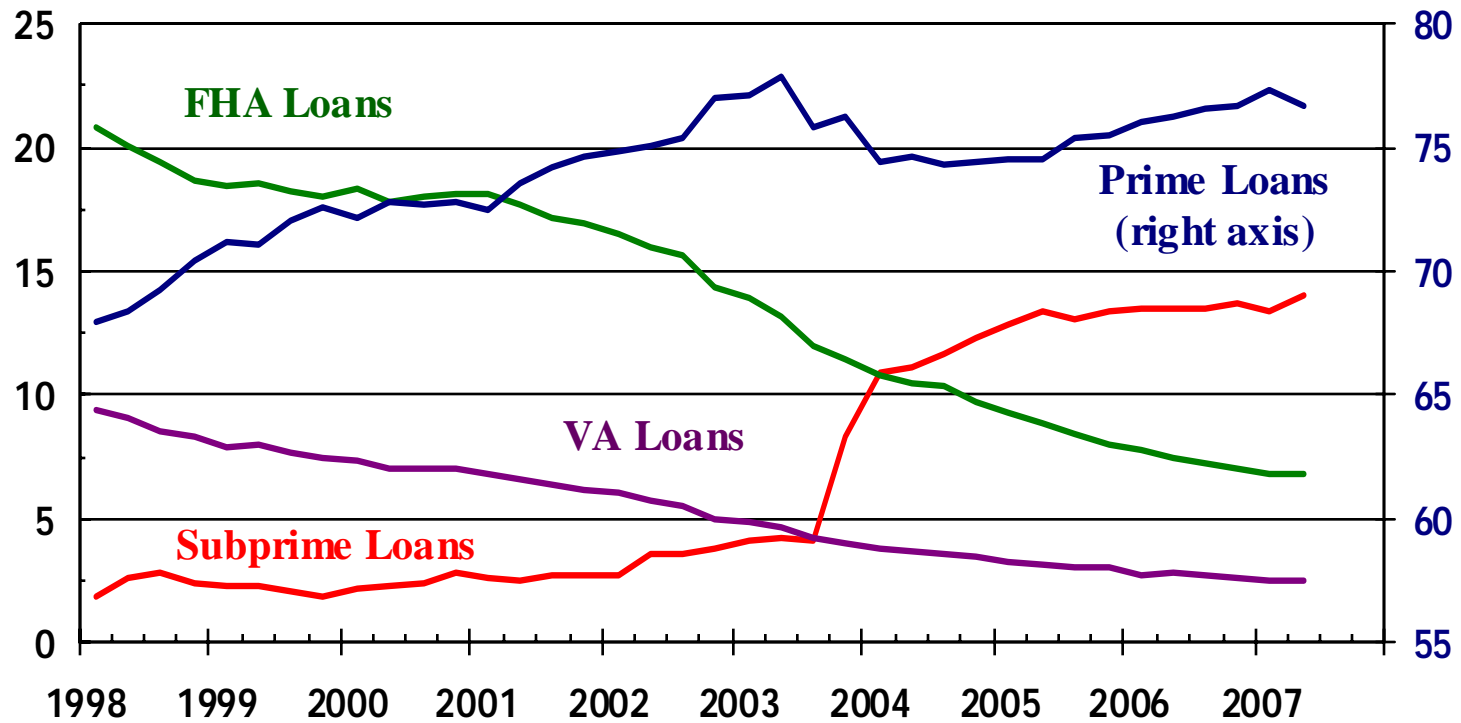


Sources: WSU Center for Real Estate;  
Office of Federal Housing Enterprise Oversight

# The Growth of Subprime Lending

Percent of Loans Serviced

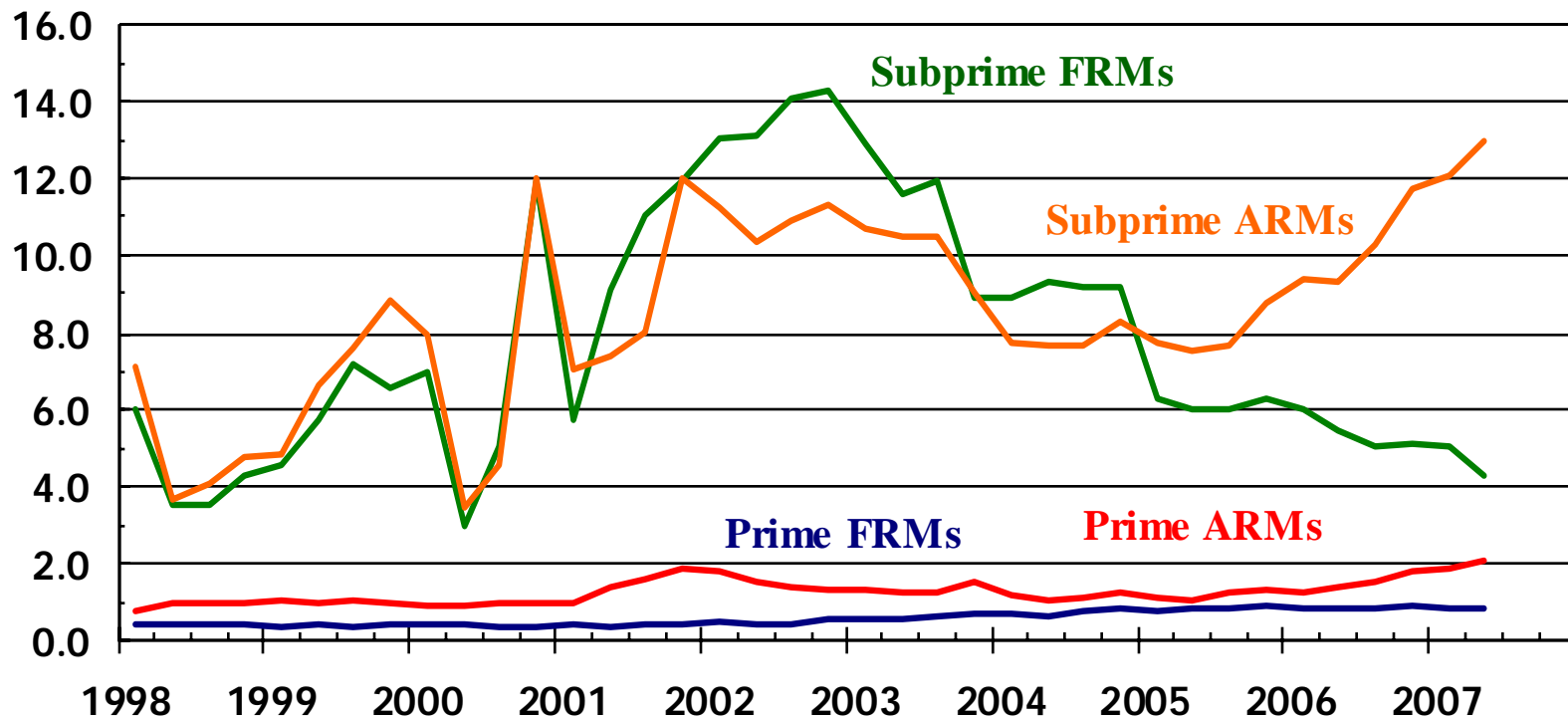
Percent of Loans Serviced



Source: MBAA

# KS Severely Delinquent Loans

Percent of Loans Serviced



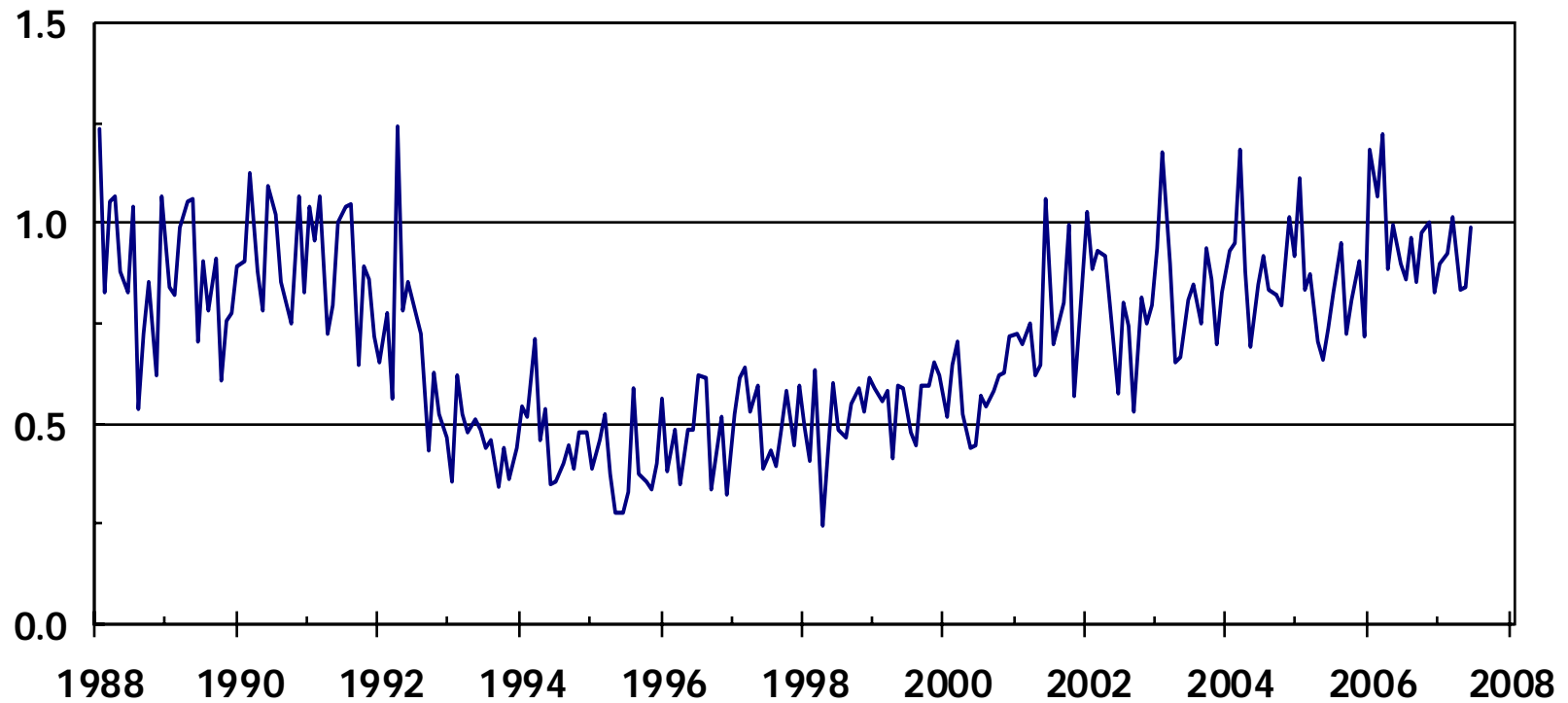
**ARMs make up nearly 40% of subprime loans in KS but about 10% of all prime loans**

Source: MBAA



# Sedgwick County Foreclosure Rate

Foreclosures per 1,000 Mortgages over Past Five Years



Source: WSU Center for Real Estate using data from the Sedgwick County Register of Deeds

# Wichita State University Center for Real Estate

*Laying a Foundation for  
Real Estate in Kansas*



WICHITA STATE UNIVERSITY

