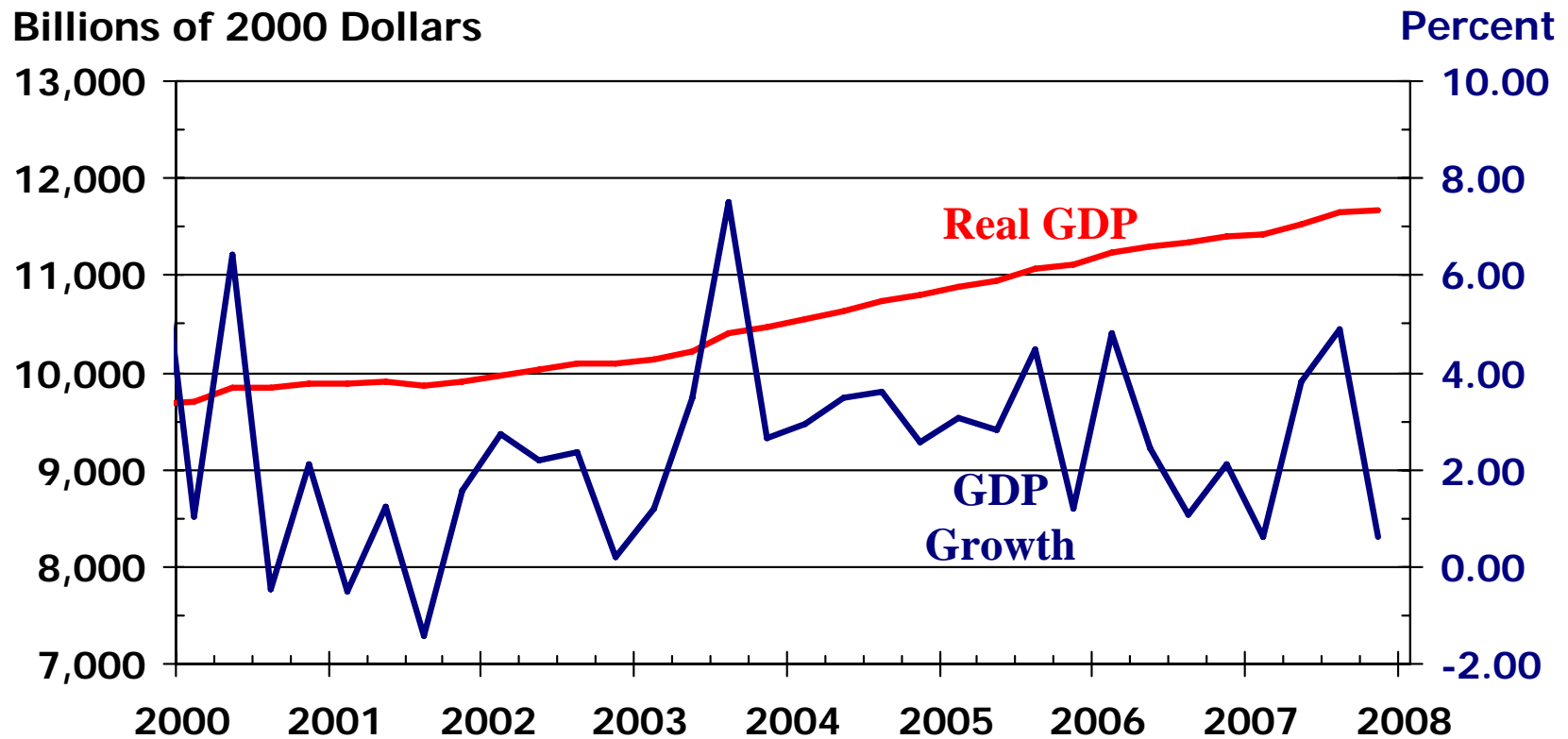


# Kansas Housing Markets Review & Outlook

*Kansas Association of Realtors  
March 6, 2008*



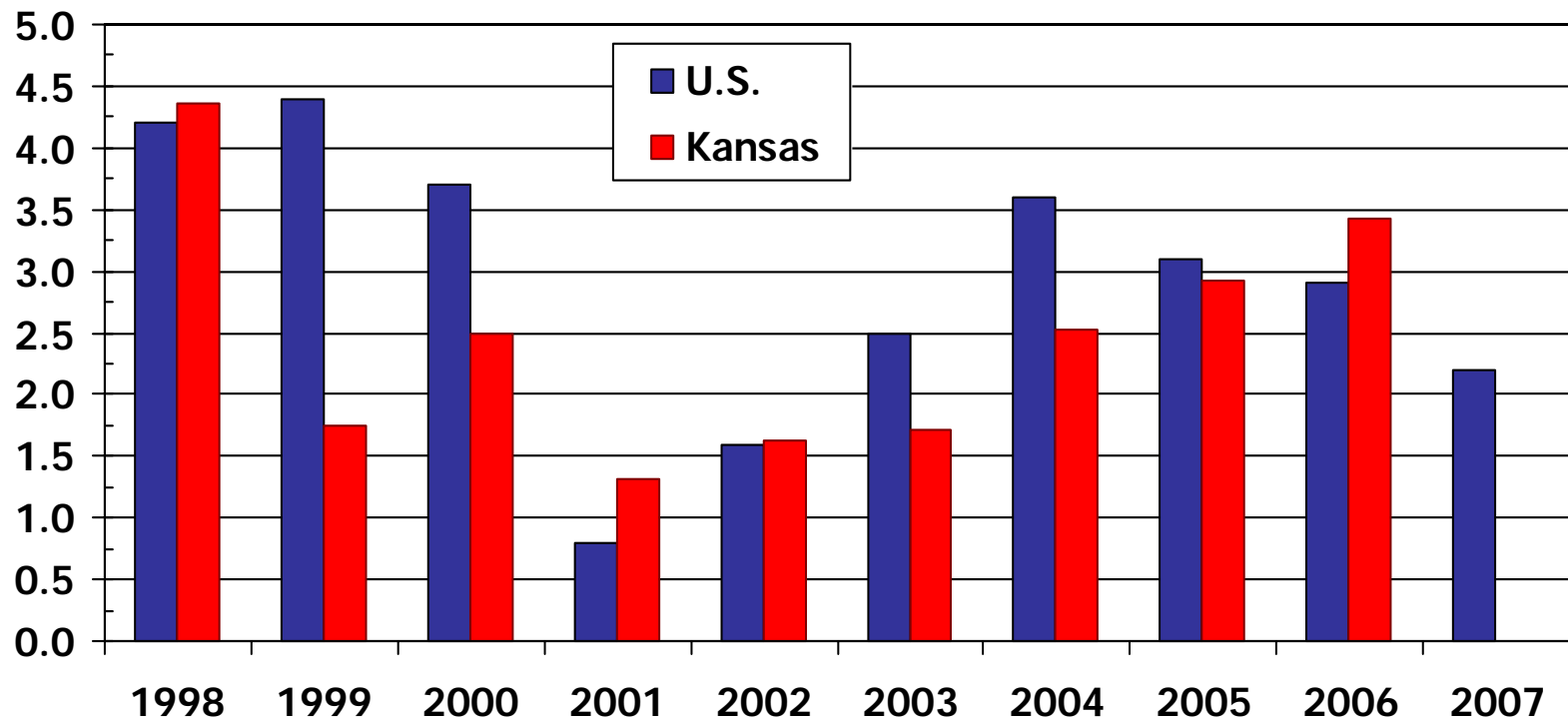
# Real Gross Domestic Product



Source: Bureau of Economic Analysis

# Real GDP Growth

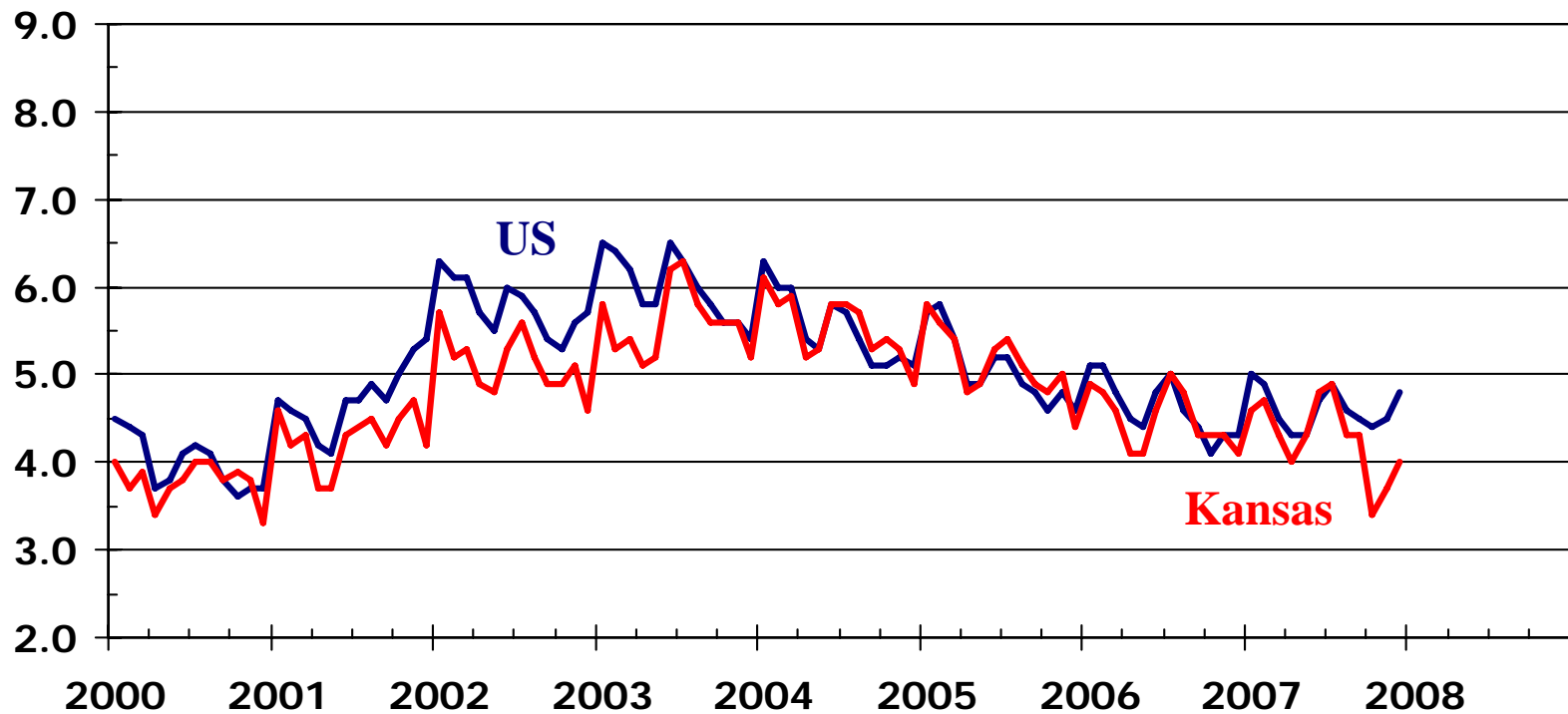
Percent



Source: Bureau of Economic Analysis

# Unemployment Rate

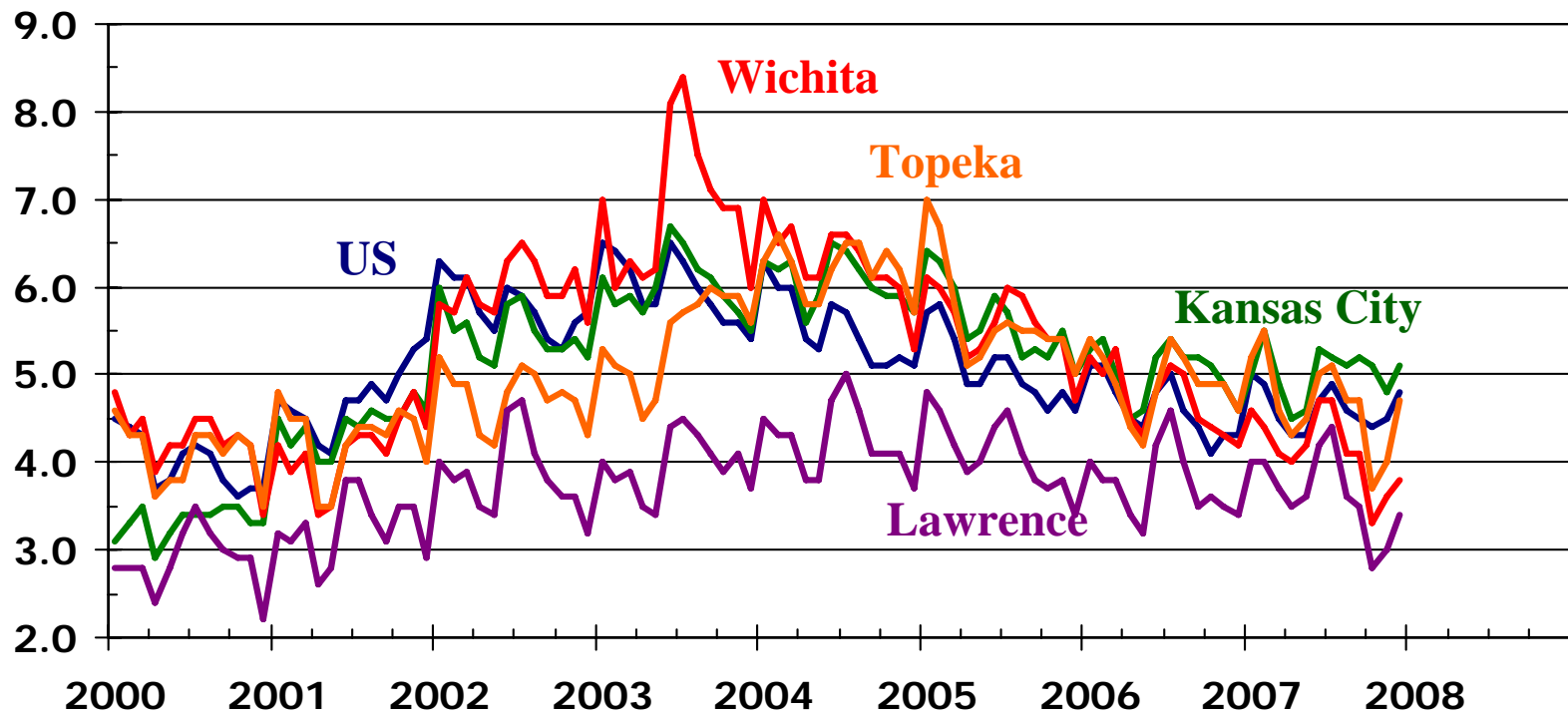
Percent



Sources: Kansas Department of Human Resources;  
U.S. Bureau of Labor Statistics

# Unemployment Rate

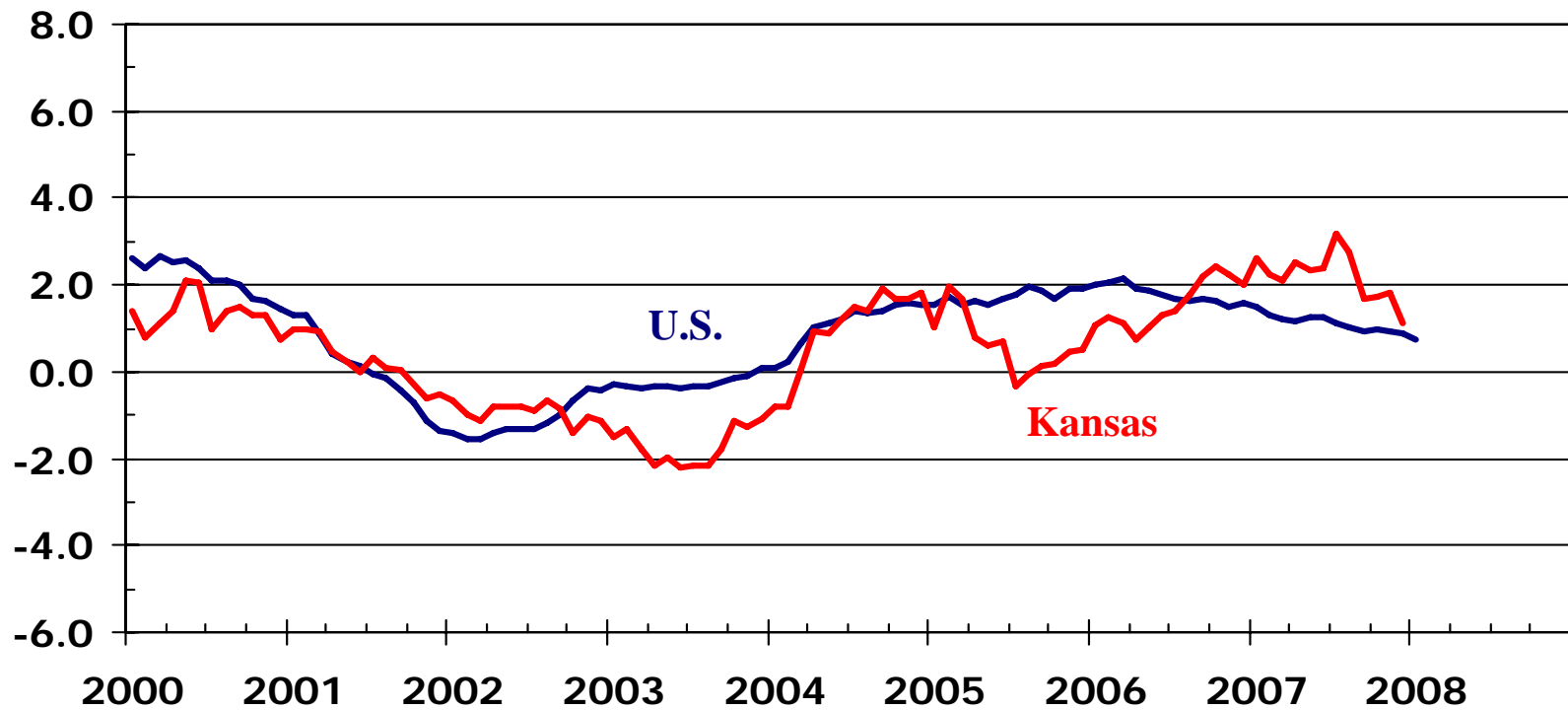
Percent



Sources: Kansas Department of Human Resources;  
U.S. Bureau of Labor Statistics

# Employment Growth

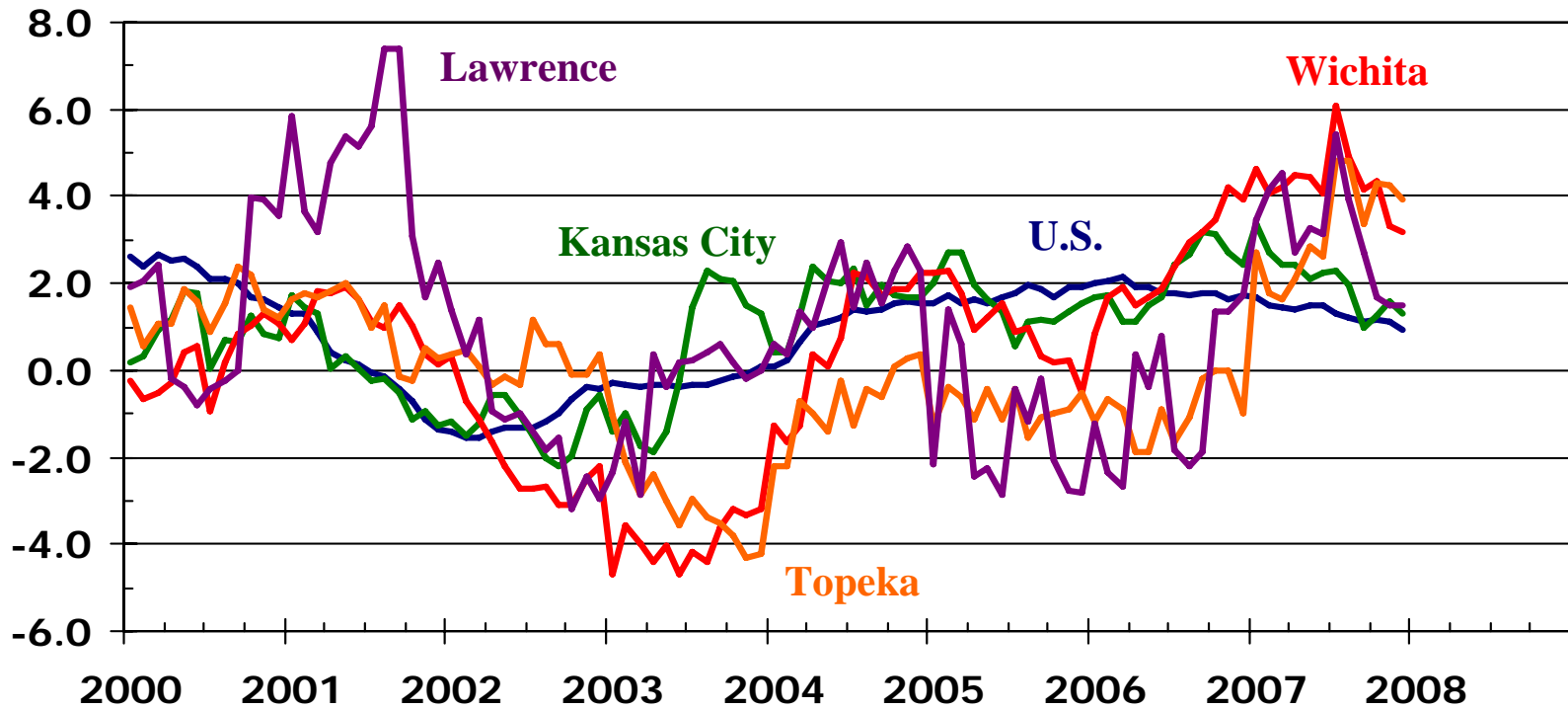
Year-over-Year Percentage Change



Sources: Kansas Department of Human Resources;  
U.S. Bureau of Labor Statistics

# Employment Growth

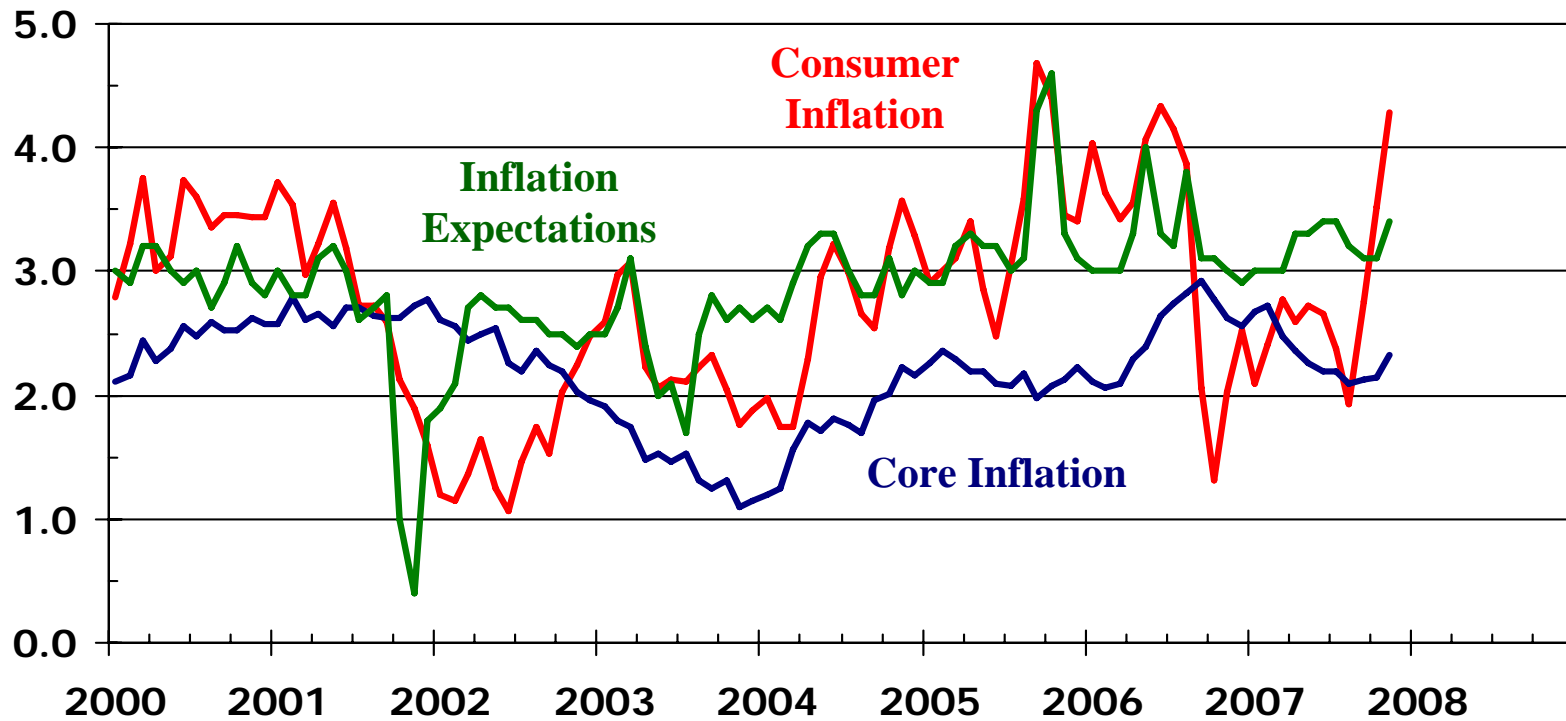
Year-over-Year Percentage Change



Sources: Kansas Department of Human Resources;  
U.S. Bureau of Labor Statistics

# Consumer Inflation

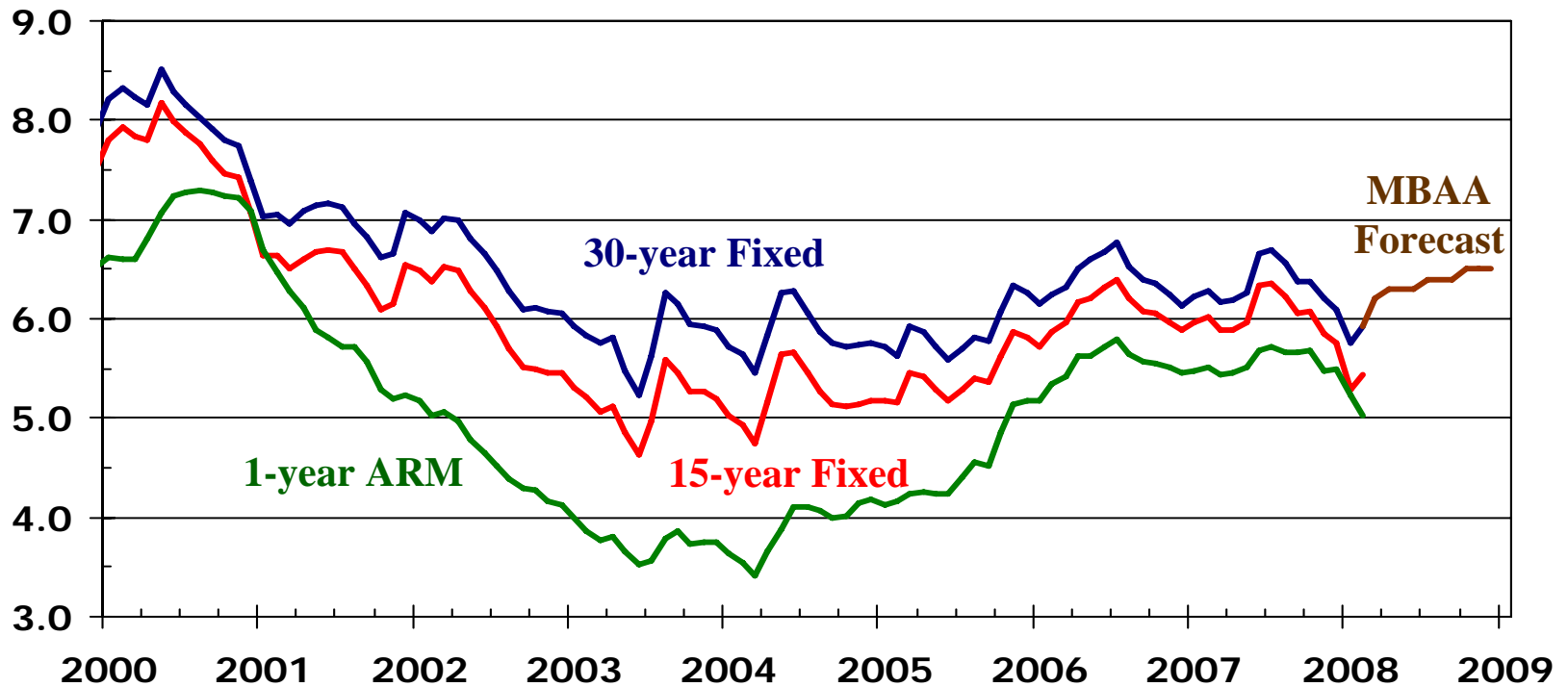
Percent



Sources: U.S. Bureau of Labor Statistics;  
University of Michigan

# Mortgage Rates

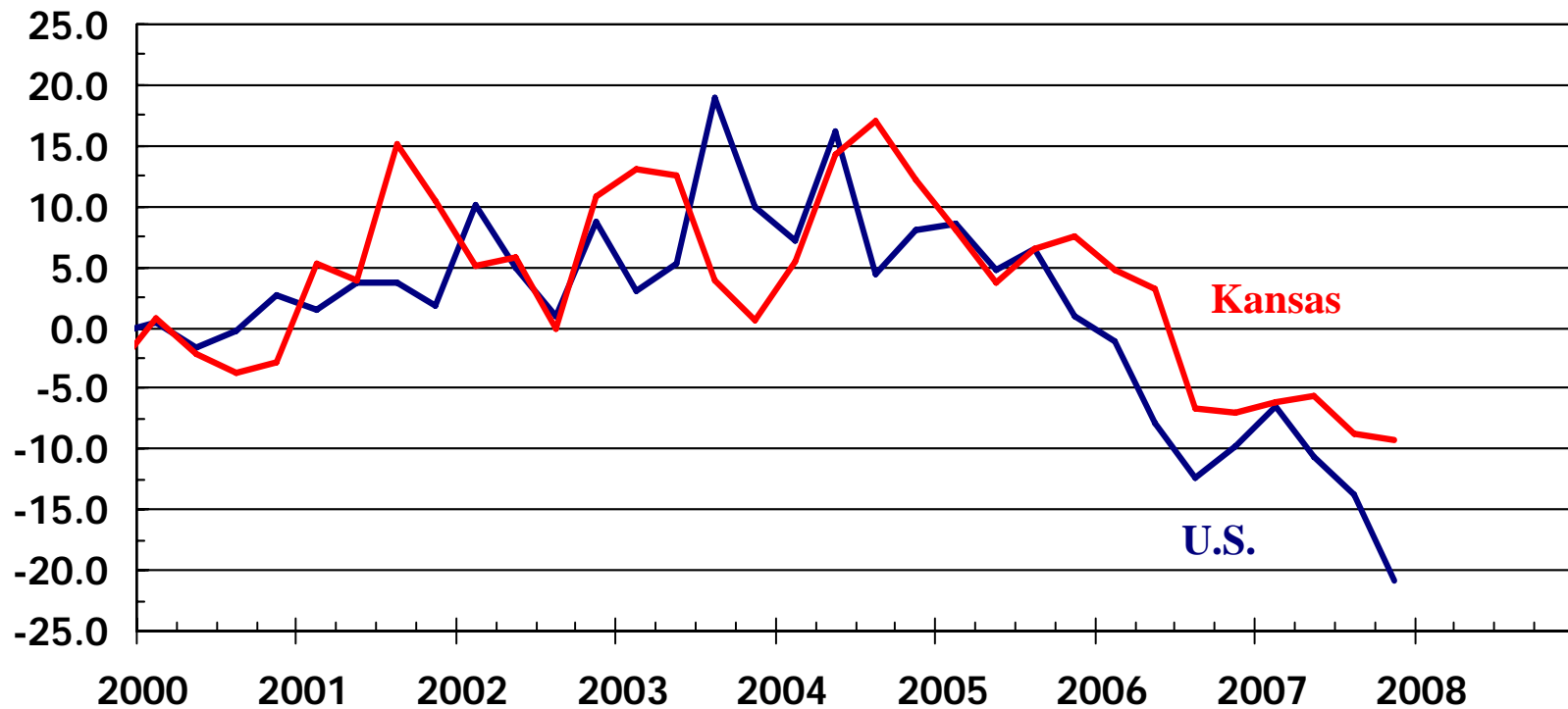
Percent



Sources: Freddie Mac;  
Mortgage Bankers Association of America

# Existing Home Sales

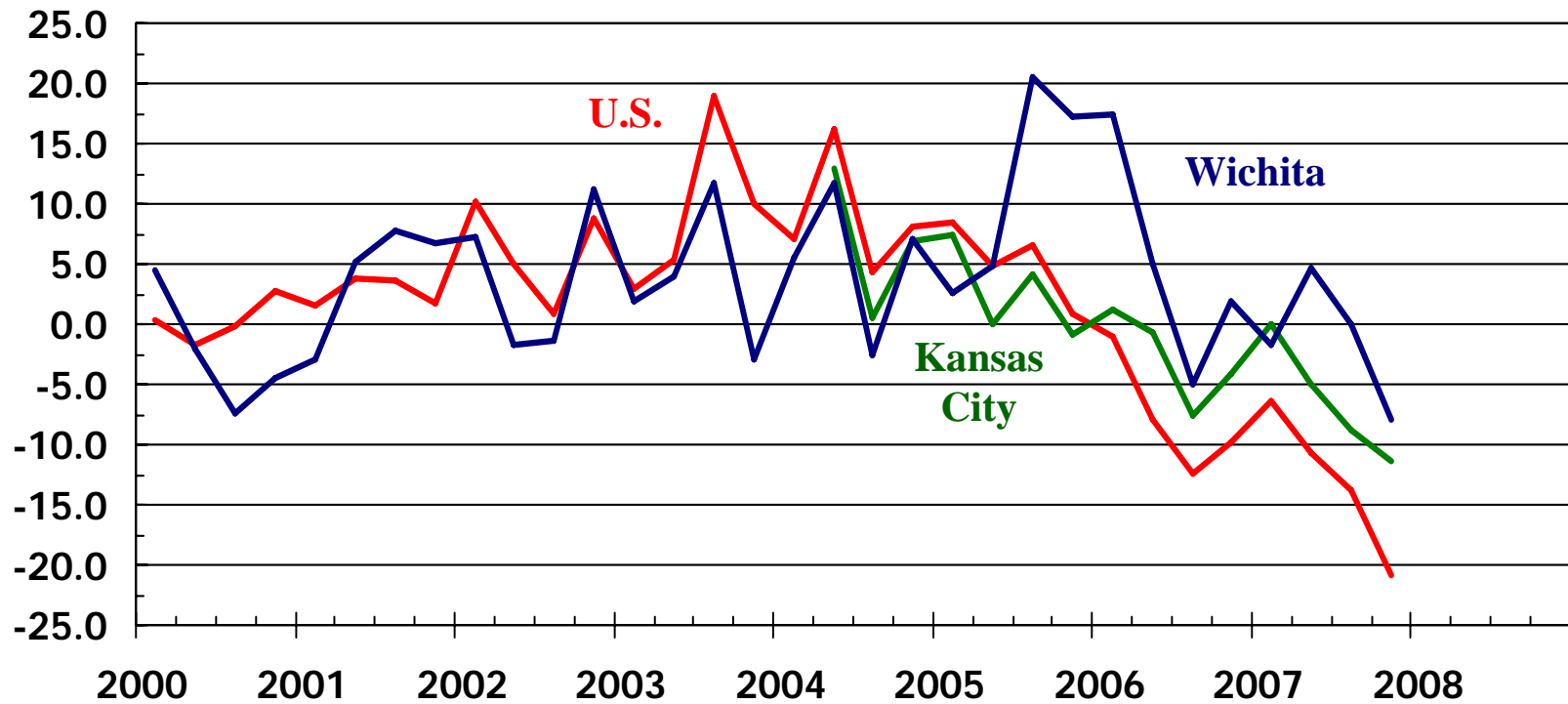
Year-over-year Percentage Change



Source: NAR

# Existing Home Sales

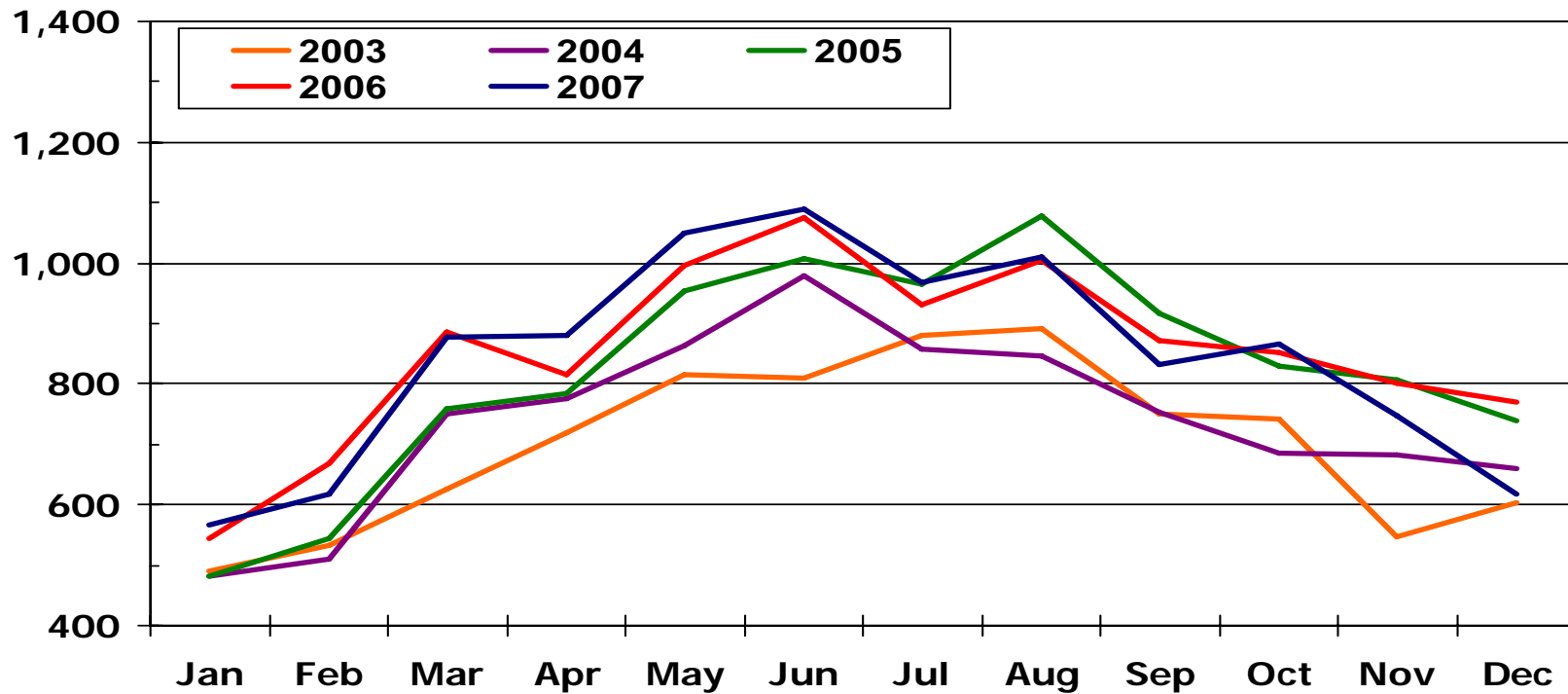
Year-over-year Percentage Change



Sources: NAR; KCRAR; SCK MLS

# Wichita Area Existing Home Sales

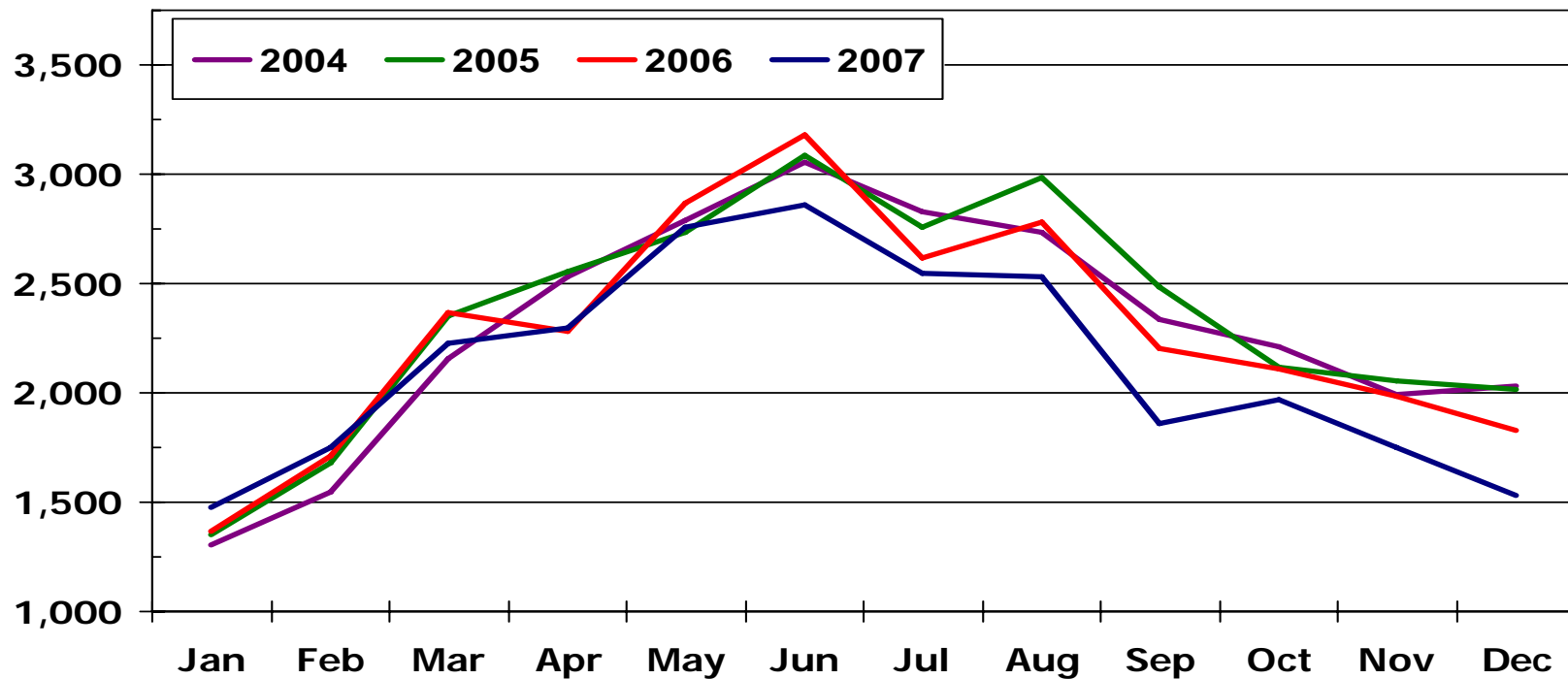
Number of Sales



Source: SCKMLS Statistics

# Kansas City Area Existing Home Sales

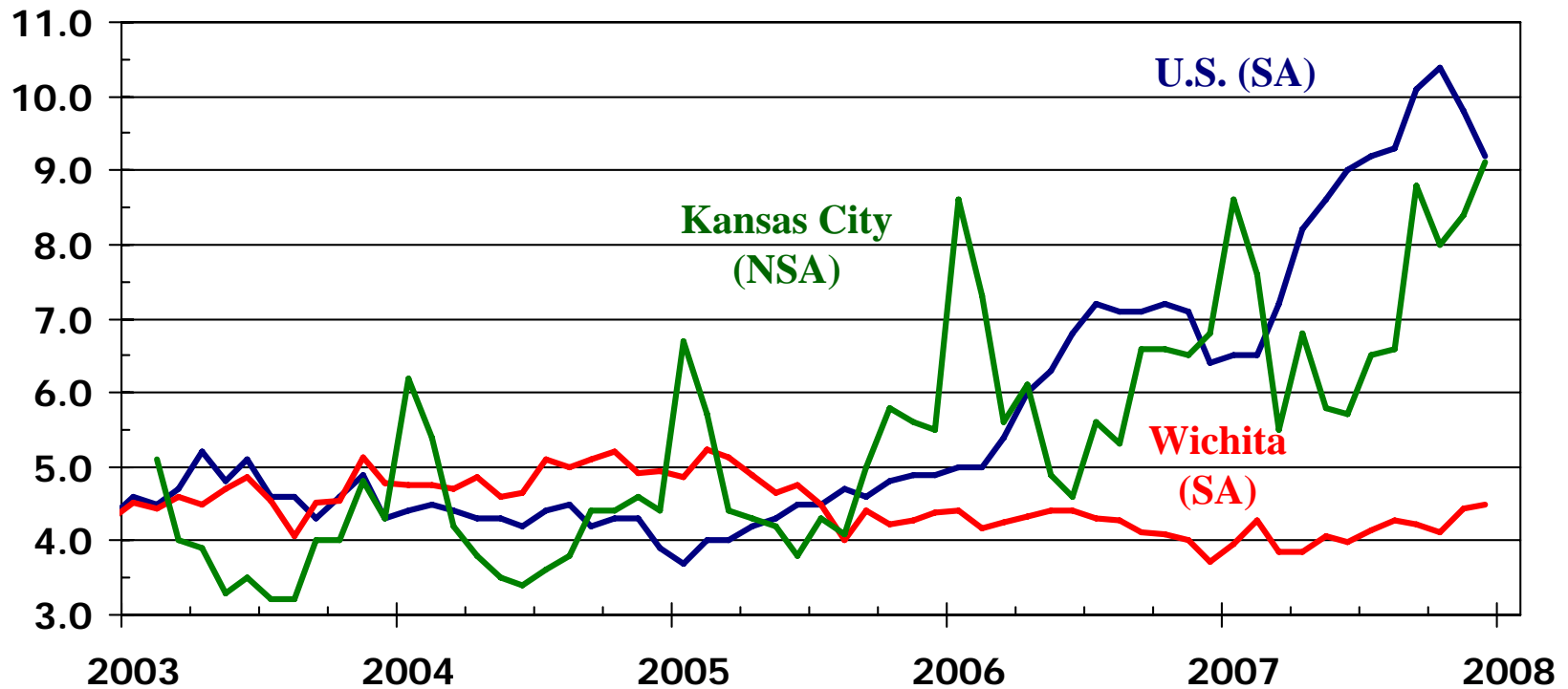
Number of Sales



Source: KCRAR

# Inventory of Existing Homes Available for Sale

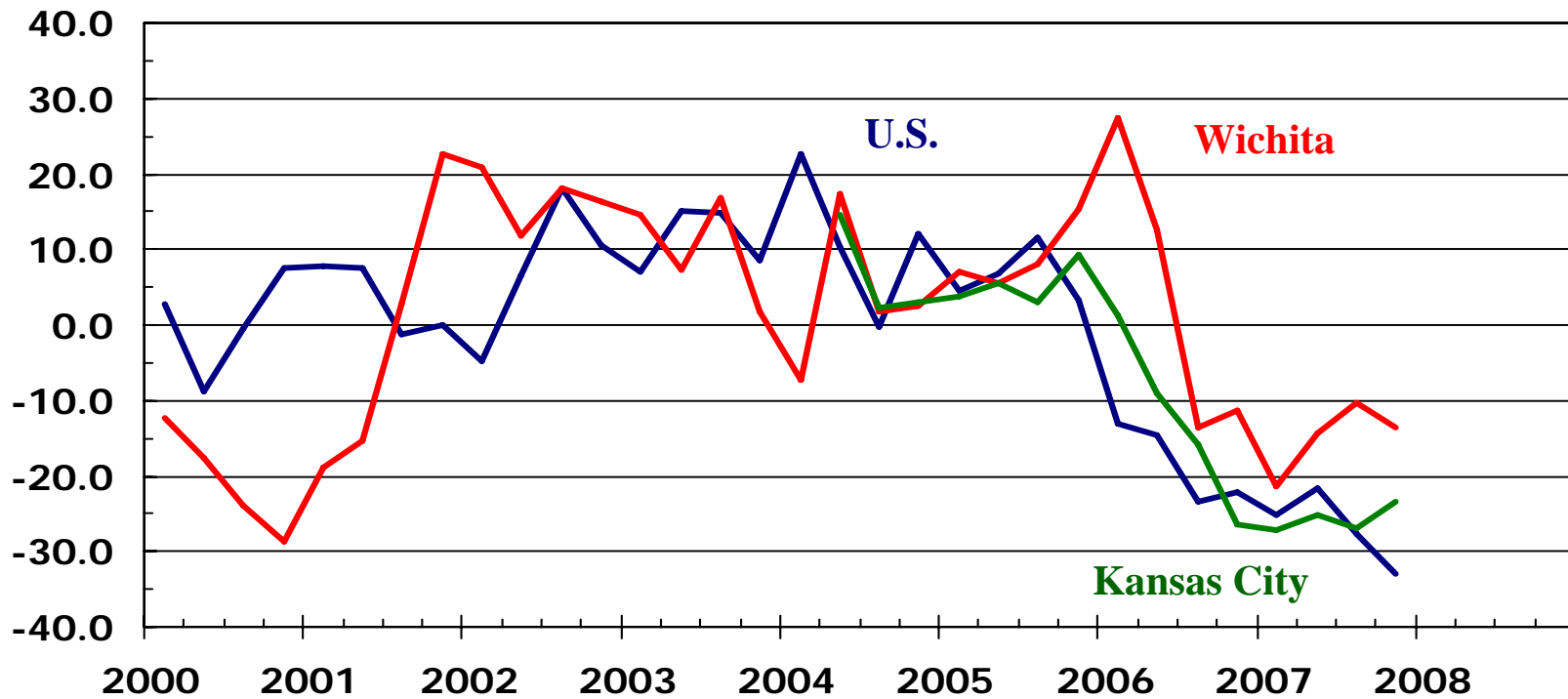
Months Supply



Sources: NAR; WSU Center for Real Estate  
using data from KCRAR and SCK MLS

# New Home Sales

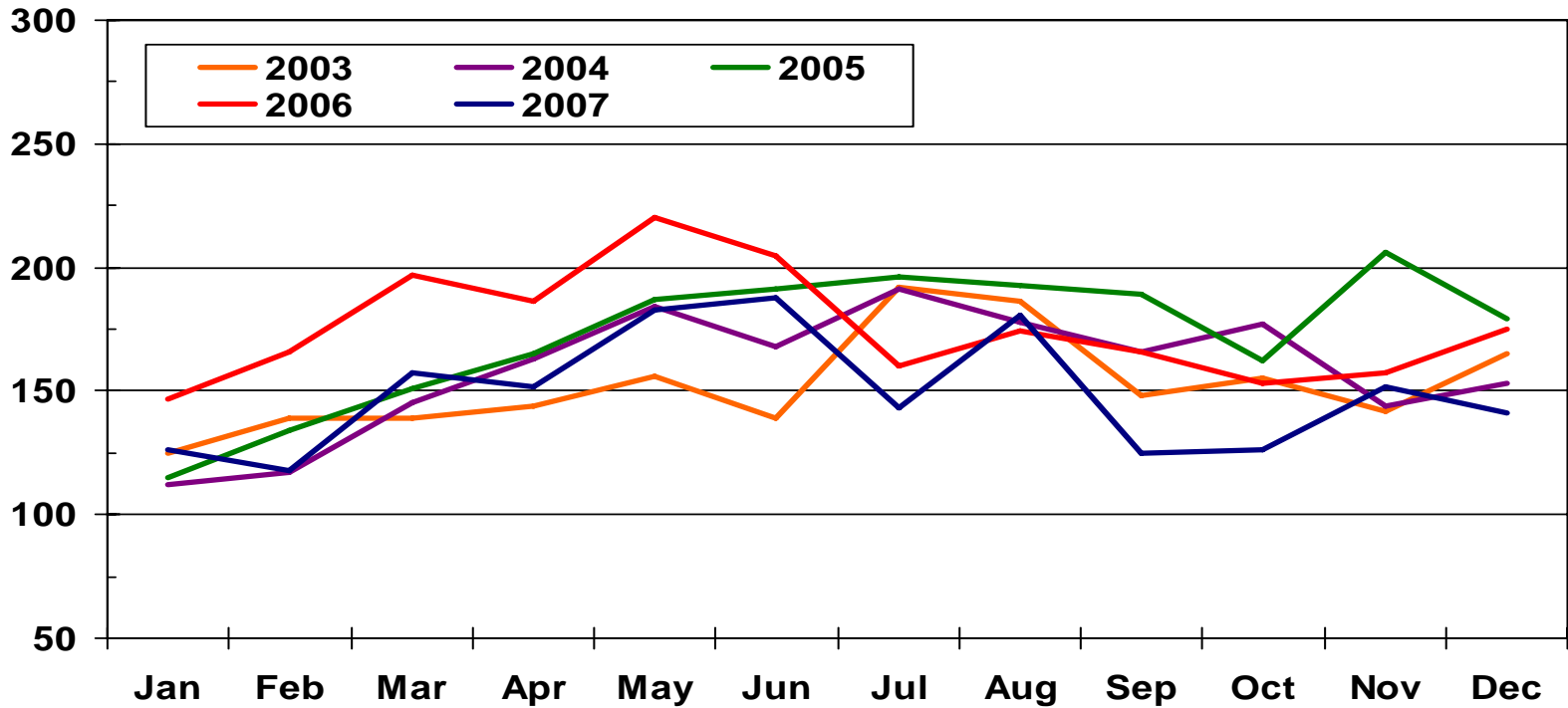
Year-over-year Percentage Change



Sources: HUD; SCK MLS; KCRAR

# Wichita Area New Home Sales

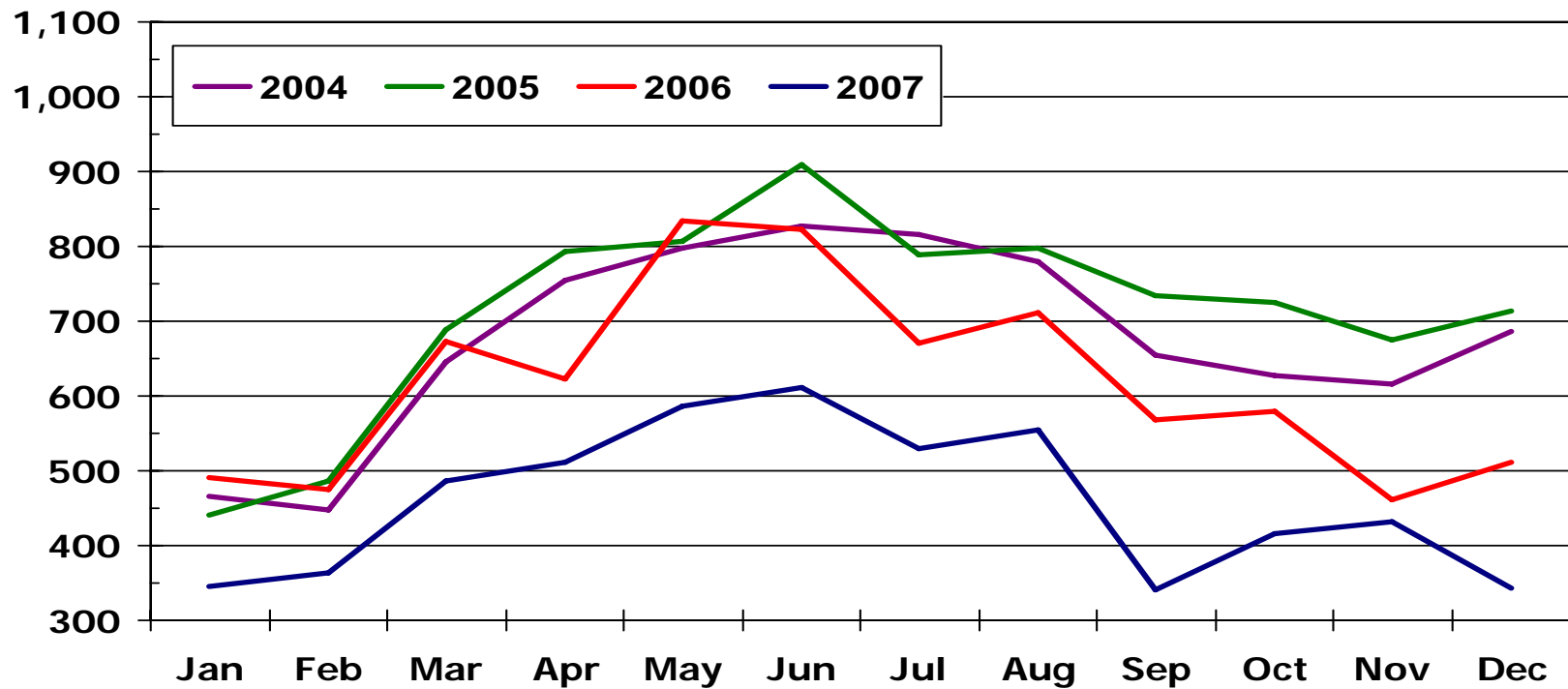
Number of Sales



Source: SCKMLS

# Kansas City Area New Home Sales

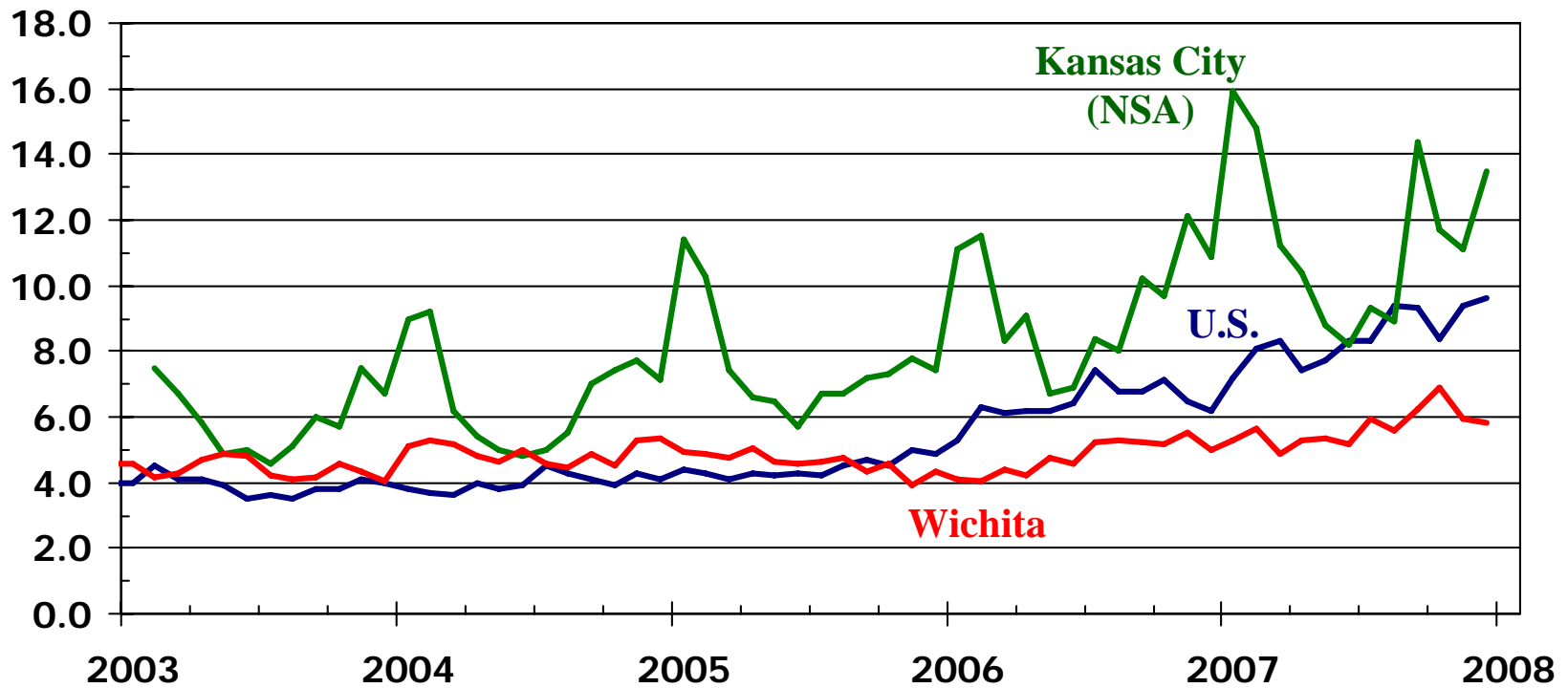
Number of Sales



Source: KCRAR

# Inventory of New Homes Available for Sale

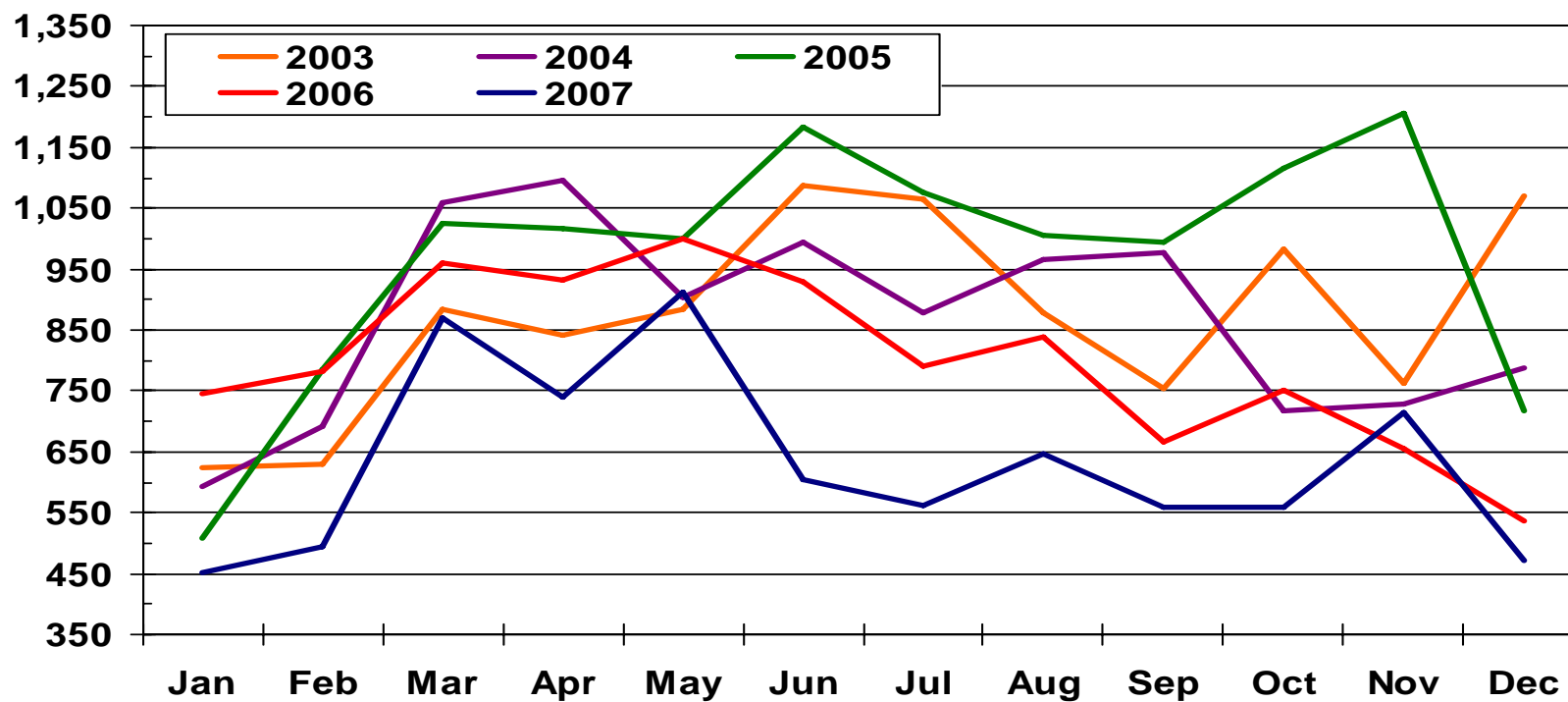
Months Supply (SA)



Sources: NAR; WSU Center for Real Estate  
using data from KCRAR and SCK MLS

# Kansas Building Permits

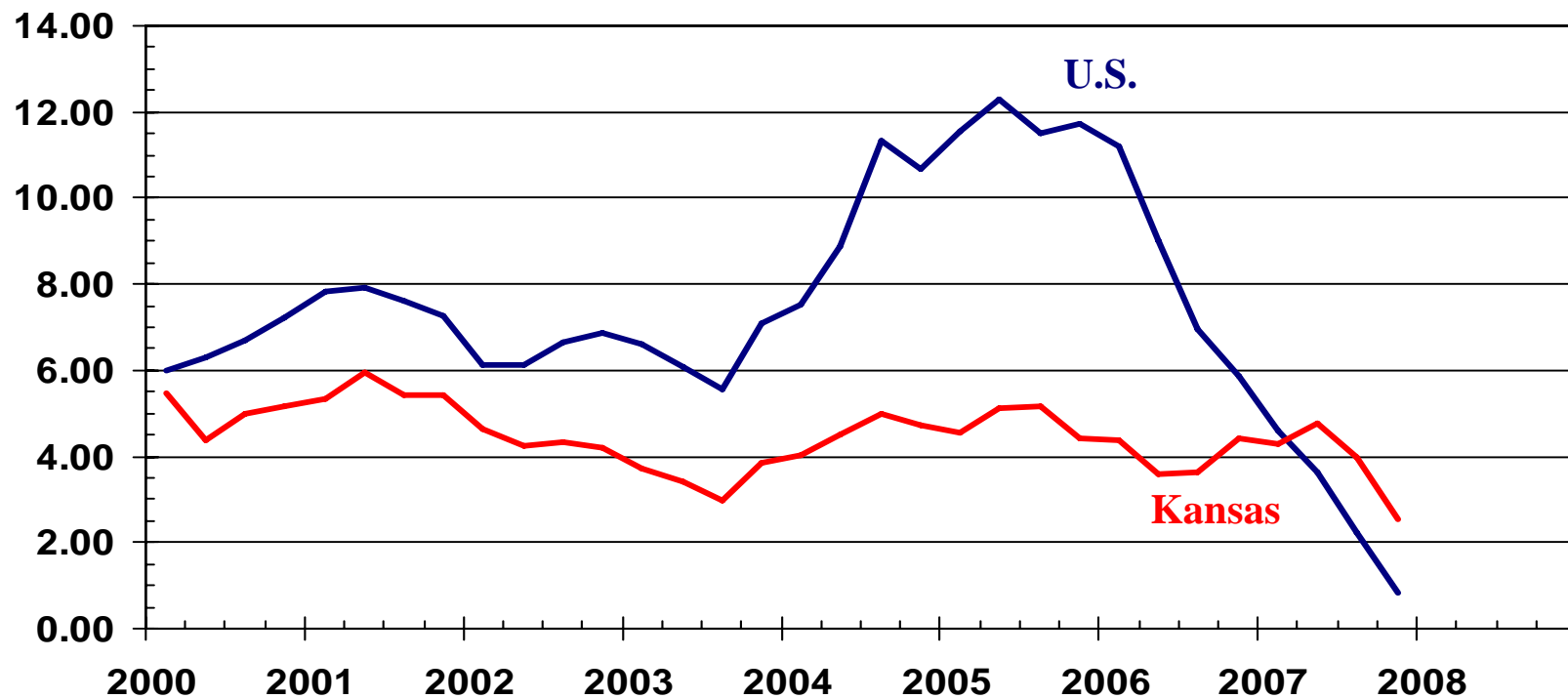
Number of Sales



Source: U.S. Census Bureau

# Home Price Appreciation

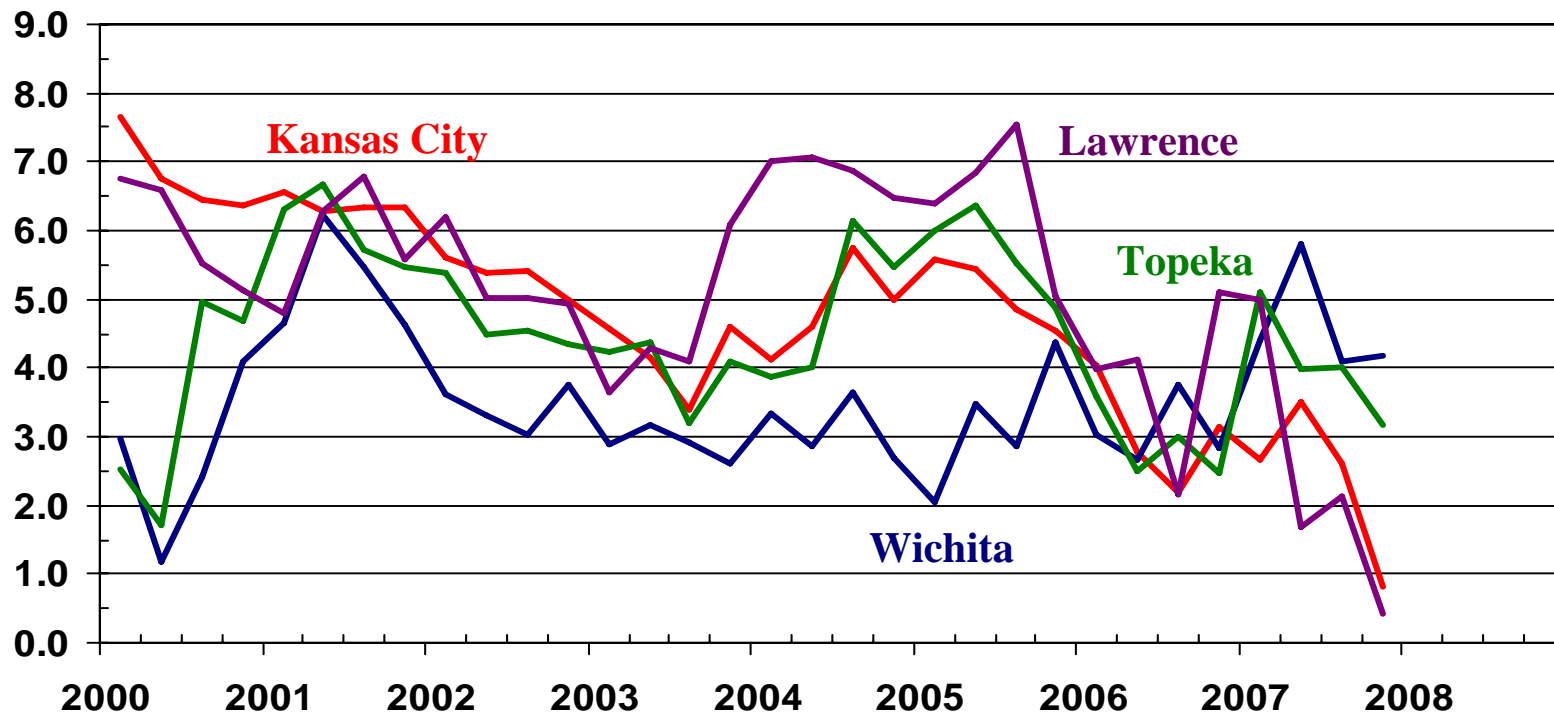
Year-over-year Percentage Change



Source: Office of Federal Housing Enterprise Oversight

# Home Price Appreciation

Year-over-year Percentage Change

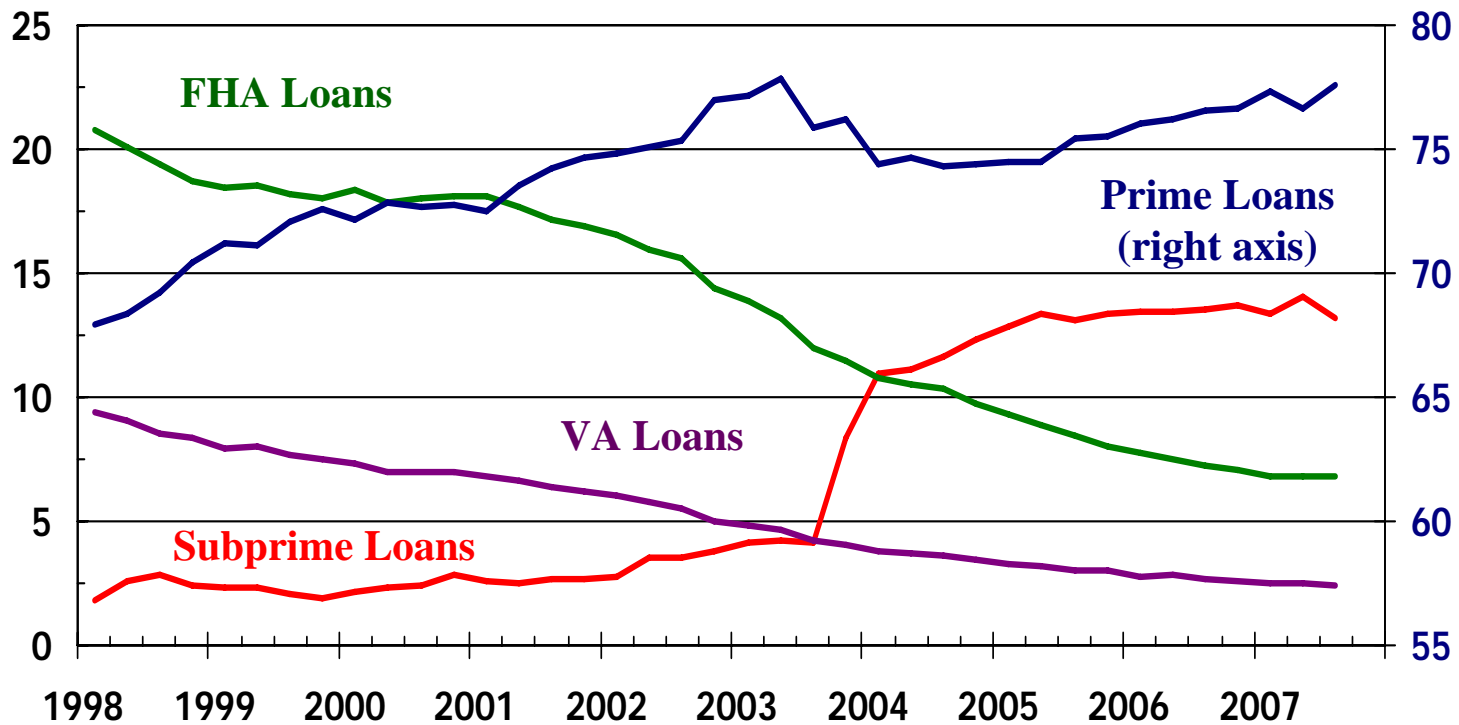


Source: Office of Federal Housing Enterprise Oversight

# The Growth of Subprime Lending

Percent of Loans Serviced

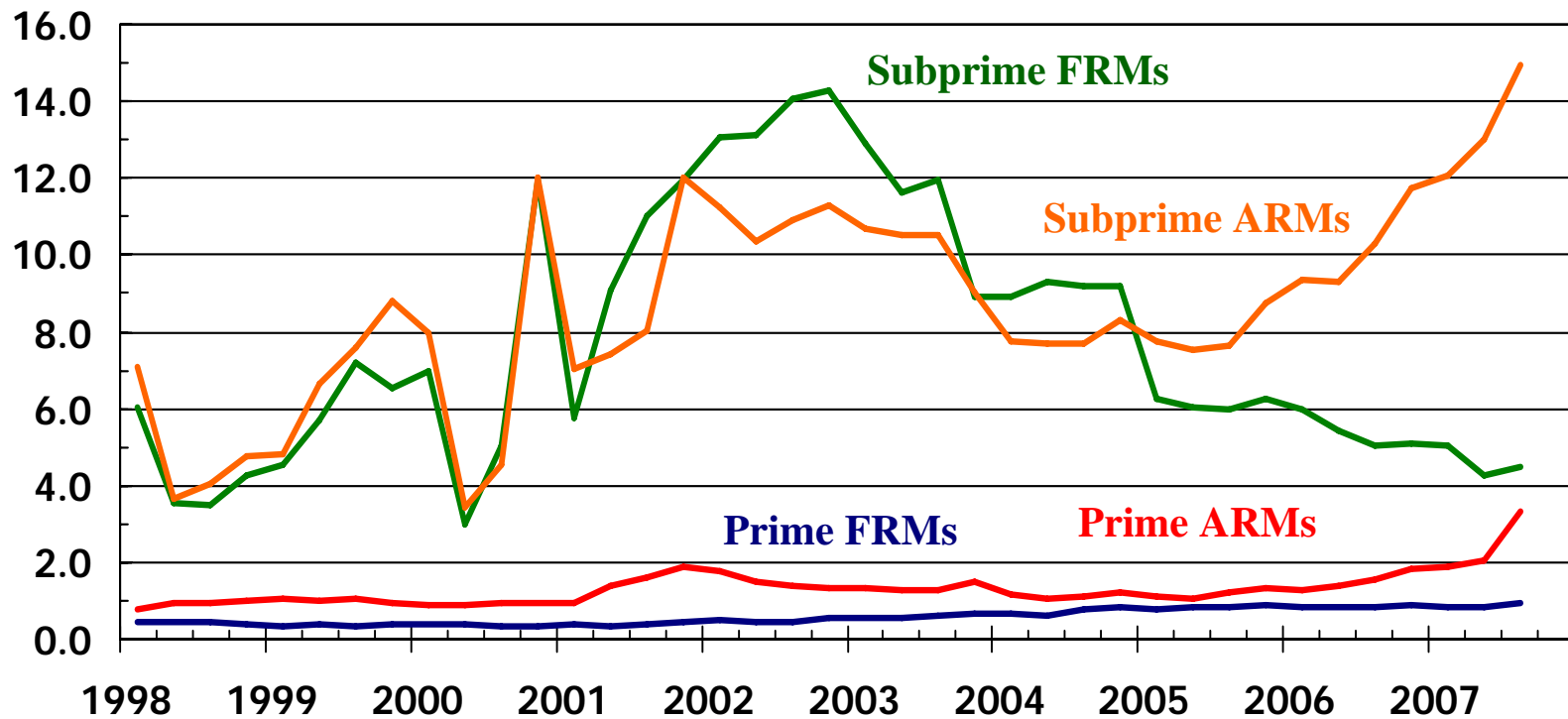
Percent of Loans Serviced



Source: MBAA

# KS Severely Delinquent Loans

Percent of Loans Serviced

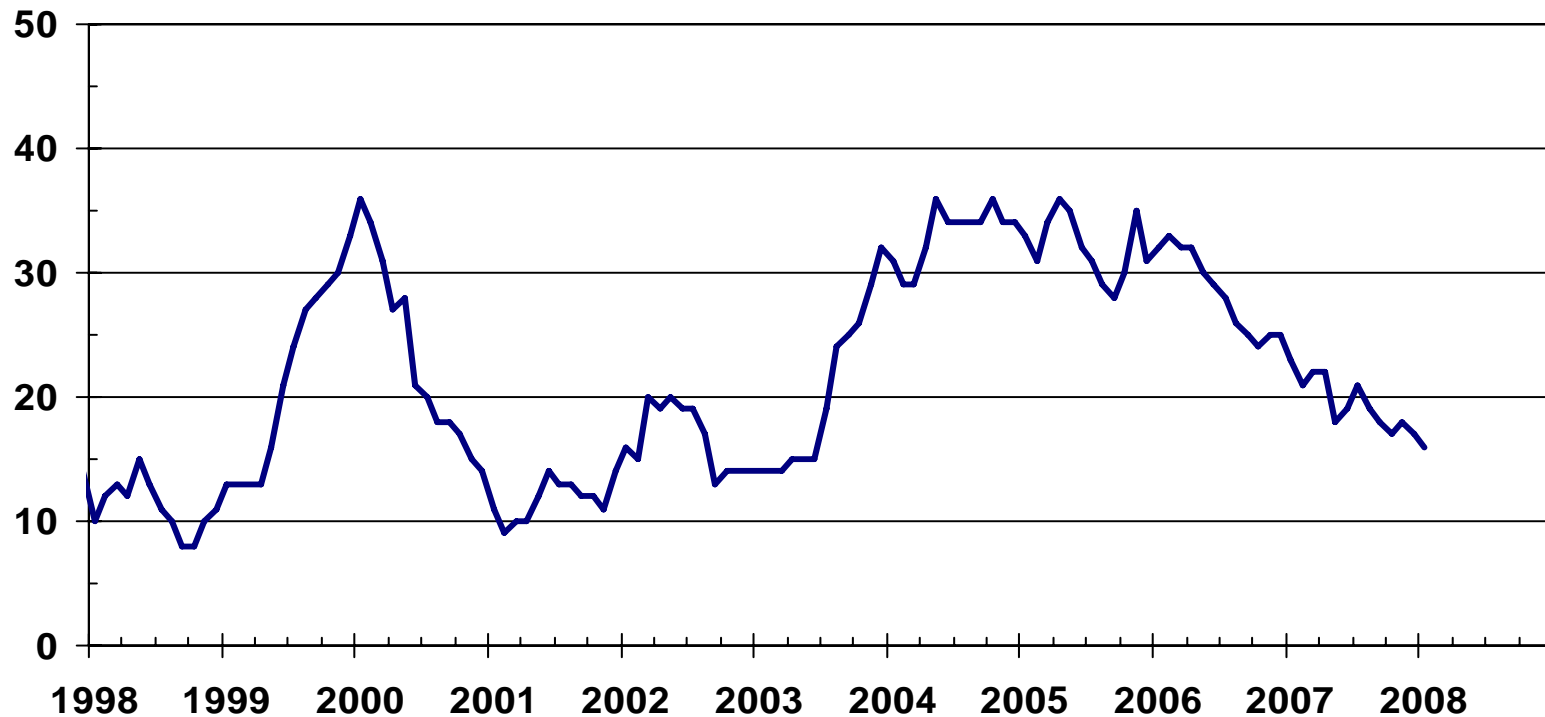


**ARMs make up over 40% of subprime loans in KS but about 10% of all prime loans**

Source: MBAA

# ARM Share of New Mortgage Originations

Percent



Source: Freddie Mac

# Wichita State University Center for Real Estate

*Laying a Foundation for  
Real Estate in Kansas*



WICHITA STATE UNIVERSITY

