

Kansas Economic and Housing Markets Outlook

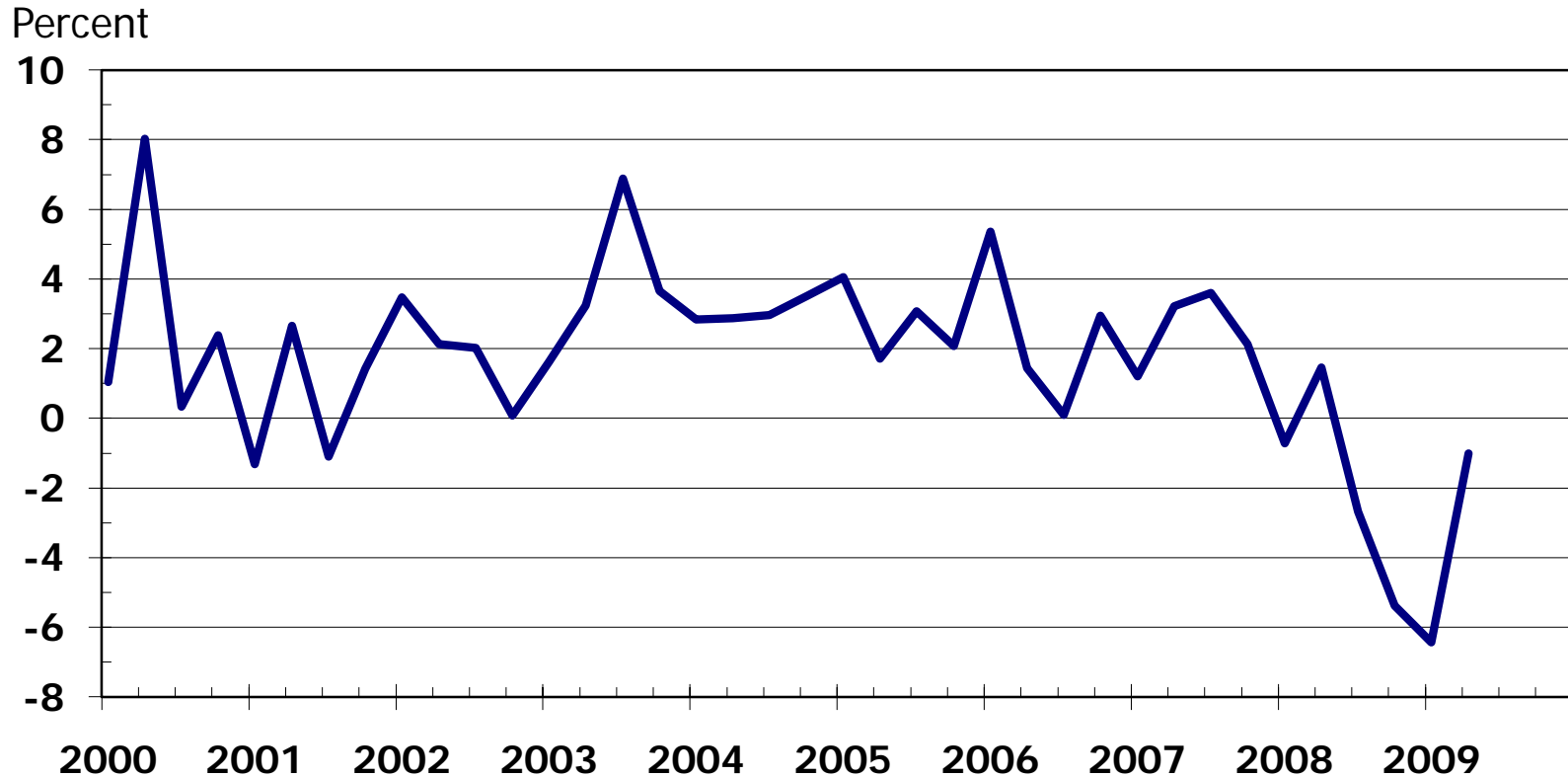
*CRB Meeting
Dr. Stanley D. Longhofer
September 21, 2009*



WICHITA STATE
UNIVERSITY

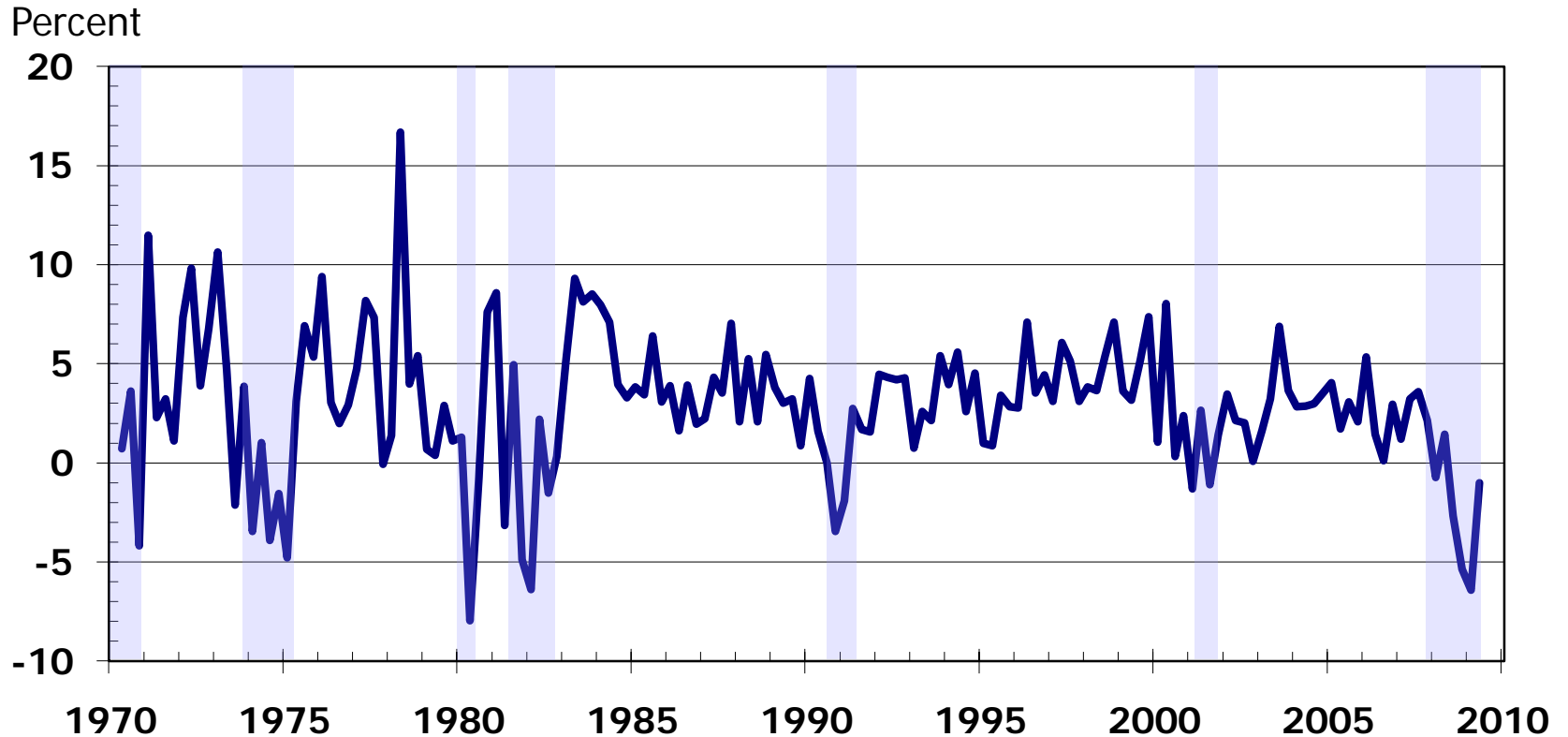


Real GDP Growth



Source: Bureau of Economic Analysis

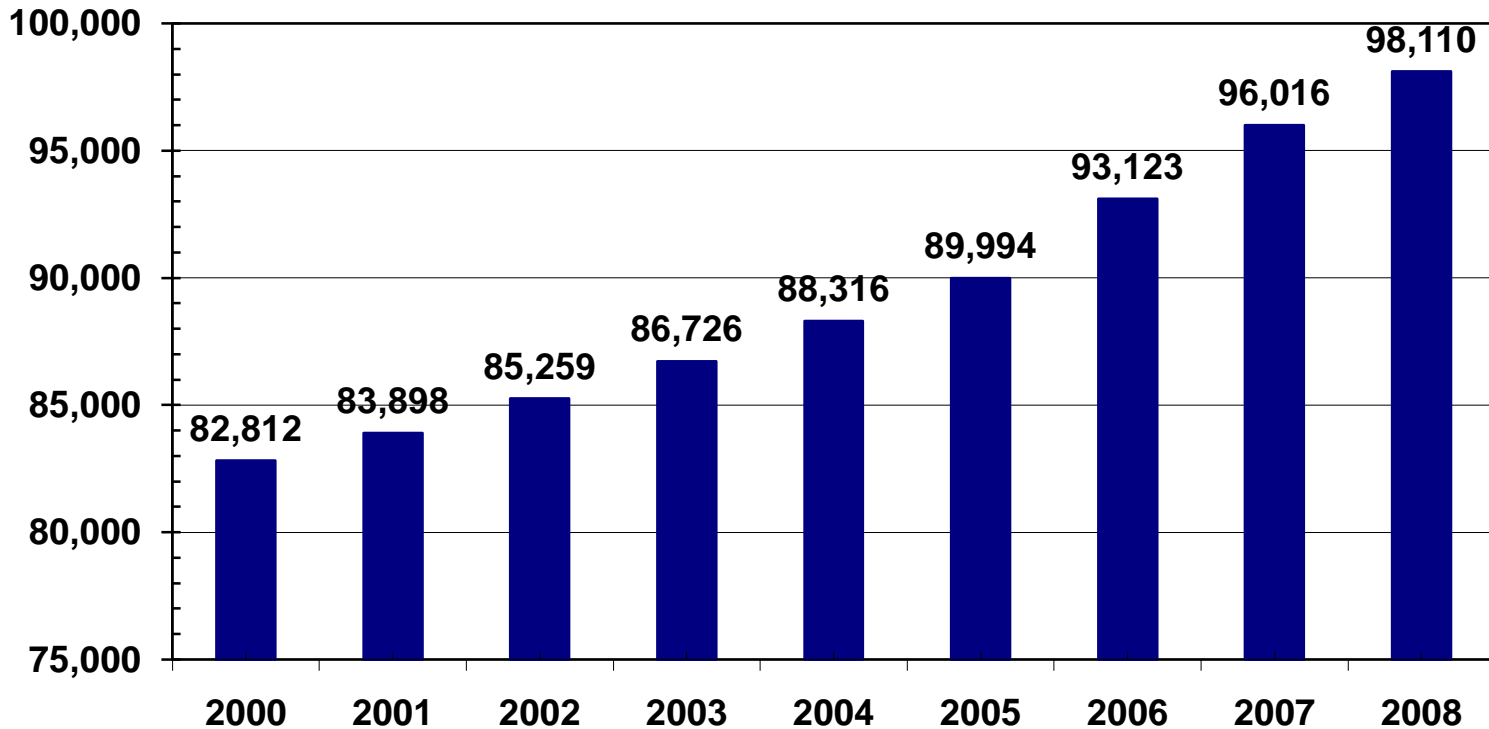
Real GDP Growth



Source: Bureau of Economic Analysis

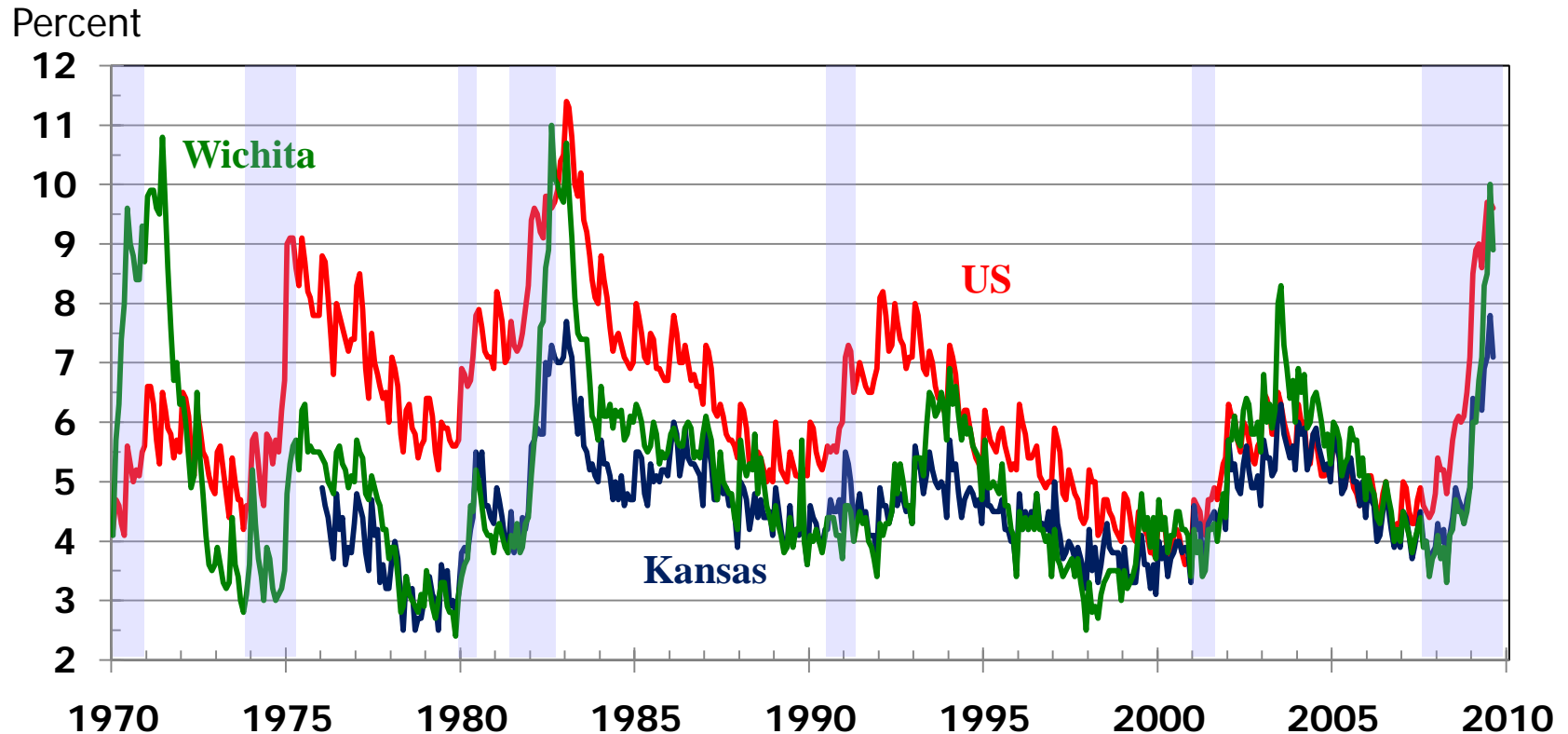
Kansas Real GDP

Billions of 2000 Dollars



Source: Bureau of Economic Analysis

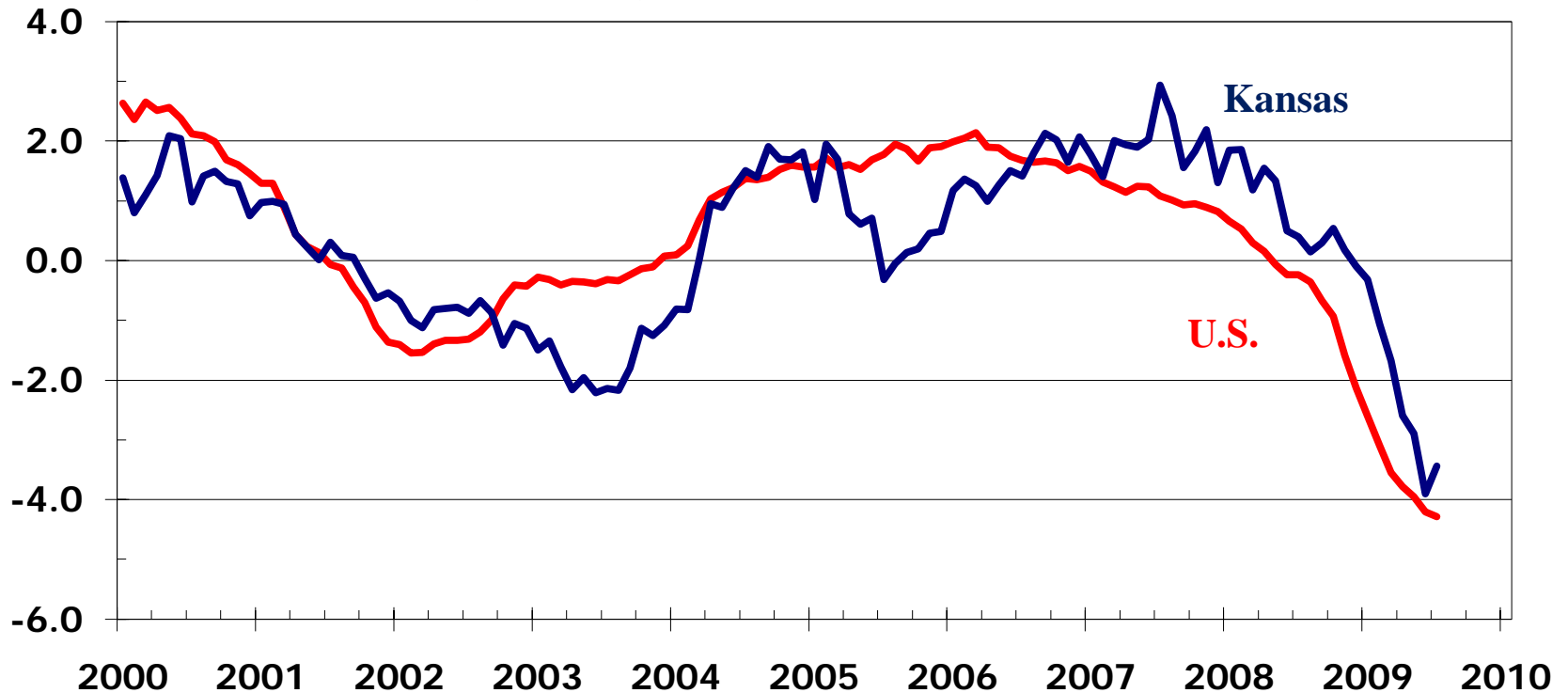
Unemployment Rate



Sources: Kansas Department of Human Resources;
U.S. Bureau of Labor Statistics

Employment Growth

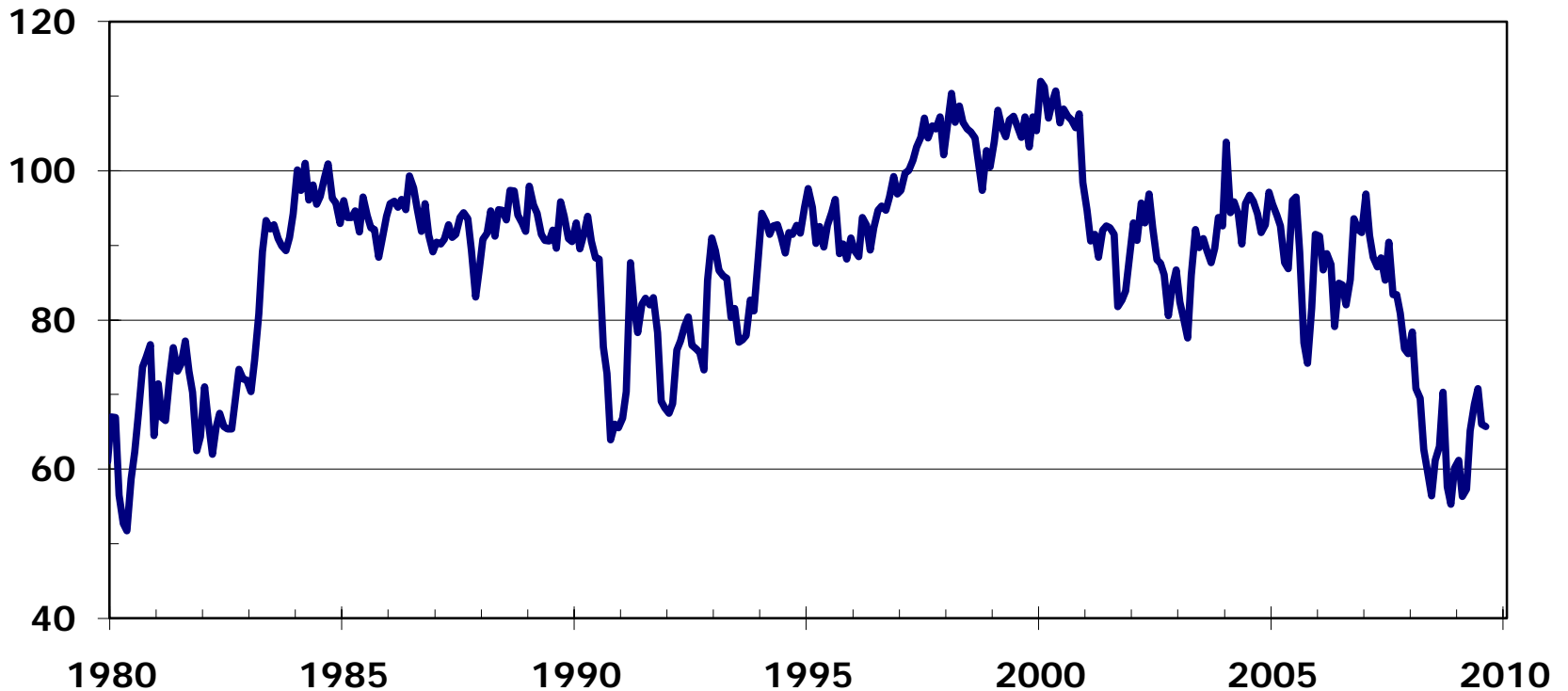
Year-over-Year Percentage Change



Sources: Kansas Department of Human Resources;
U.S. Bureau of Labor Statistics

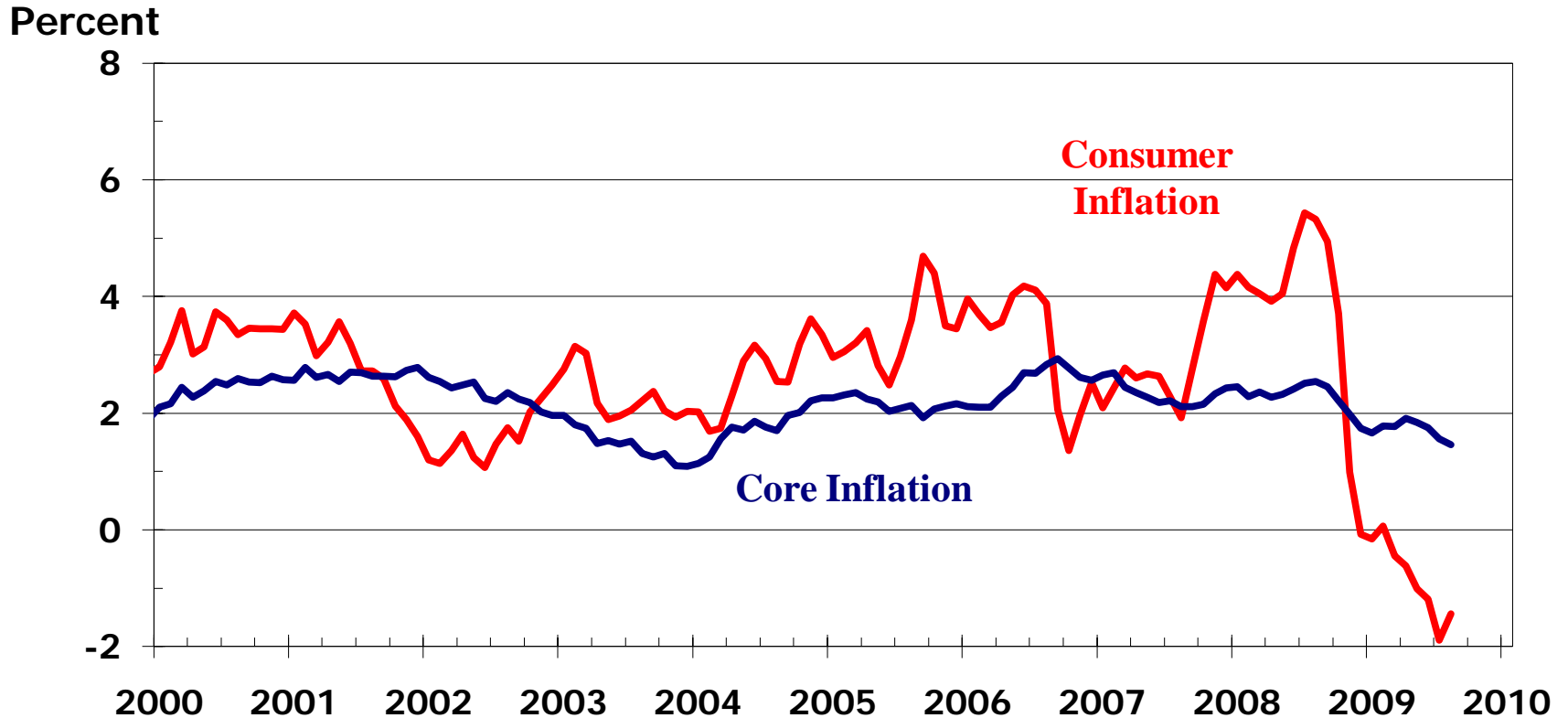
Consumer Sentiment

Index: 1966 = 100



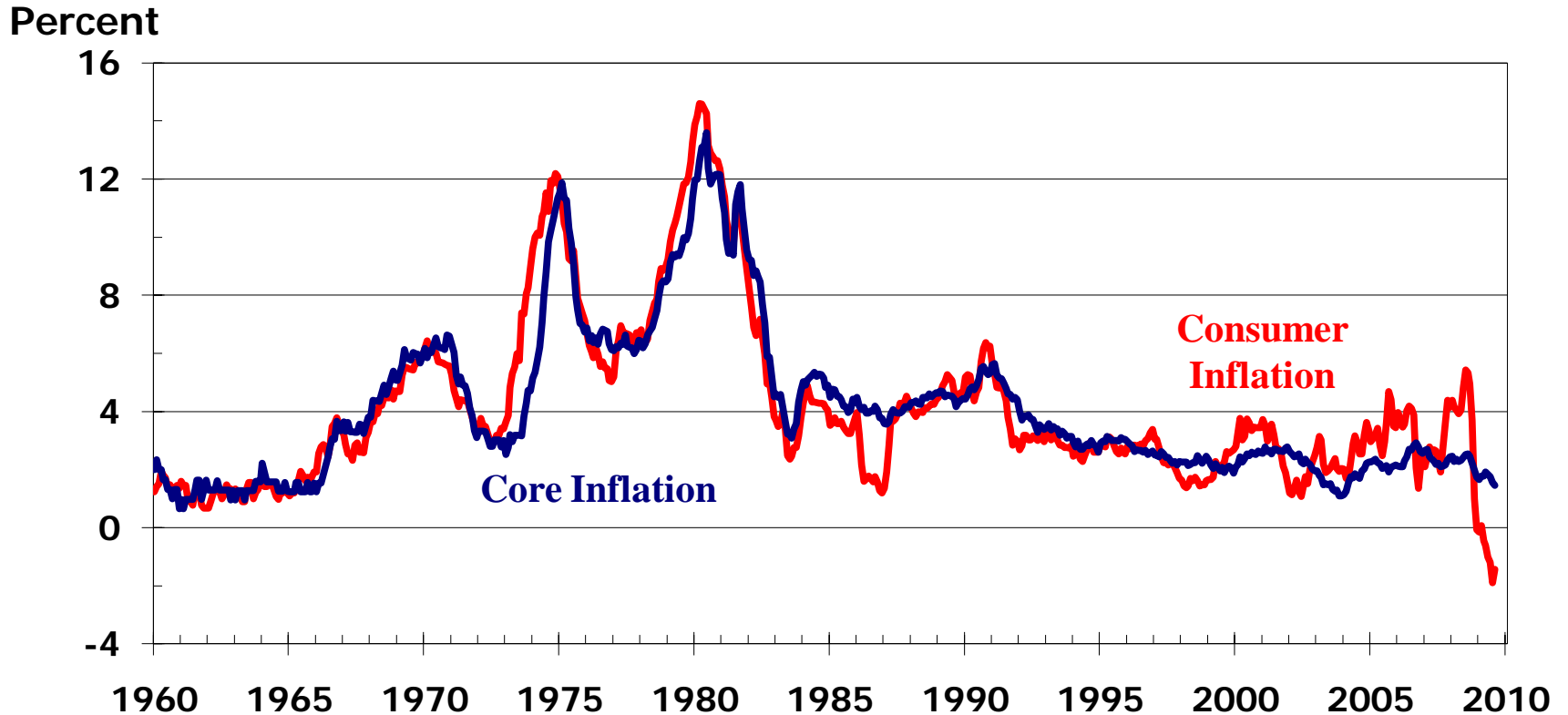
Source: University of Michigan

Consumer Inflation



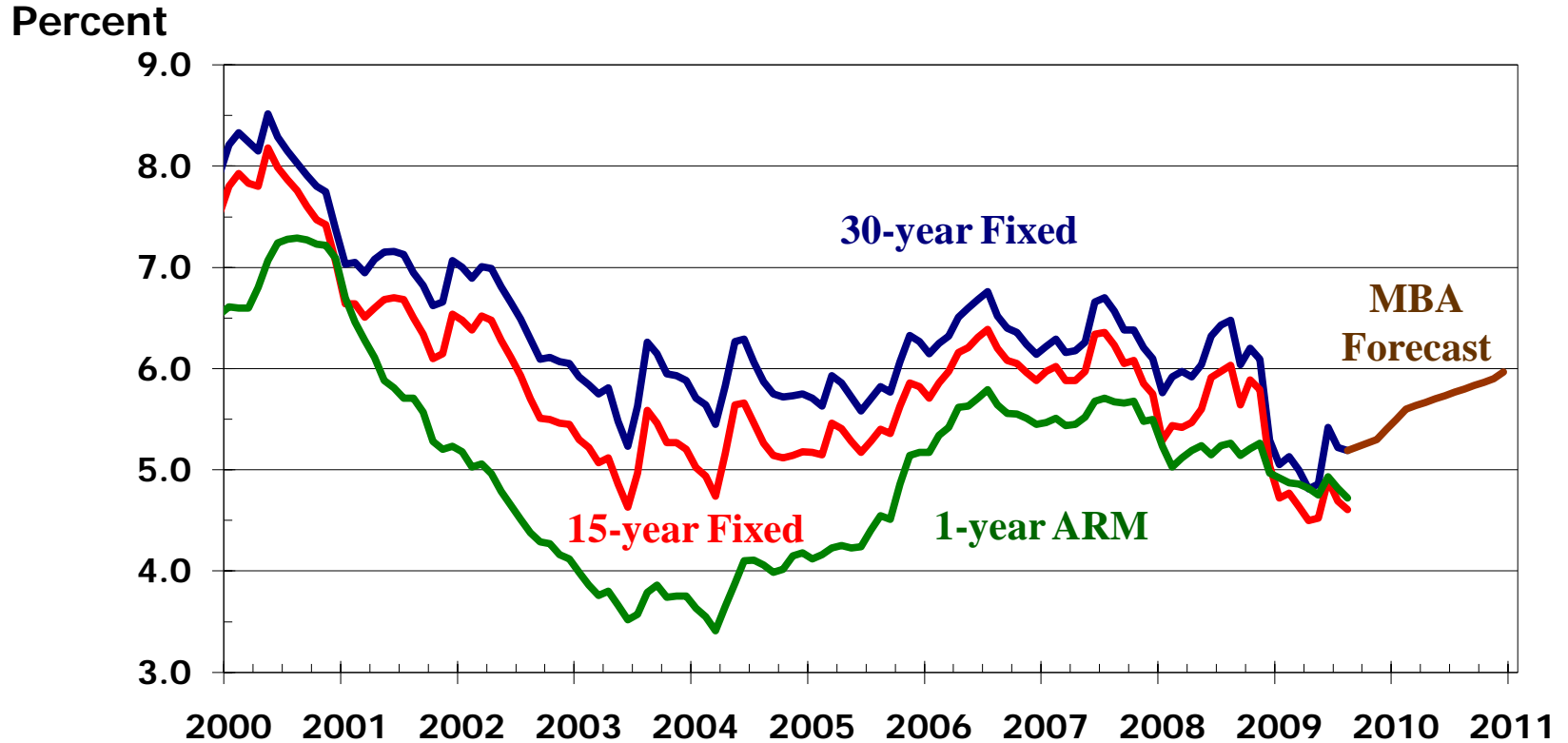
Sources: U.S. Bureau of Labor Statistics;
University of Michigan

Consumer Inflation



Sources: U.S. Bureau of Labor Statistics;
University of Michigan

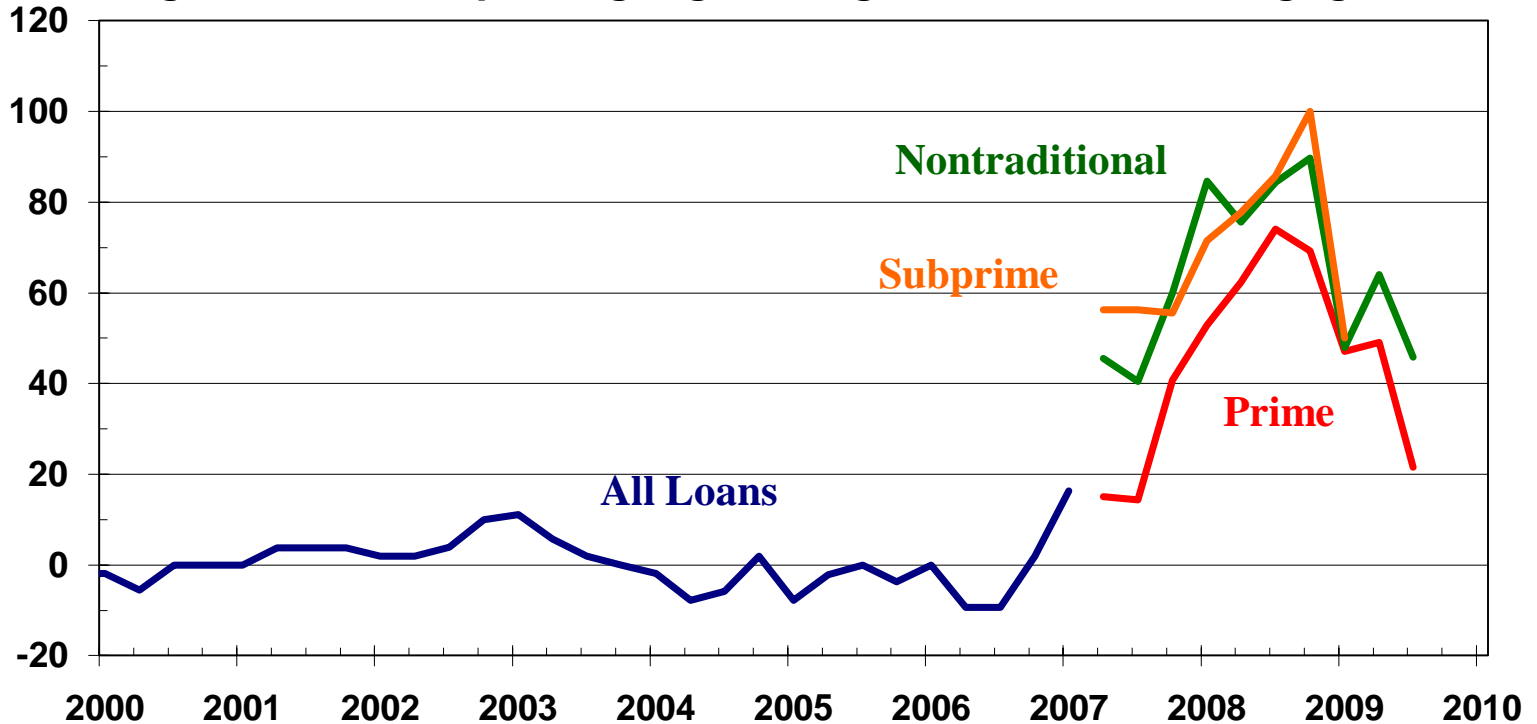
Mortgage Rates



Sources: Freddie Mac; MBA

Mortgage Credit Conditions

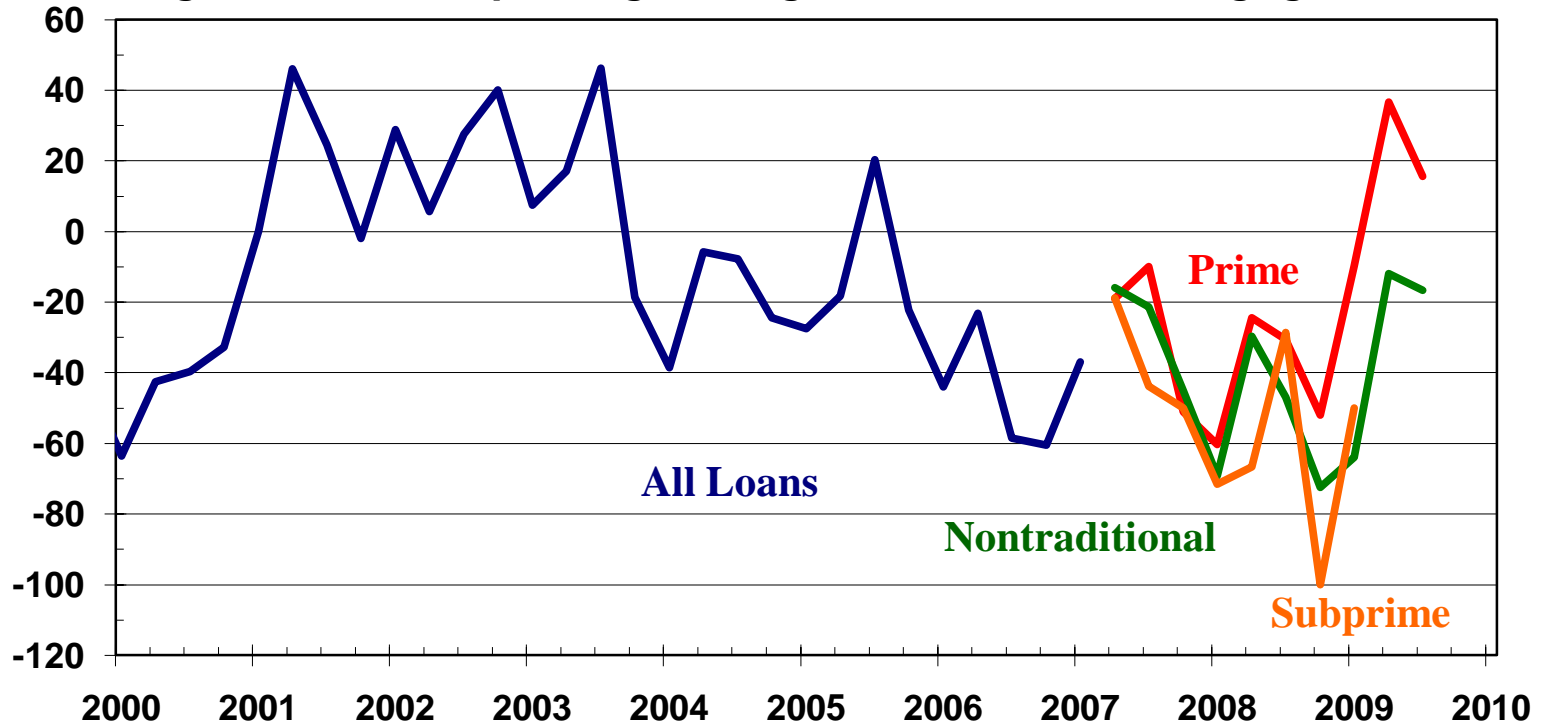
Net Percentage of Banks Reporting Tightening Standard for Mortgages



Source: Board of Governors of the Federal Reserve System

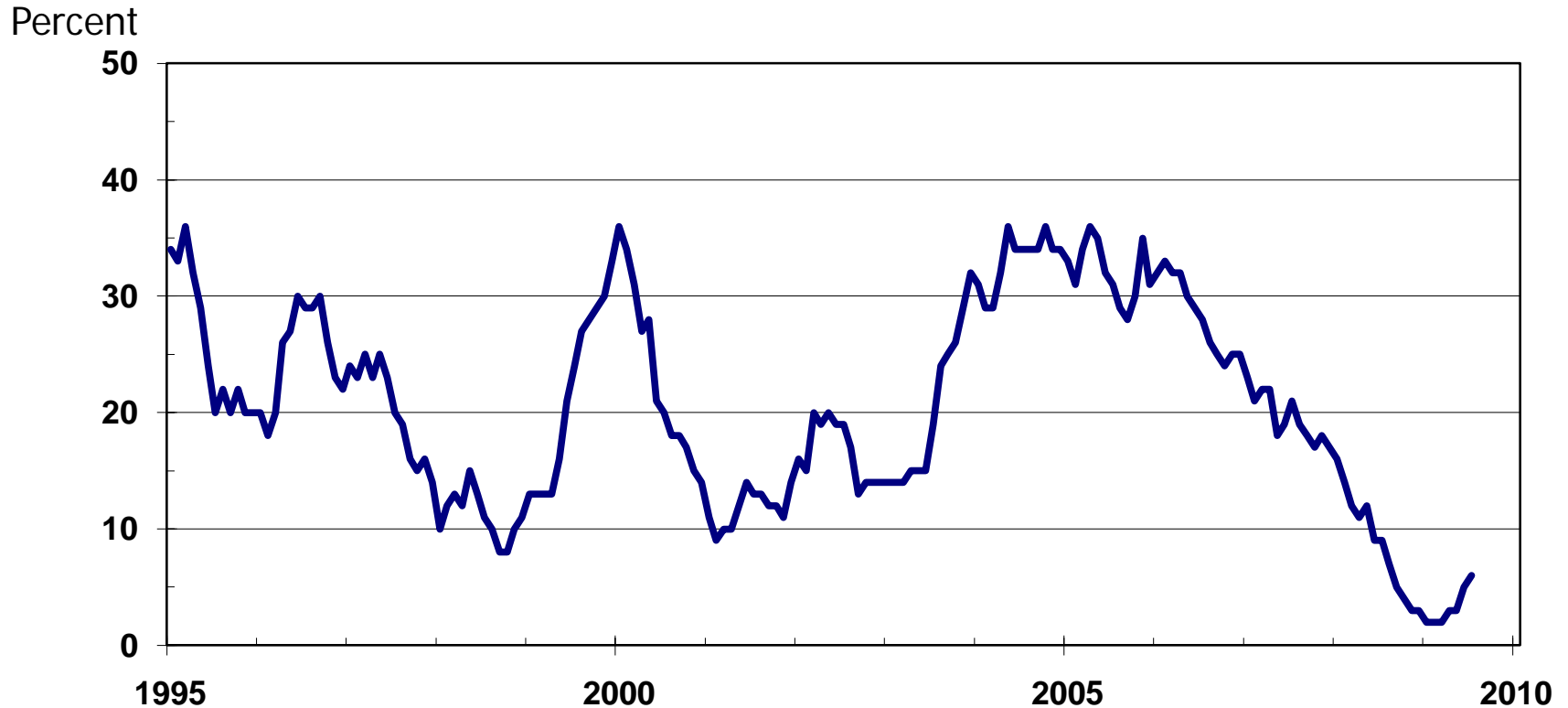
Mortgage Demand

Net Percentage of Banks Reporting Stronger Demand for Mortgages



Source: Board of Governors of the Federal Reserve System

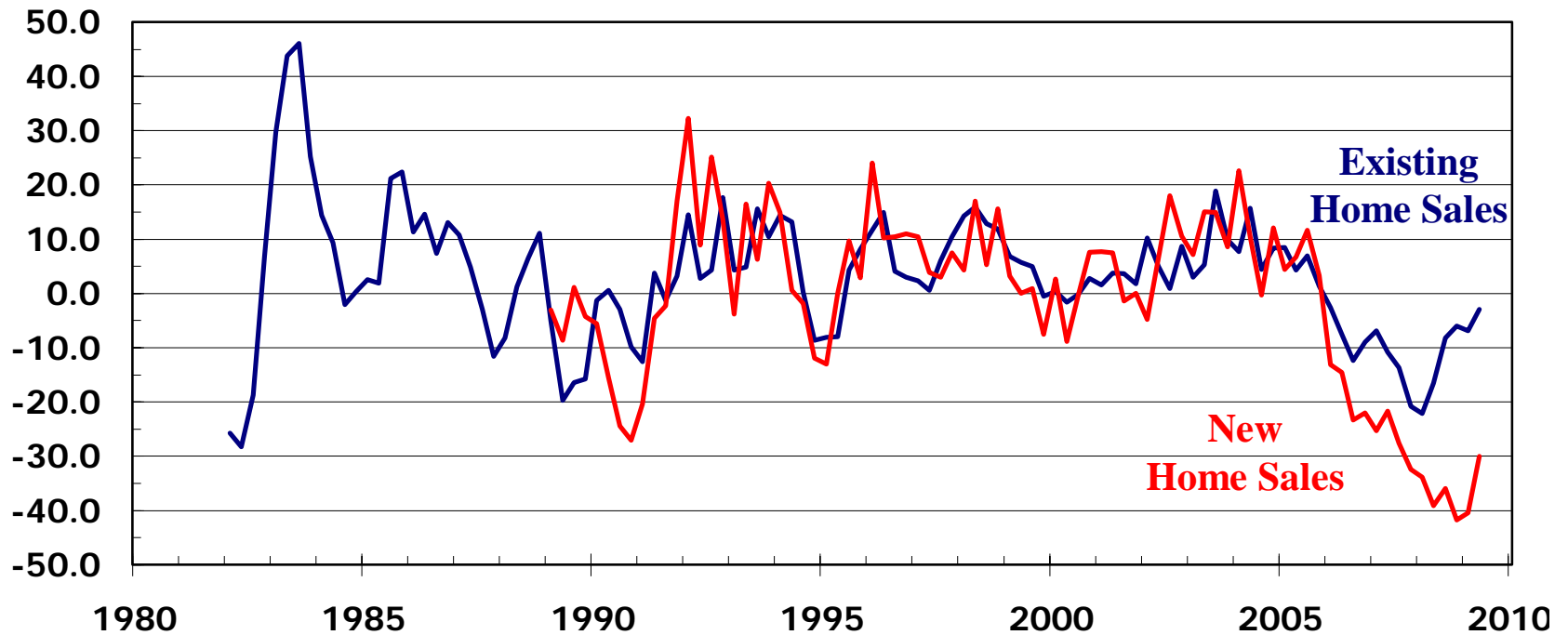
ARM Share of New Mortgage Originations



Source: Freddie Mac

US Home Sales

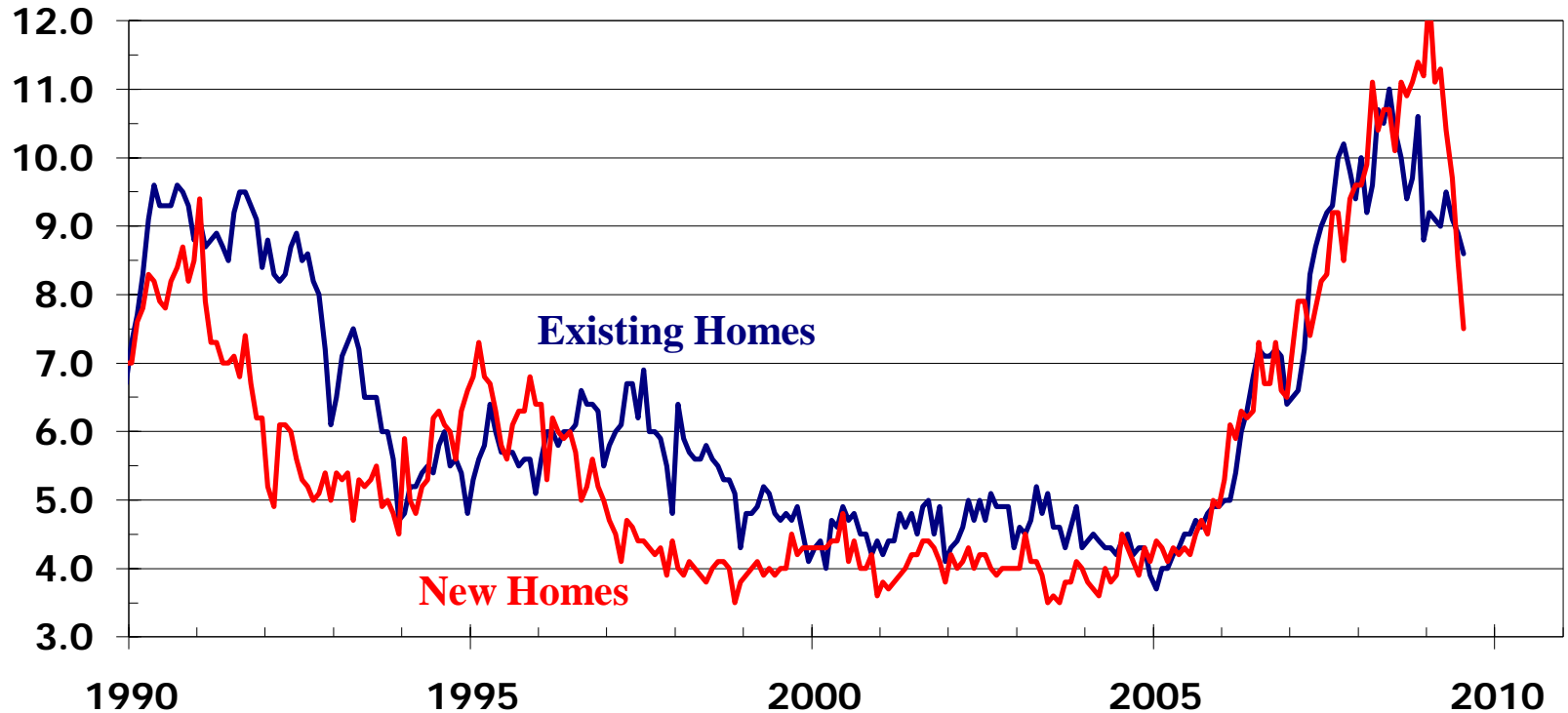
Year-over-year Percentage Change



Sources: NAR; U.S. Census Bureau

US Housing Inventories

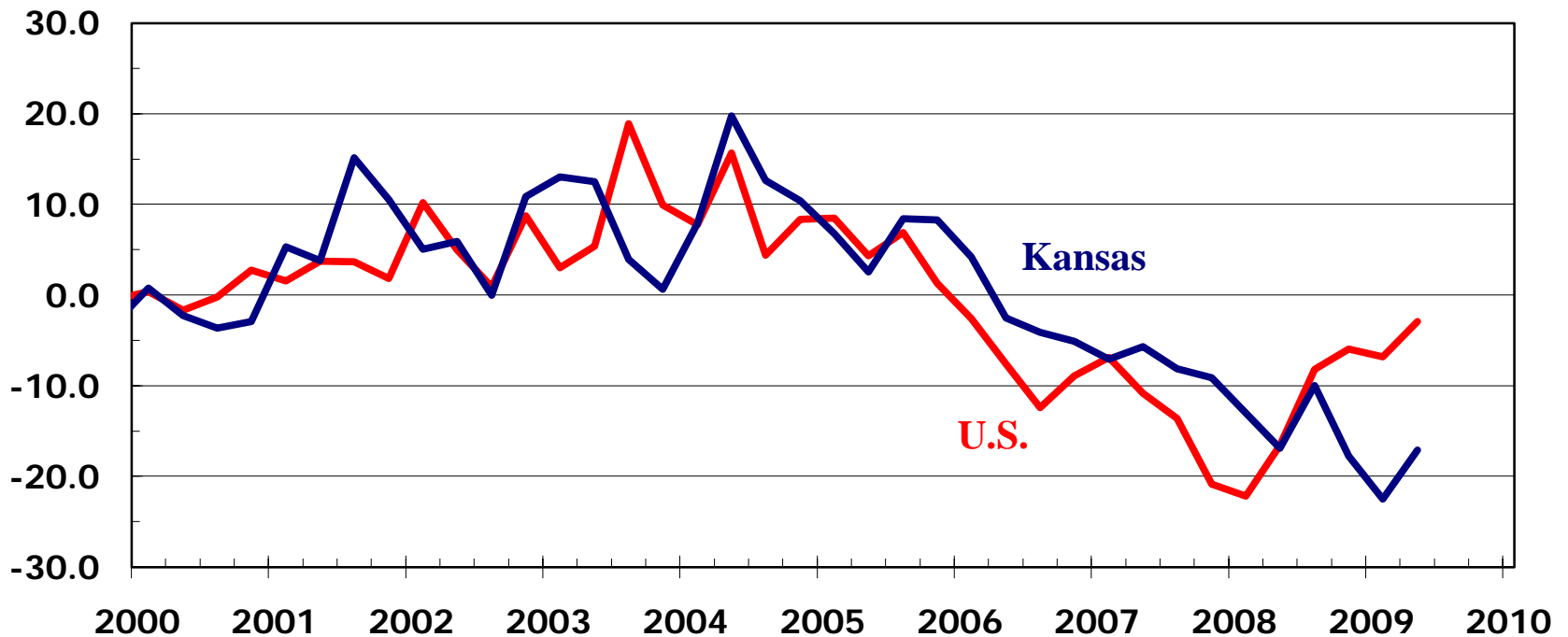
Months Supply (SA)



Sources: NAR; U.S. Census Bureau

Existing Home Sales

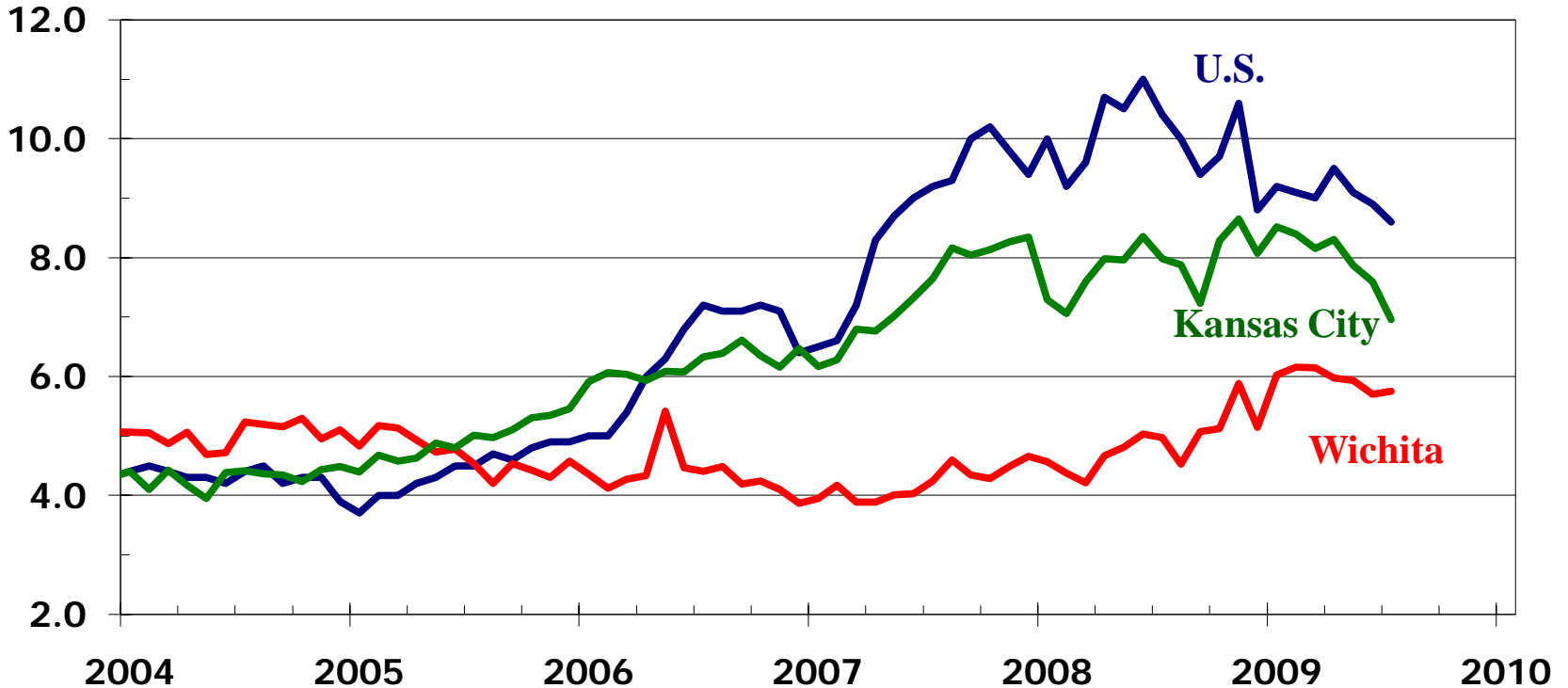
Year-over-year Percentage Change



Source: NAR

Inventory of Existing Homes Available for Sale

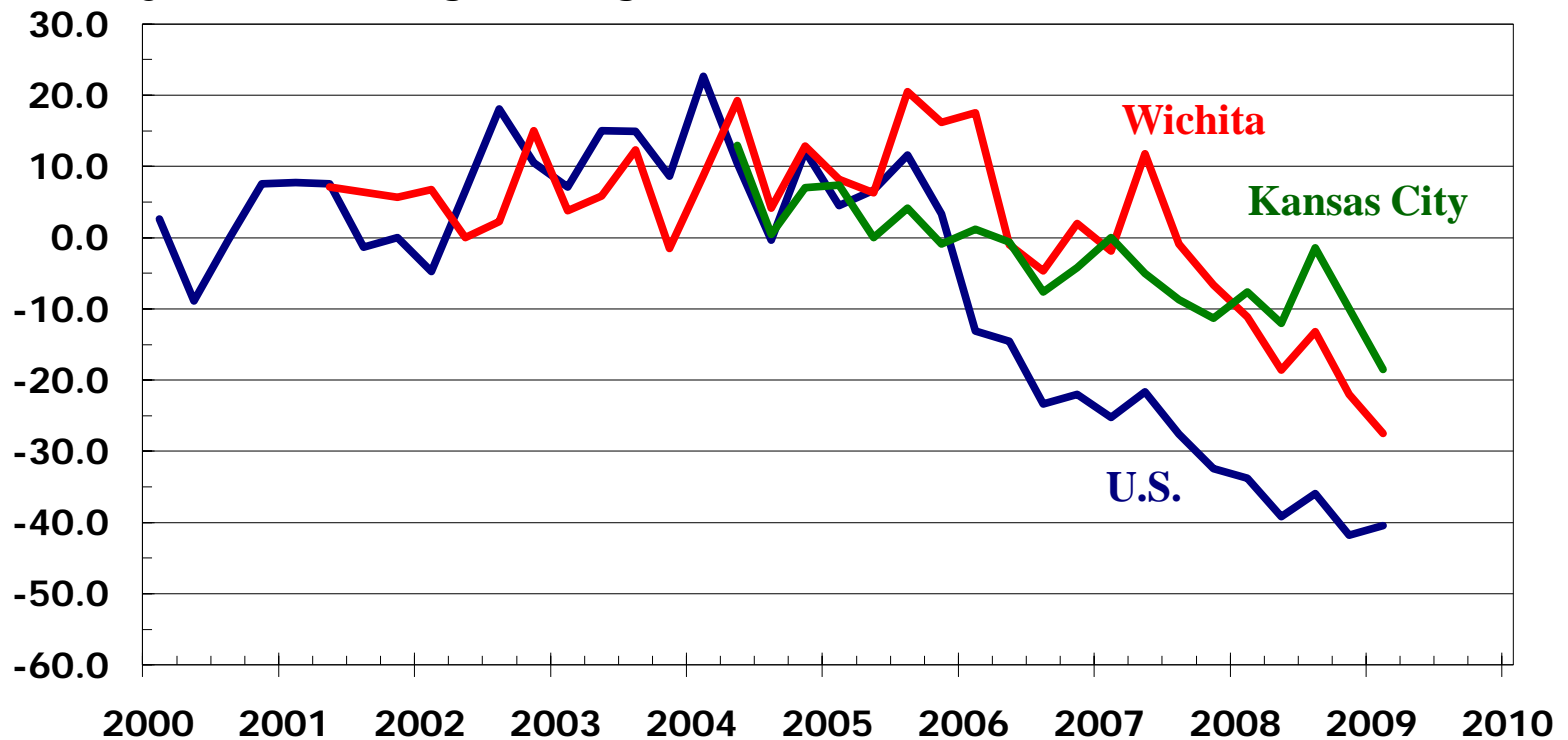
Months Supply (SA)



Sources: NAR; WSU Center for Real Estate
using data from KCRAR and SCK MLS

New Home Sales

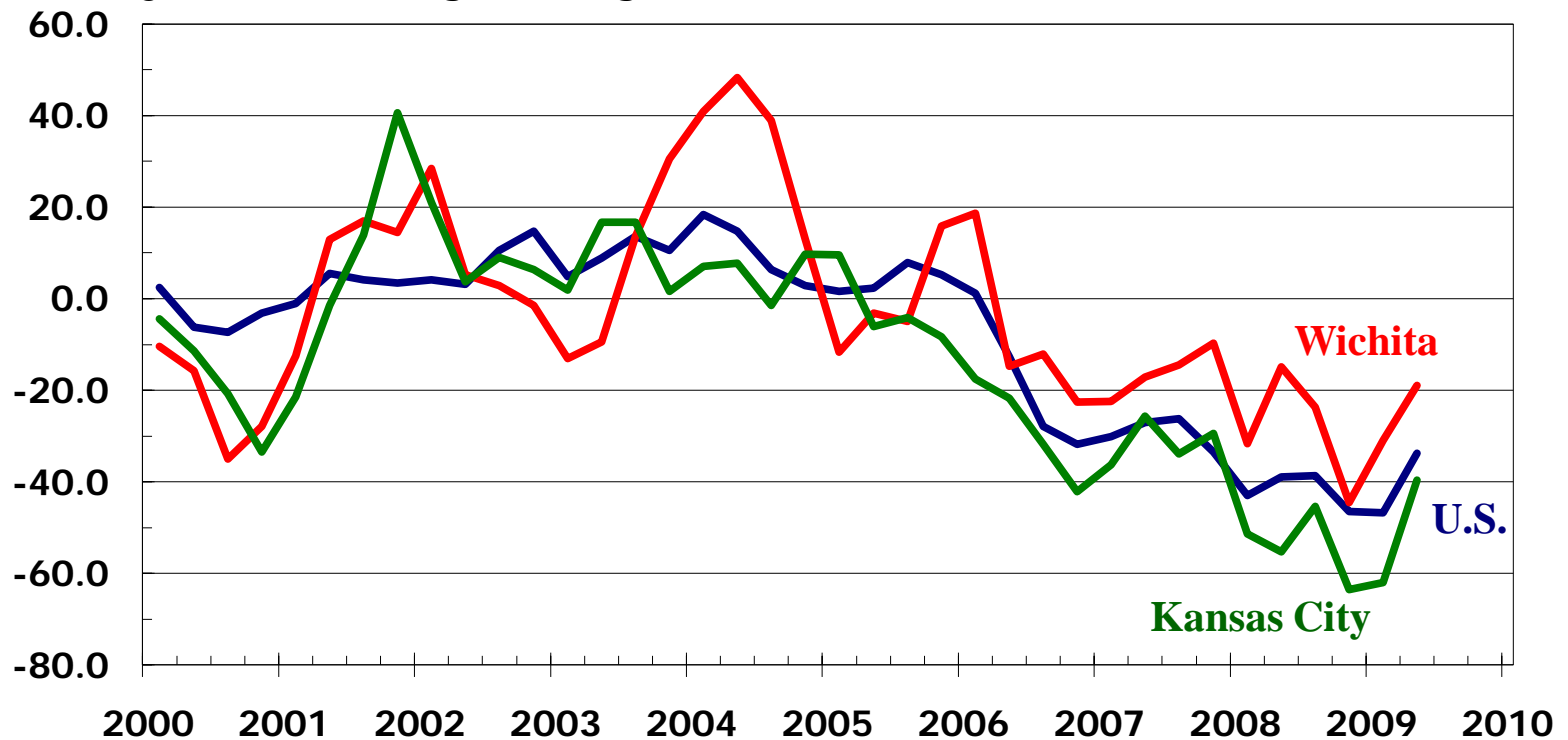
Year-over-year Percentage Change



Sources: HUD; SCK MLS; KCRAR

New Home Construction

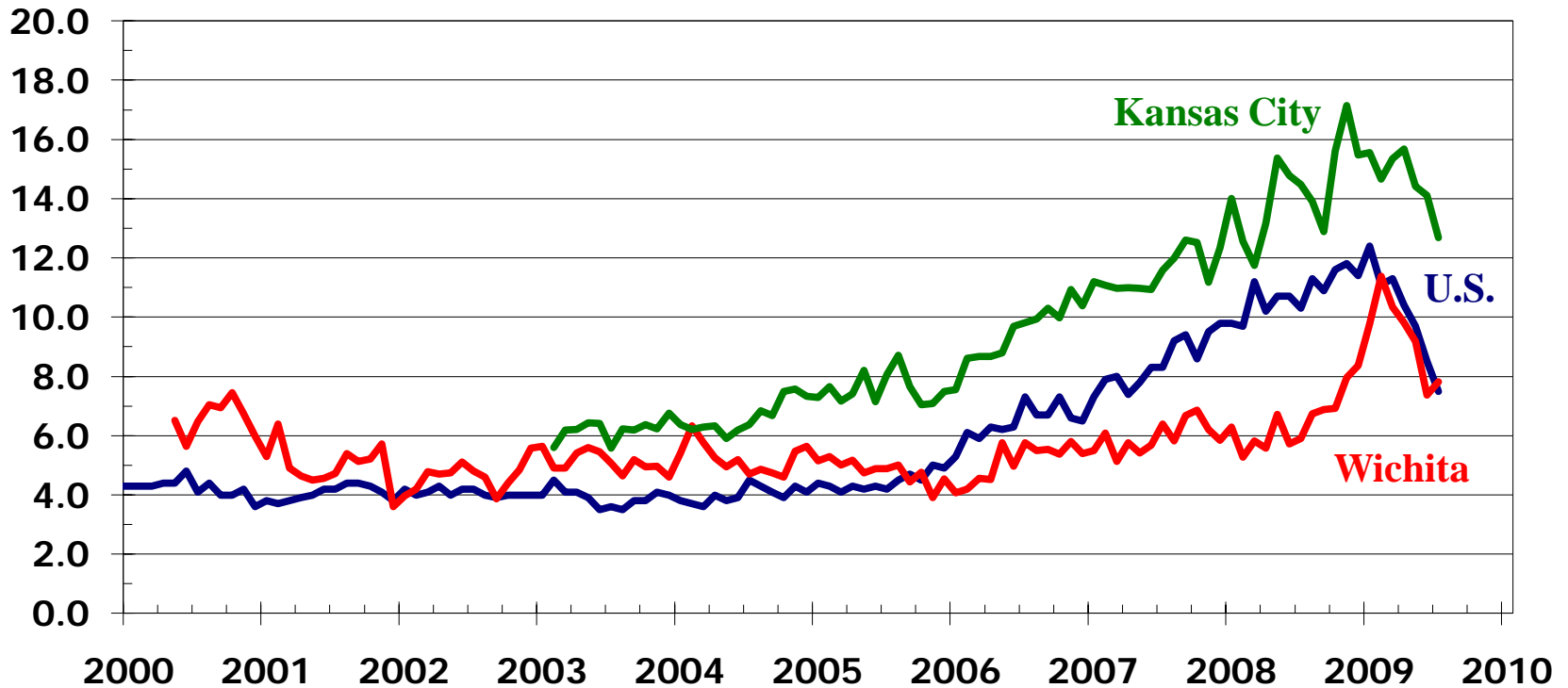
Year-over-year Percentage Change



Source: Bureau of the Census

Inventory of New Homes Available for Sale

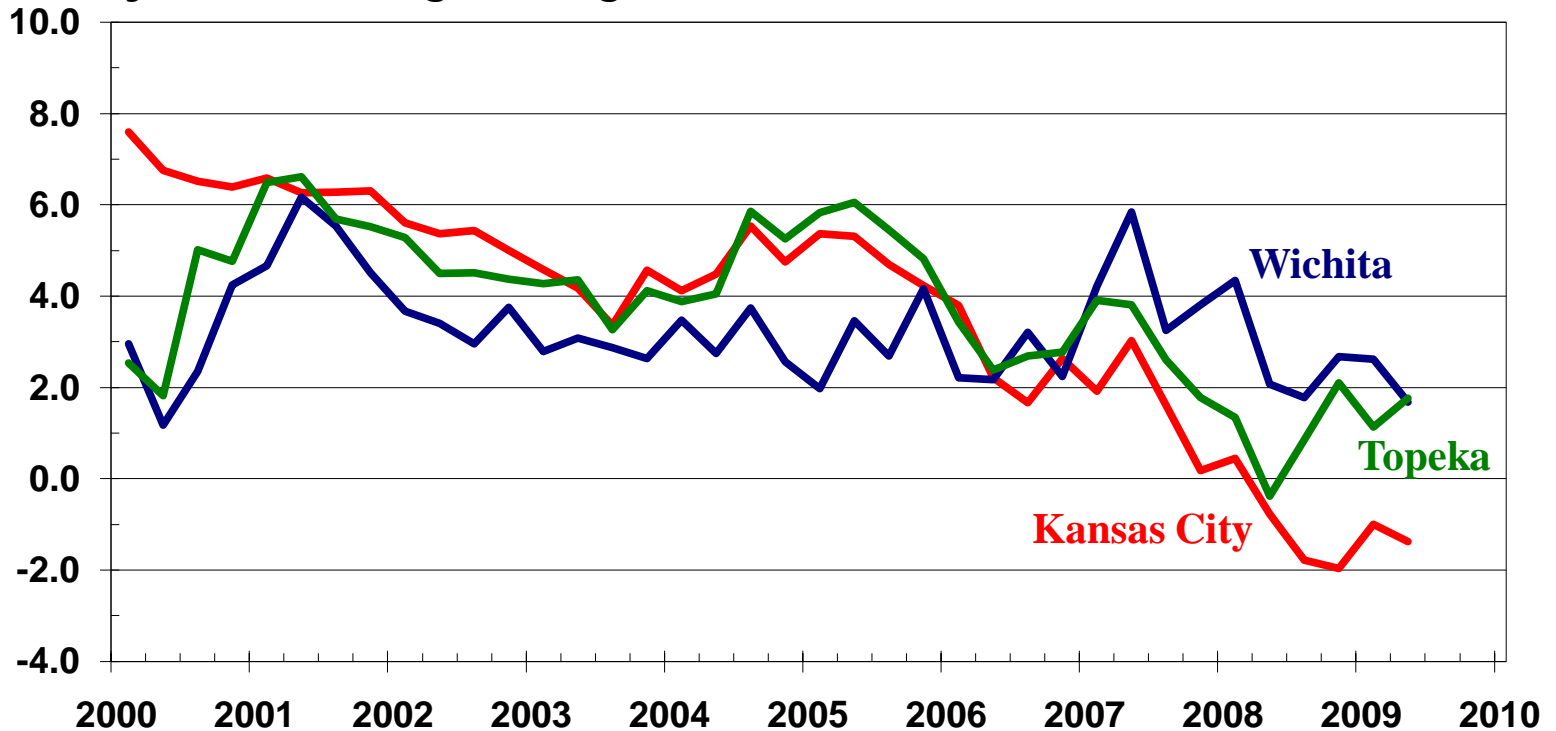
Months Supply (SA)



Sources: HUD; WSU Center for Real Estate
using data from SCK MLS and KCRAR

Kansas Home Price Appreciation

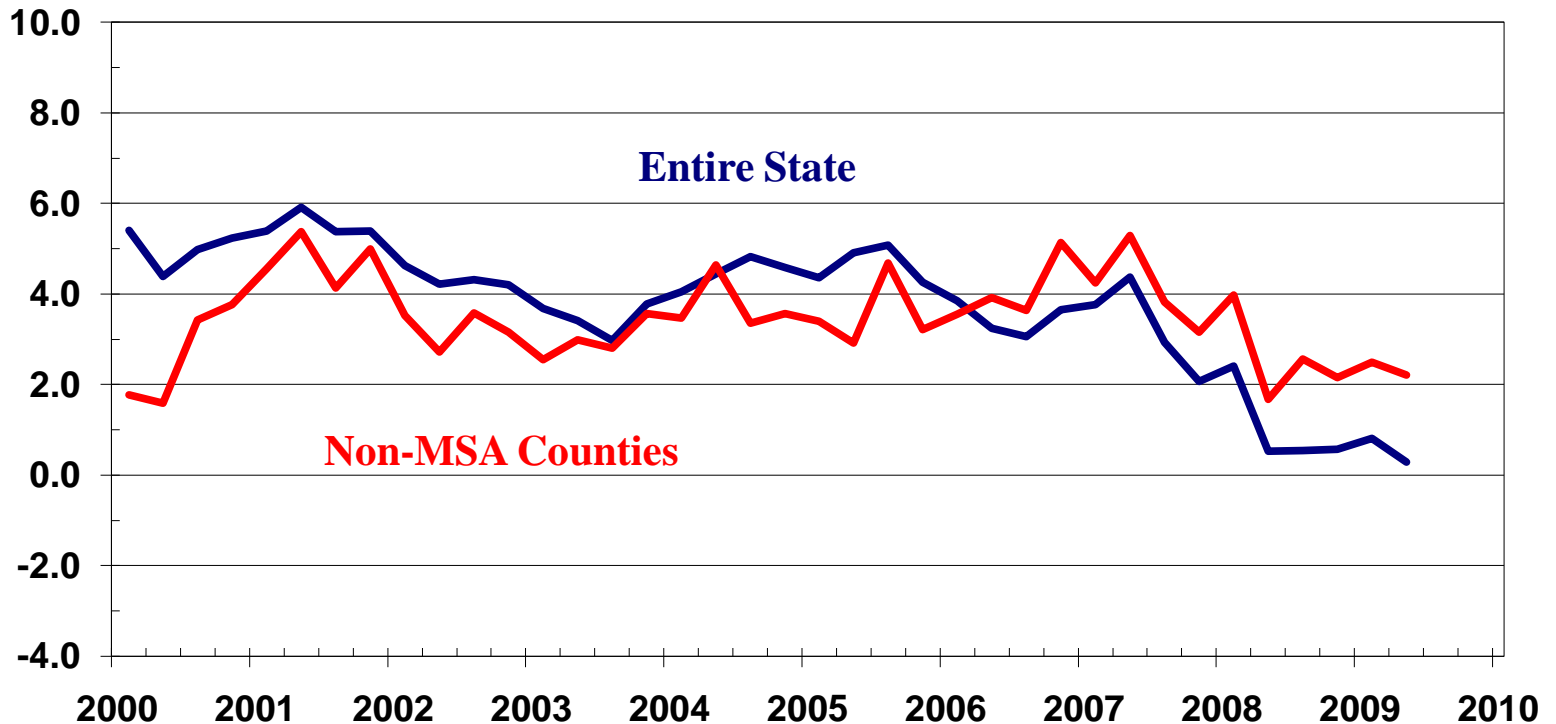
Year-over-year Percentage Change



Source: Federal Housing Finance Agency

Kansas Home Price Appreciation

Year-over-year Percentage Change



Source: Federal Housing Finance Agency



Wichita State University Center for Real Estate

*Laying a Foundation for
Real Estate in Kansas*



WICHITA STATE
UNIVERSITY

