



**JUMP INTO THE RING!**

# **2019 Wichita Housing Forecast**

**Dr. Stanley D. Longhofer**  
**WSU Center for Real Estate**  
**October 23, 2018**



# 2019 Forecast Sponsors



Security 1<sup>st</sup> Title



CREDIT UNION<sup>SM</sup>



# Thanks also to:



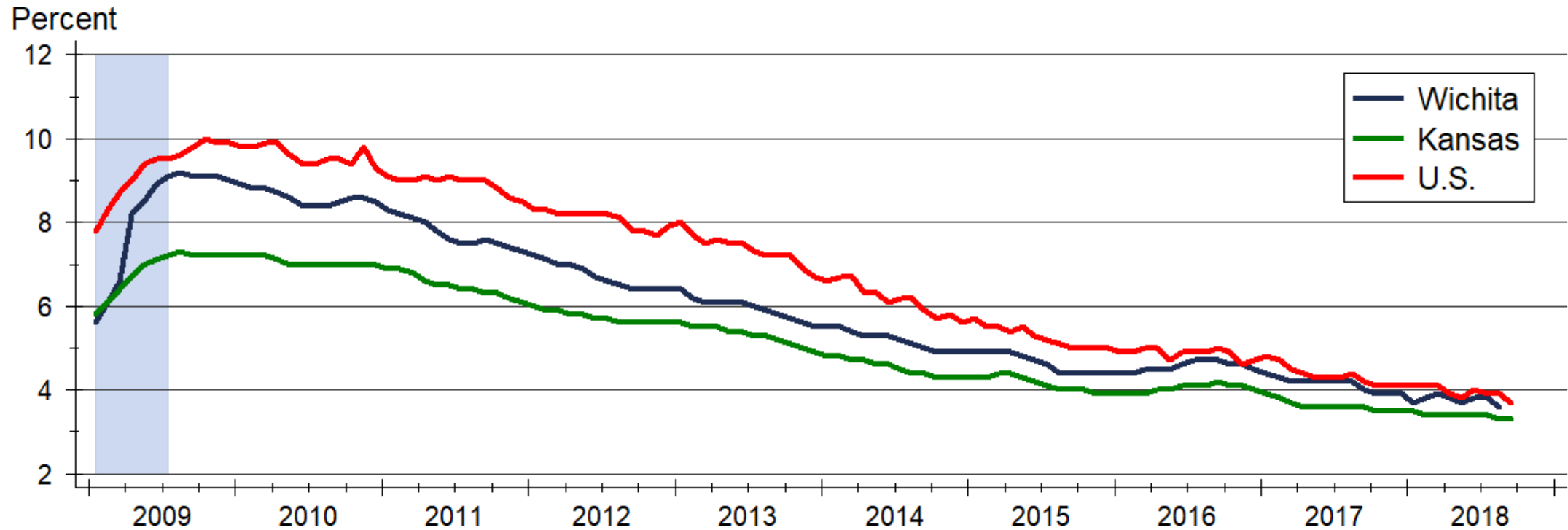
and participating  
REALTOR® MLS systems  
across Kansas



WICHITA STATE  
UNIVERSITY  
W. FRANK BARTON  
SCHOOL OF BUSINESS



# Wichita Unemployment Rate

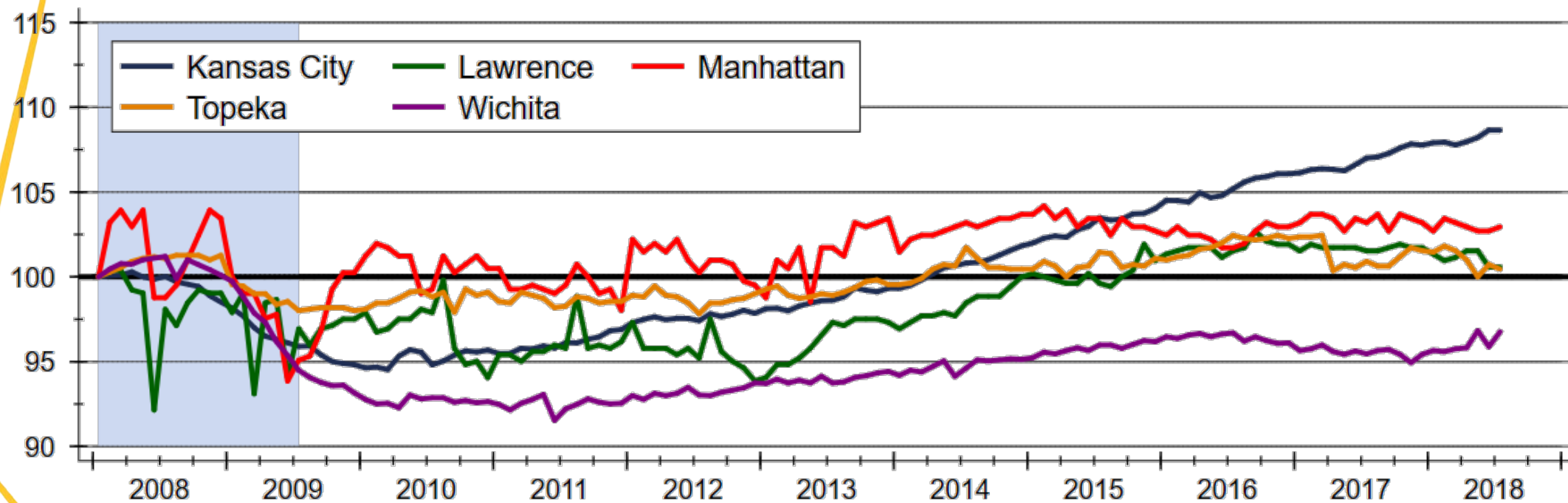


Source: U.S. Bureau of Labor Statistics

Data are seasonally adjusted

# Total Employment across Kansas

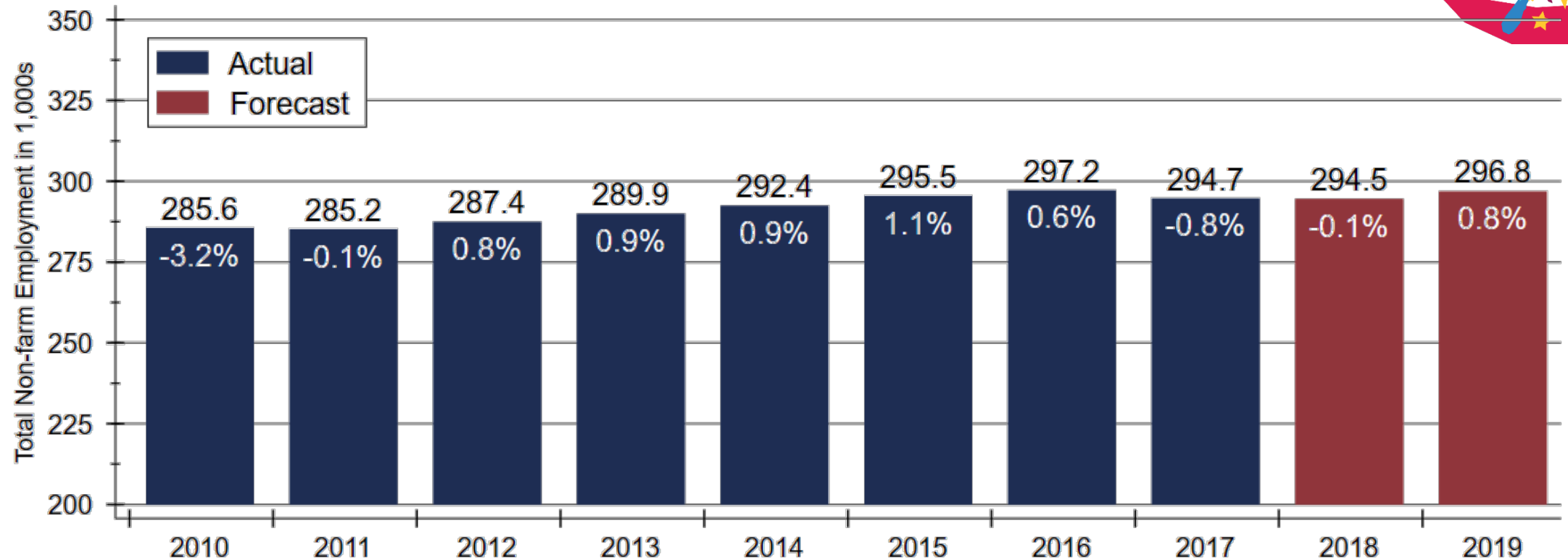
Index: 2008m1 = 100



Source: U.S. Bureau of Labor Statistics  
Indexes created from seasonally adjusted data

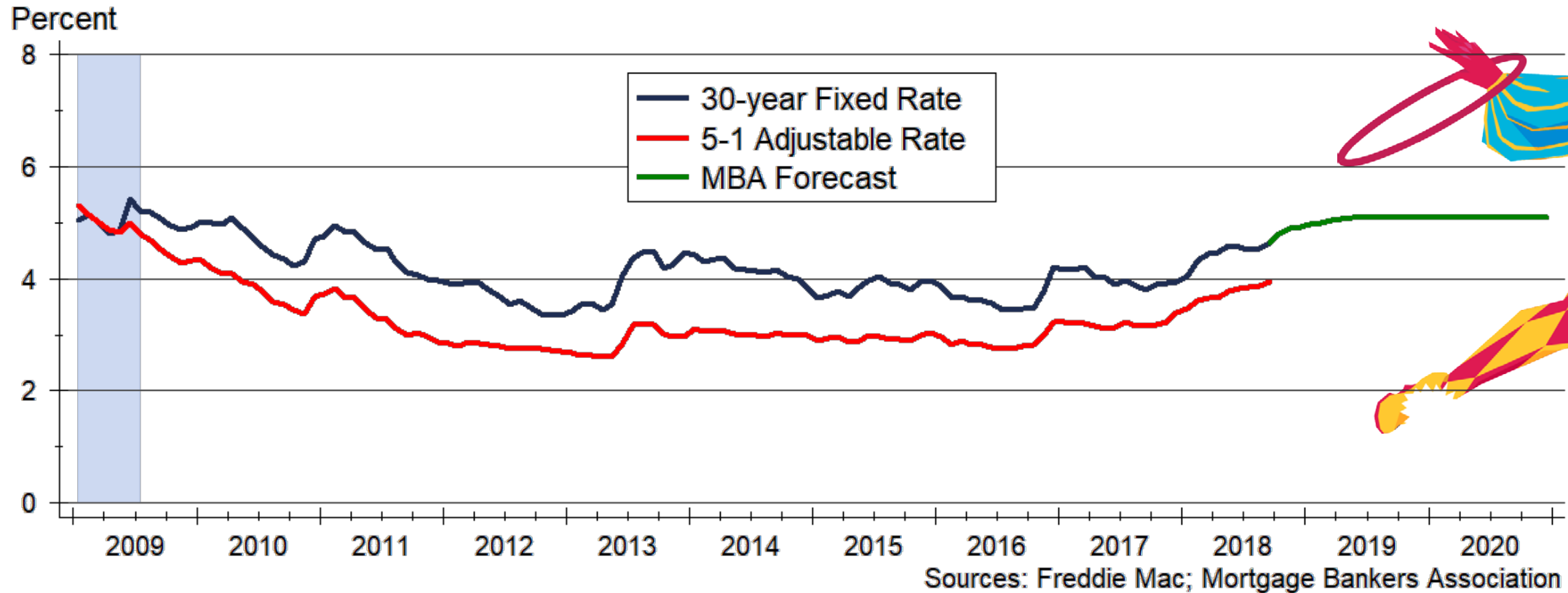


# Wichita Employment Forecast



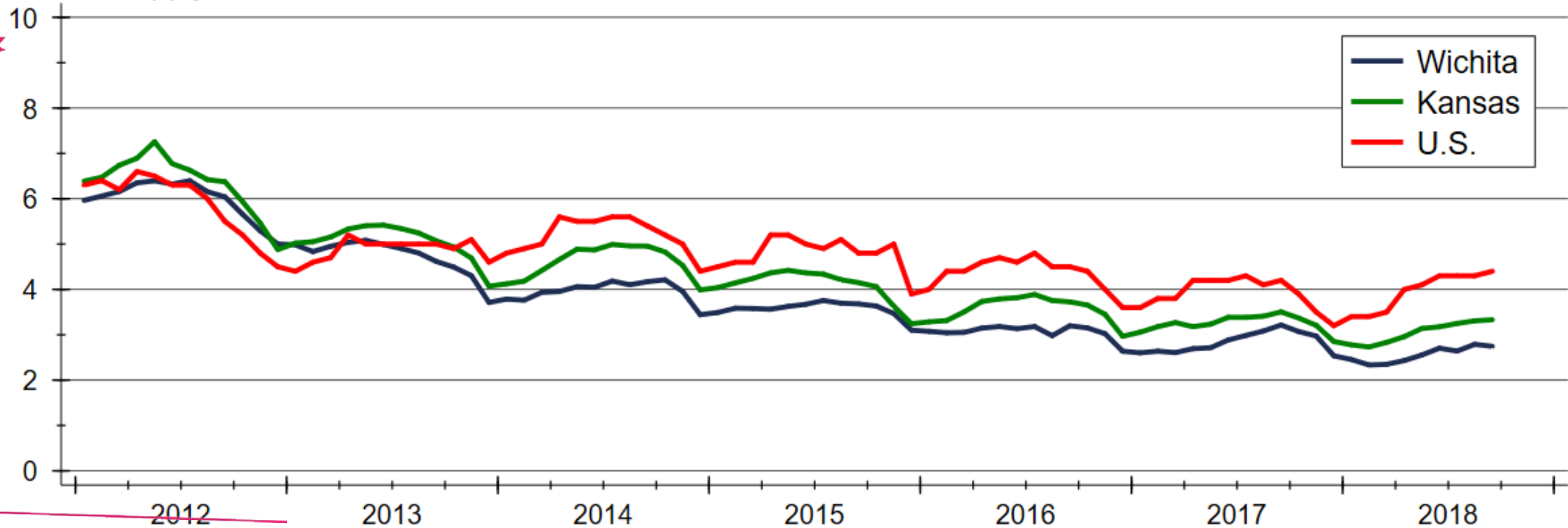
Sources: Kansas Department of Labor and WSU CEDBR

# Mortgage Rates Forecast



# Inventory of Homes for Sale

Months' Supply

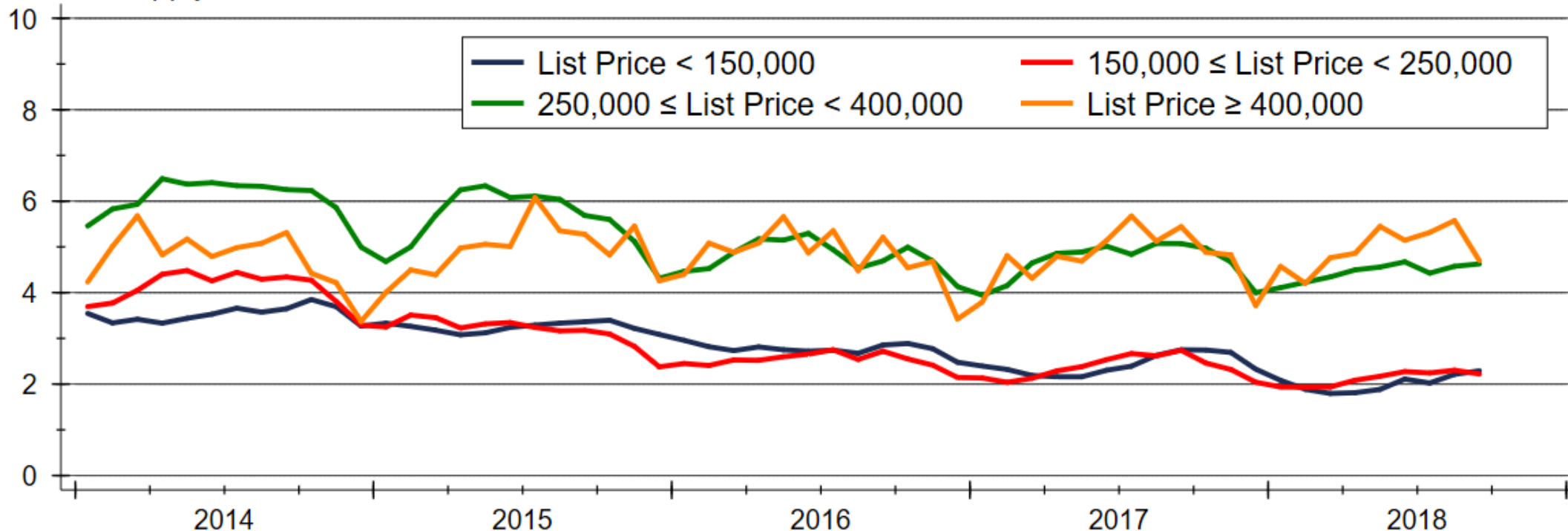


Sources: NAR, KAR and South Central Kansas MLS



# Home Inventories by Price Range

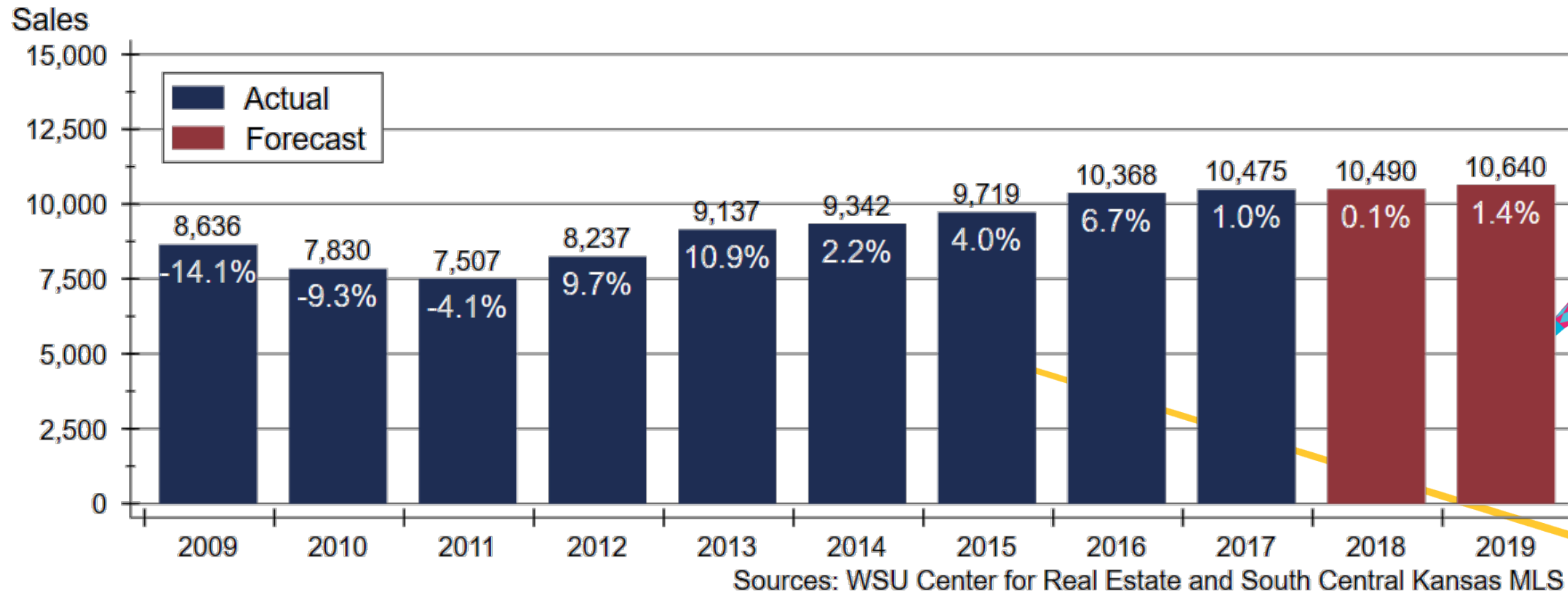
Months' Supply



Source: South Central Kansas MLS

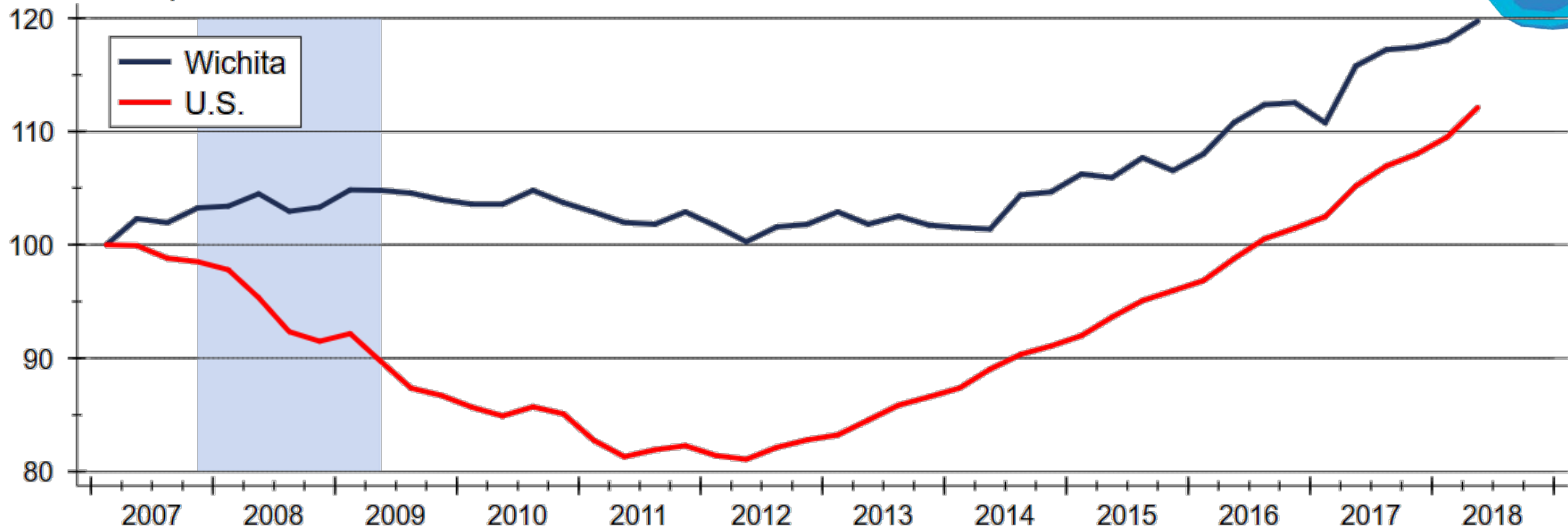


# Wichita Home Sales Forecast



# Home Price Appreciation since 2007

Index: 2007q1 = 100

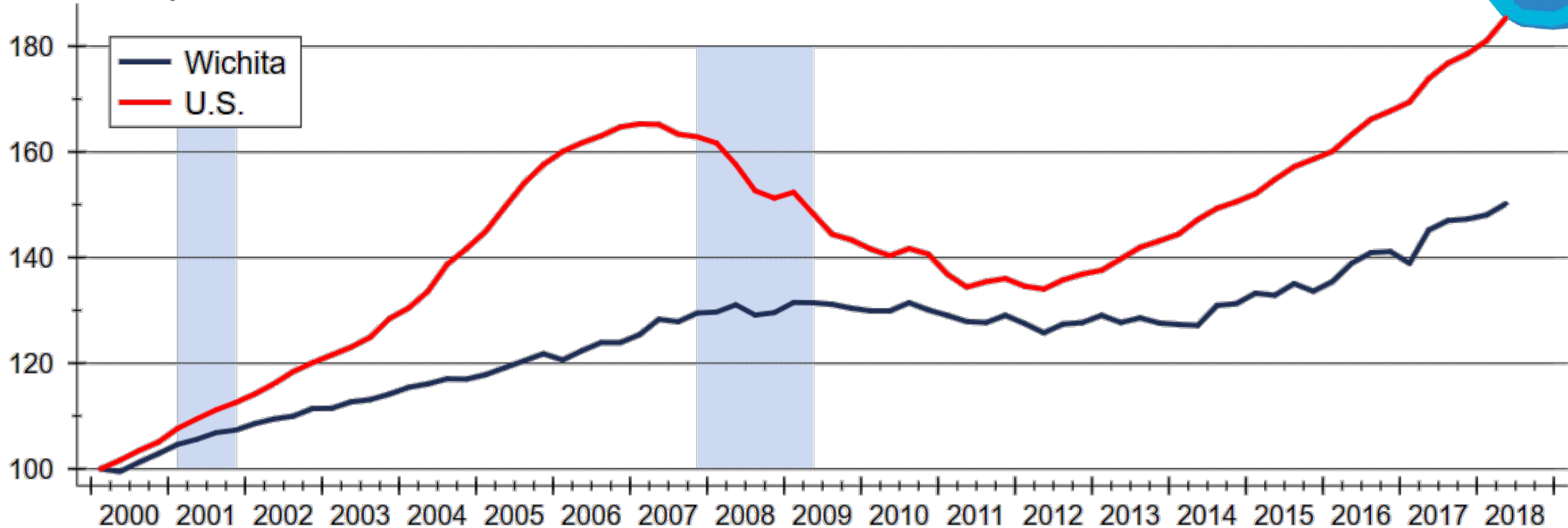


Source: Federal Housing Finance Agency (FHFA)



# Home Price Appreciation since 2000

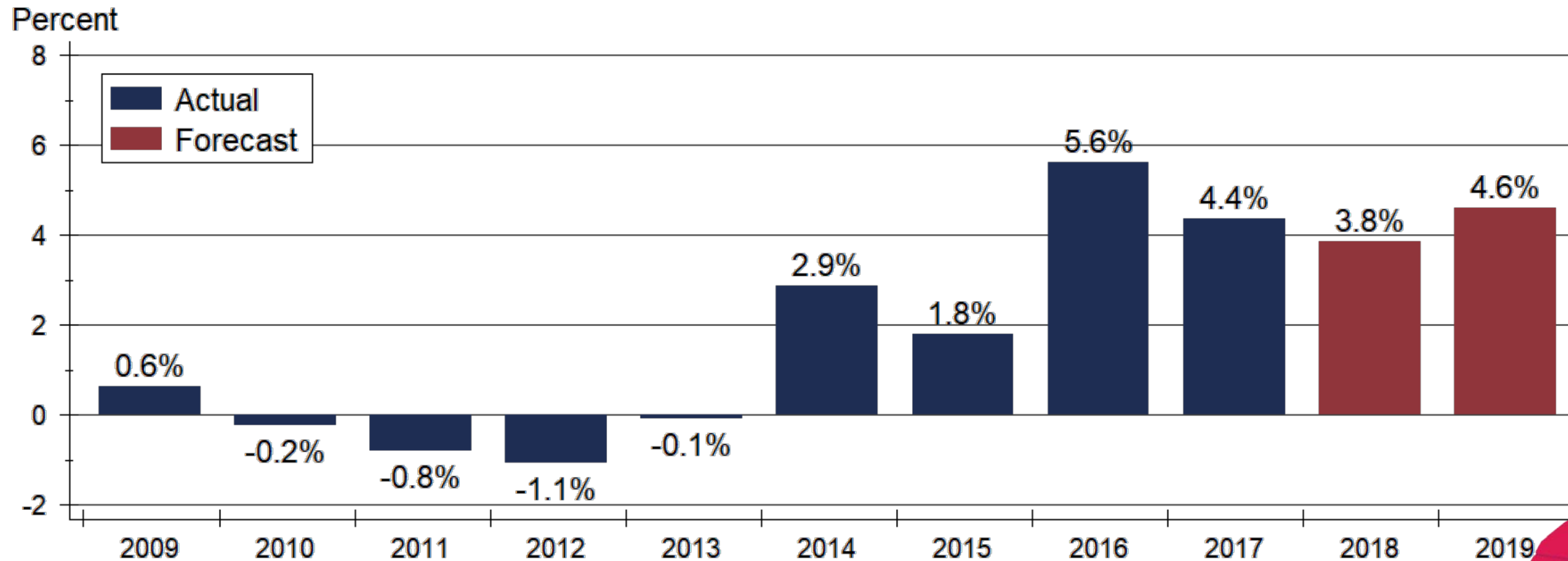
Index: 2000q1 = 100



Source: Federal Housing Finance Agency (FHFA)



# Home Price Appreciation Forecast

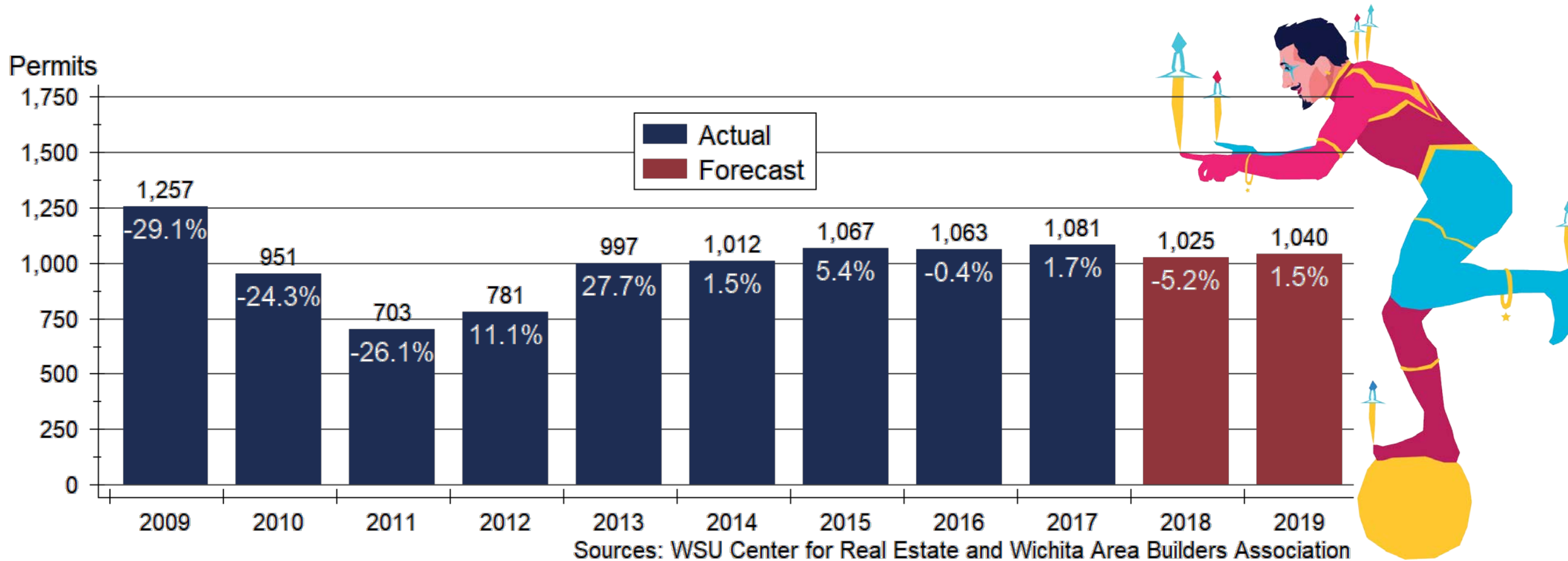


Sources: WSU Center for Real Estate and Federal Housing Finance Agency






# Wichita Home Construction Forecast

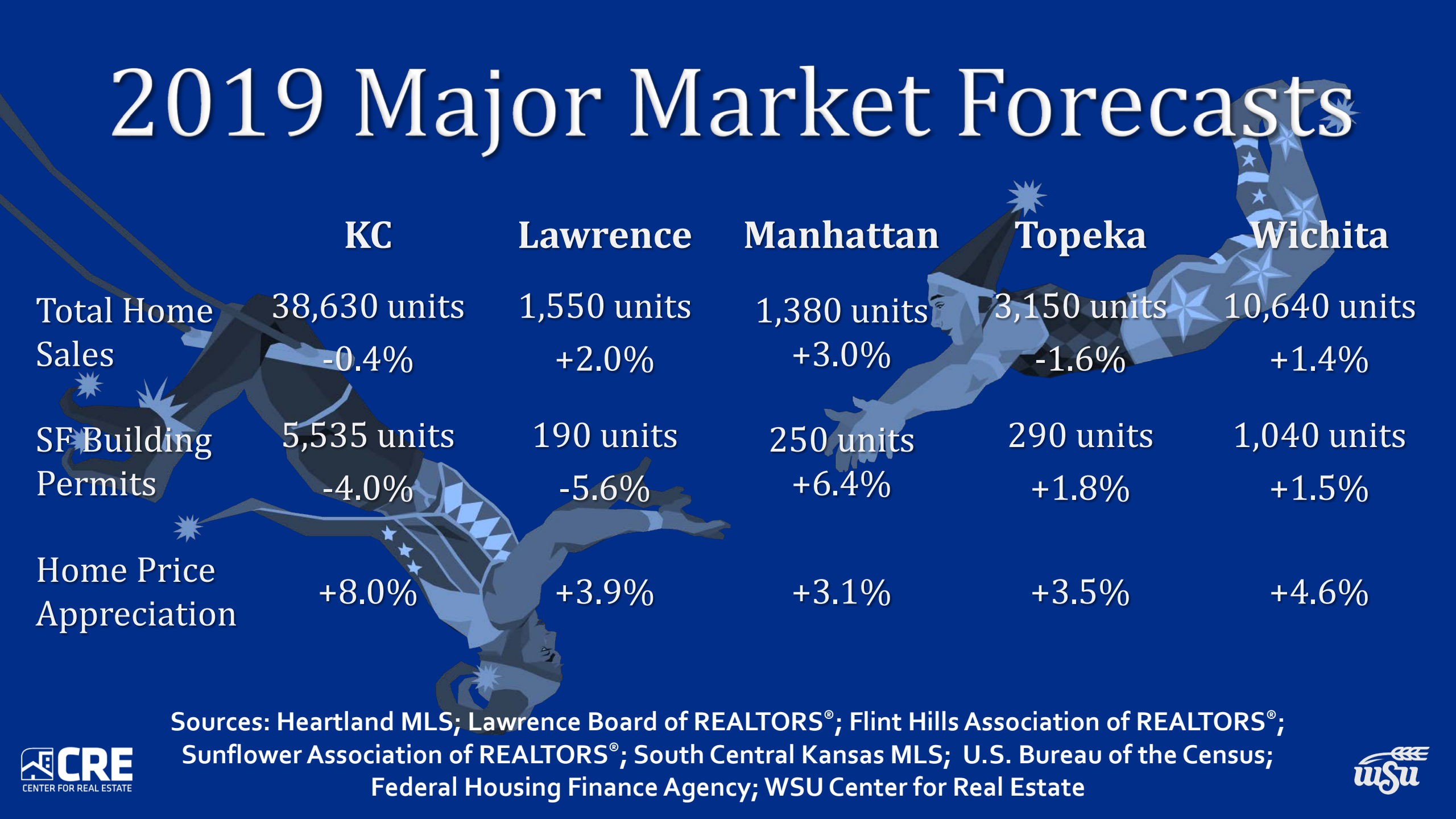


# 2019 Wichita Forecast



	2016 Actual	2017 Actual	2018 Forecast	2019 Forecast
Total Home Sales	1,444 units +4.4%	1,490 units +3.2%	1,520 units +2.0%	1,550 +2.0%
SF Building Permits	264 units +19.5%	206 units -22.0%	180 units -12.6%	190 units +5.6%
Home Price Appreciation	+7.2%	+4.2%	+4.8	+3.9

# 2019 Major Market Forecasts



	KC	Lawrence	Manhattan	Topeka	Wichita
Total Home Sales	38,630 units -0.4%	1,550 units +2.0%	1,380 units +3.0%	3,150 units -1.6%	10,640 units +1.4%
SF Building Permits	5,535 units -4.0%	190 units -5.6%	250 units +6.4%	290 units +1.8%	1,040 units +1.5%
Home Price Appreciation	+8.0%	+3.9%	+3.1%	+3.5%	+4.6%

Sources: Heartland MLS; Lawrence Board of REALTORS®; Flint Hills Association of REALTORS®; Sunflower Association of REALTORS®; South Central Kansas MLS; U.S. Bureau of the Census; Federal Housing Finance Agency; WSU Center for Real Estate

# 2019 Forecast Sponsors



Security 1<sup>st</sup> Title



# WSU Center for Real Estate

## Laying a Foundation for Real Estate in Kansas

*[www.wichita.edu/realestate](http://www.wichita.edu/realestate)*



WICHITA STATE  
UNIVERSITY  
W. FRANK BARTON  
SCHOOL OF BUSINESS

