

Lawrence Housing Market in 2018

Lawrence Regional Economic Outlook Conference

May 23, 2018

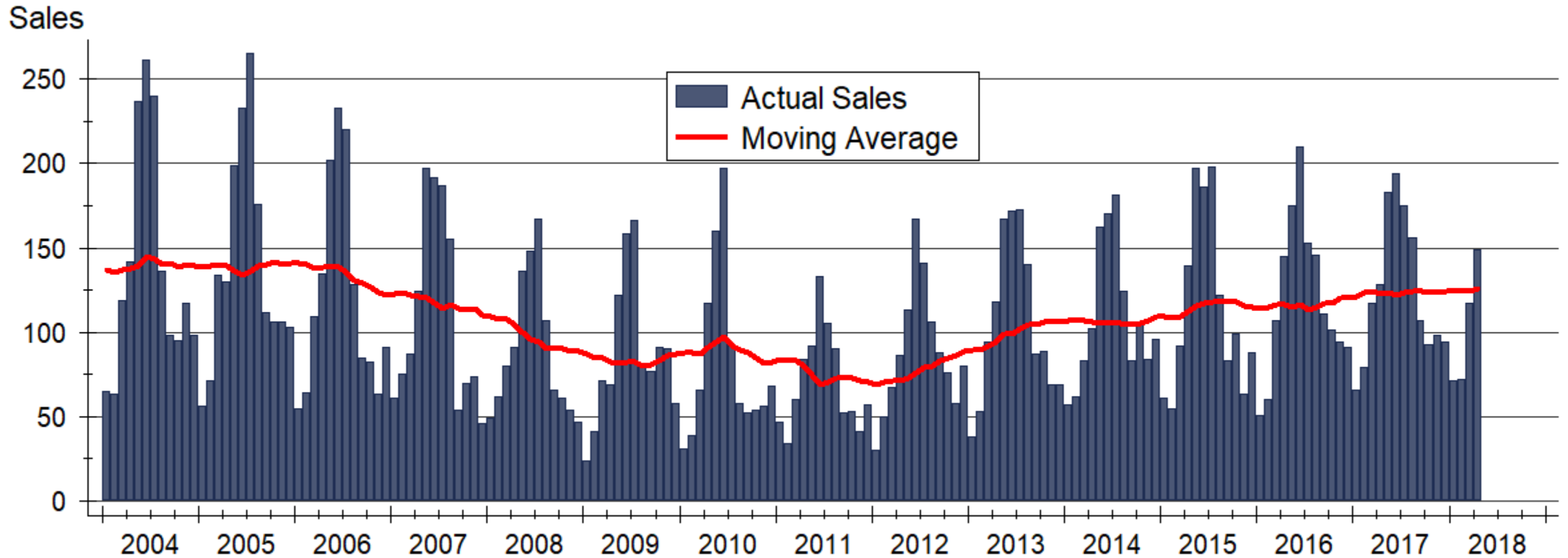
Dr. Stanley D. Longhofer
WSU Center for Real Estate



WICHITA STATE
UNIVERSITY
W. FRANK BARTON
SCHOOL OF BUSINESS

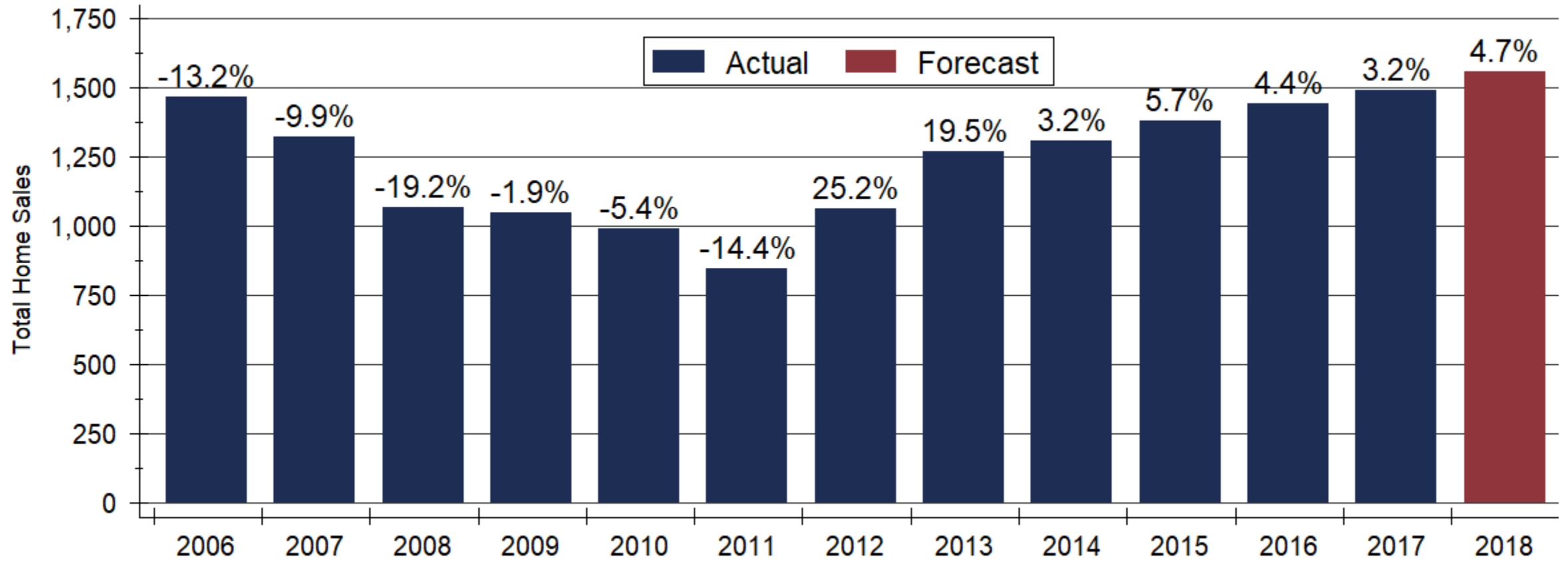


Lawrence Home Sales Activity



Source: Lawrence Board of REALTORS®

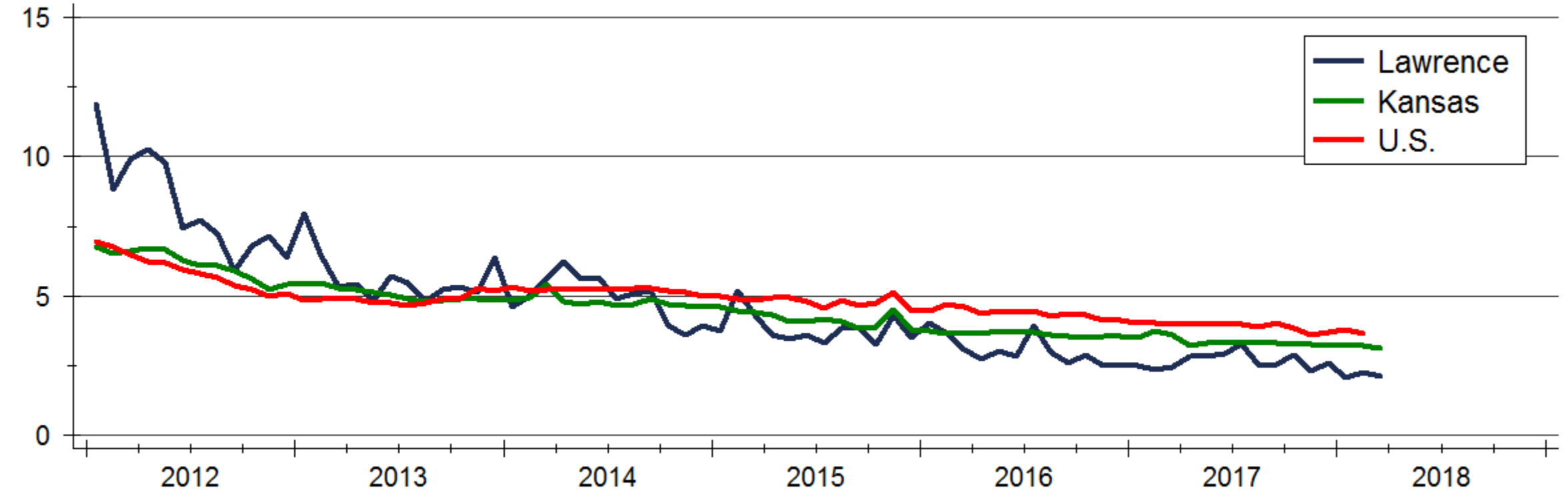
Lawrence Home Sales Forecast



Sources: WSU Center for Real Estate and Lawrence Board of REALTORS®

Inventory of Homes for Sale

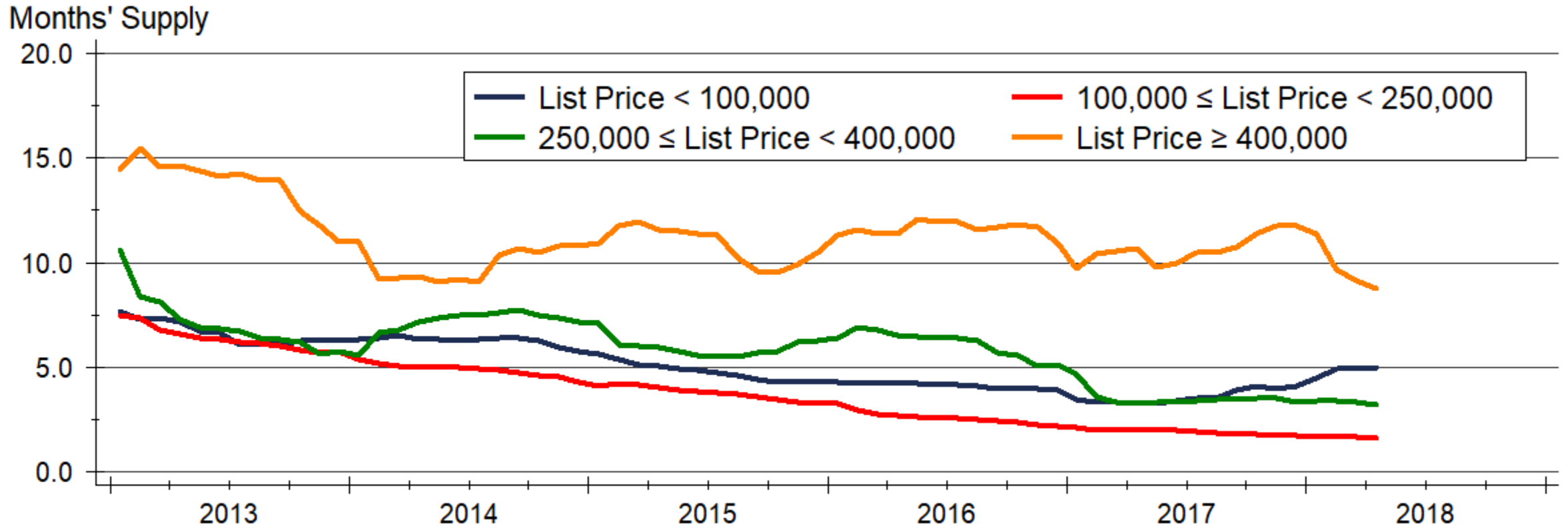
Months' Supply



Sources: NAR and Lawrence Board of REALTORS®

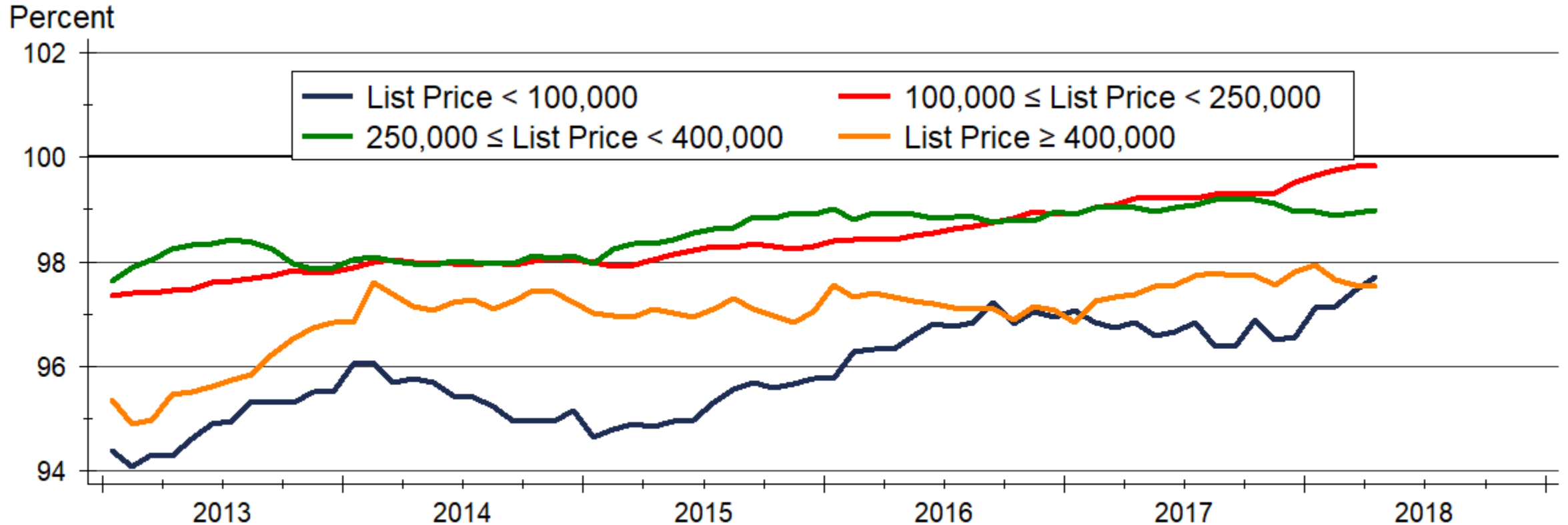
Note: Data are seasonally adjusted

Lawrence Home Inventories by Price Range



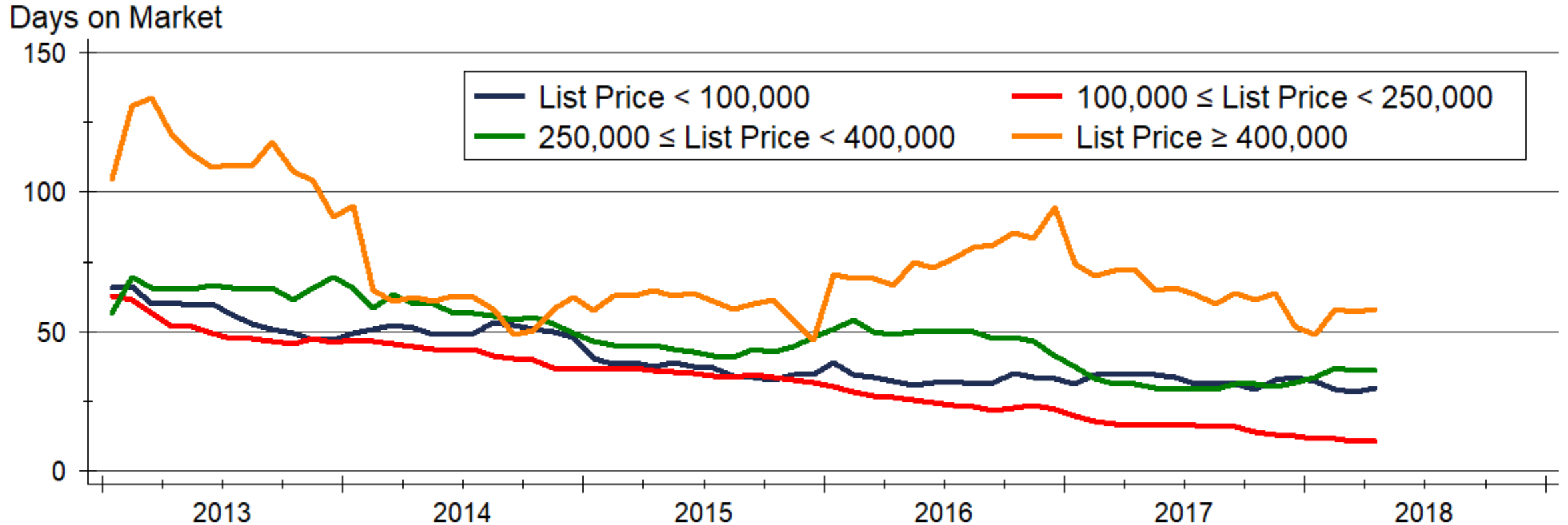
Source: Lawrence Board of REALTORS®
Data are 12-month lagging moving averages

Median Sale Prices as Percent of List Price



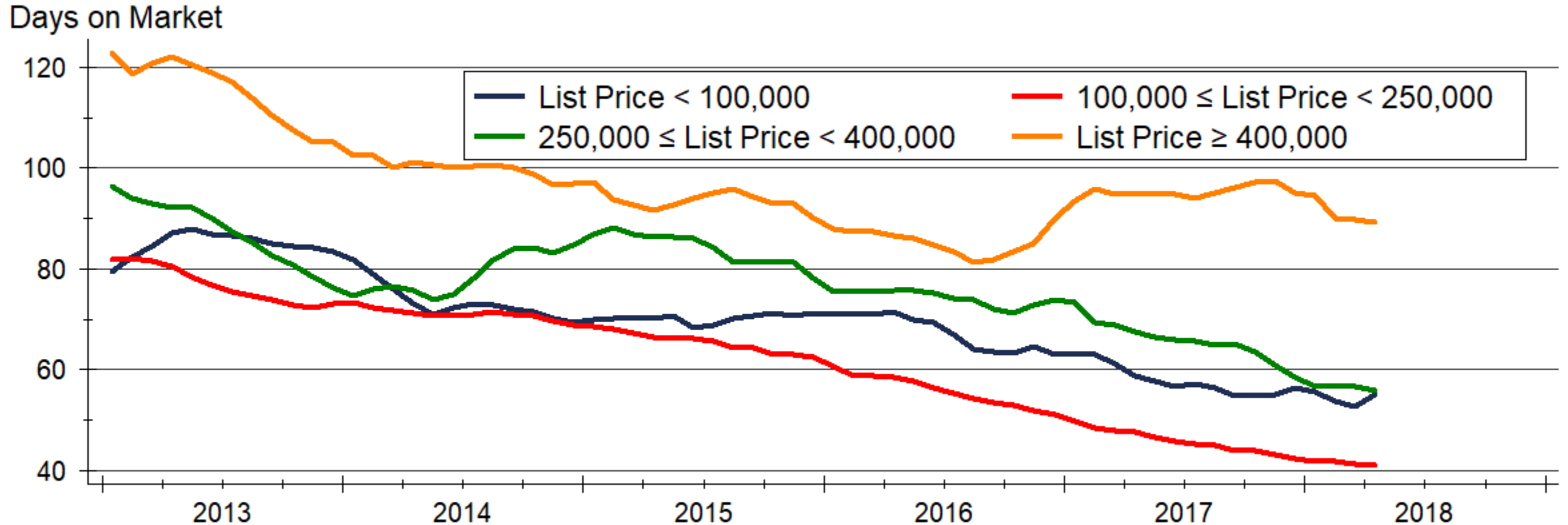
Source: Lawrence Board of REALTORS®
Data are 12-month lagging moving averages

Time on Market for Sold Listings



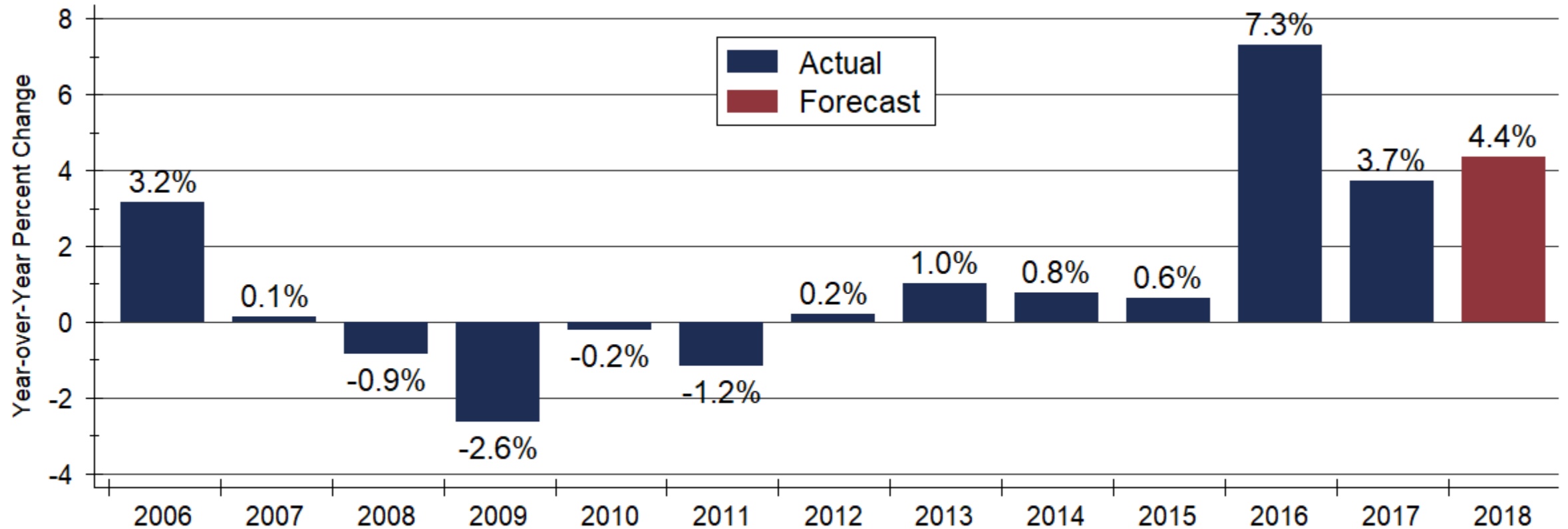
Source: Lawrence Board of REALTORS®
Data are 12-month lagging moving averages

Time on Market for Active Listings



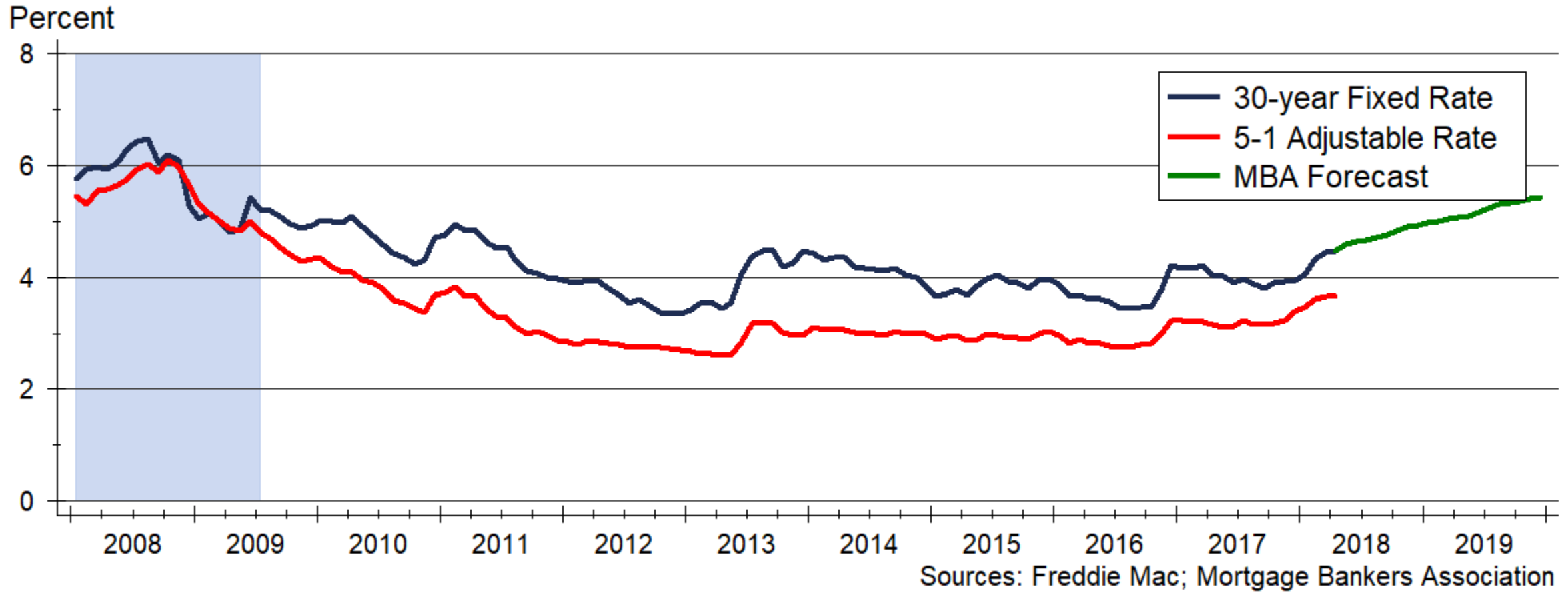
Source: Lawrence Board of REALTORS®
Data are 12-month lagging moving averages

Lawrence Home Price Appreciation Forecast

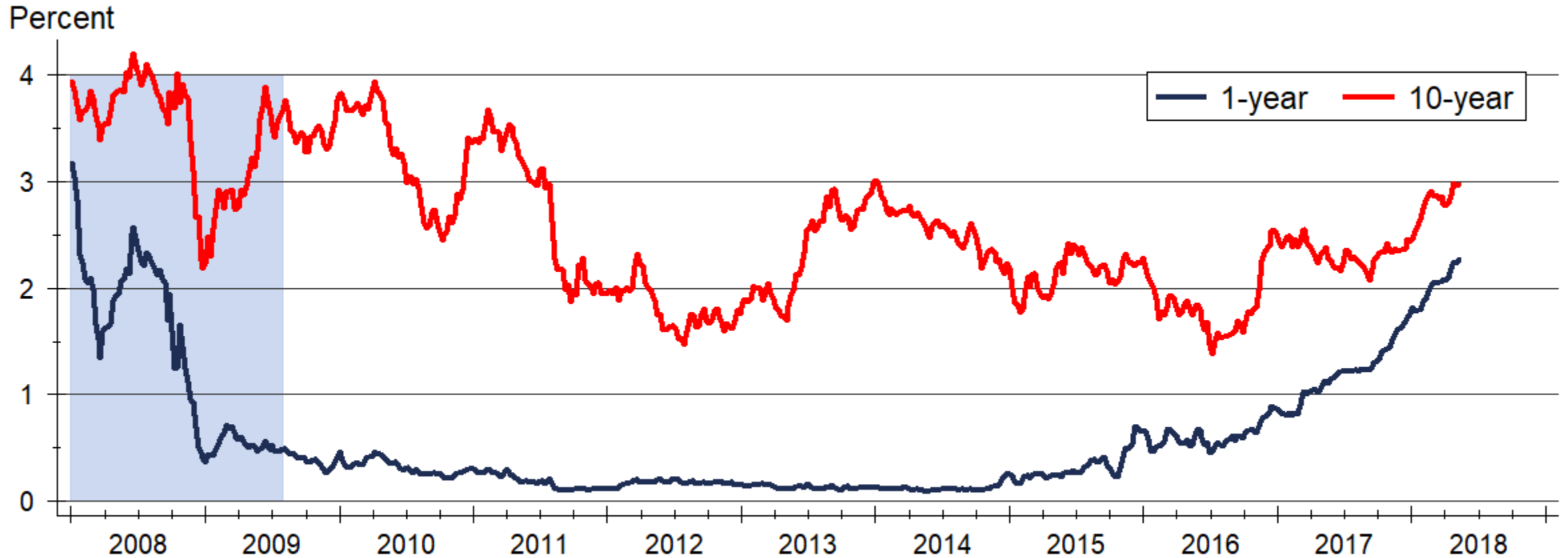


Sources: WSU Center for Real Estate and Federal Housing Finance Agency
Appreciation calculated using 4th quarter values of the FHFA all-transactions house price index

Monthly Mortgage Rates

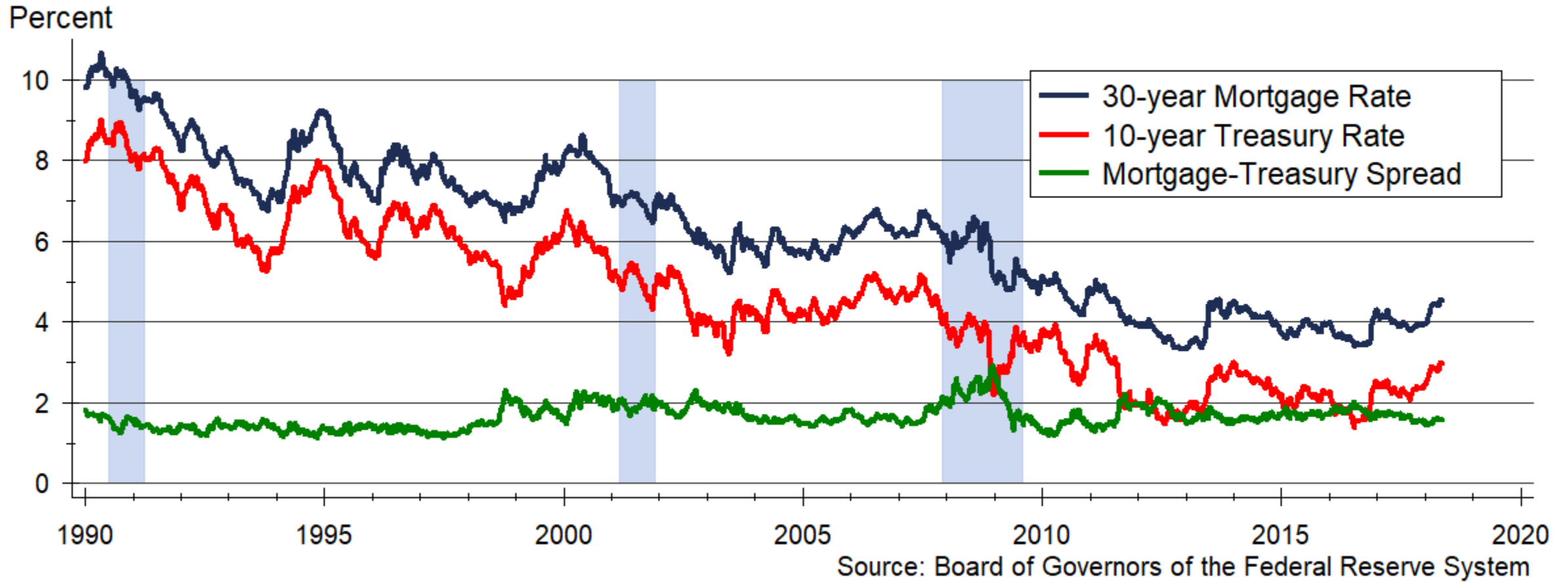


U.S. Treasury Rates



Source: Board of Governors of the Federal Reserve System

Mortgage-Treasury Spread



WSU Center for Real Estate

Laying a Foundation for Real Estate in Kansas

www.wichita.edu/realestate



WICHITA STATE
UNIVERSITY
W. FRANK BARTON
SCHOOL OF BUSINESS

