



JUMP INTO THE RING!

2019 Wichita Housing Forecast

Dr. Stanley D. Longhofer
WSU Center for Real Estate
January 10, 2019



2019 Forecast Sponsors



Security 1st Title



CREDIT UNIONSM



Thanks also to:



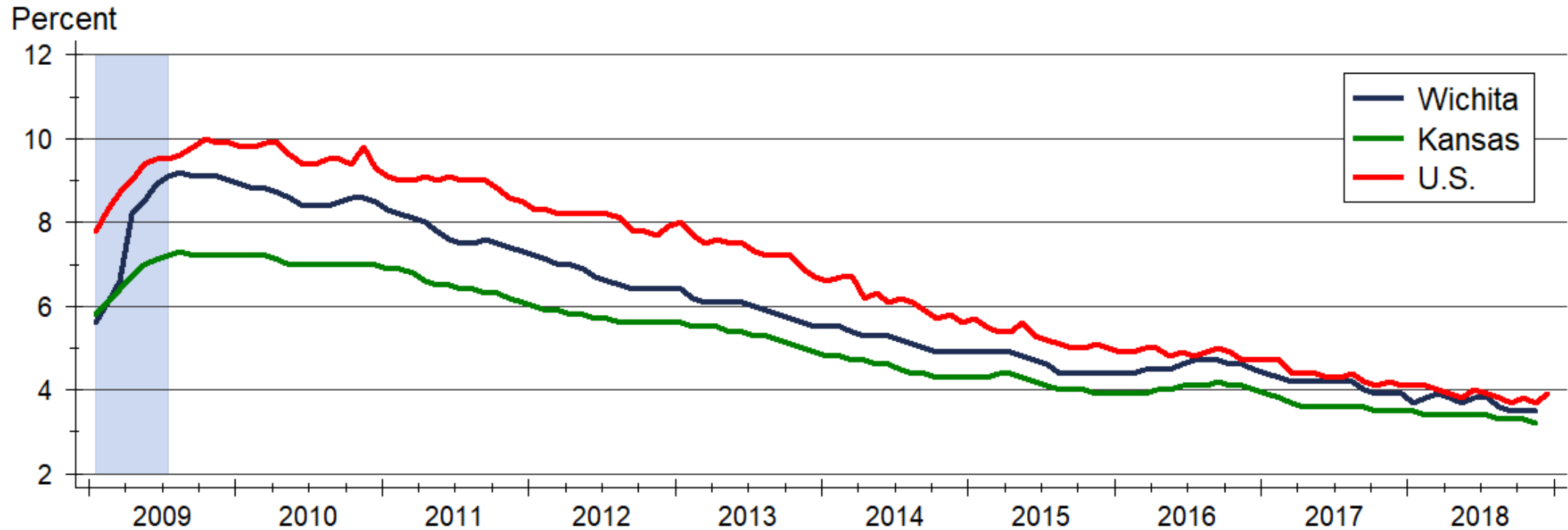
and participating
REALTOR® MLS systems
across Kansas



WICHITA STATE
UNIVERSITY
W. FRANK BARTON
SCHOOL OF BUSINESS



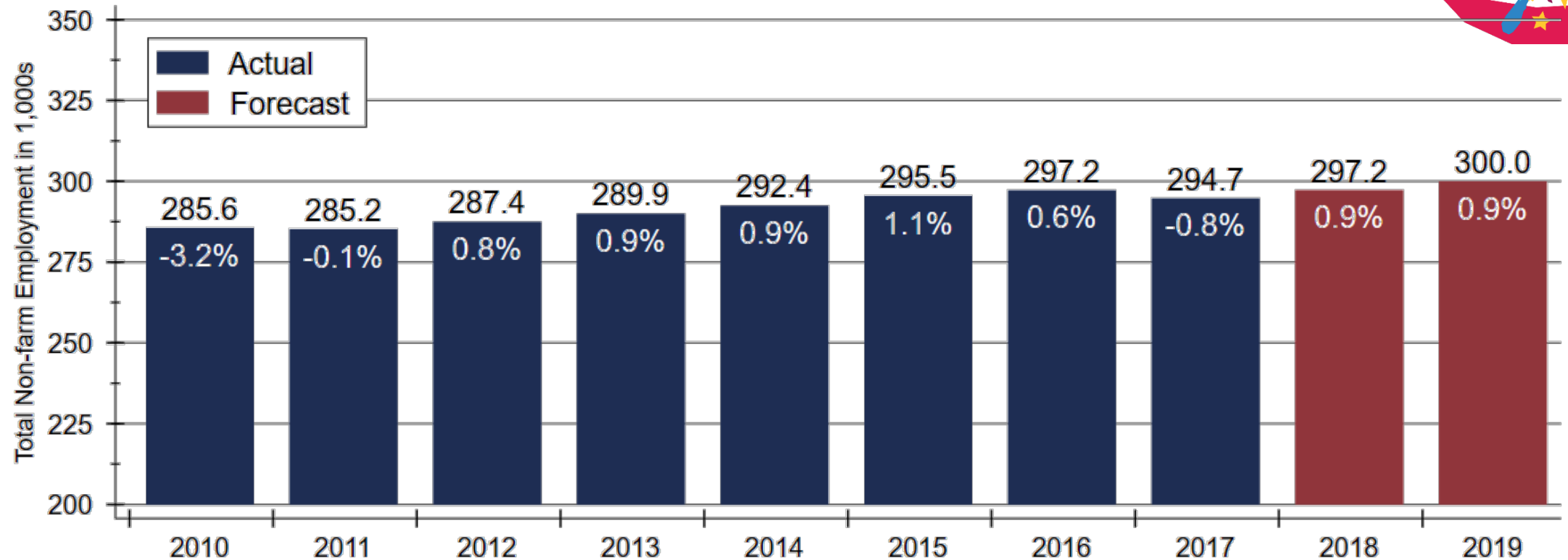
Wichita Unemployment Rate



Source: U.S. Bureau of Labor Statistics

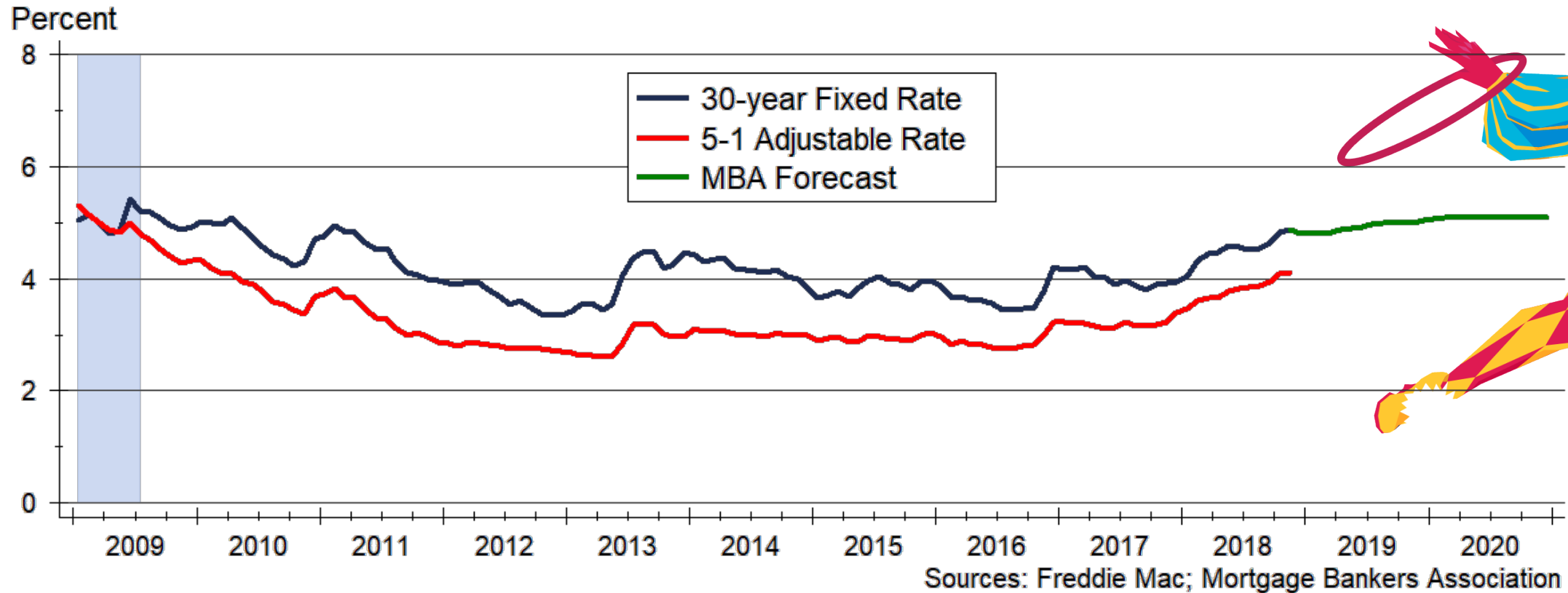
Data are seasonally adjusted

Wichita Employment Forecast



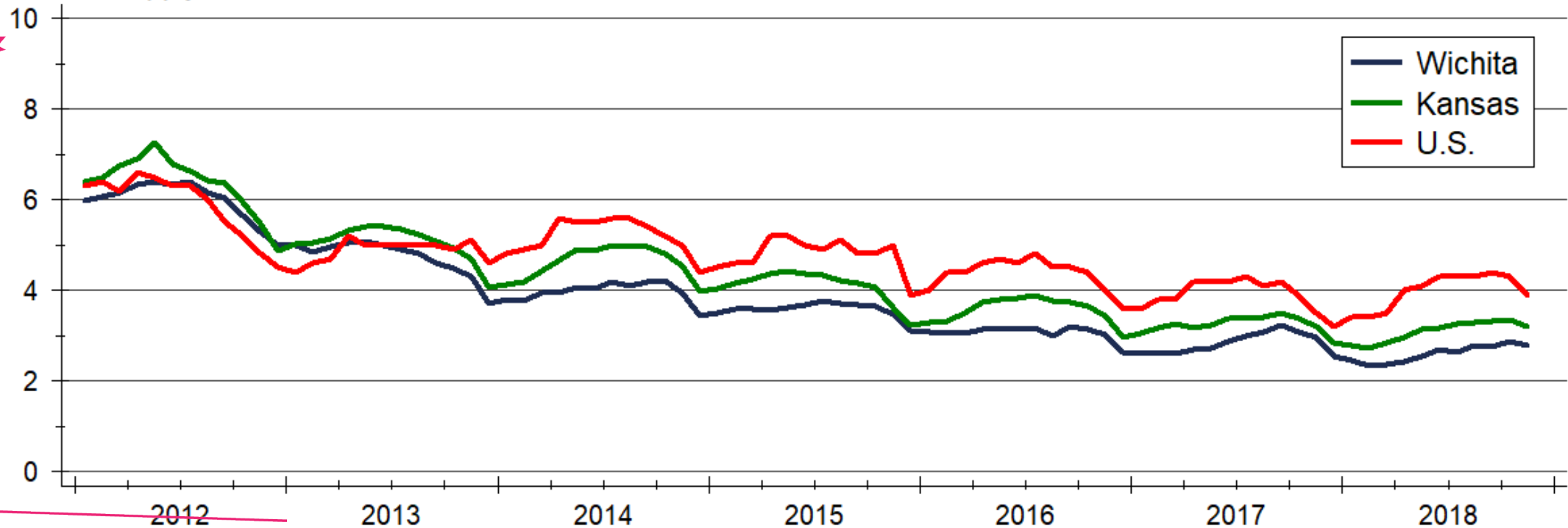
Sources: Kansas Department of Labor and WSU CEDBR

Mortgage Rates Forecast



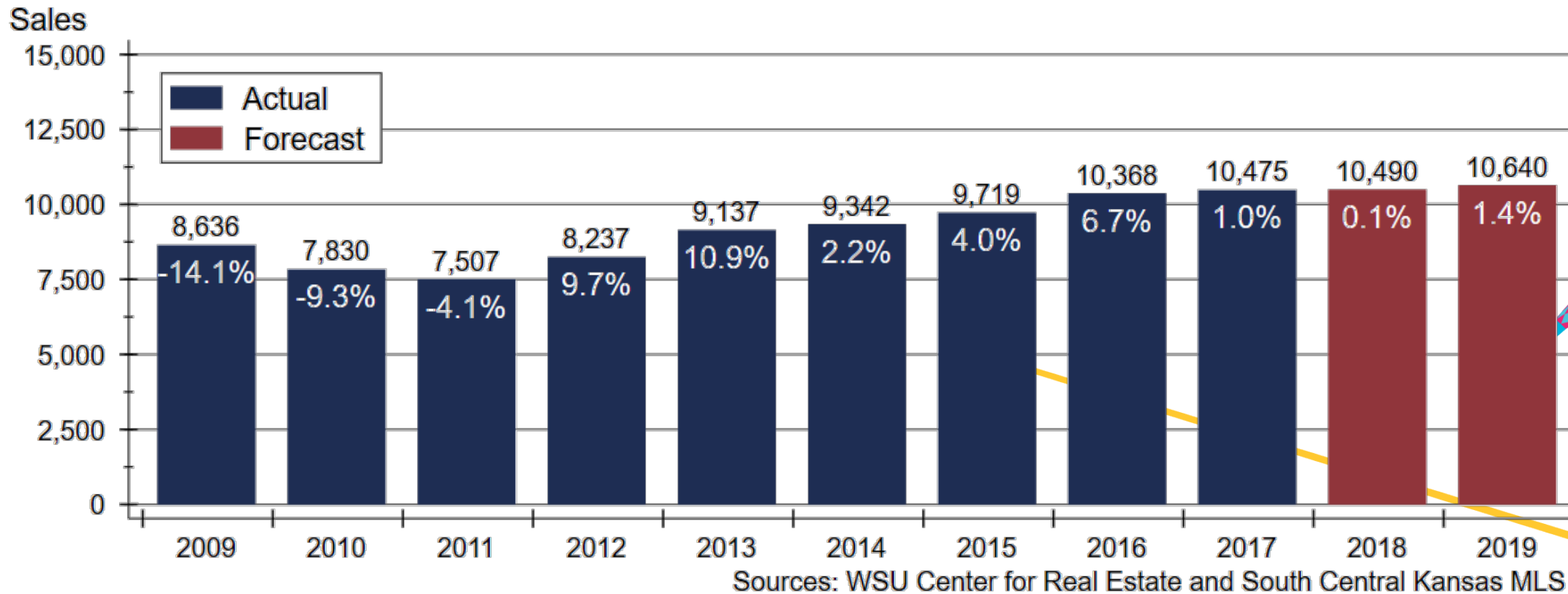
Inventory of Homes for Sale

Months' Supply



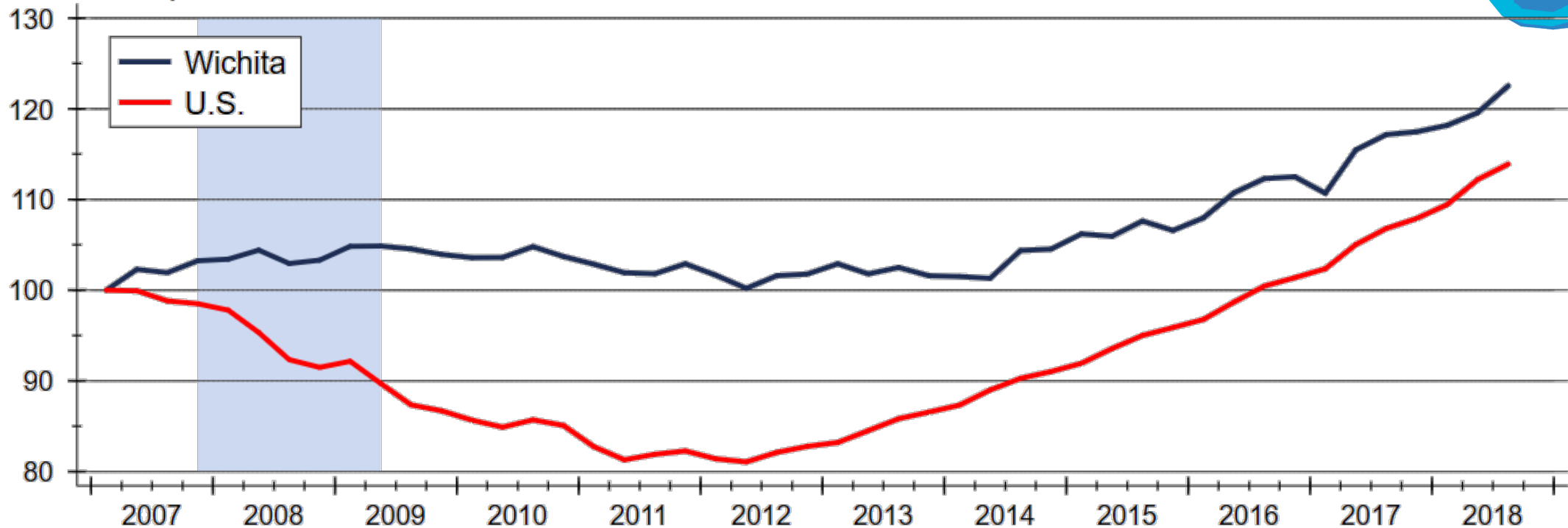
Sources: NAR, KAR and South Central Kansas MLS

Wichita Home Sales Forecast



Home Price Appreciation since 2007

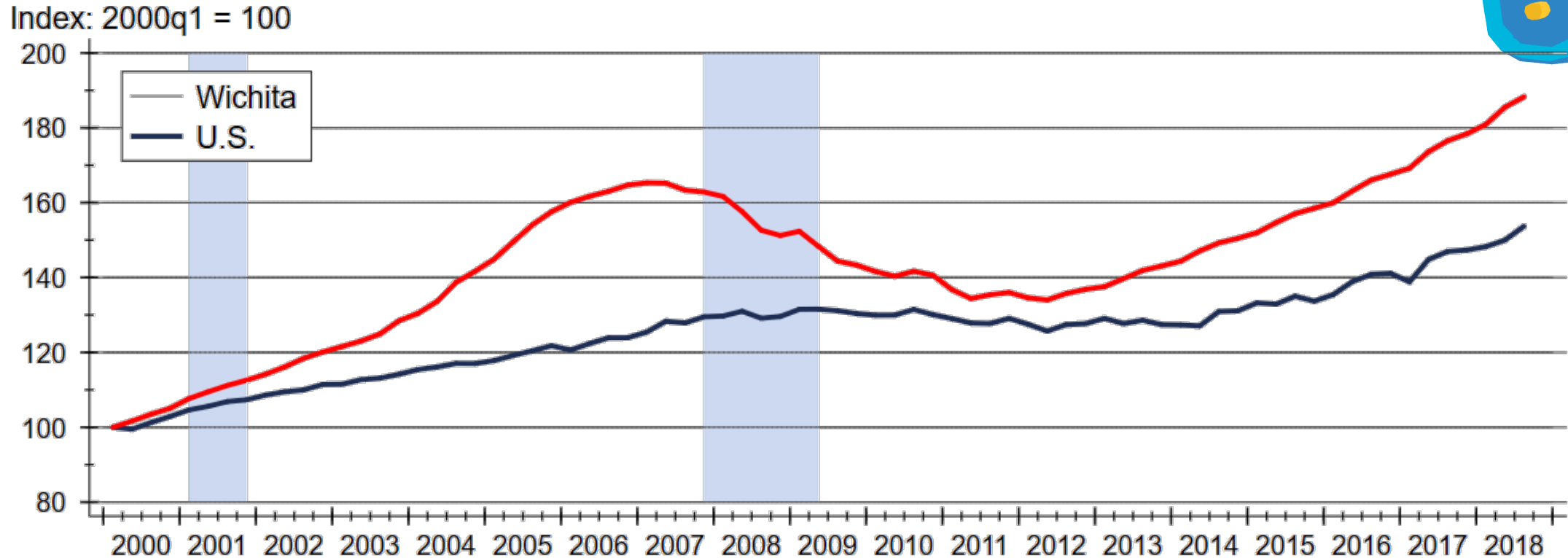
Index: 2007q1 = 100



Source: Federal Housing Finance Agency (FHFA)



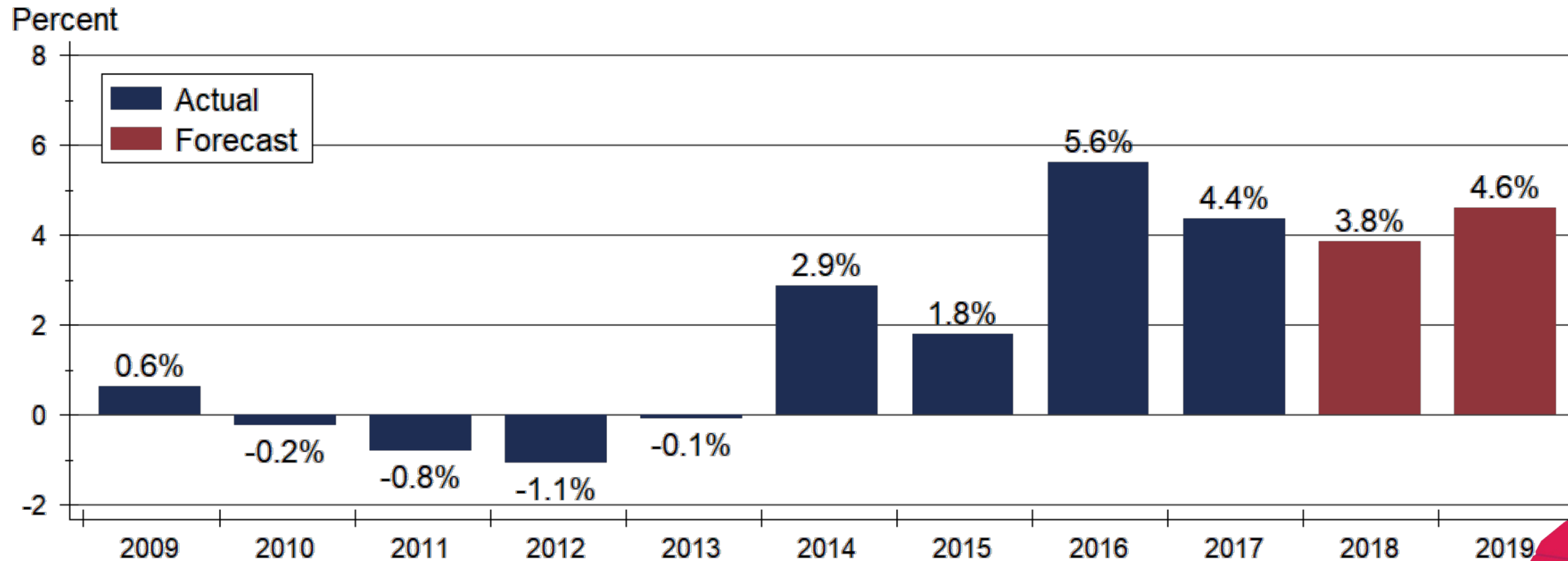
Home Price Appreciation since 2000



Source: Federal Housing Finance Agency (FHFA)



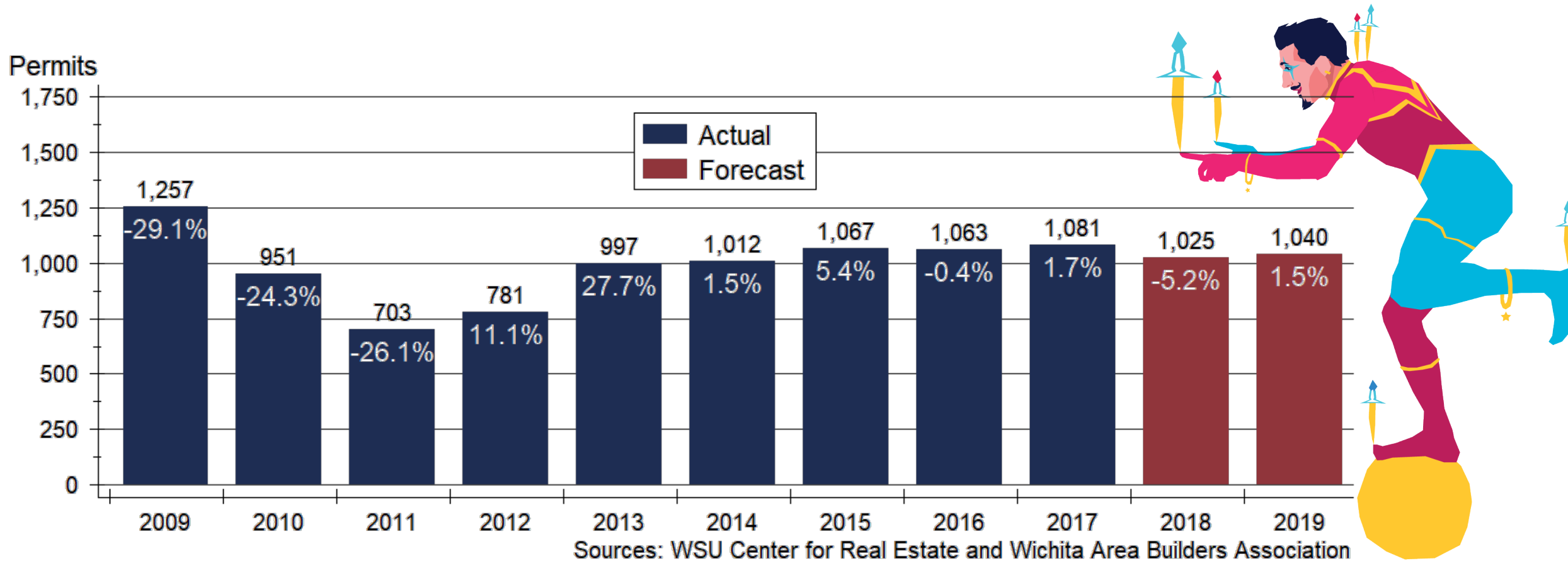
Home Price Appreciation Forecast



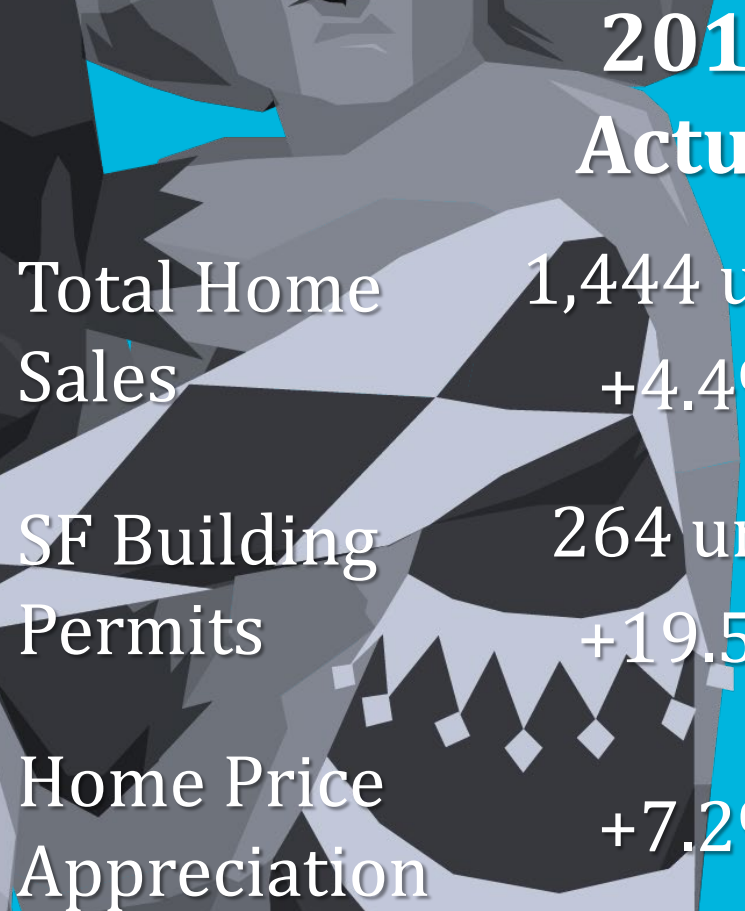
Sources: WSU Center for Real Estate and Federal Housing Finance Agency



Wichita Home Construction Forecast

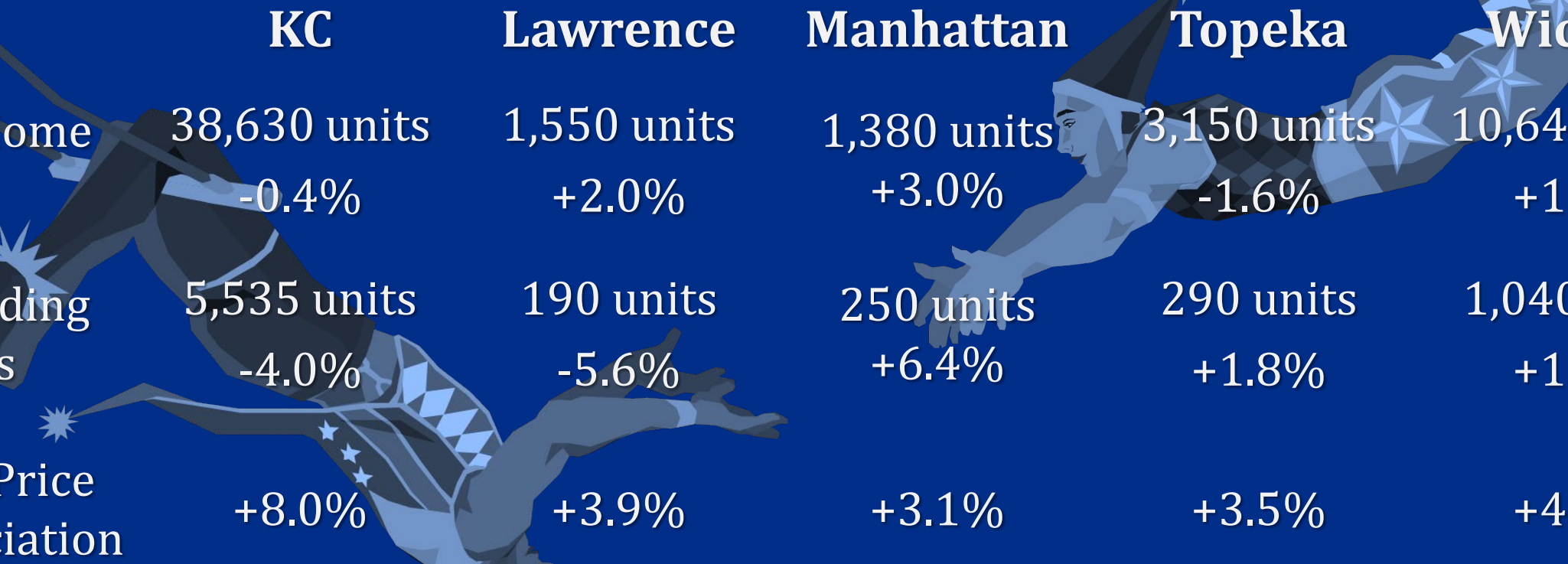


2019 Wichita Forecast



| | 2016 Actual | 2017 Actual | 2018 Forecast | 2019 Forecast |
|-------------------------|----------------------|----------------------|----------------------|--------------------|
| Total Home Sales | 1,444 units +4.4% | 1,490 units +3.2% | 1,520 units +2.0% | 1,550 +2.0% |
| SF Building Permits | 264 units +19.5% | 206 units -22.0% | 180 units -12.6% | 190 units +5.6% |
| Home Price Appreciation | +7.2% | +4.2% | +4.8 | +3.9 |

2019 Major Market Forecasts



| | KC | Lawrence | Manhattan | Topeka | Wichita |
|-------------------------|-----------------------|----------------------|----------------------|----------------------|-----------------------|
| Total Home Sales | 38,630 units -0.4% | 1,550 units +2.0% | 1,380 units +3.0% | 3,150 units -1.6% | 10,640 units +1.4% |
| SF Building Permits | 5,535 units -4.0% | 190 units -5.6% | 250 units +6.4% | 290 units +1.8% | 1,040 units +1.5% |
| Home Price Appreciation | +8.0% | +3.9% | +3.1% | +3.5% | +4.6% |

Sources: Heartland MLS; Lawrence Board of REALTORS®; Flint Hills Association of REALTORS®; Sunflower Association of REALTORS®; South Central Kansas MLS; U.S. Bureau of the Census; Federal Housing Finance Agency; WSU Center for Real Estate

2019 Forecast Sponsors



Security 1st Title



CREDIT UNIONSM



WSU Center for Real Estate

Laying a Foundation for Real Estate in Kansas

www.wichita.edu/realestate



WICHITA STATE
UNIVERSITY
W. FRANK BARTON
SCHOOL OF BUSINESS

