



JUMP INTO THE RING!

2019 Wichita Housing Forecast

Dr. Stanley D. Longhofer
WSU Center for Real Estate
November 13, 2018



2019 Forecast Sponsors



Security 1st Title



CREDIT UNIONSM



Thanks also to:



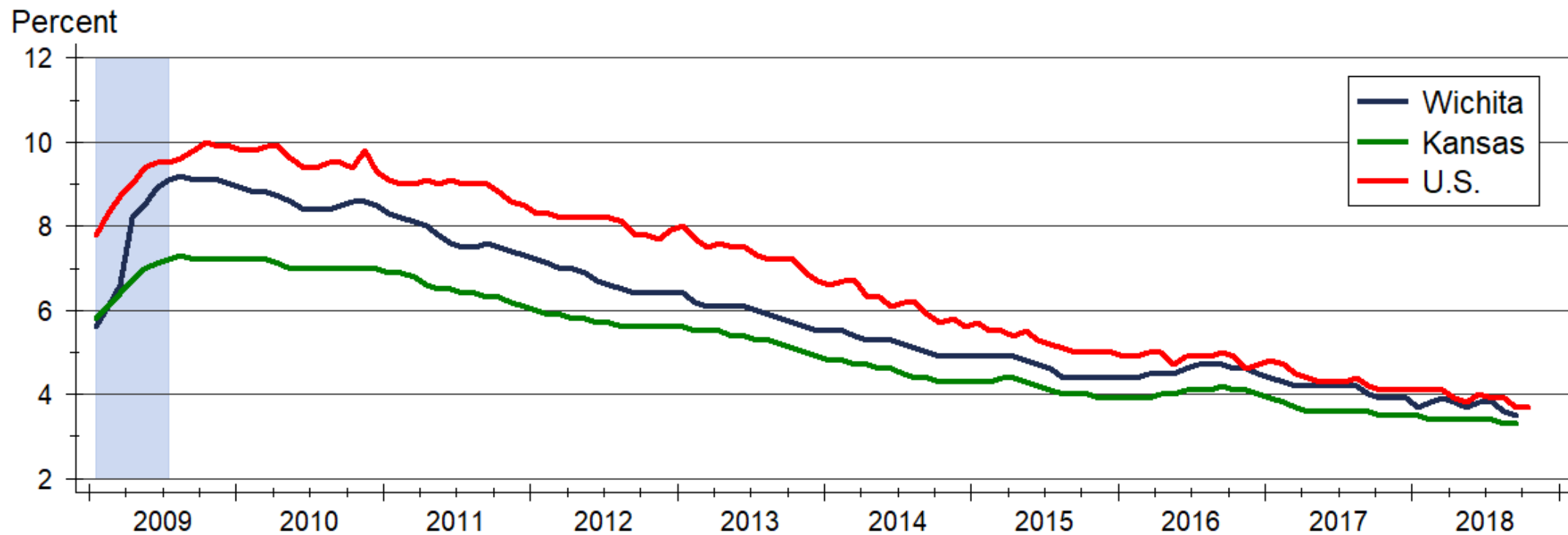
and participating
REALTOR® MLS systems
across Kansas



WICHITA STATE
UNIVERSITY
W. FRANK BARTON
SCHOOL OF BUSINESS



Wichita Unemployment Rate

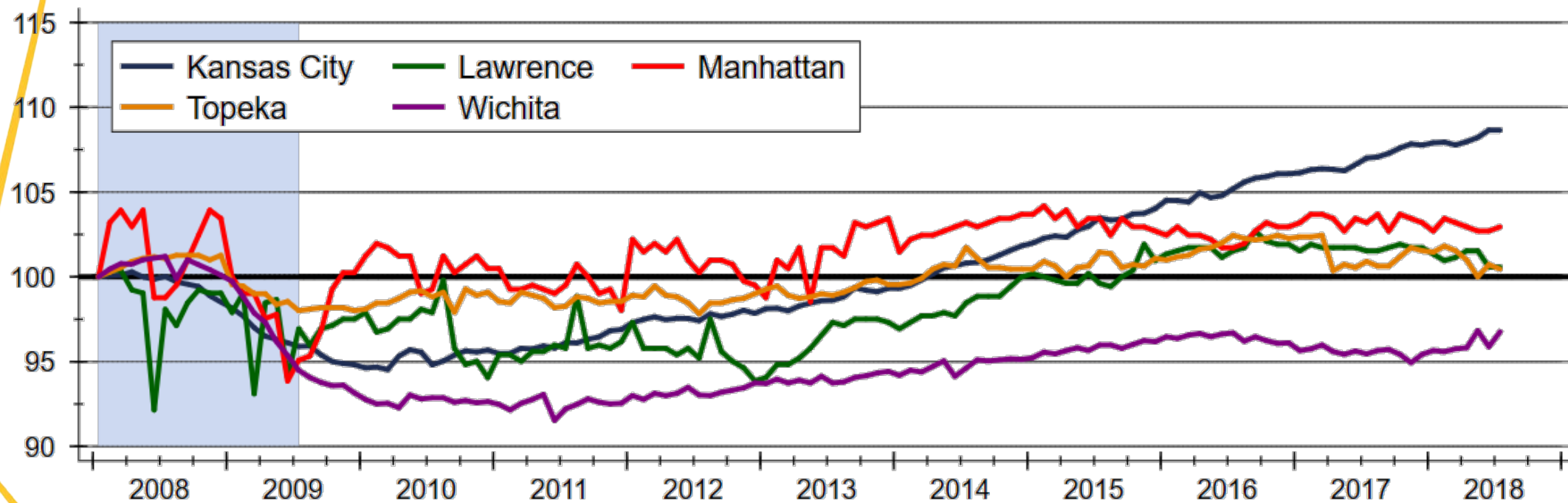


Source: U.S. Bureau of Labor Statistics

Data are seasonally adjusted

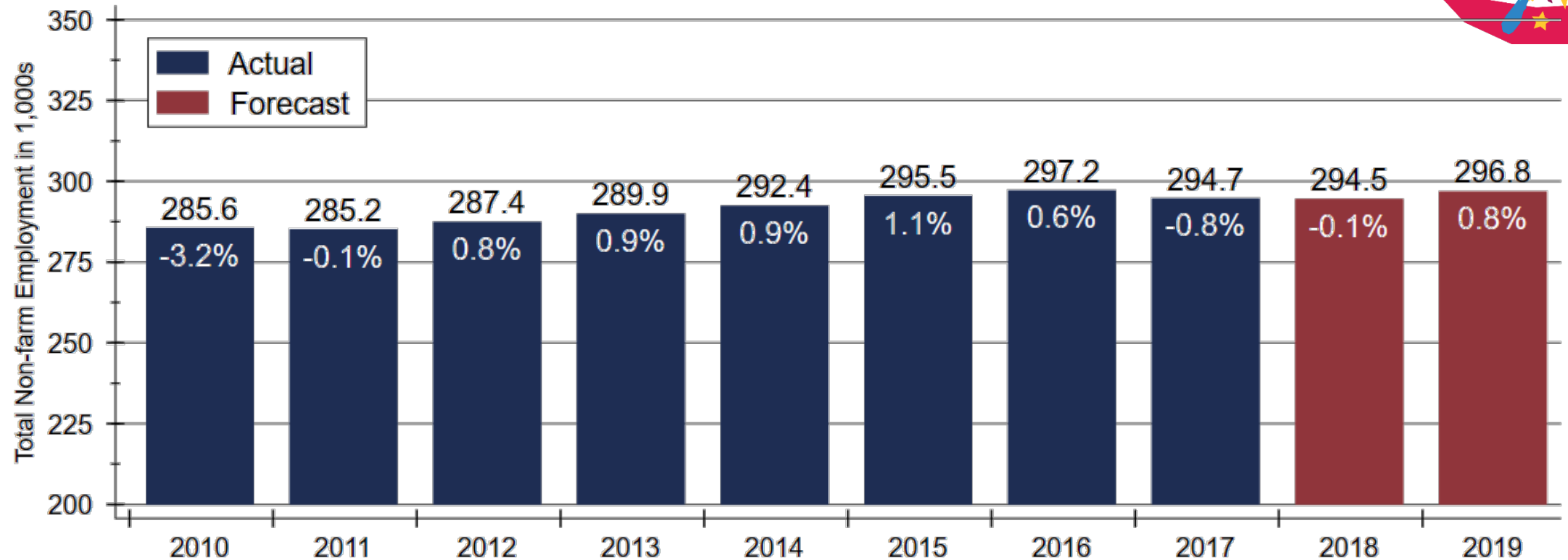
Total Employment across Kansas

Index: 2008m1 = 100



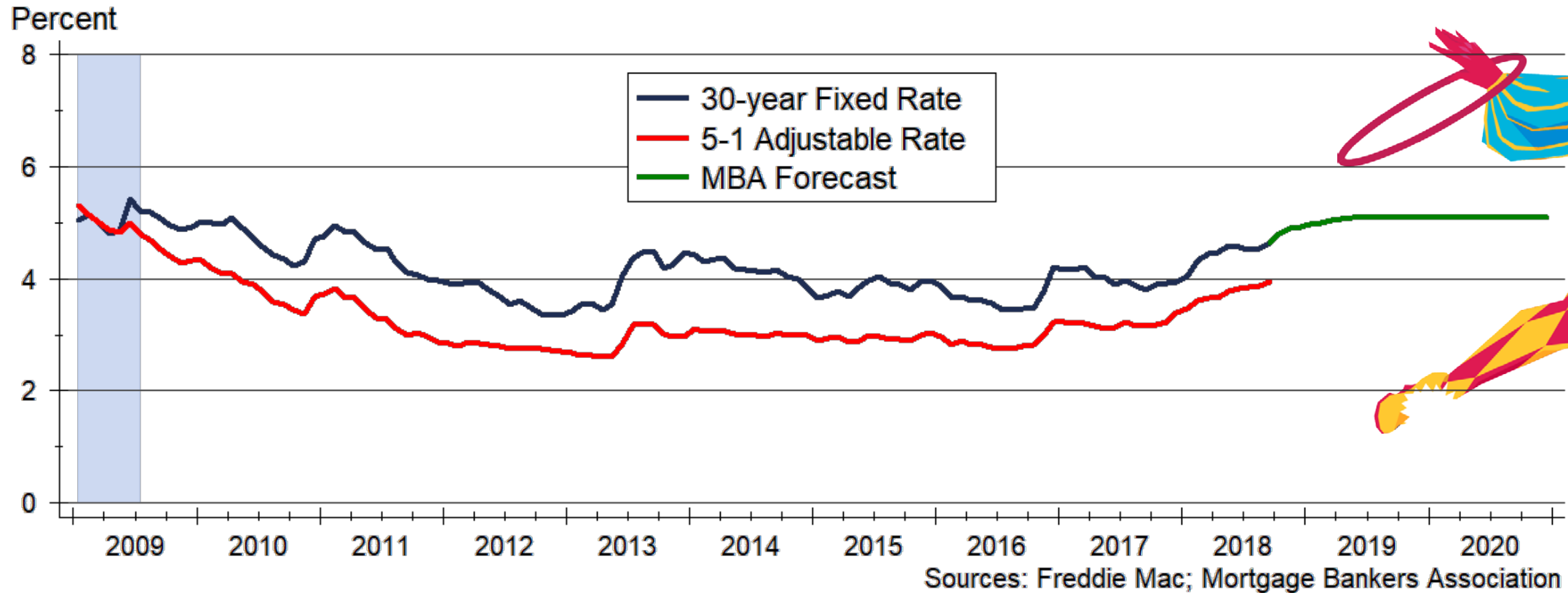
Source: U.S. Bureau of Labor Statistics
Indexes created from seasonally adjusted data

Wichita Employment Forecast



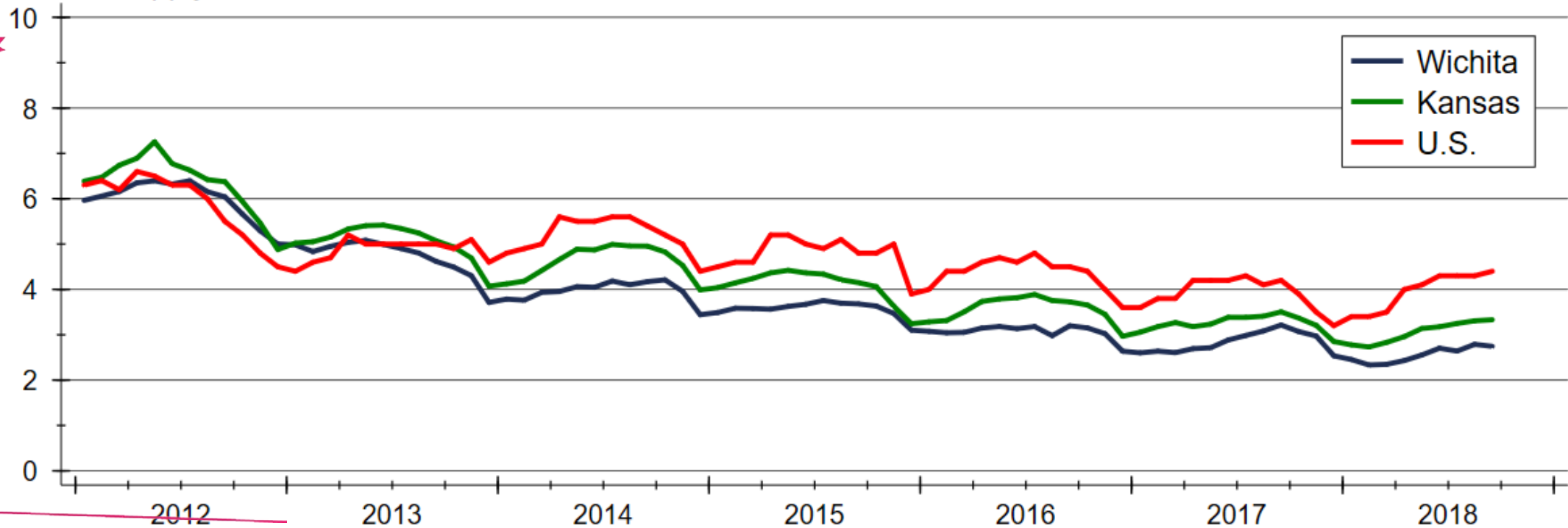
Sources: Kansas Department of Labor and WSU CEDBR

Mortgage Rates Forecast



Inventory of Homes for Sale

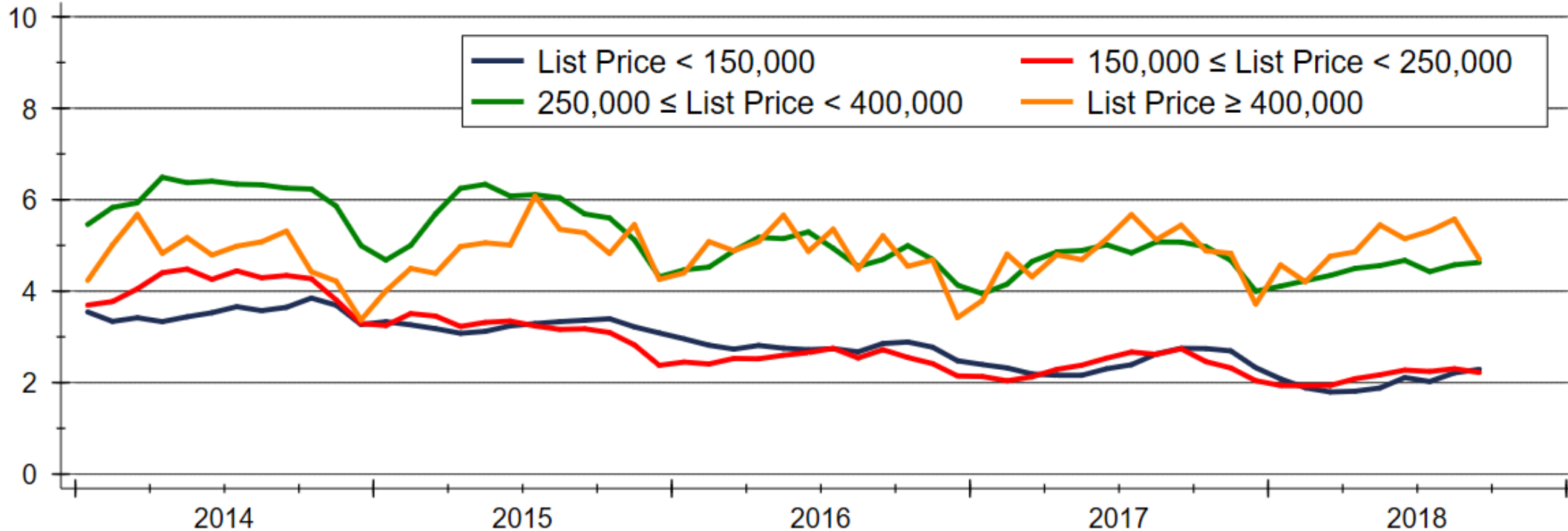
Months' Supply



Sources: NAR, KAR and South Central Kansas MLS

Home Inventories by Price Range

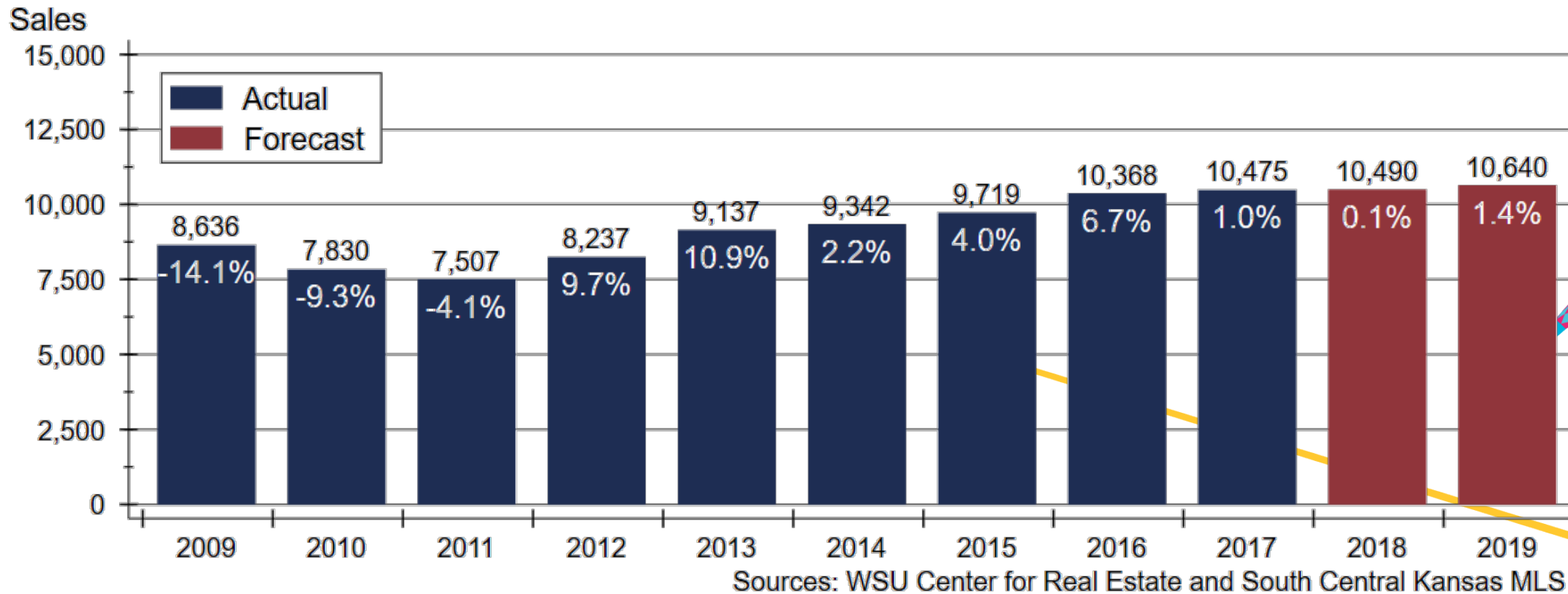
Months' Supply



Source: South Central Kansas MLS

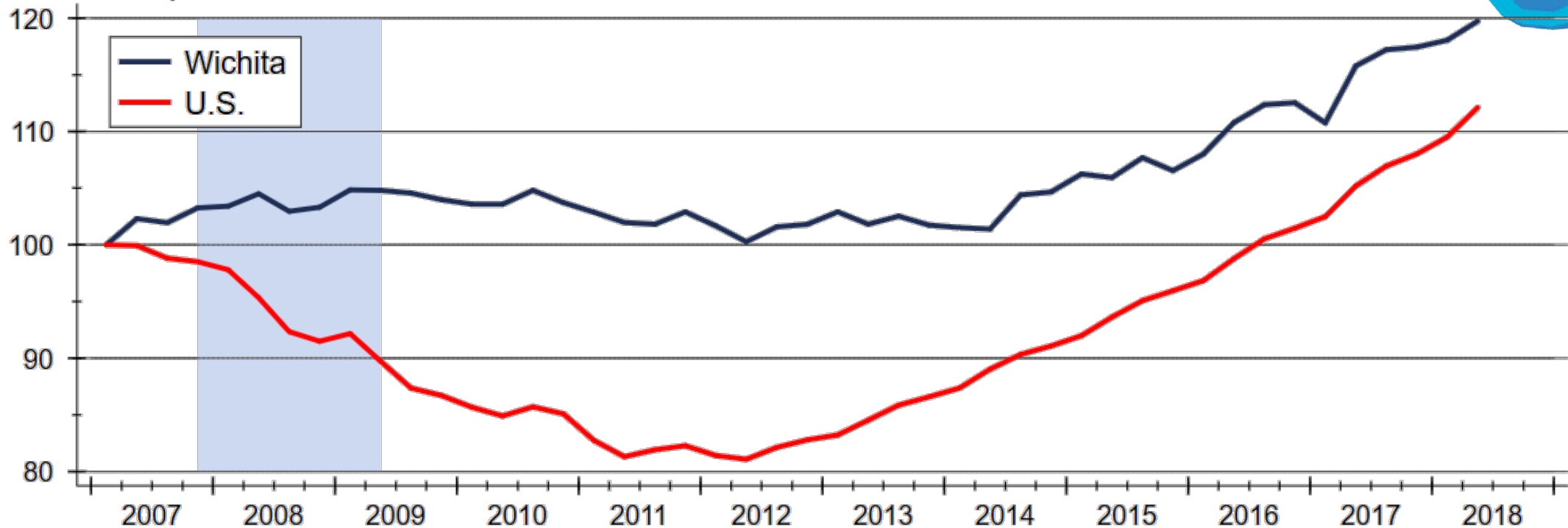


Wichita Home Sales Forecast



Home Price Appreciation since 2007

Index: 2007q1 = 100

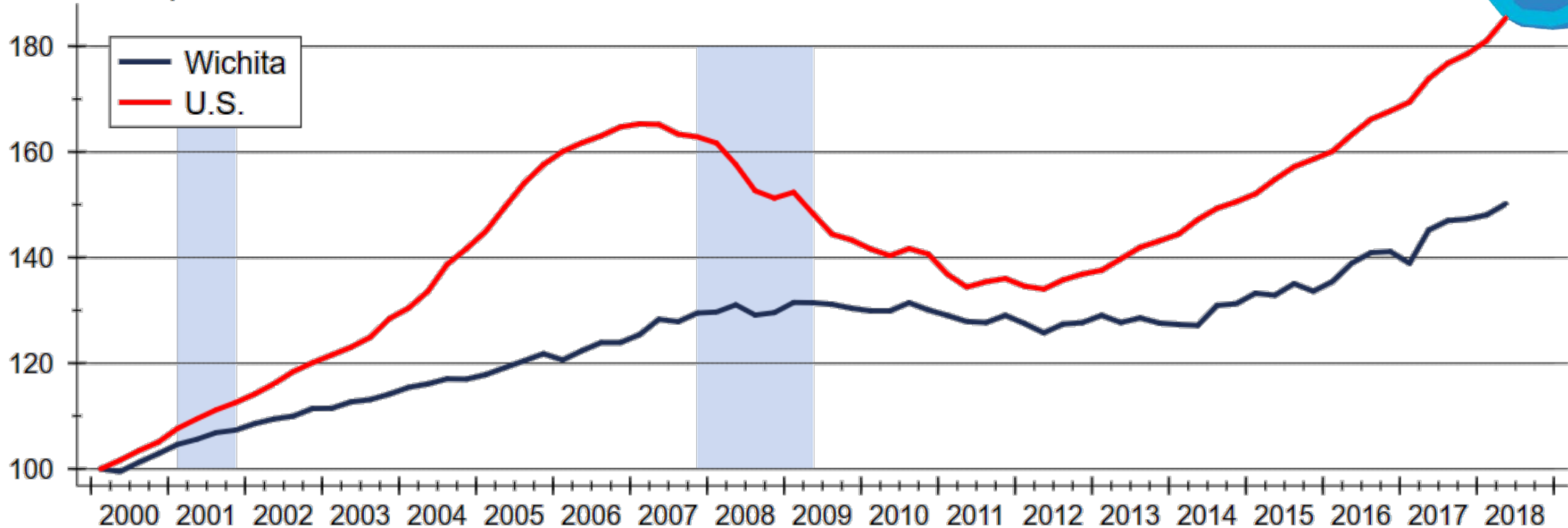


Source: Federal Housing Finance Agency (FHFA)



Home Price Appreciation since 2000

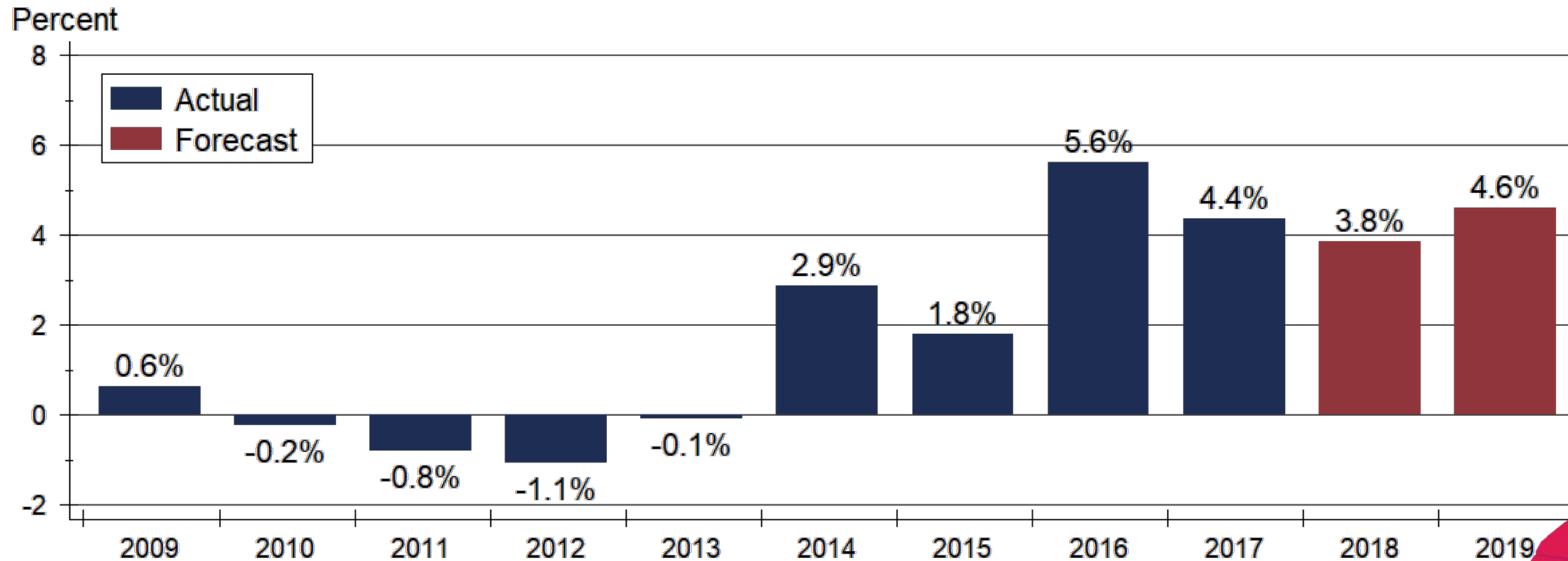
Index: 2000q1 = 100



Source: Federal Housing Finance Agency (FHFA)



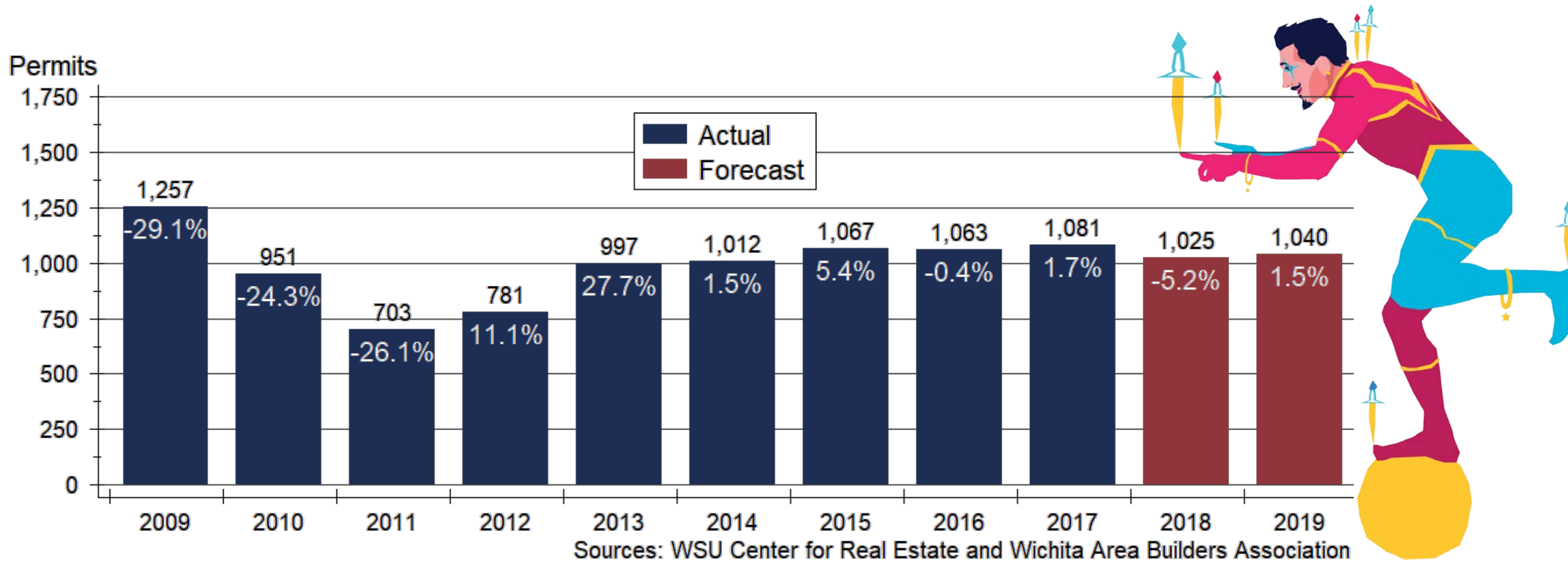
Home Price Appreciation Forecast




Sources: WSU Center for Real Estate and Federal Housing Finance Agency



Wichita Home Construction Forecast

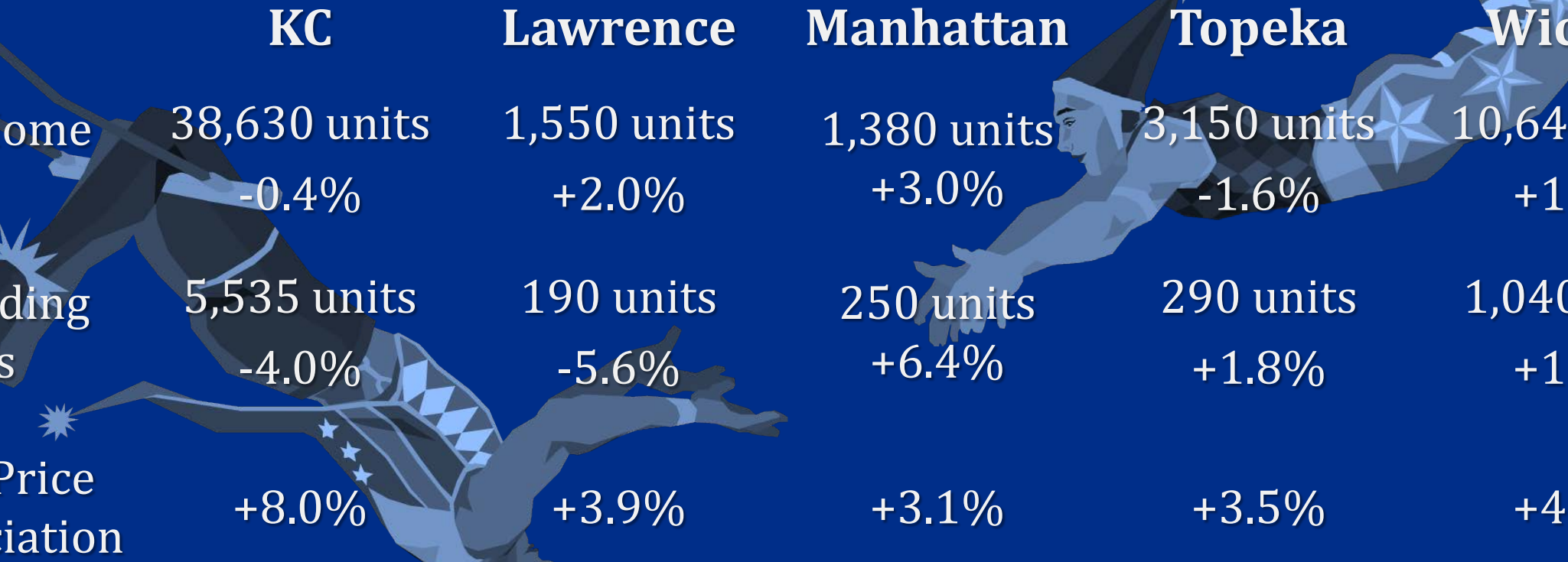


2019 Wichita Forecast



	2016 Actual	2017 Actual	2018 Forecast	2019 Forecast
Total Home Sales	1,444 units +4.4%	1,490 units +3.2%	1,520 units +2.0%	1,550 +2.0%
SF Building Permits	264 units +19.5%	206 units -22.0%	180 units -12.6%	190 units +5.6%
Home Price Appreciation	+7.2%	+4.2%	+4.8	+3.9

2019 Major Market Forecasts



	KC	Lawrence	Manhattan	Topeka	Wichita
Total Home Sales	38,630 units -0.4%	1,550 units +2.0%	1,380 units +3.0%	3,150 units -1.6%	10,640 units +1.4%
SF Building Permits	5,535 units -4.0%	190 units -5.6%	250 units +6.4%	290 units +1.8%	1,040 units +1.5%
Home Price Appreciation	+8.0%	+3.9%	+3.1%	+3.5%	+4.6%

Sources: Heartland MLS; Lawrence Board of REALTORS®; Flint Hills Association of REALTORS®; Sunflower Association of REALTORS®; South Central Kansas MLS; U.S. Bureau of the Census; Federal Housing Finance Agency; WSU Center for Real Estate

2019 Forecast Sponsors



Security 1st Title



CREDIT UNIONSM



WSU Center for Real Estate

Laying a Foundation for Real Estate in Kansas

www.wichita.edu/realestate



WICHITA STATE
UNIVERSITY
W. FRANK BARTON
SCHOOL OF BUSINESS

