

2018 Manhattan Housing Forecast

Flint Hills Regional Leaders Retreat
January 20, 2018

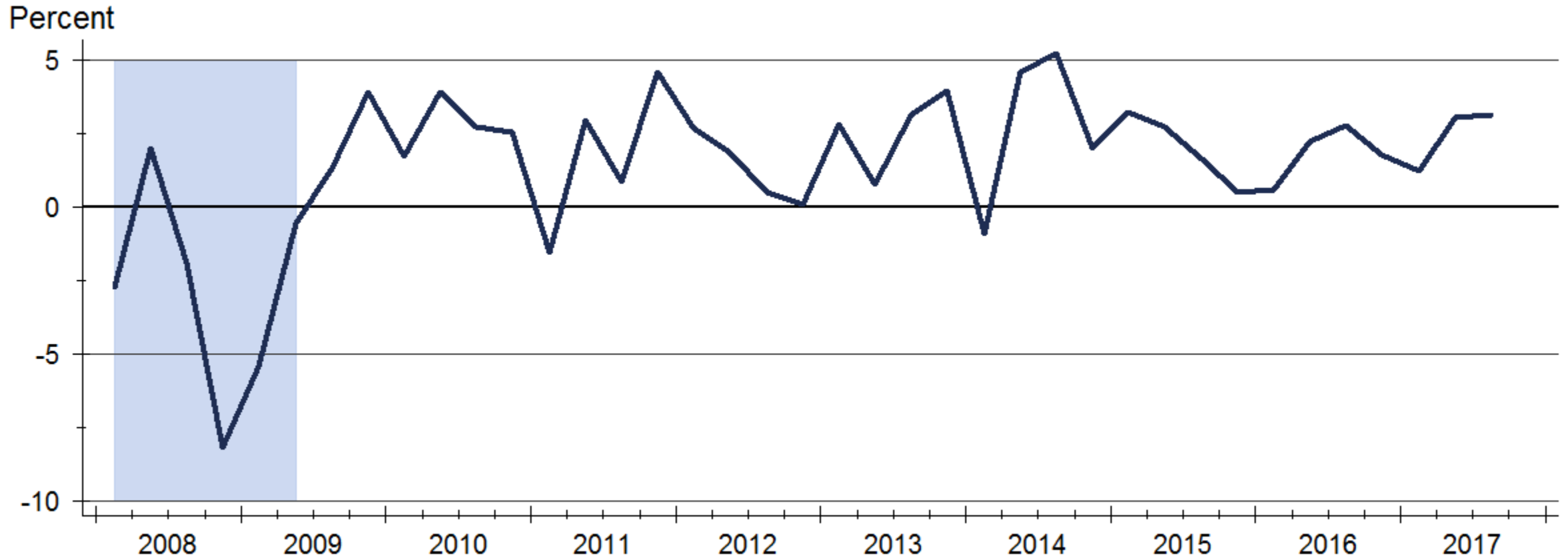
Dr. Stanley D. Longhofer
WSU Center for Real Estate



WICHITA STATE
UNIVERSITY
W. FRANK BARTON
SCHOOL OF BUSINESS

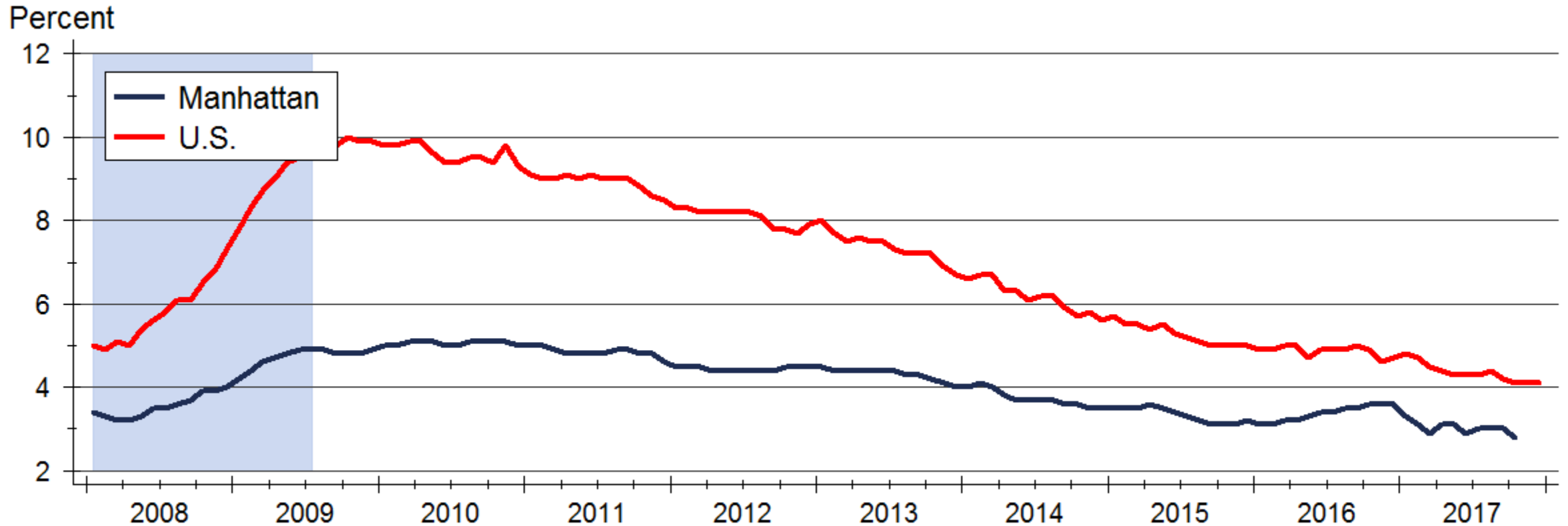


Real GDP Growth



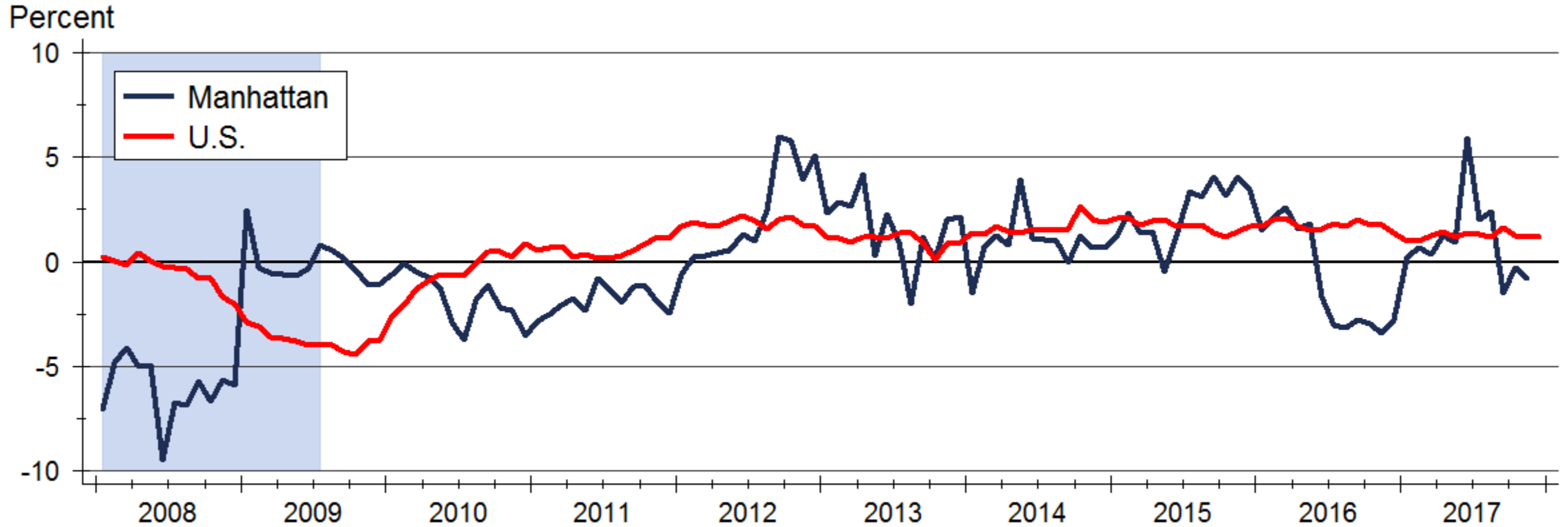
Source: Bureau of Economic Analysis

Manhattan MSA Unemployment Rate



Source: U.S. Bureau of Labor Statistics
Data are seasonally adjusted

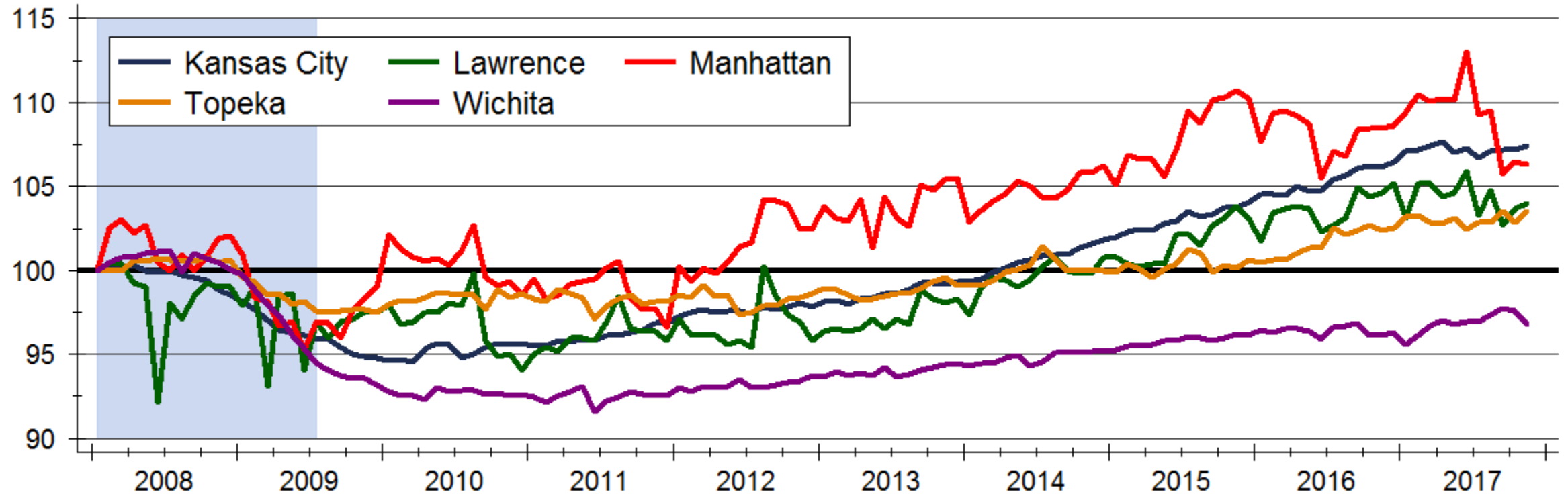
Non-Farm Employment Growth



Source: U.S. Bureau of Labor Statistics
Data are seasonally adjusted

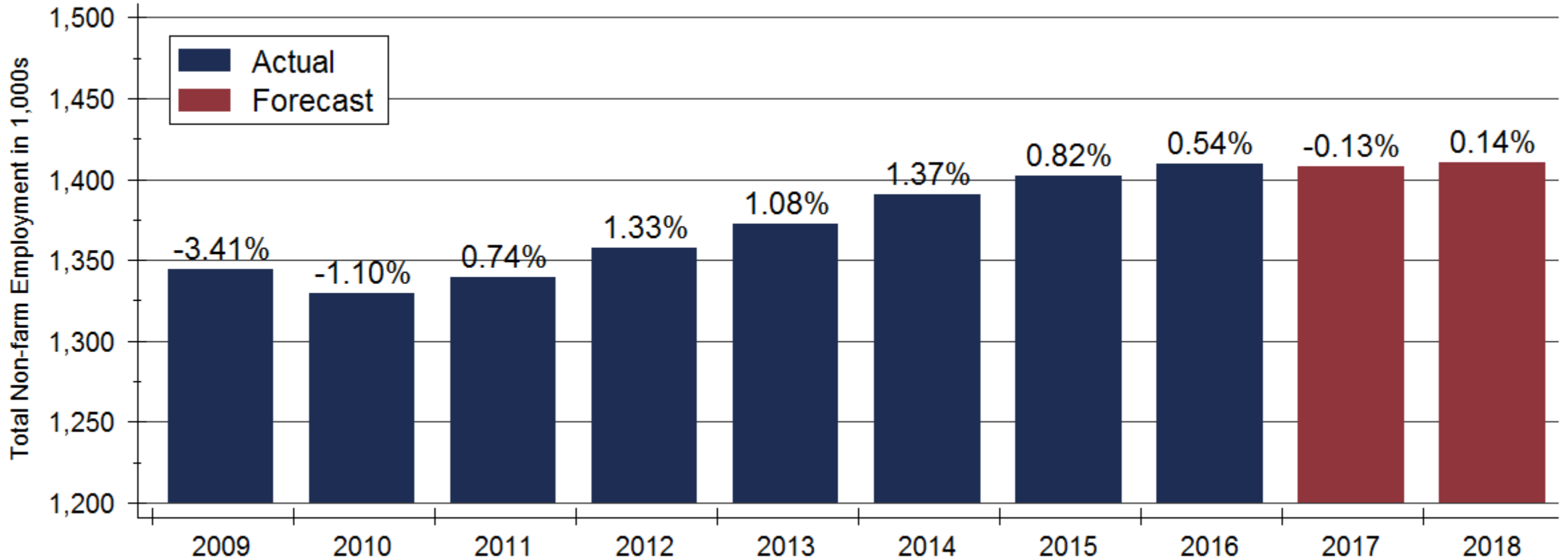
Non-Farm Employment Growth

Index: 2008m1 = 100



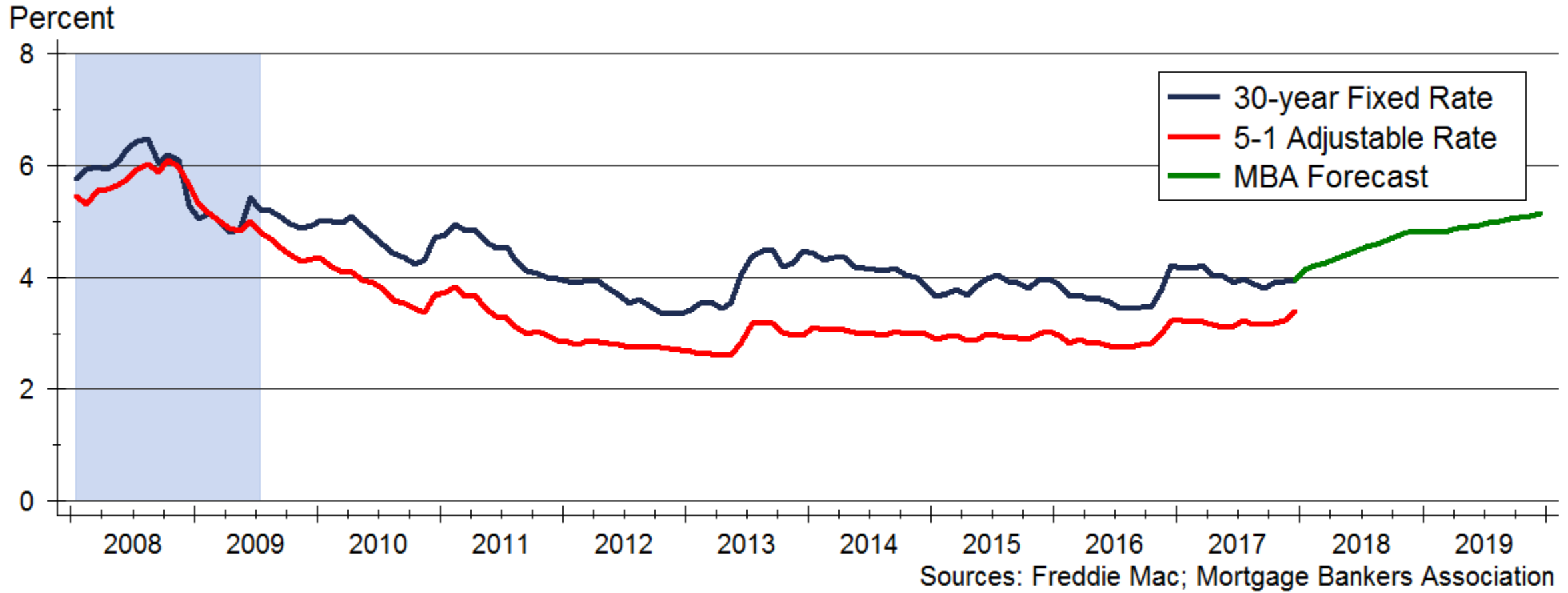
Source: U.S. Bureau of Labor Statistics
Indexes created from seasonally adjusted data

Kansas Employment Forecast

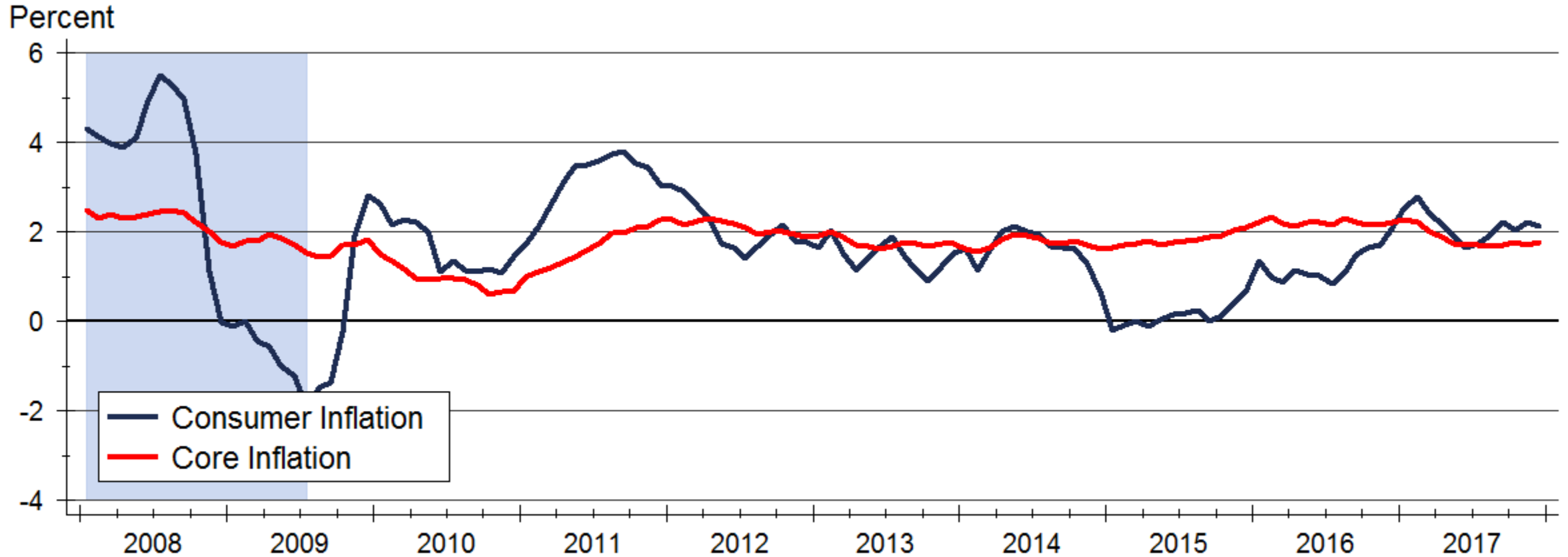


Sources: Kansas Department of Labor and WSU CEDBR

Monthly Mortgage Rates

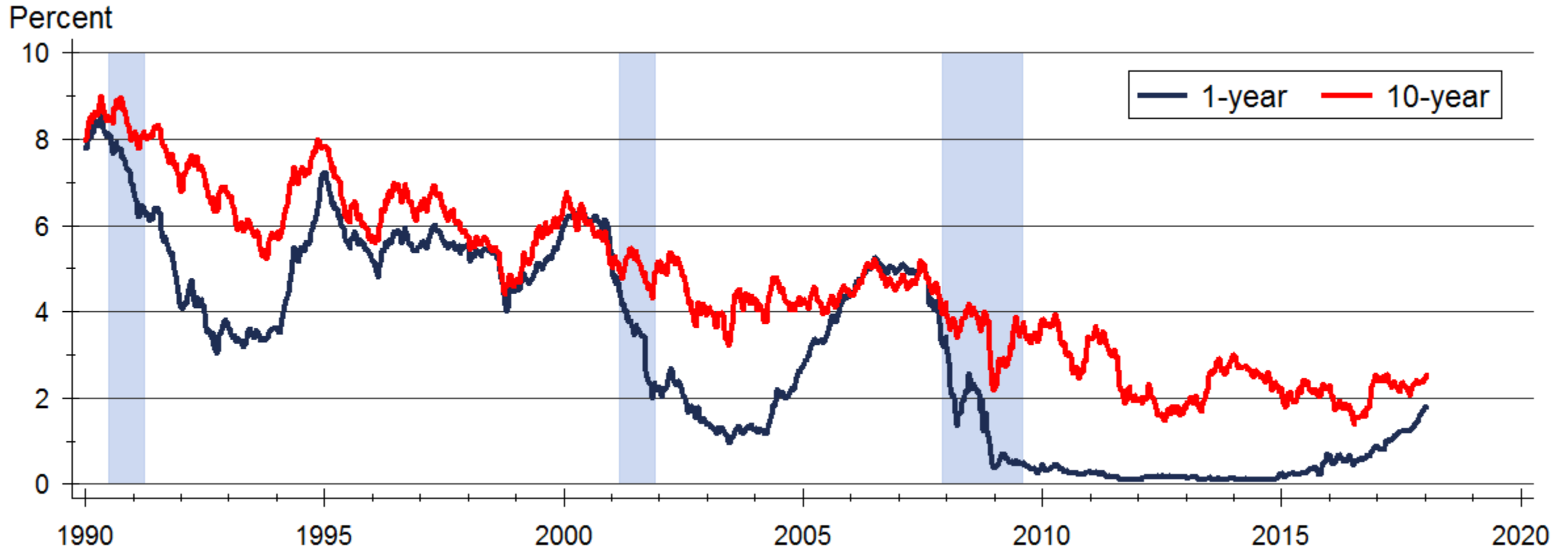


Consumer Inflation



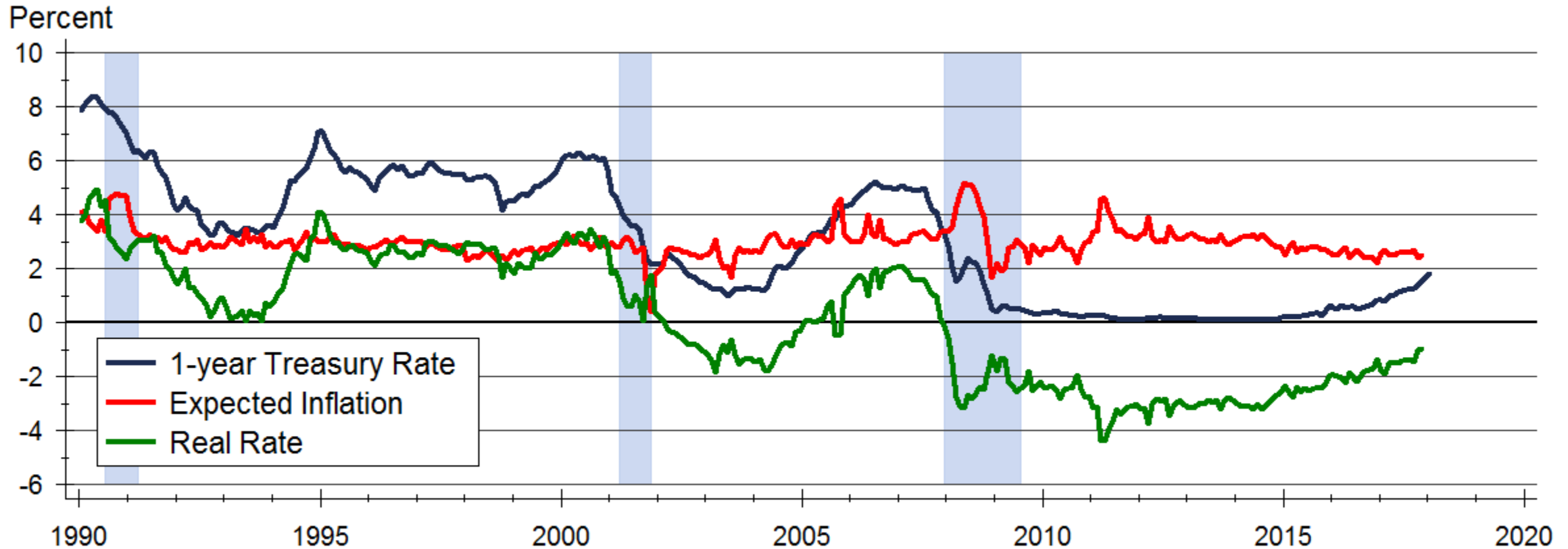
Source: U.S. Bureau of Labor Statistics

U.S. Treasury Rates



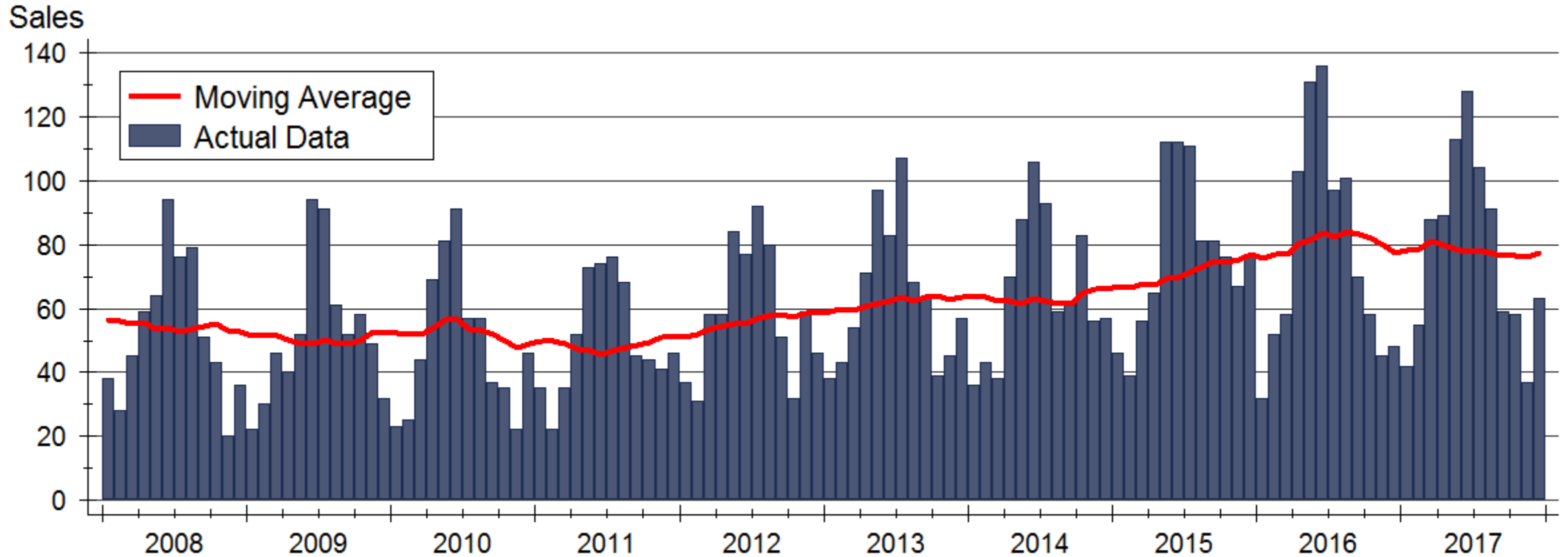
Source: Board of Governors of the Federal Reserve System

Real Short-Term Interest Rates



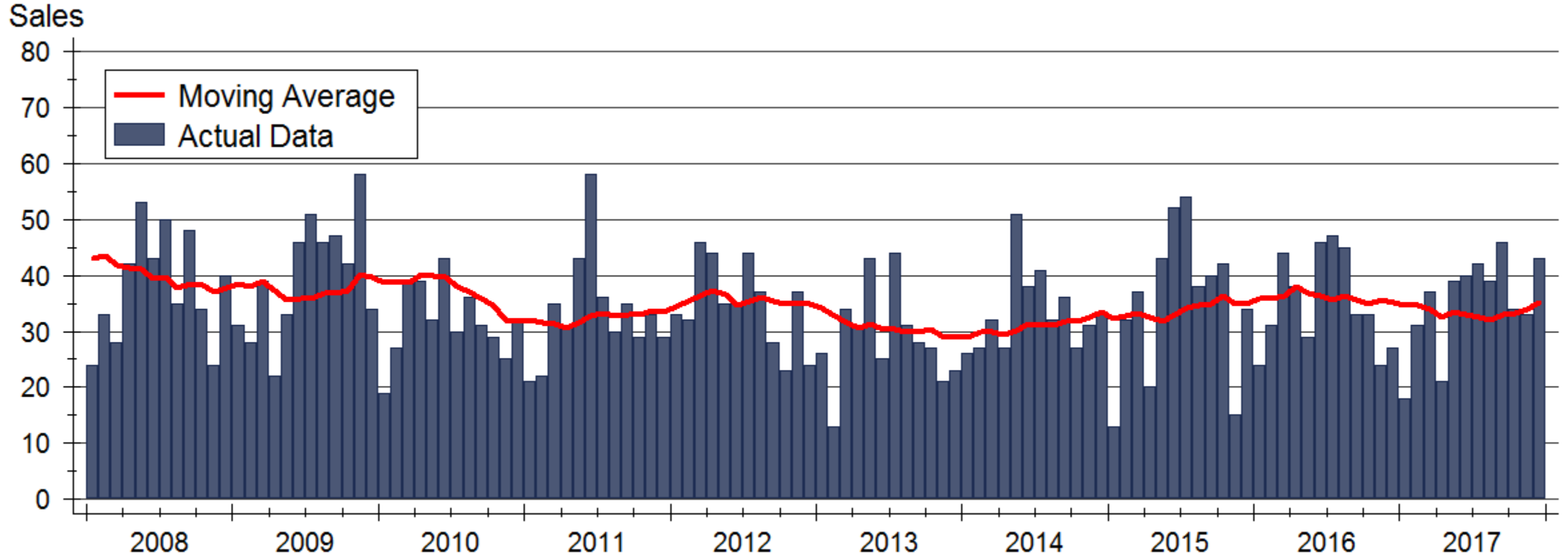
Sources: Board of Governors of the Federal Reserve System and University of Michigan

Manhattan Area Home Sales Activity



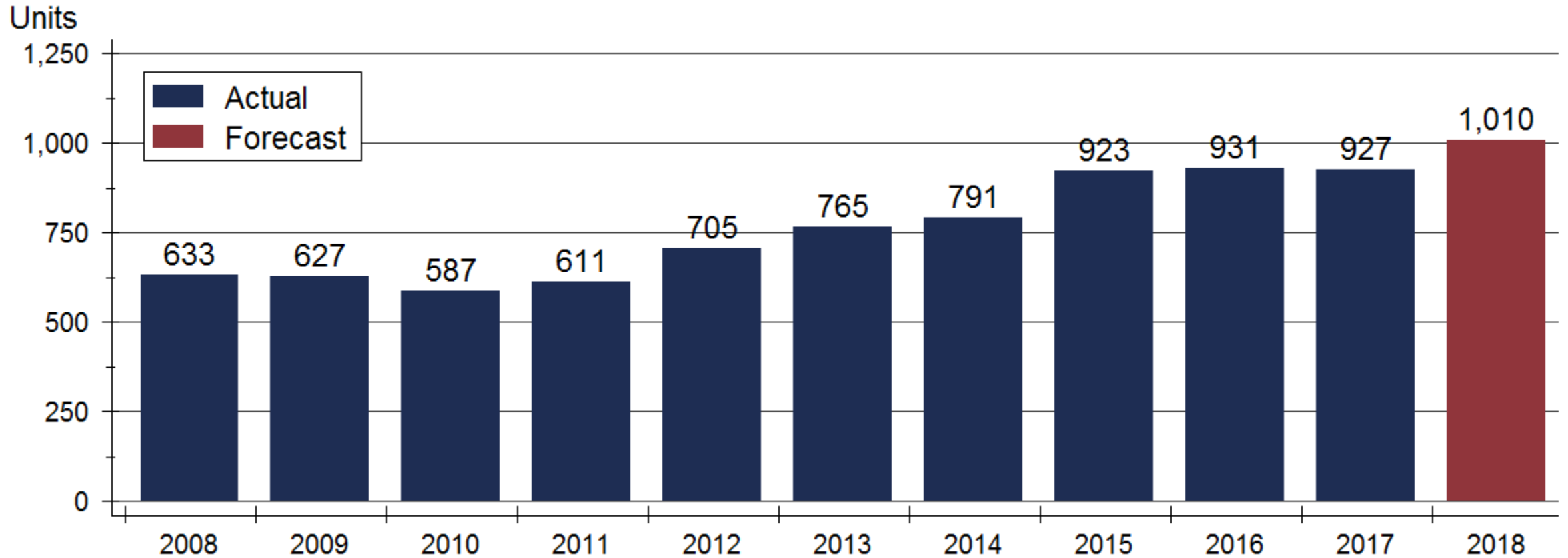
Source: Manhattan Association of REALTORS®

Geary County Home Sales Activity



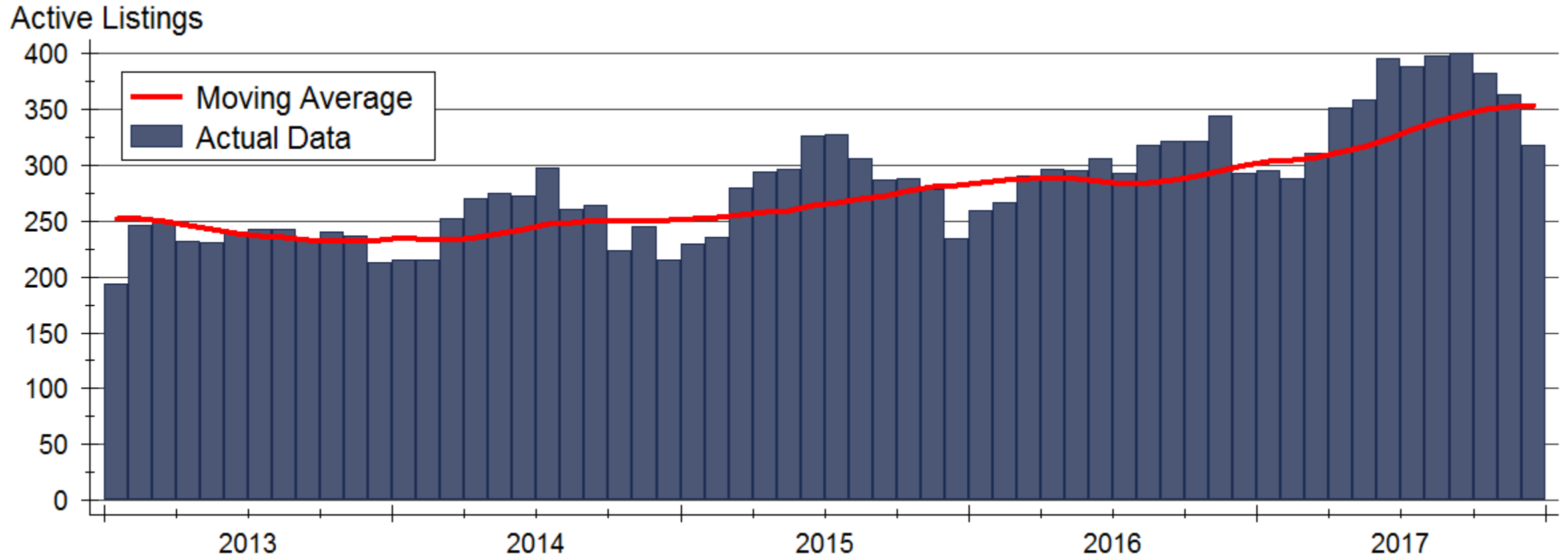
Source: Tall Grass Association of REALTORS®

Manhattan Area Home Sales Forecast



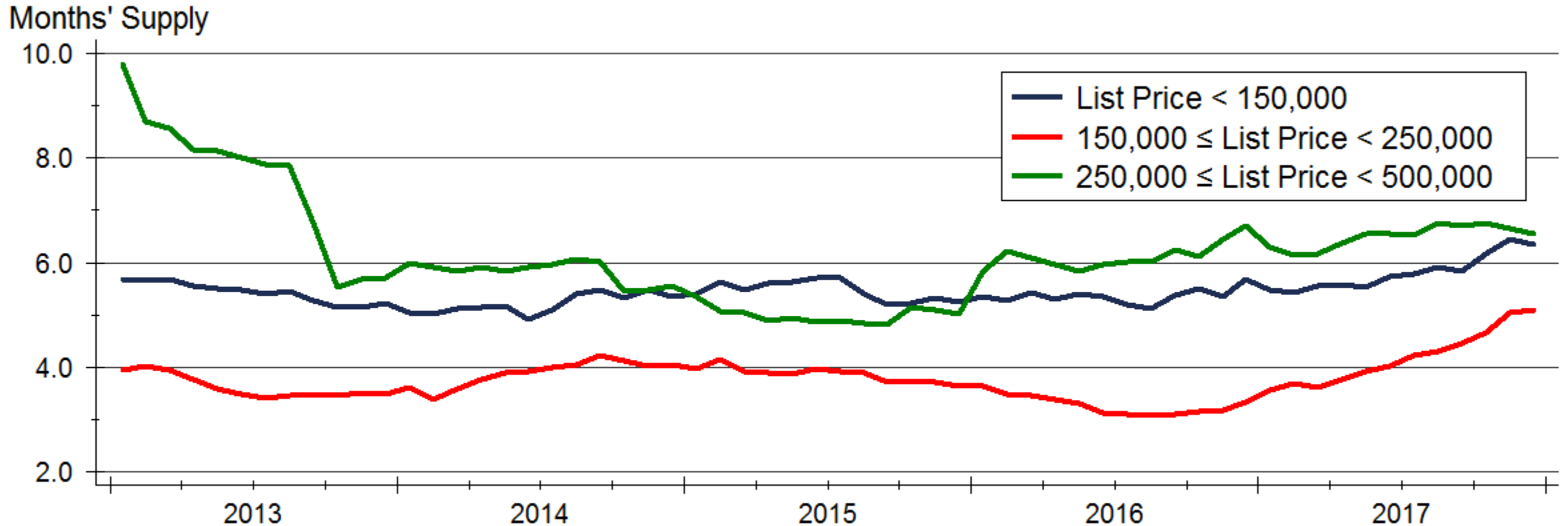
Sources: Manhattan Association of REALTORS® and WSU Center for Real Estate

Home Inventories by Price Range



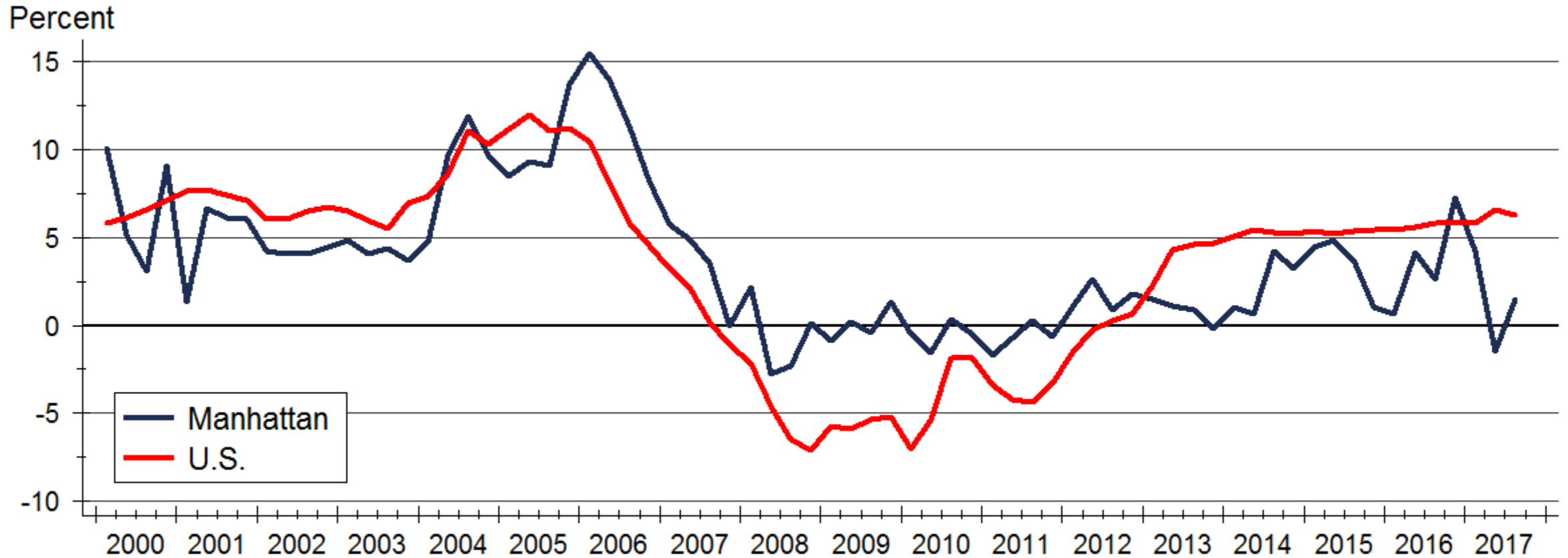
Source: Manhattan Association of REALTORS®

Manhattan Inventories by Price Range



Source: Manhattan Association of REALTORS®
Data are 12-month lagging moving averages

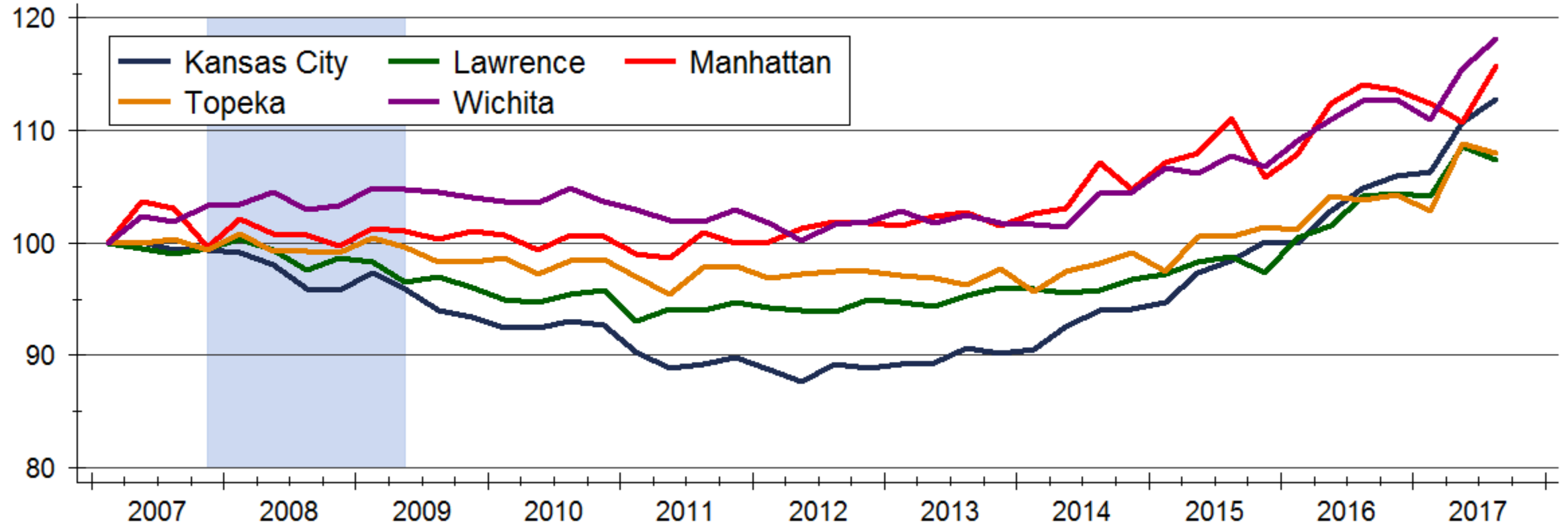
Home Price Appreciation



Source: Federal Housing Finance Agency (FHFA)

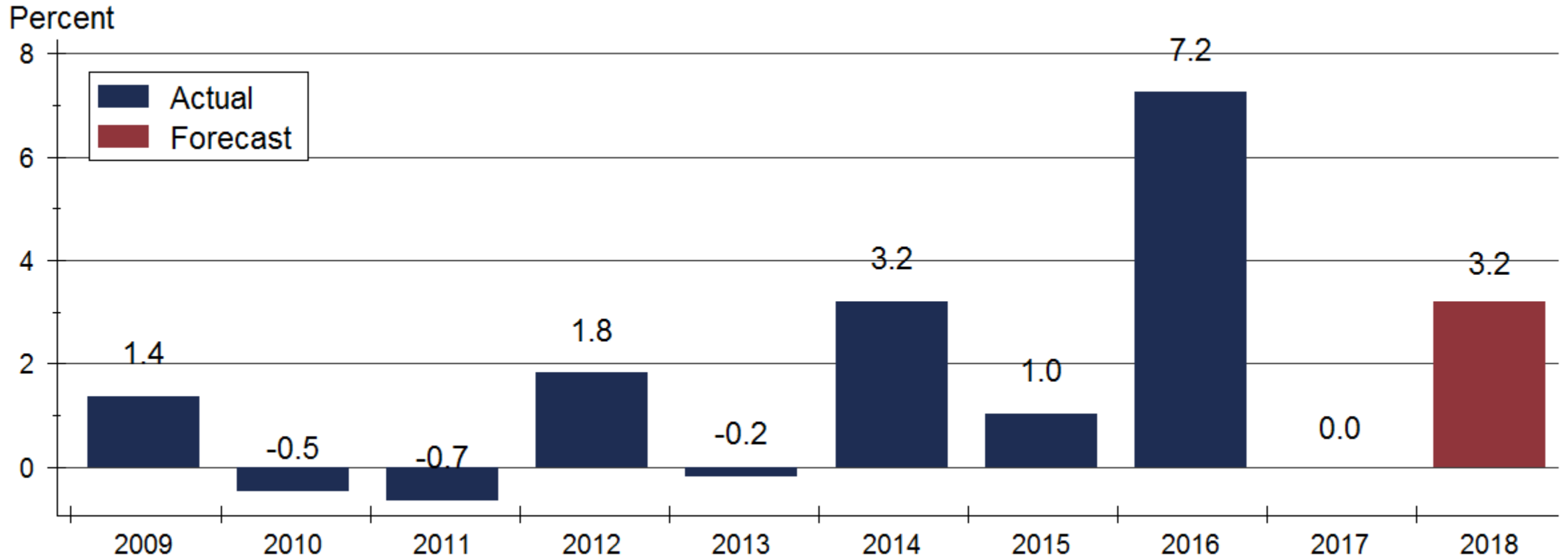
Home Price Growth across Kansas

Index: 2007q1 = 100



Source: Federal Housing Finance Agency (FHFA)

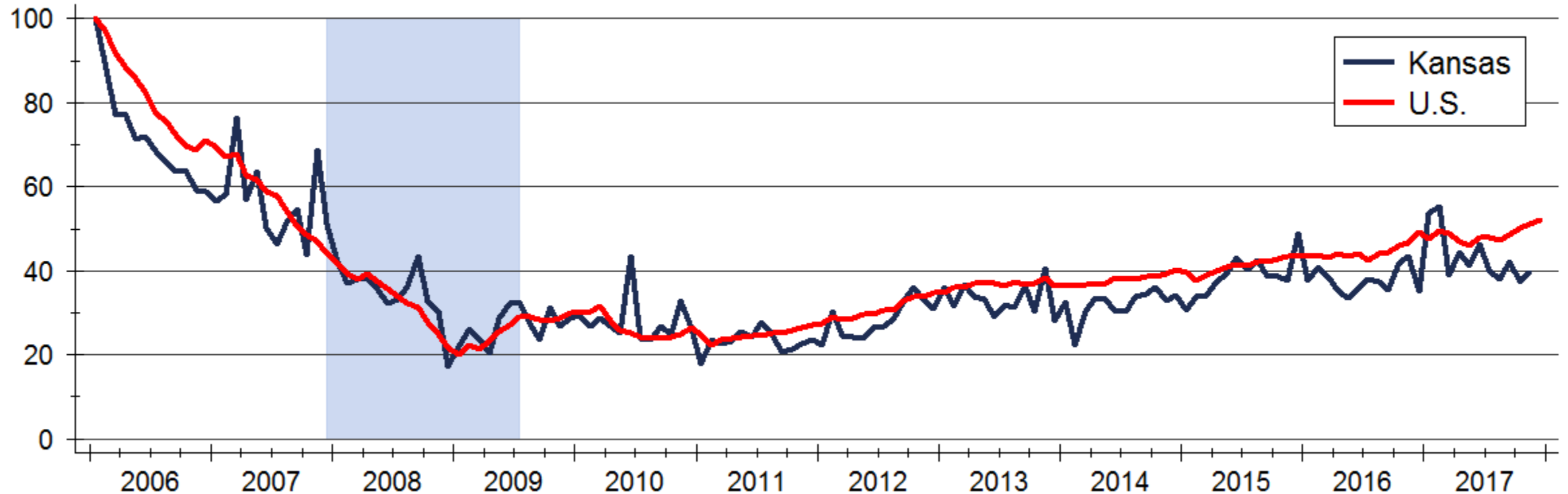
Manhattan Home Price Appreciation Forecast



Sources: Federal Housing Finance Agency and WSU Center for Real Estate

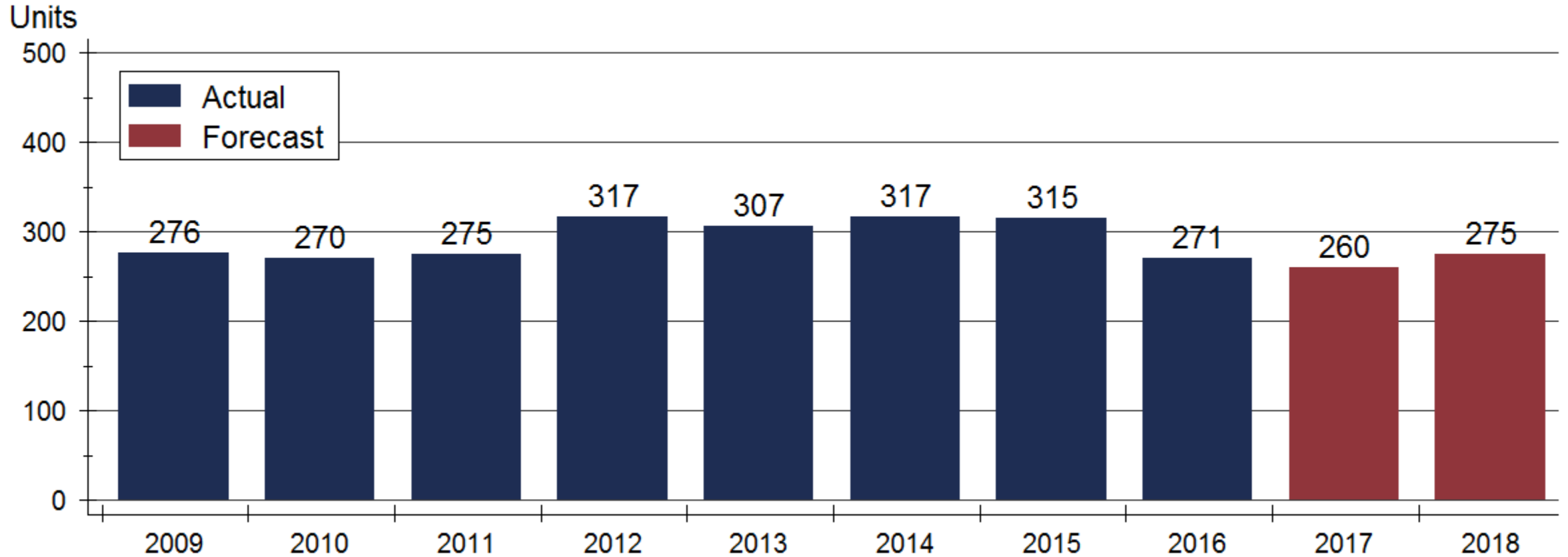
Single-Family Permitting Activity

Index: 2006m1 = 100



Source: U.S. Bureau of the Census
Data are seasonally adjusted annual rates

Manhattan MSA SF Permit Forecast



Sources: U.S. Census Bureau and WSU Center for Real Estate

WSU Center for Real Estate

Laying a Foundation for Real Estate in Kansas

www.wichita.edu/realestate



WICHITA STATE
UNIVERSITY
W. FRANK BARTON
SCHOOL OF BUSINESS

