

A black and white photograph of sunflowers serves as the background. A large, stylized arrow graphic is overlaid on the right side, pointing to the right. The arrow is composed of three horizontal bands: a top blue band, a middle green band, and a bottom blue band. The green band contains the text.

Kansas

HOUSING
FORECAST

A NEW PERSPECTIVE

Thanks to the sponsors of this year's Kansas Housing Forecast...



Security 1st Title



CREDIT UNION
of America

Welcome to 80 Years of Friendly



WICHITA STATE
UNIVERSITY
W. FRANK BARTON
SCHOOL OF BUSINESS



Thanks also to the following REALTOR® boards and MLS systems:



South Central Kansas MLS



LAWRENCE
Board of REALTORS®

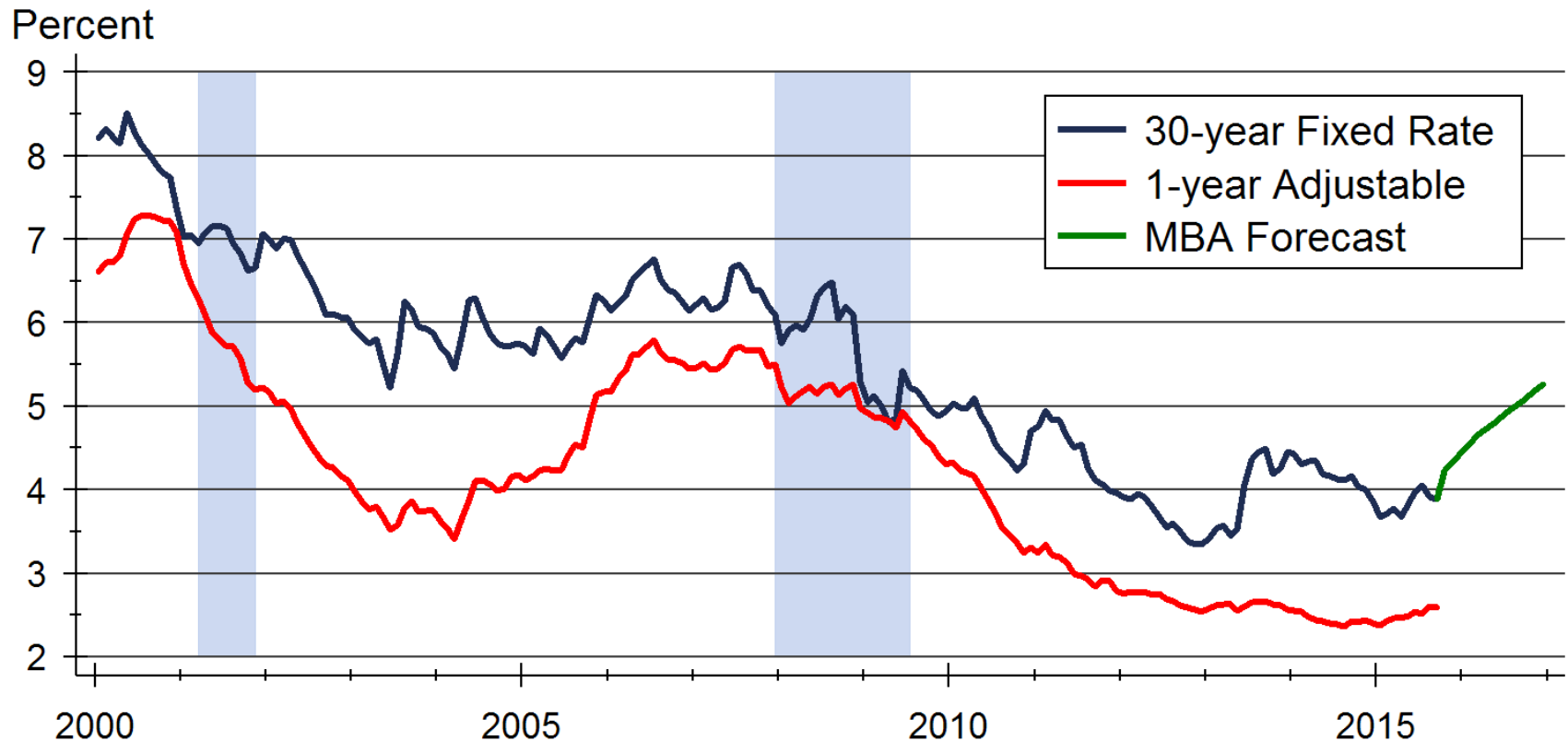


HEARTLAND MLS

and participating
REALTOR® MLS systems
across Kansas

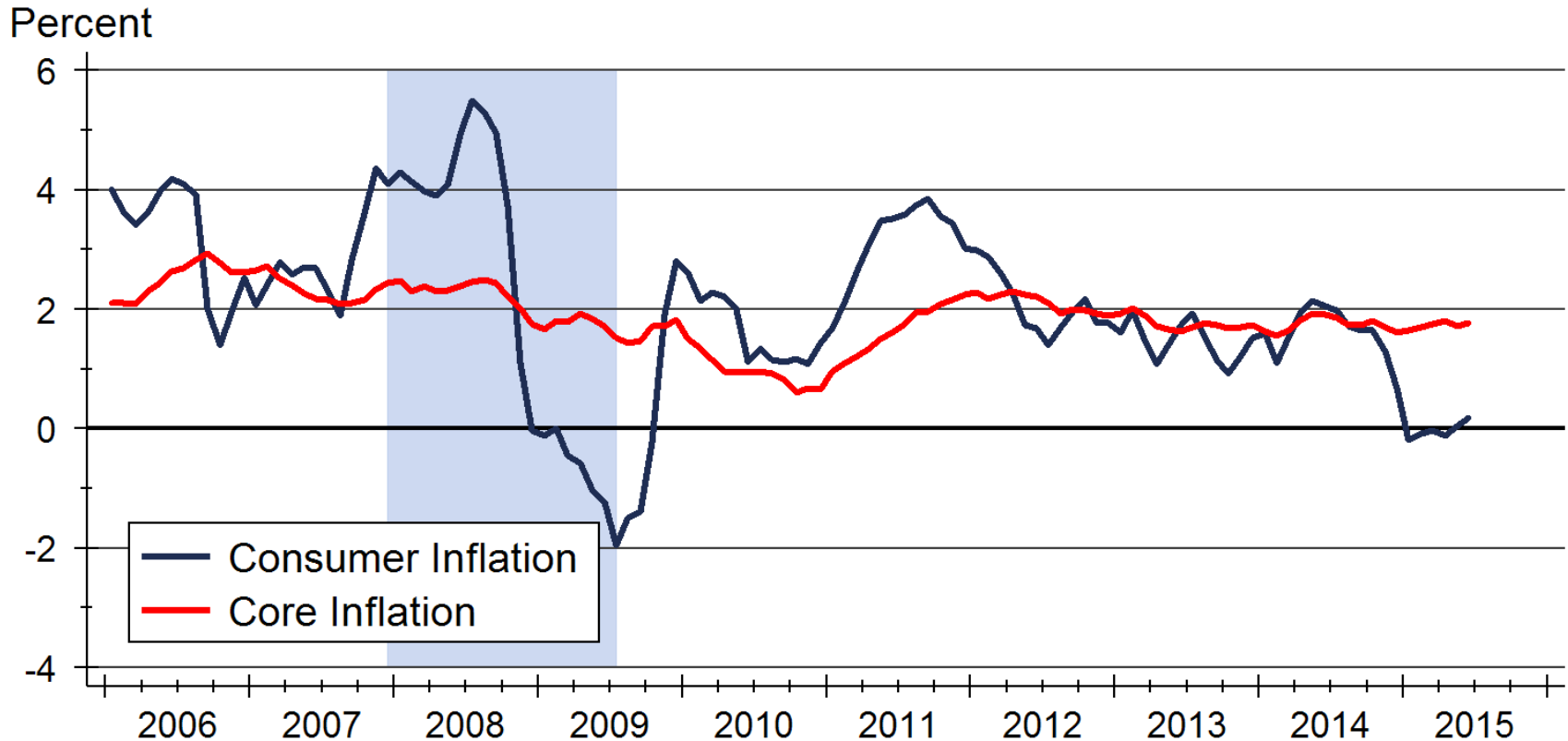


Mortgage Rate Forecast



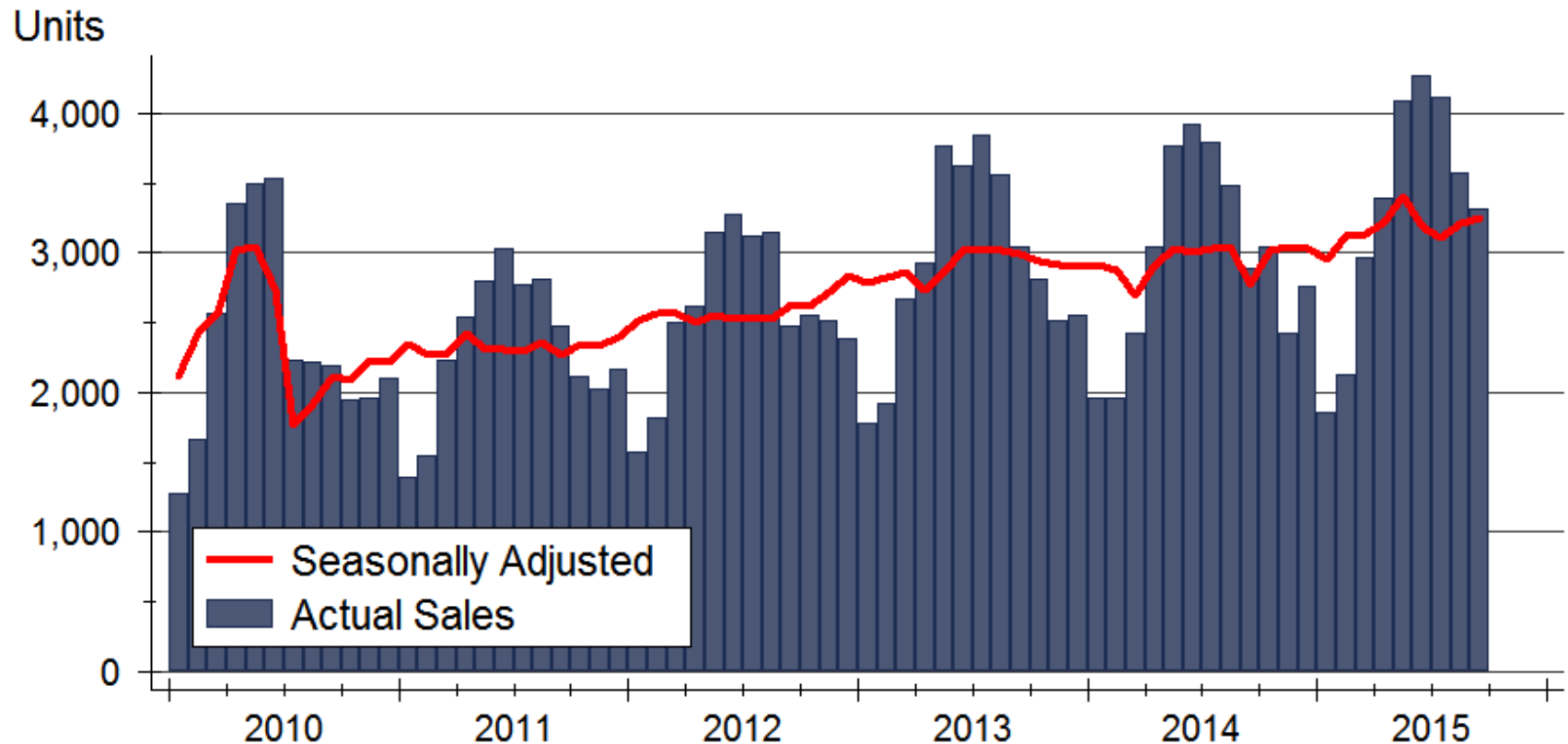
Sources: Freddie Mac; Mortgage Bankers Association

Consumer Inflation

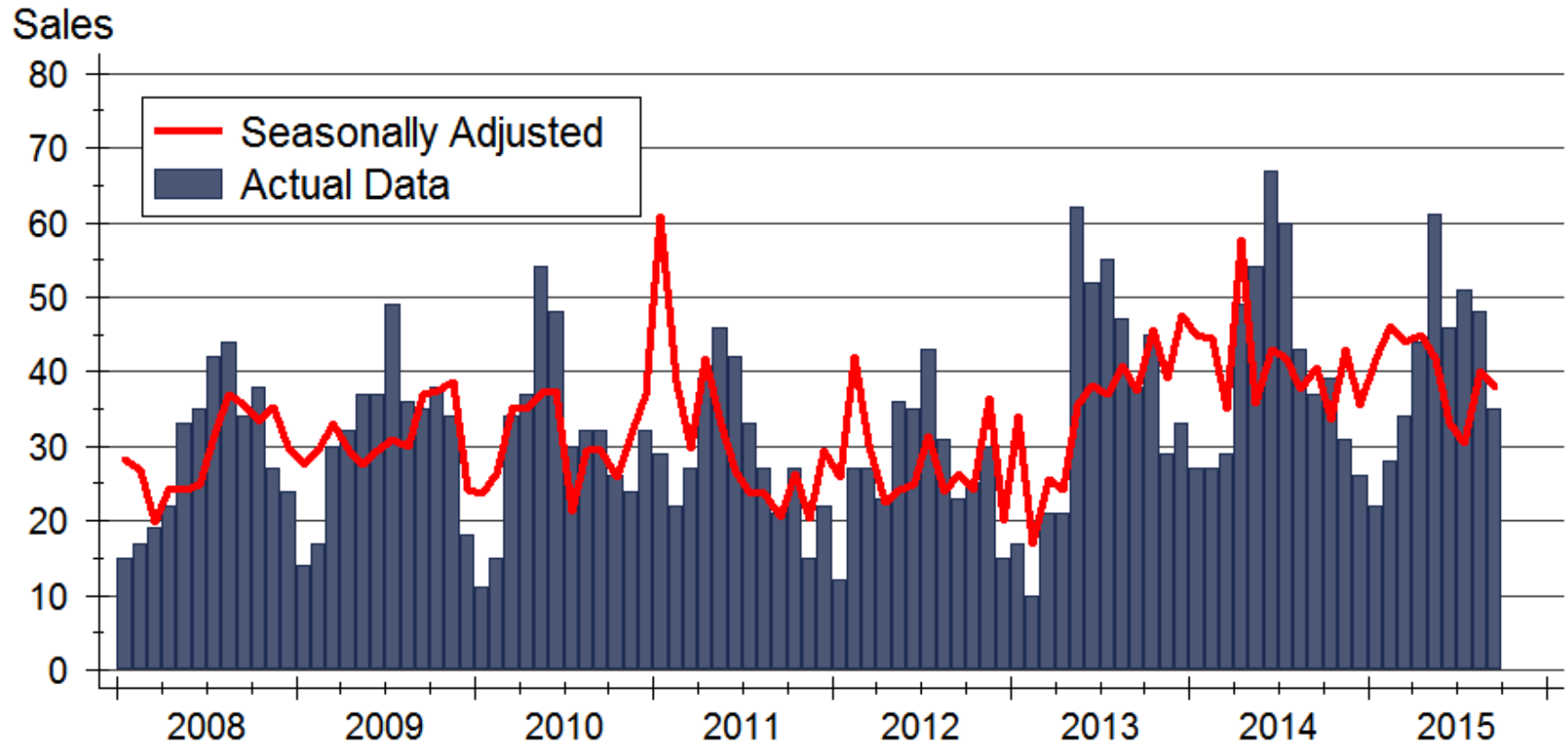


Source: U.S. Bureau of Labor Statistics

Kansas Home Sales Activity

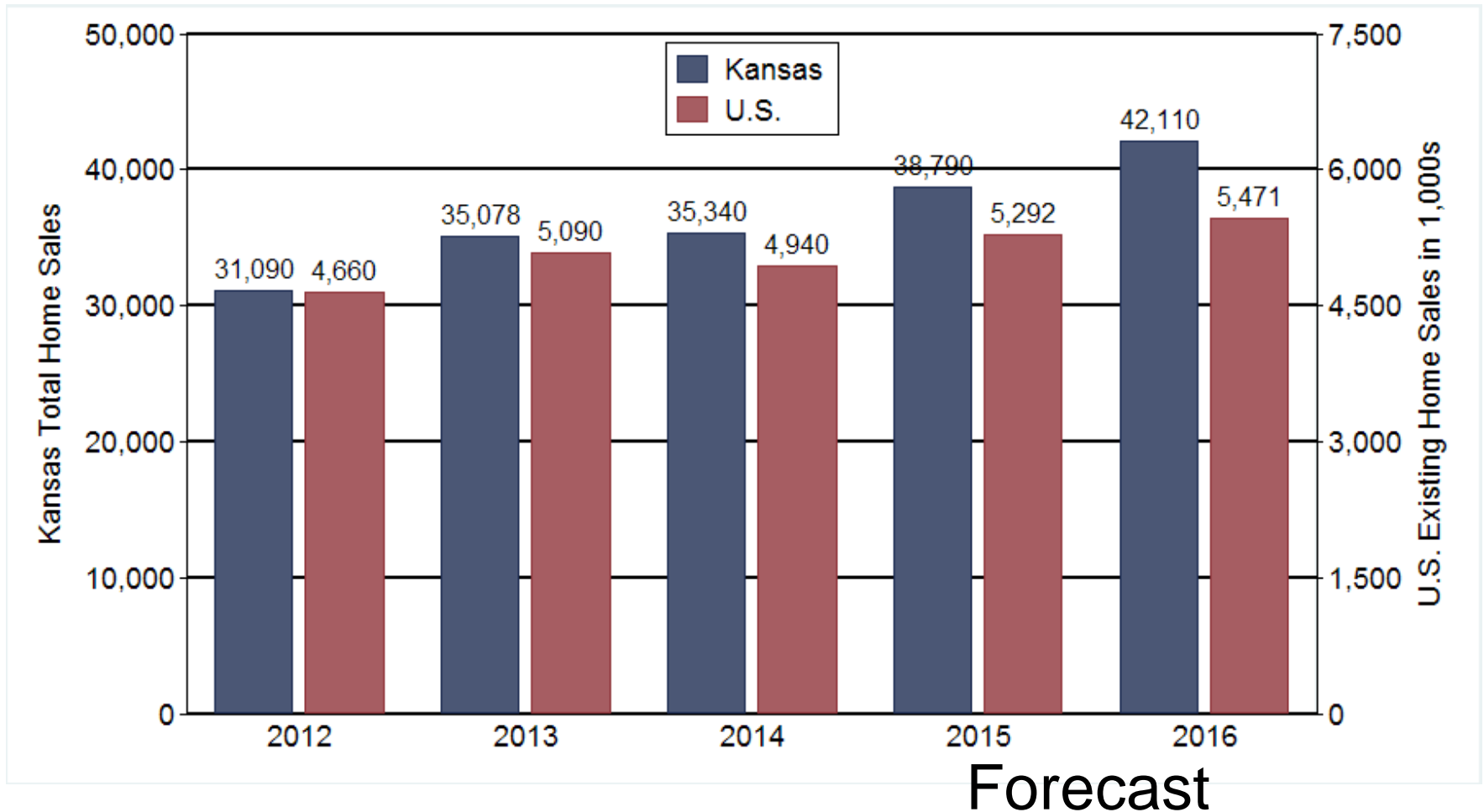


Emporia Home Sales Activity



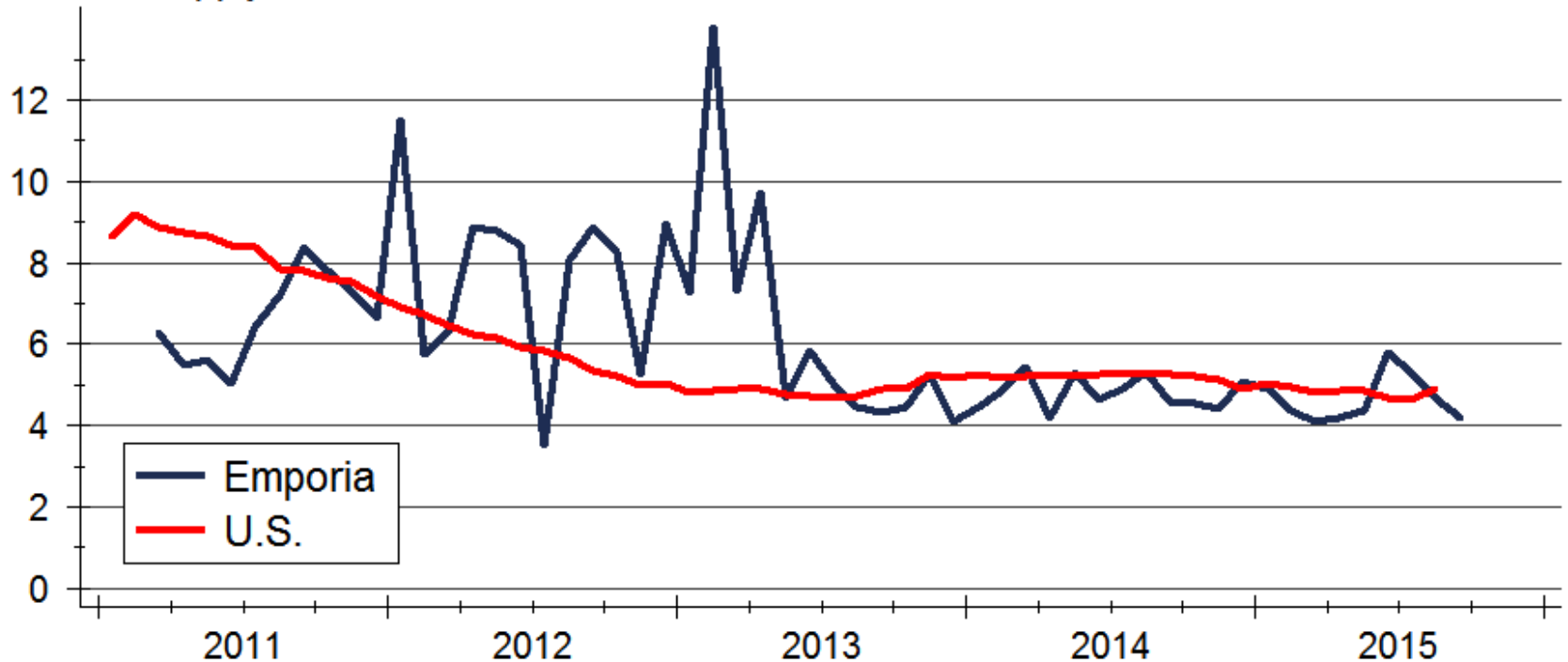
Source: Sunflower Association of REALTORS®

Kansas Home Sales Forecast



Inventories of Homes Available for Sale

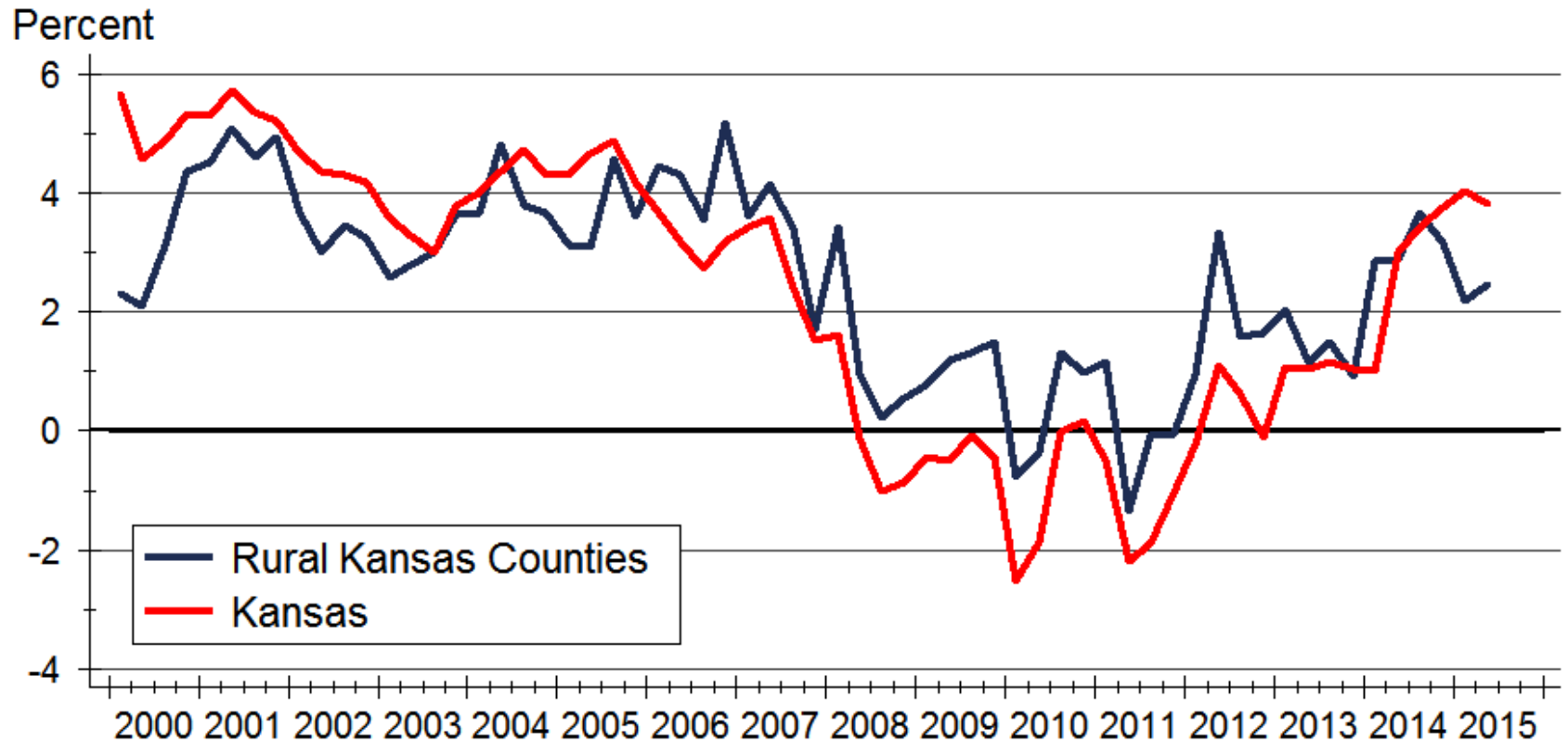
Months' Supply



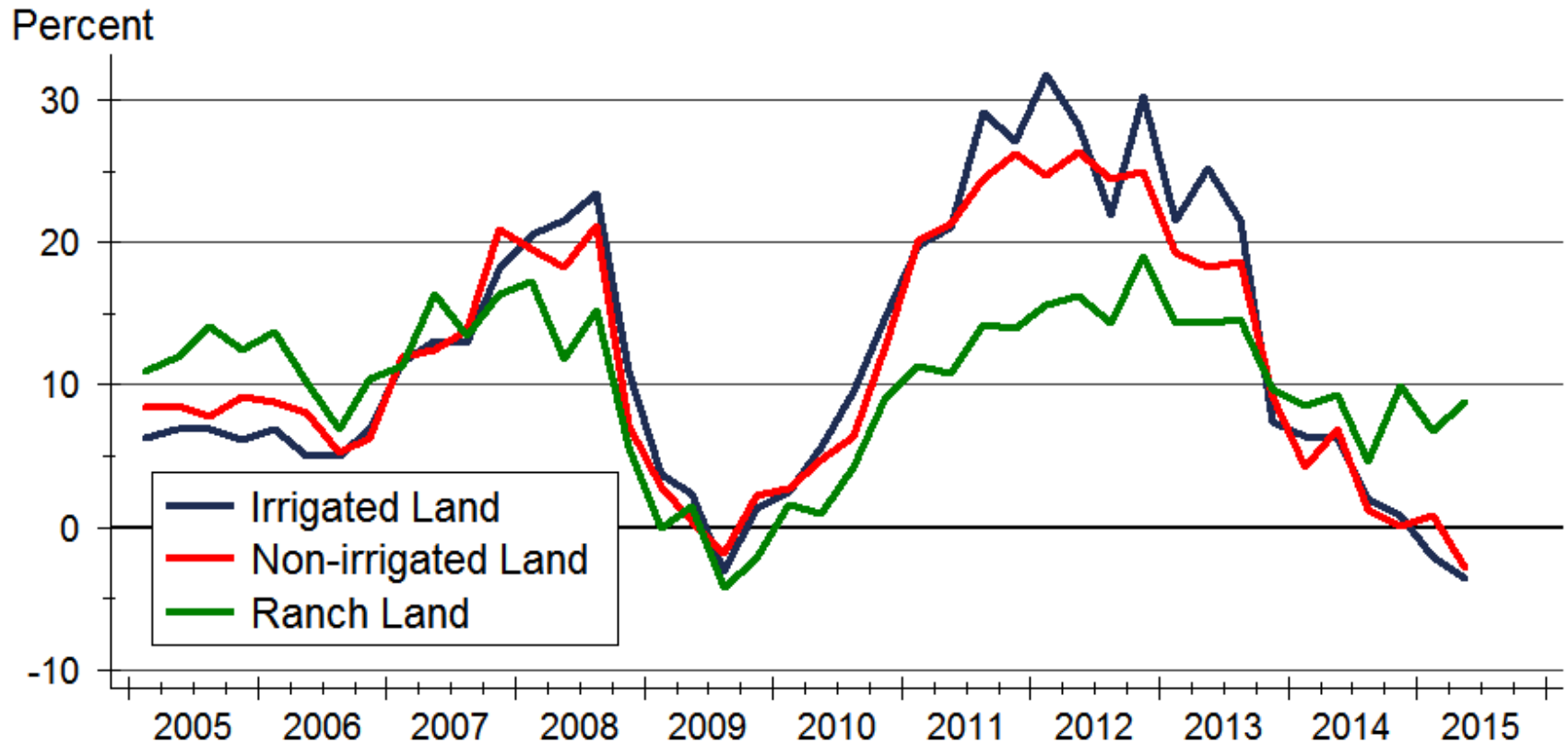
Source: NAR and Sunflower Association of REALTORS®

Note: Data are seasonally adjusted

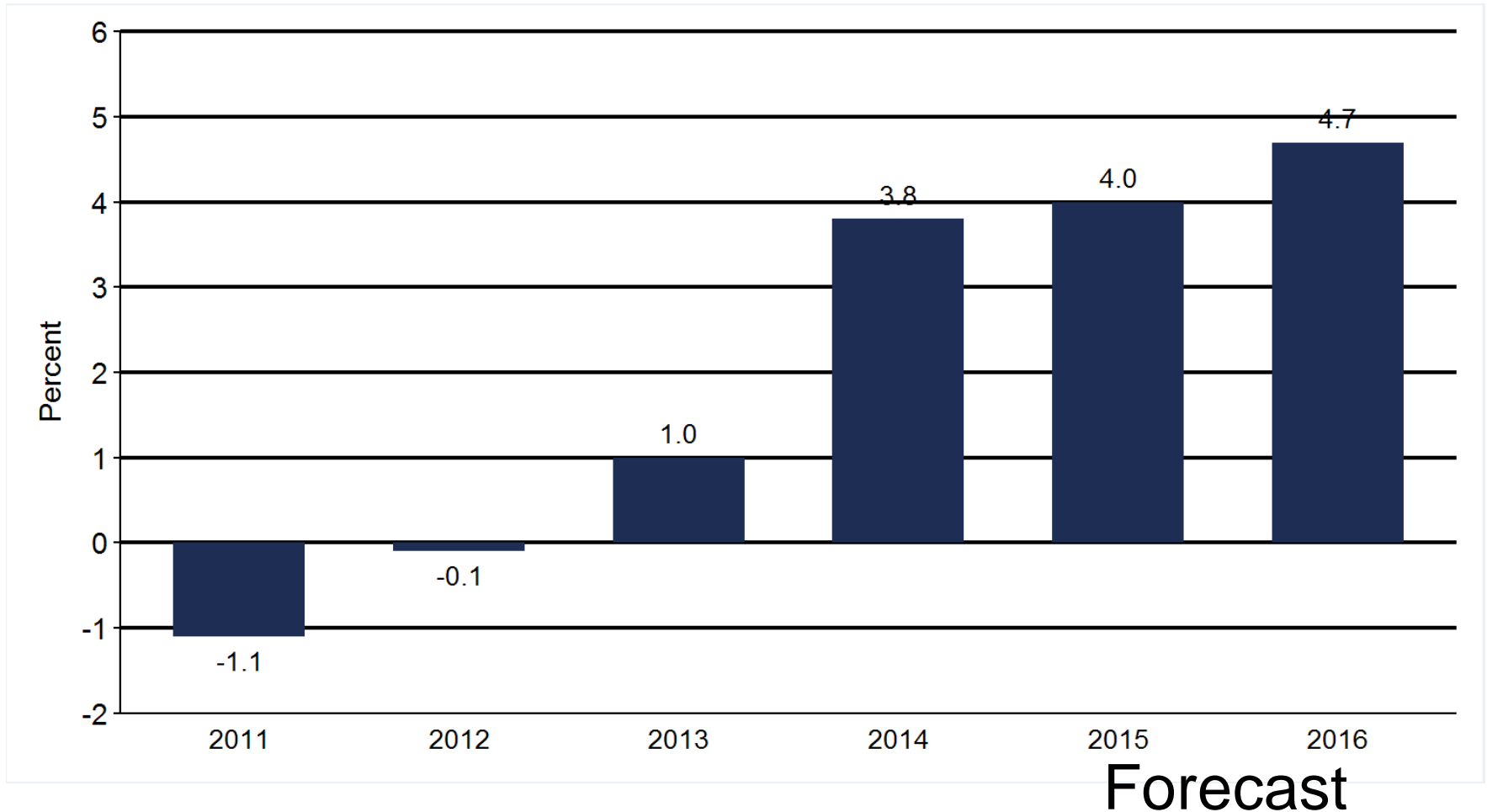
Home Price Appreciation



Rural Land Values

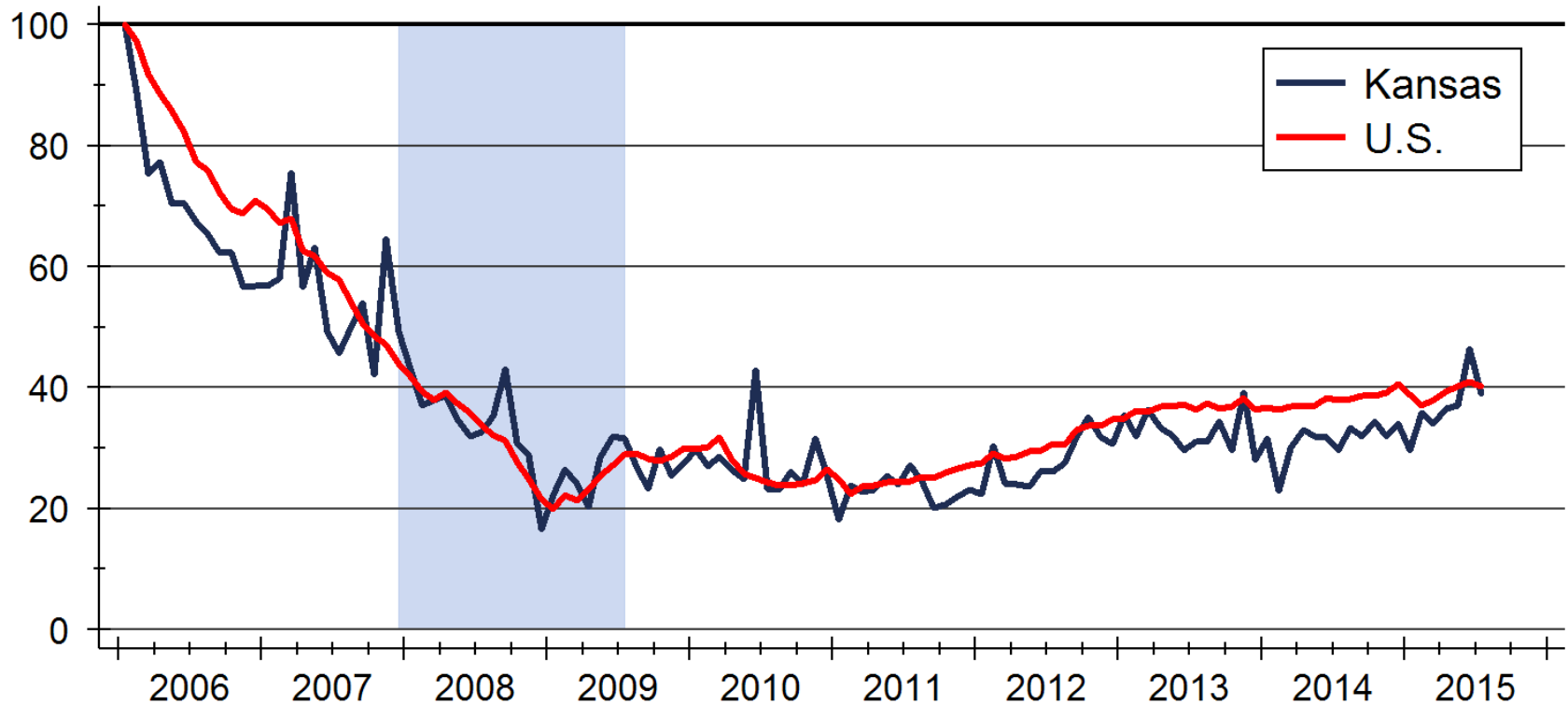


Home Price Appreciation Forecast



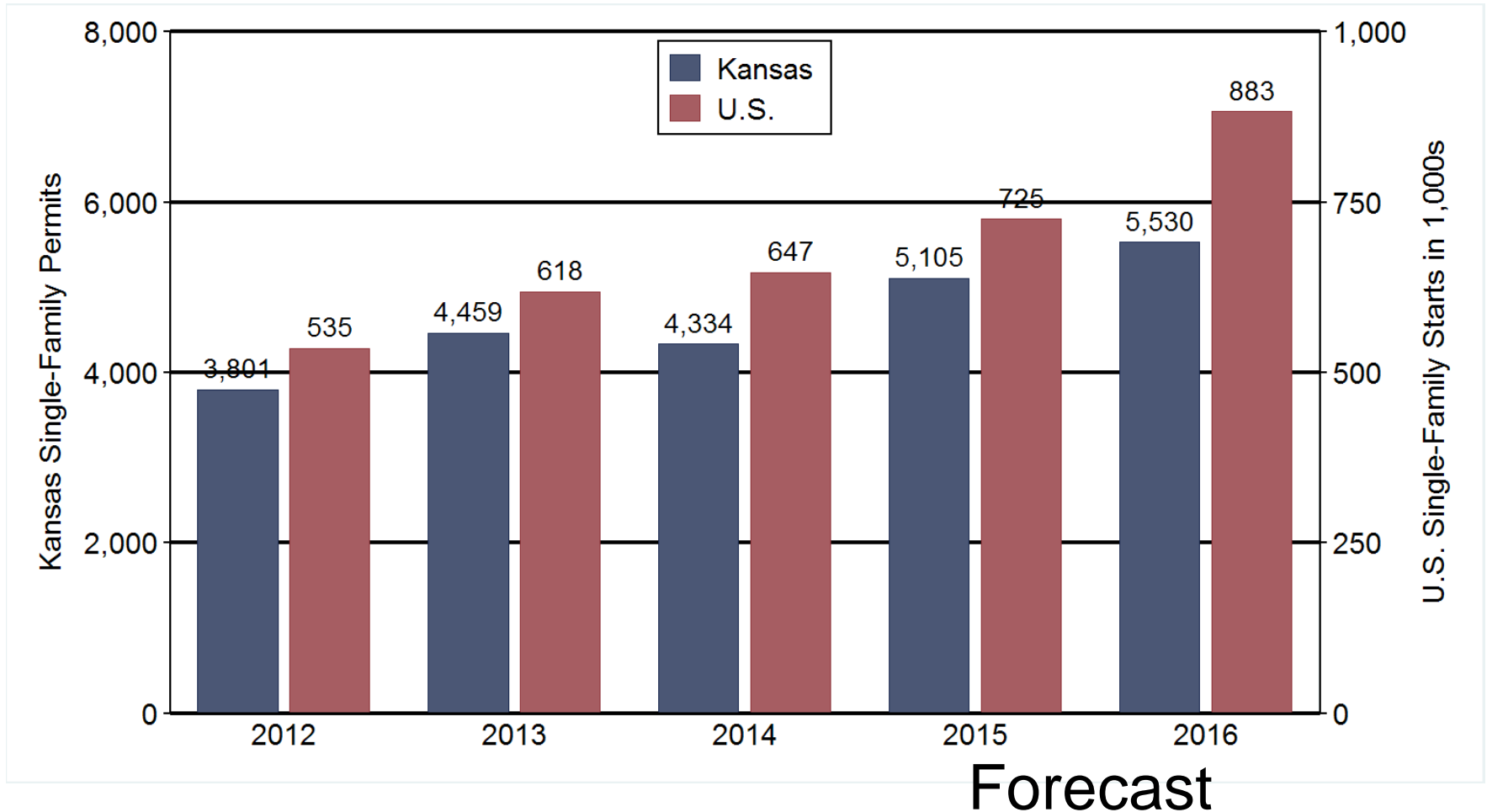
New Single-Family Building Permits

Index: 2006m1 = 100



Source: U.S. Bureau of the Census

Kansas Construction Forecast



2016 Housing Forecast

	Kansas City	Lawrence	Manhattan	Topeka	Wichita
Sales	38,280 units +7.3%	2,020 units +7.4%	950 units +9.2%	3,430 units +4.6%	9,970 units +3.3
Permits	5,260 units +11.0%	225 units -4.3%	175 units +6.1%	315 units +3.3%	1,065 units +4.9
Home Prices	+6.3%	+3.0%	+4.9%	+0.9%	+3.0%

Sources: Heartland MLS; Lawrence Board of REALTORS®; Manhattan Association of REALTORS®; Sunflower Association of REALTORS®; South Central Kansas MLS; U.S. Bureau of the Census; City of Manhattan; Federal Housing Finance Agency; WSU Center for Real Estate

Thanks again to this year's Forecast sponsors...



Security 1st Title



Welcome to 80 Years of Friendly

You can download a copy of the complete
2016 Kansas Housing Forecast
with specific information about Northeast Kansas at
www.wichita.edu/realestate

WSU Center for Real Estate

Laying a Foundation for Real Estate in Kansas



WICHITA STATE
UNIVERSITY

W. FRANK BARTON
SCHOOL OF BUSINESS

