



Kansas

HOUSING
FORECAST

A NEW PERSPECTIVE



WICHITA STATE
UNIVERSITY

W. FRANK BARTON
SCHOOL OF BUSINESS



Thanks to the sponsors of this year's Forecast publications...



Security 1st Title



CREDIT UNION SM



CREDIT UNION
of America

Welcome to 80 Years of Friendly



WICHITA STATE
UNIVERSITY
W. FRANK BARTON
SCHOOL OF BUSINESS



Thanks also to the following REALTOR® boards and MLS systems:



South Central Kansas MLS



LAWRENCE
Board of REALTORS®



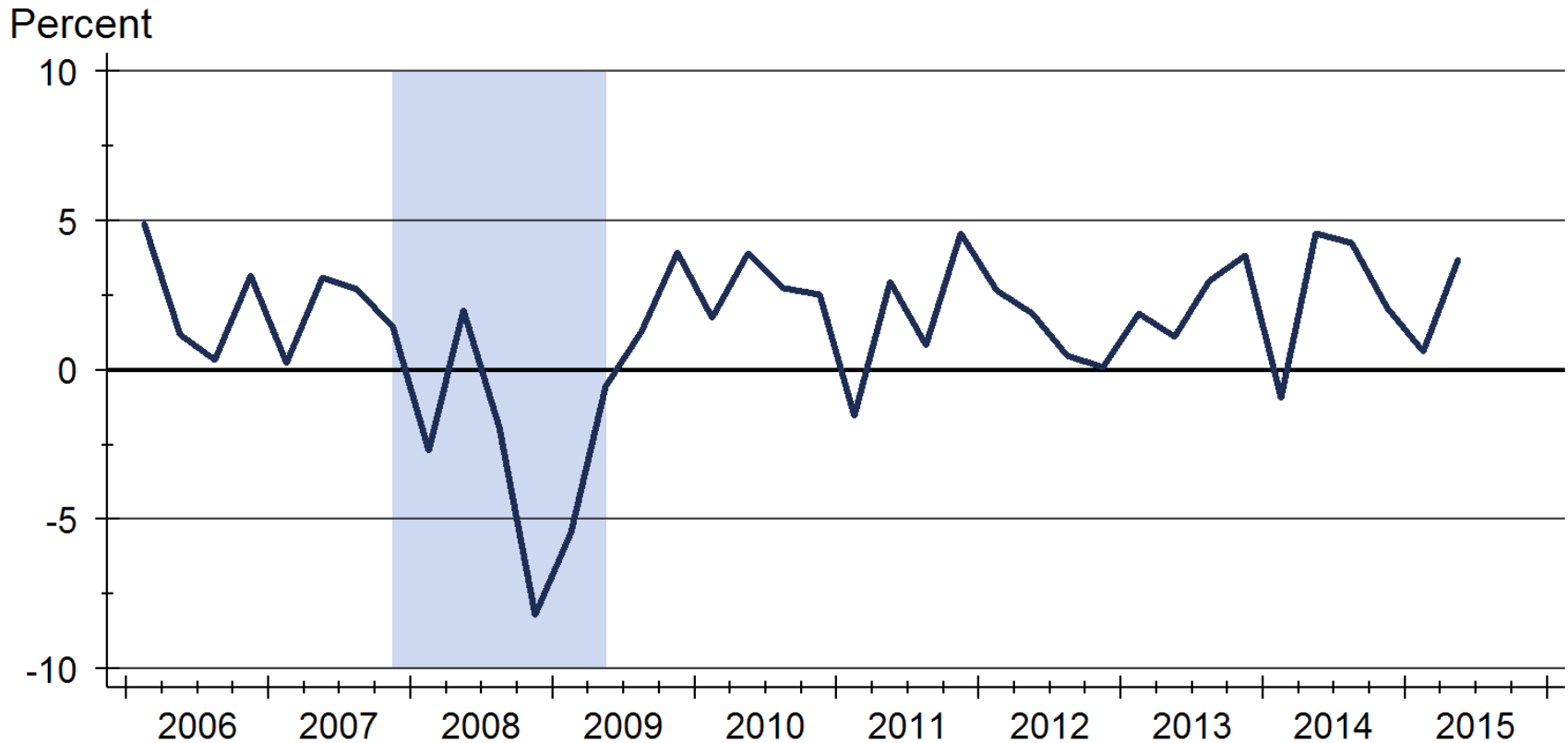
HEARTLAND MLS



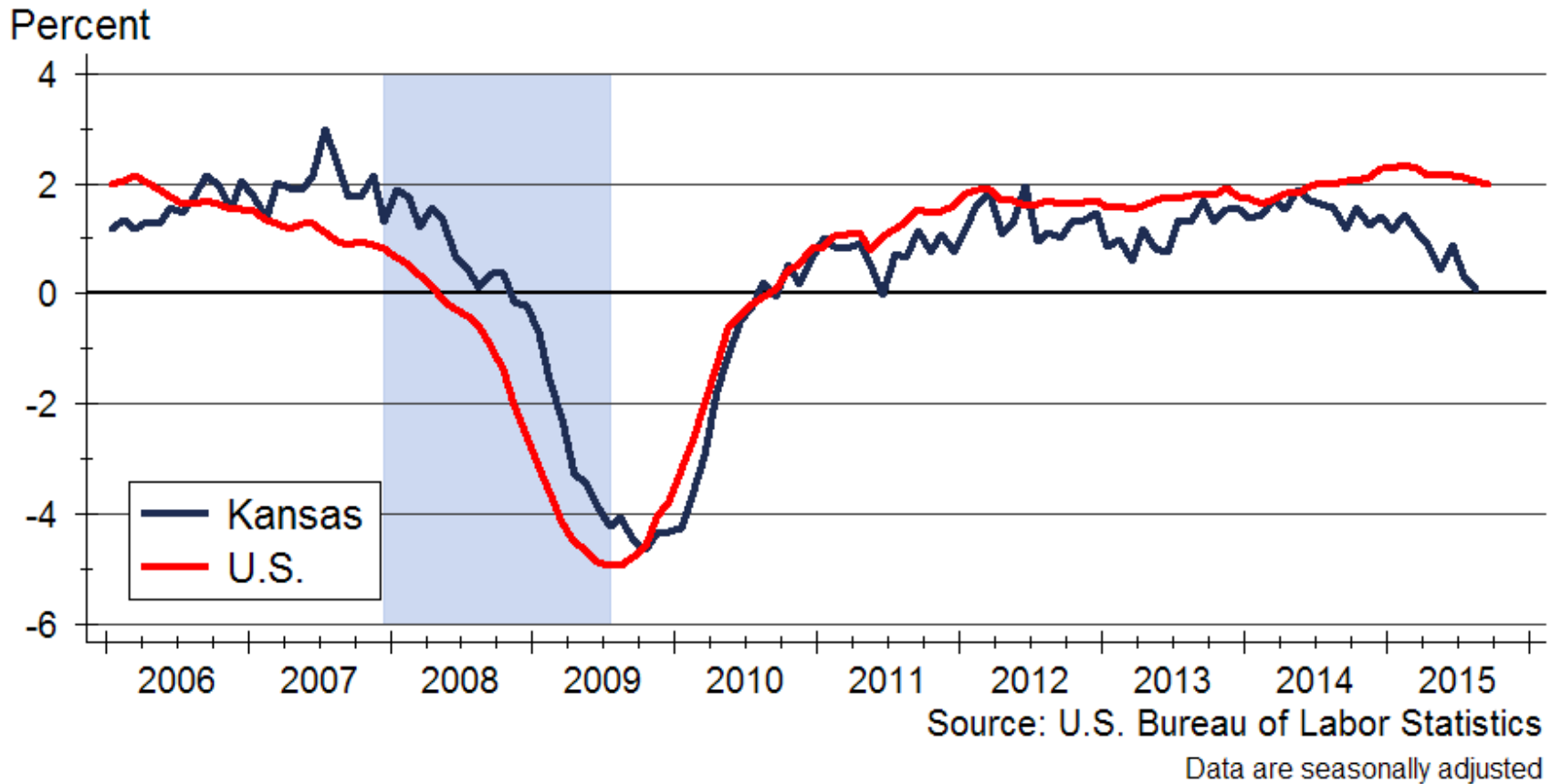
and participating
REALTOR® MLS systems
across Kansas



Real GDP Growth

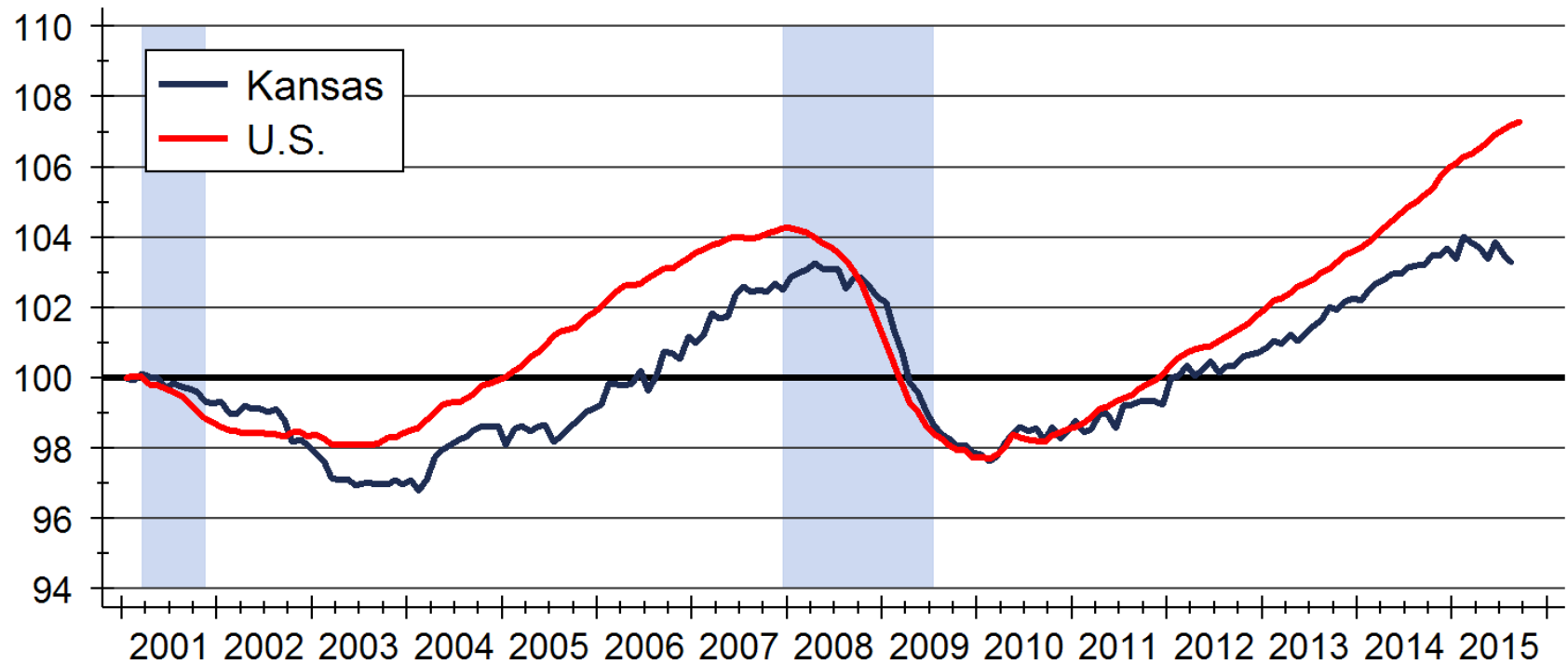


Employment Growth



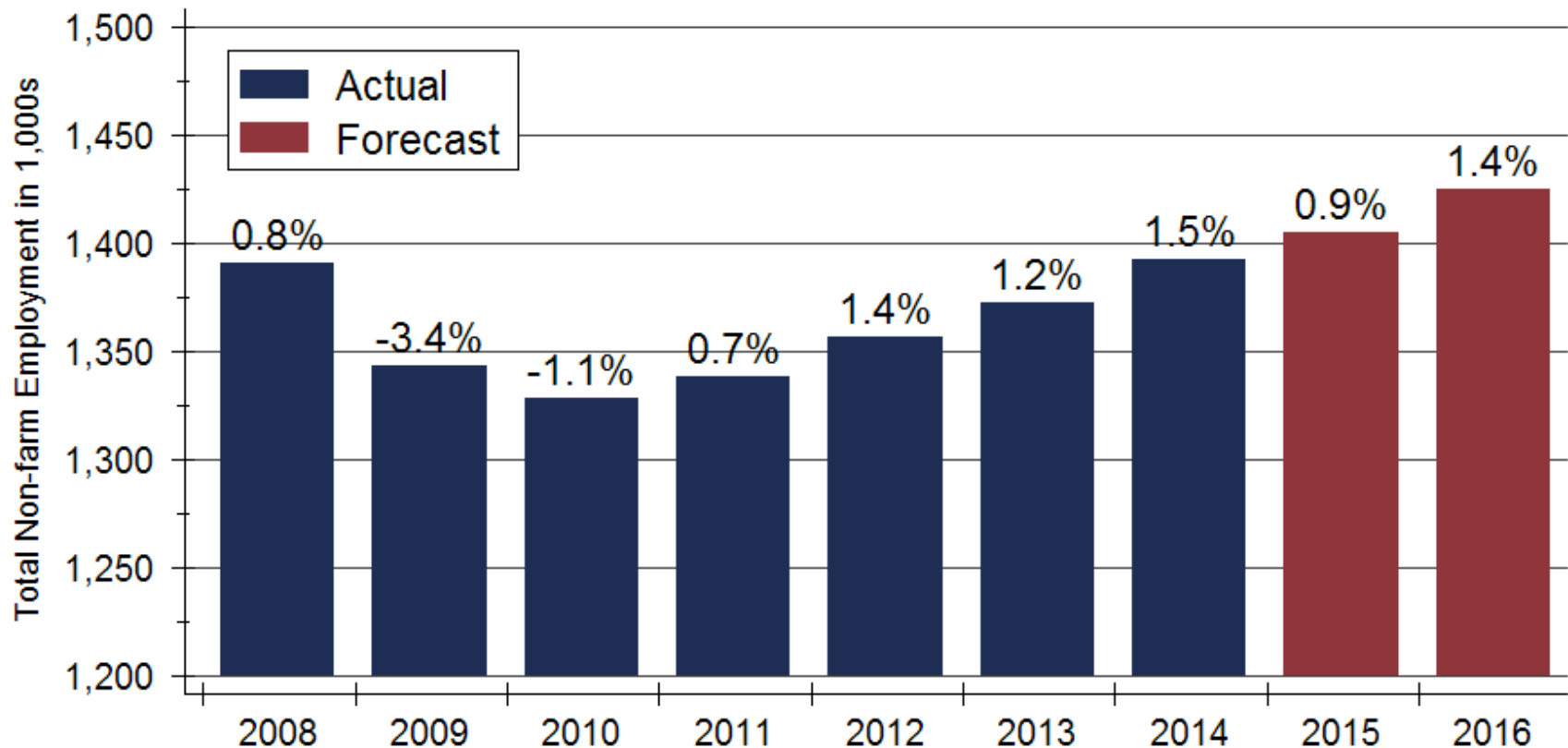
Total Non-Farm Employment

Index: 2001m1 = 100



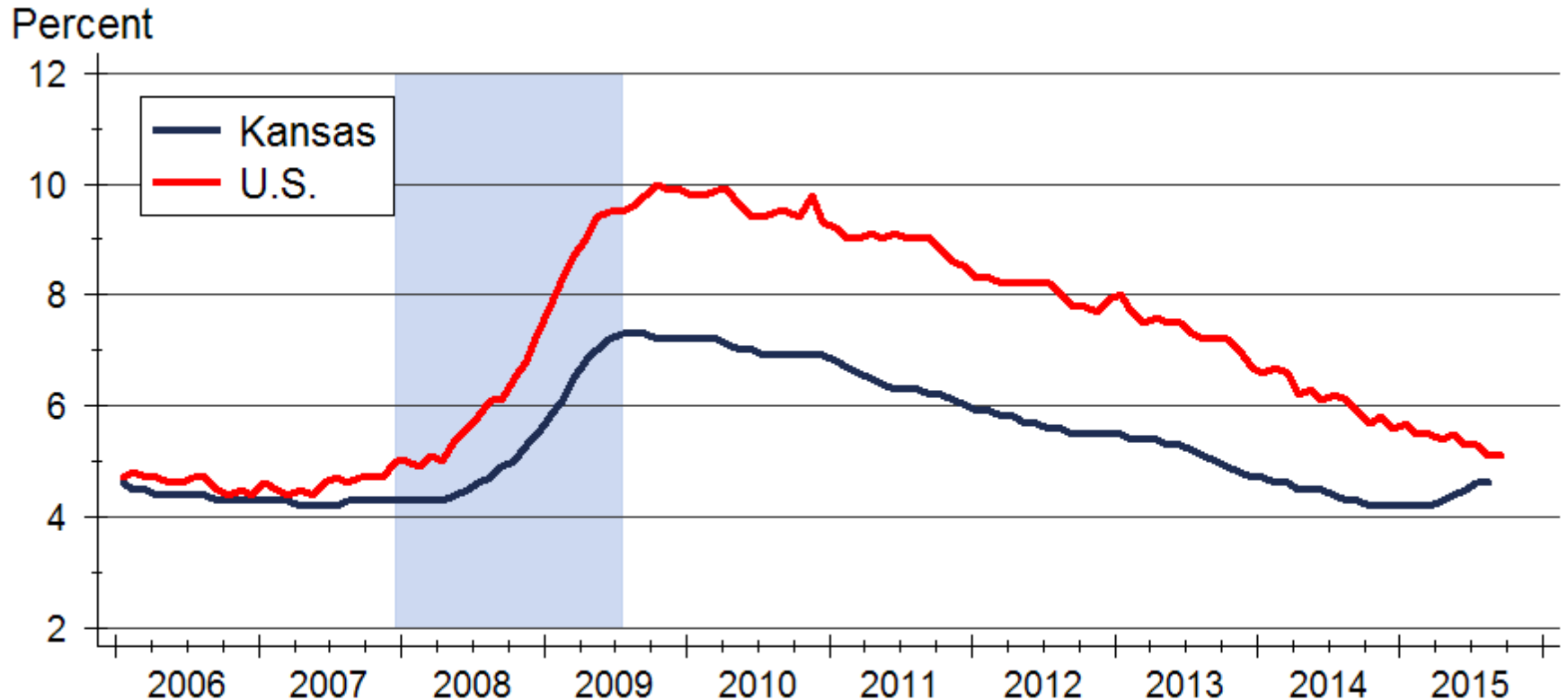
Source: U.S. Bureau of Labor Statistics
Index created from seasonally adjusted data

Kansas Employment Forecast



Sources: Kansas Department of Labor and WSU CEDBR

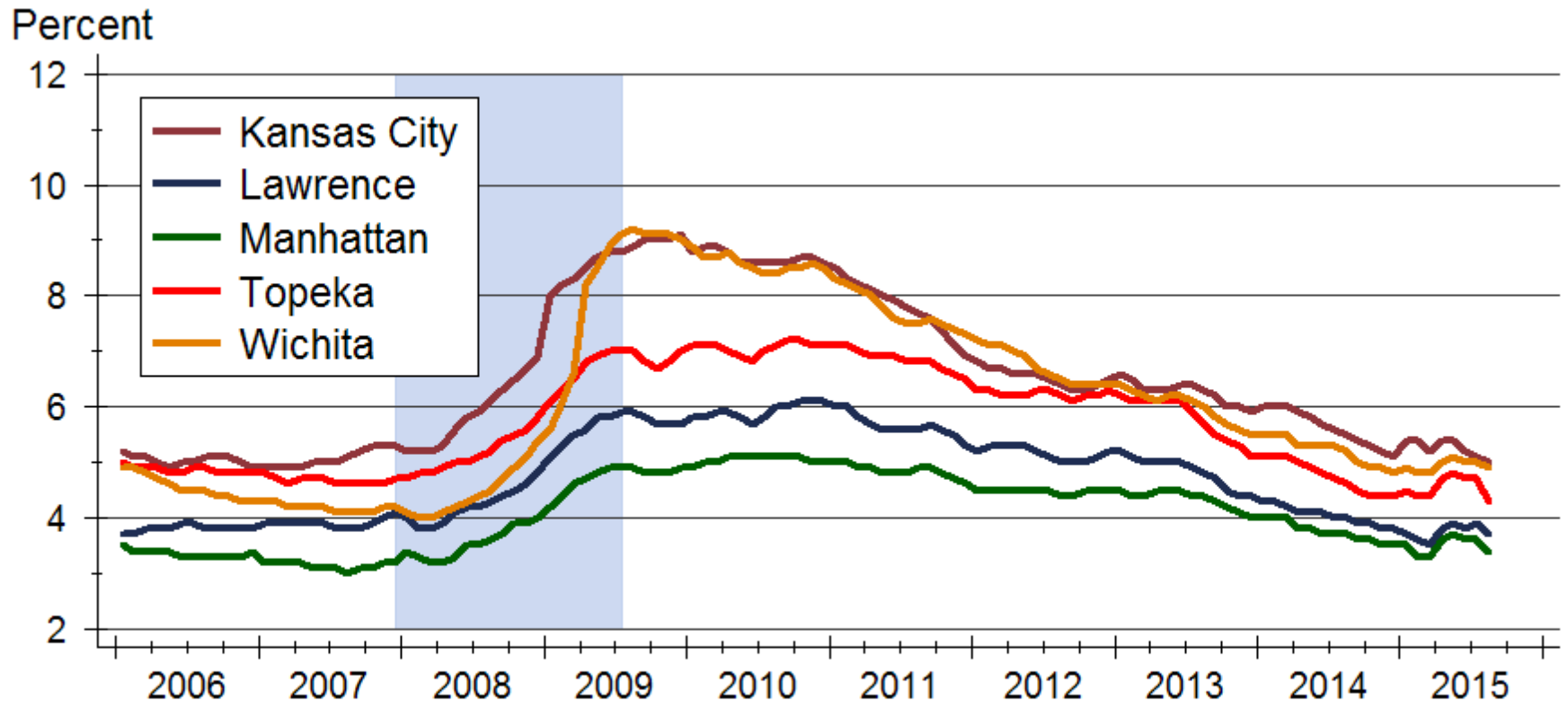
Unemployment Rate



Source: U.S. Bureau of Labor Statistics

Data are seasonally adjusted

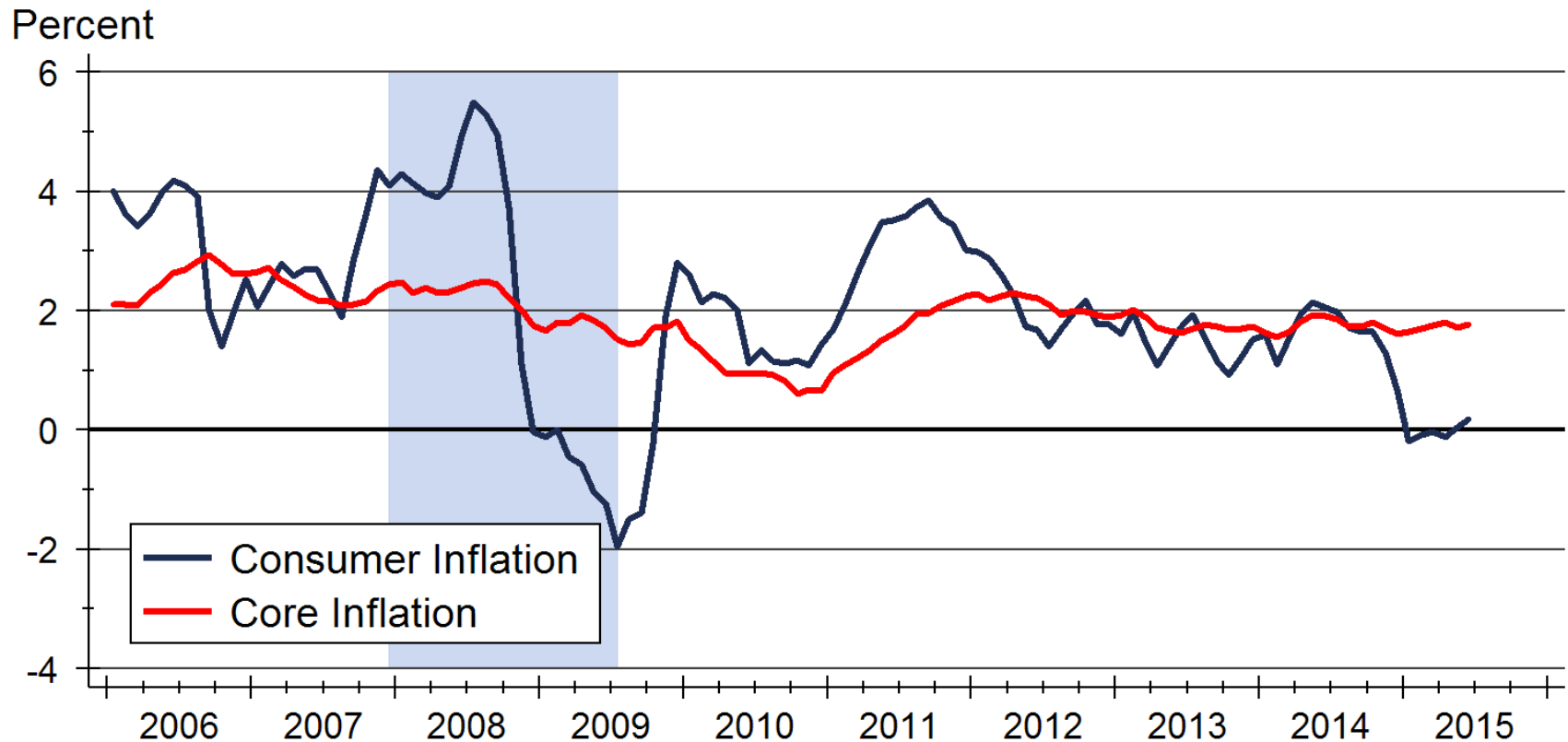
Unemployment Rate



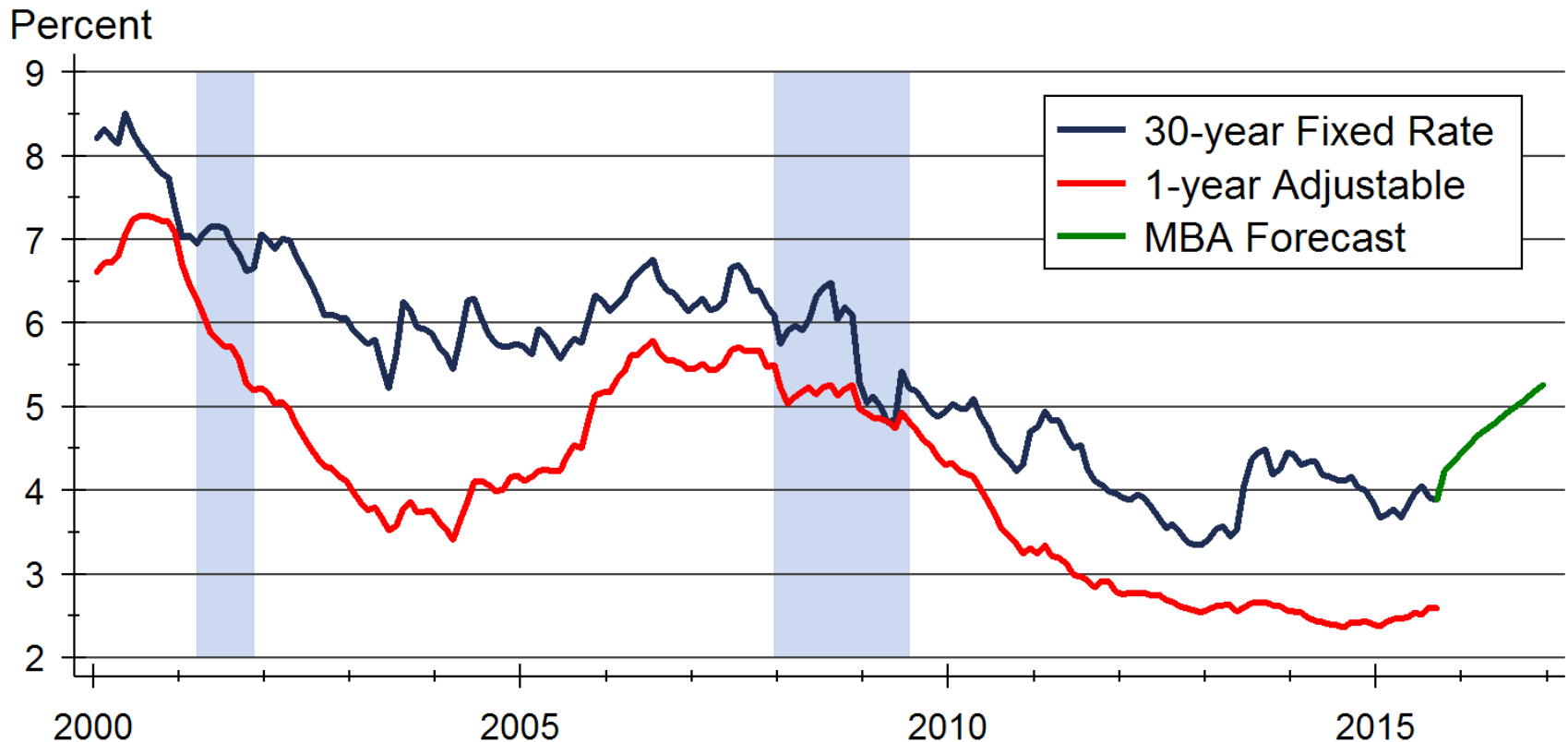
Source: U.S. Bureau of Labor Statistics

Data are seasonally adjusted

Consumer Inflation

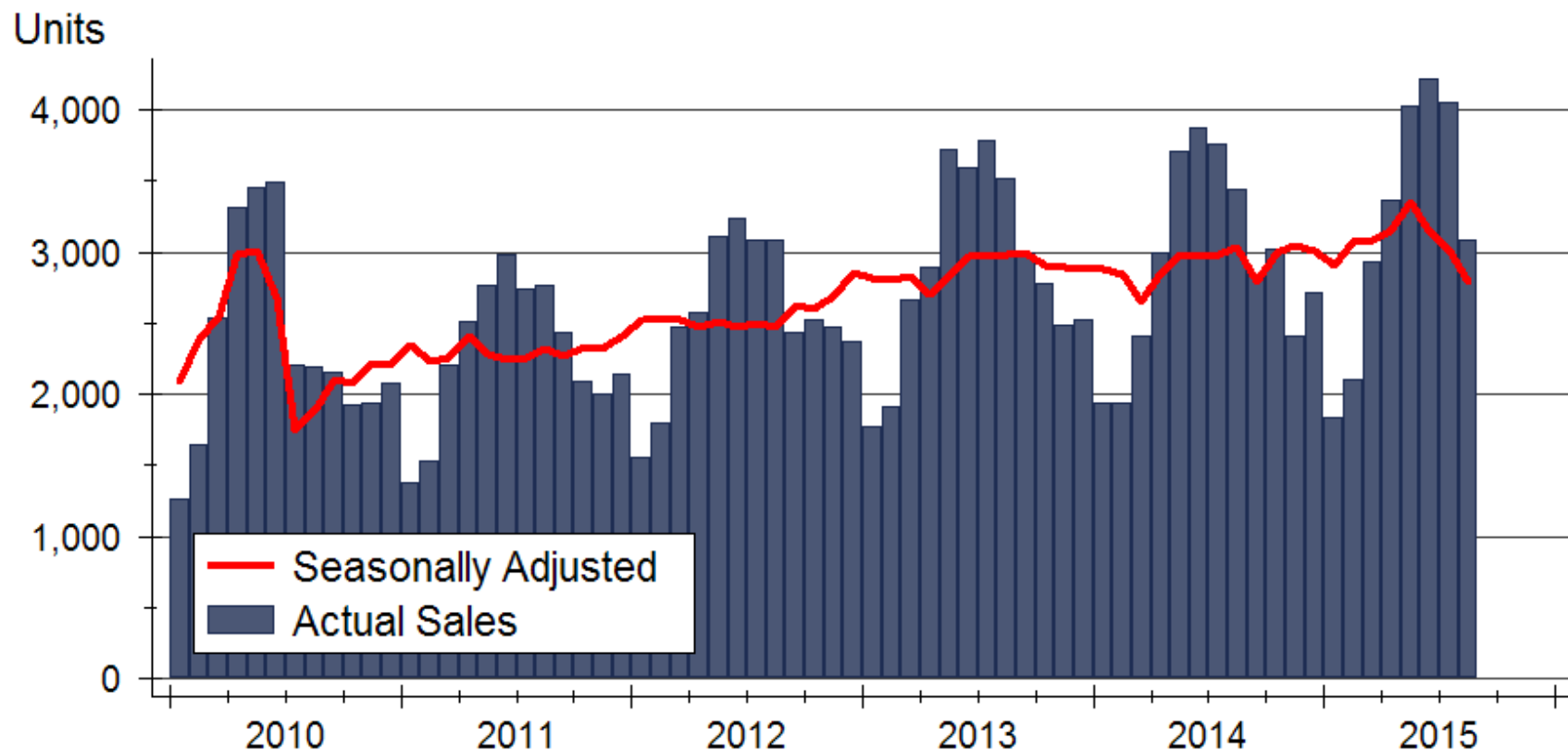


Mortgage Rate Forecast

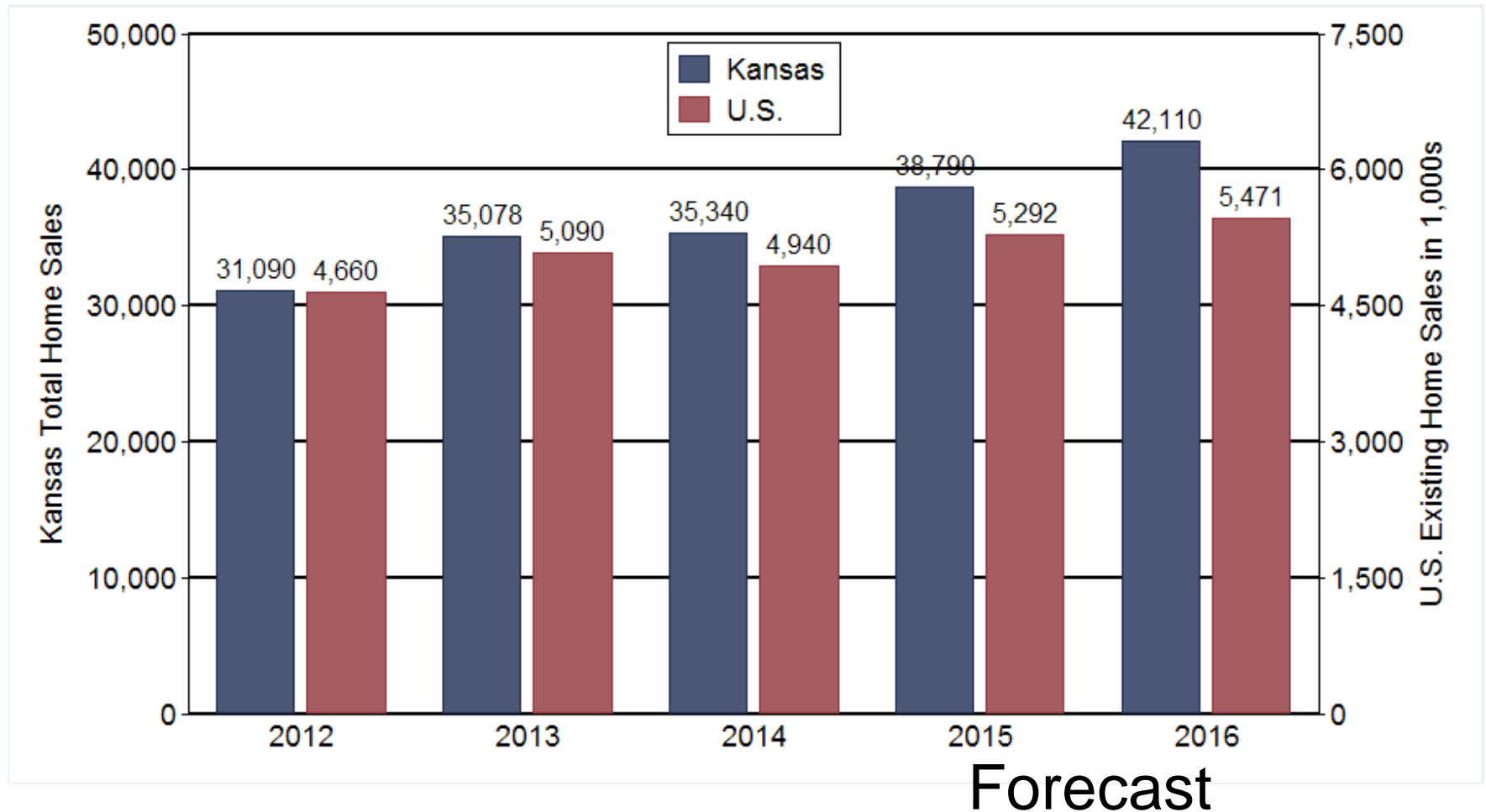


Sources: Freddie Mac; Mortgage Bankers Association

Kansas Home Sales Activity

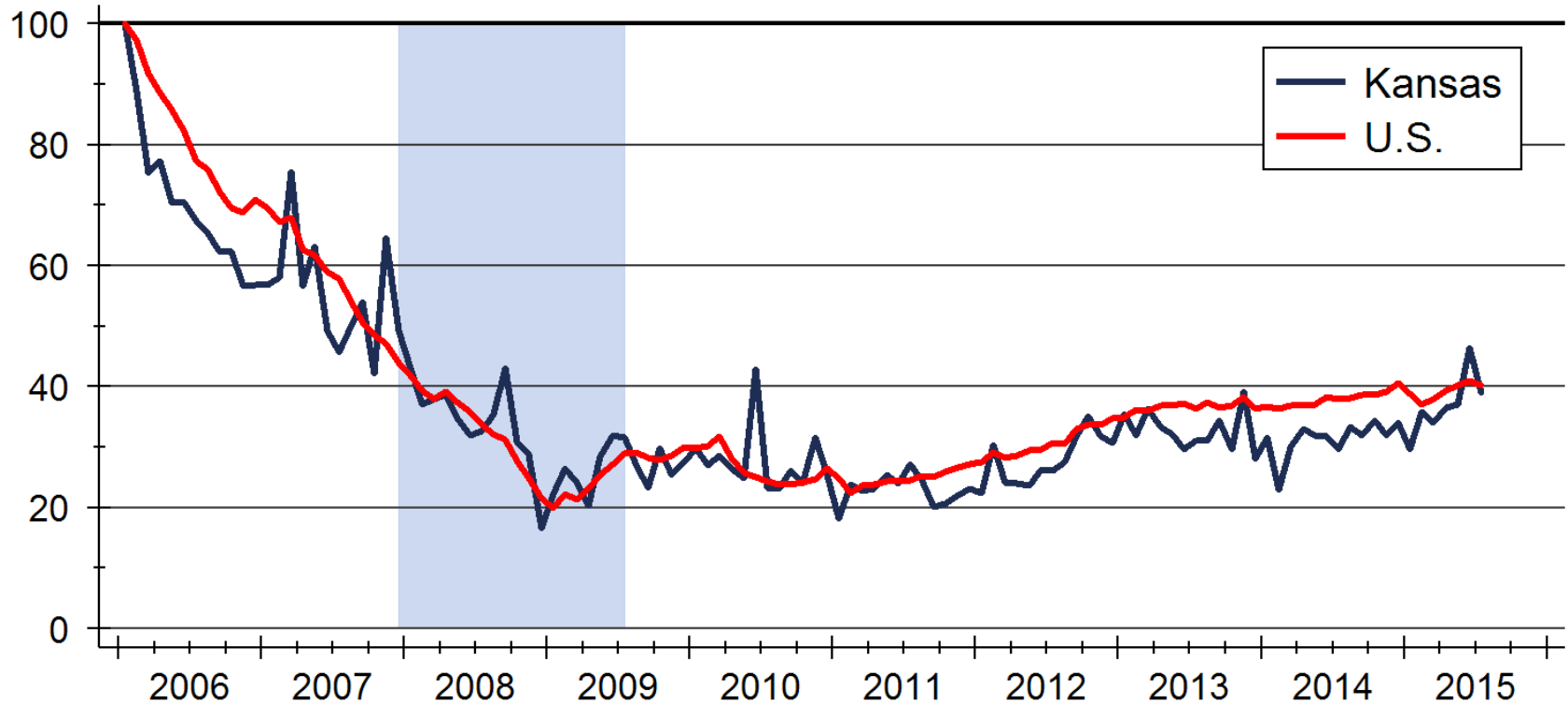


Kansas Home Sales Forecast



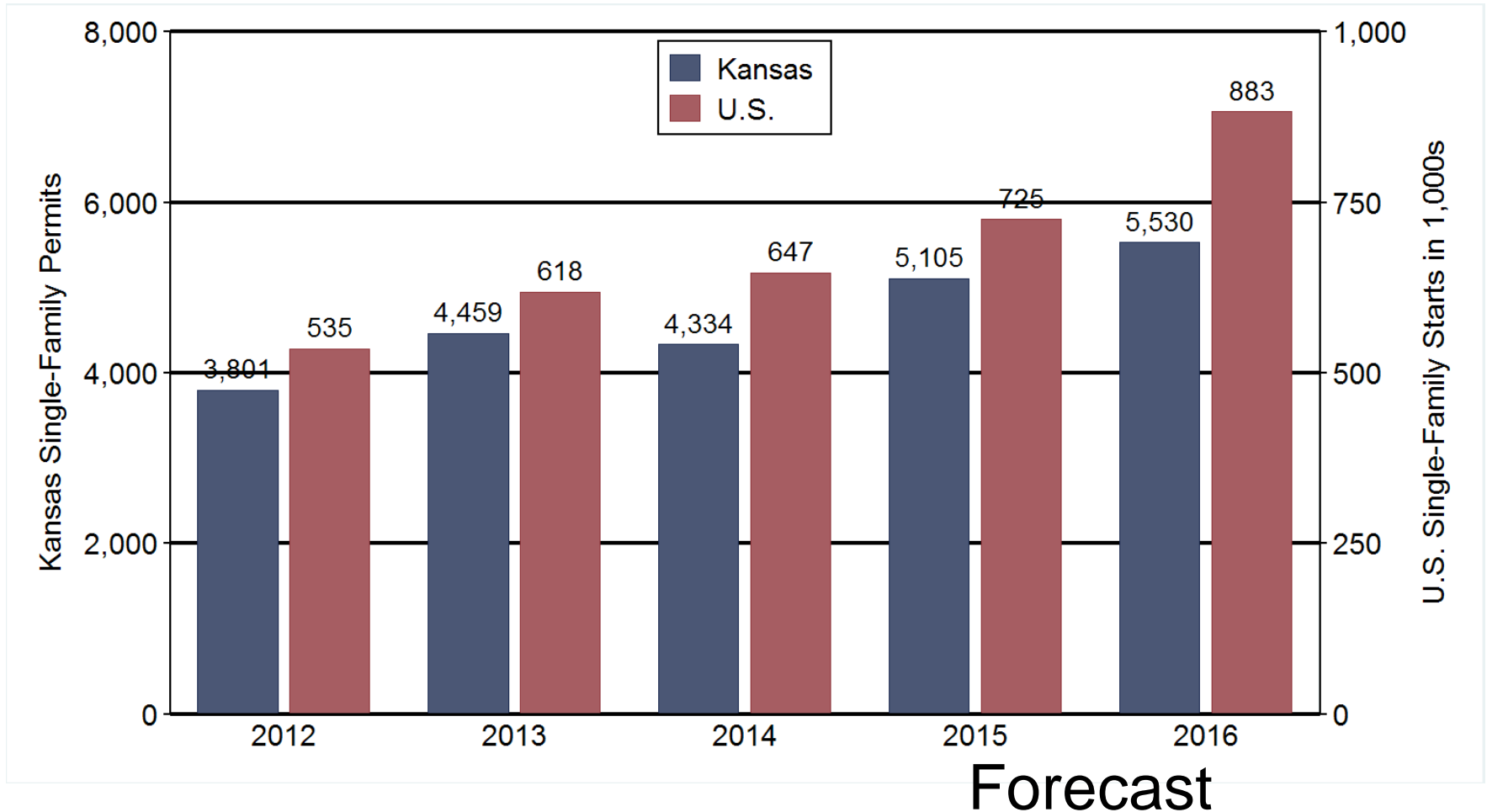
New Single-Family Building Permits

Index: 2006m1 = 100



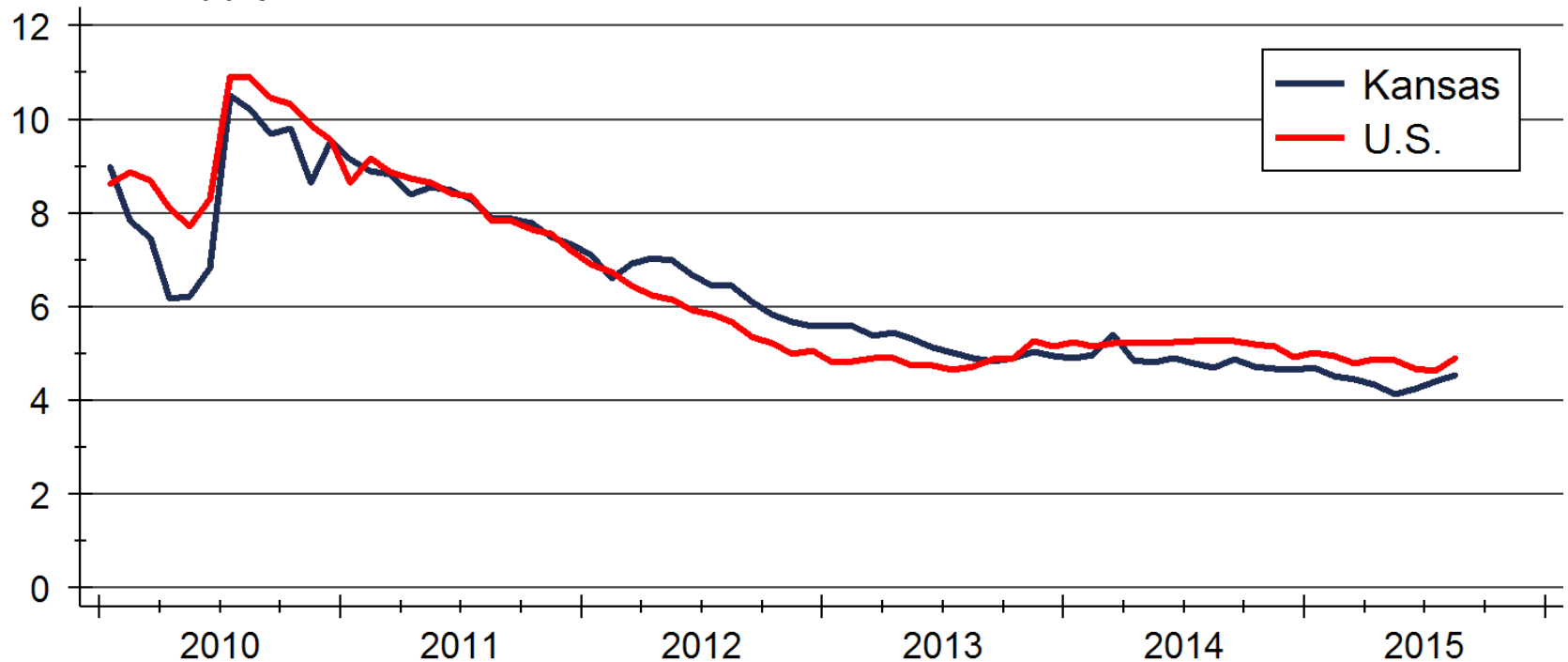
Source: U.S. Bureau of the Census

Kansas Construction Forecast



Kansas Total Home Inventories

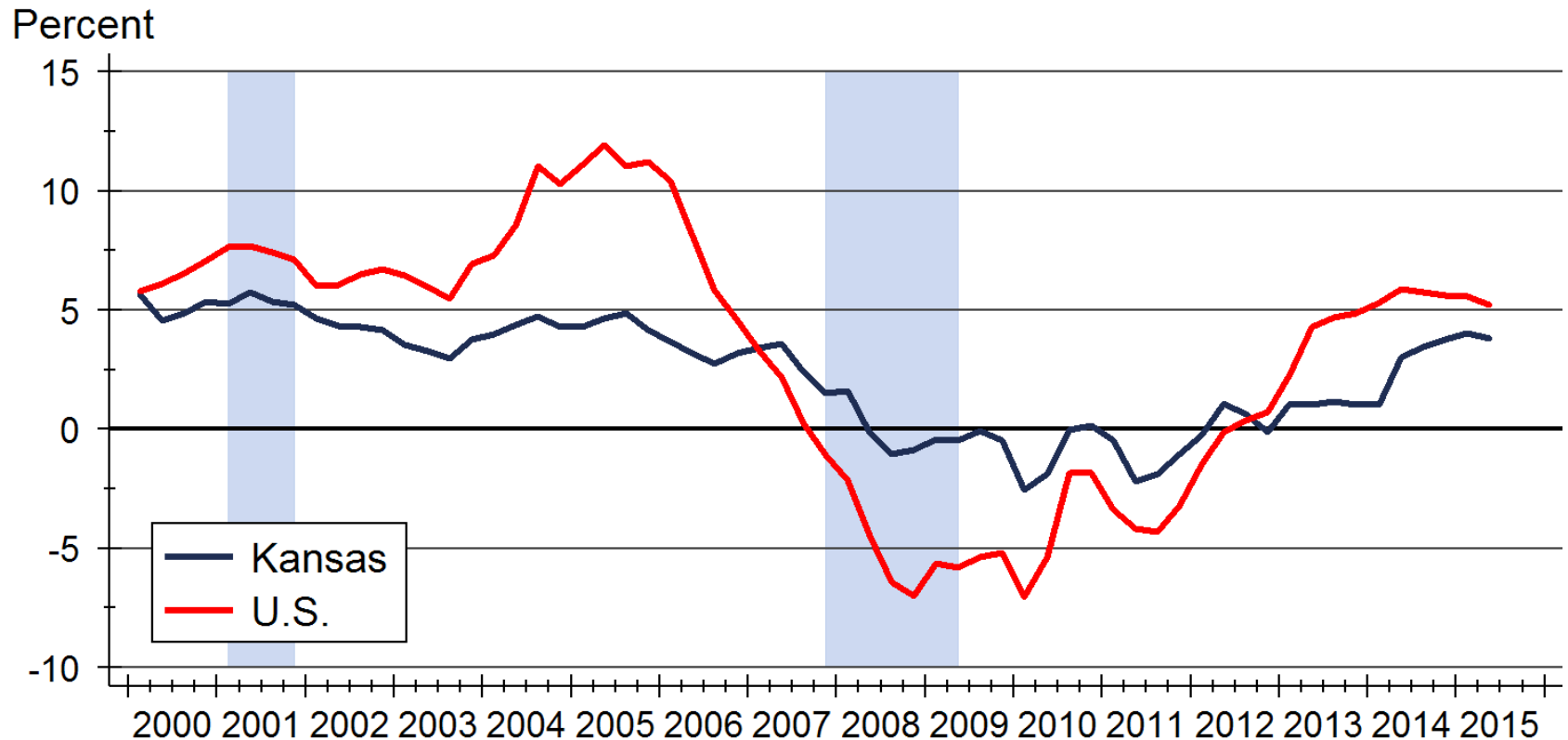
Months' Supply



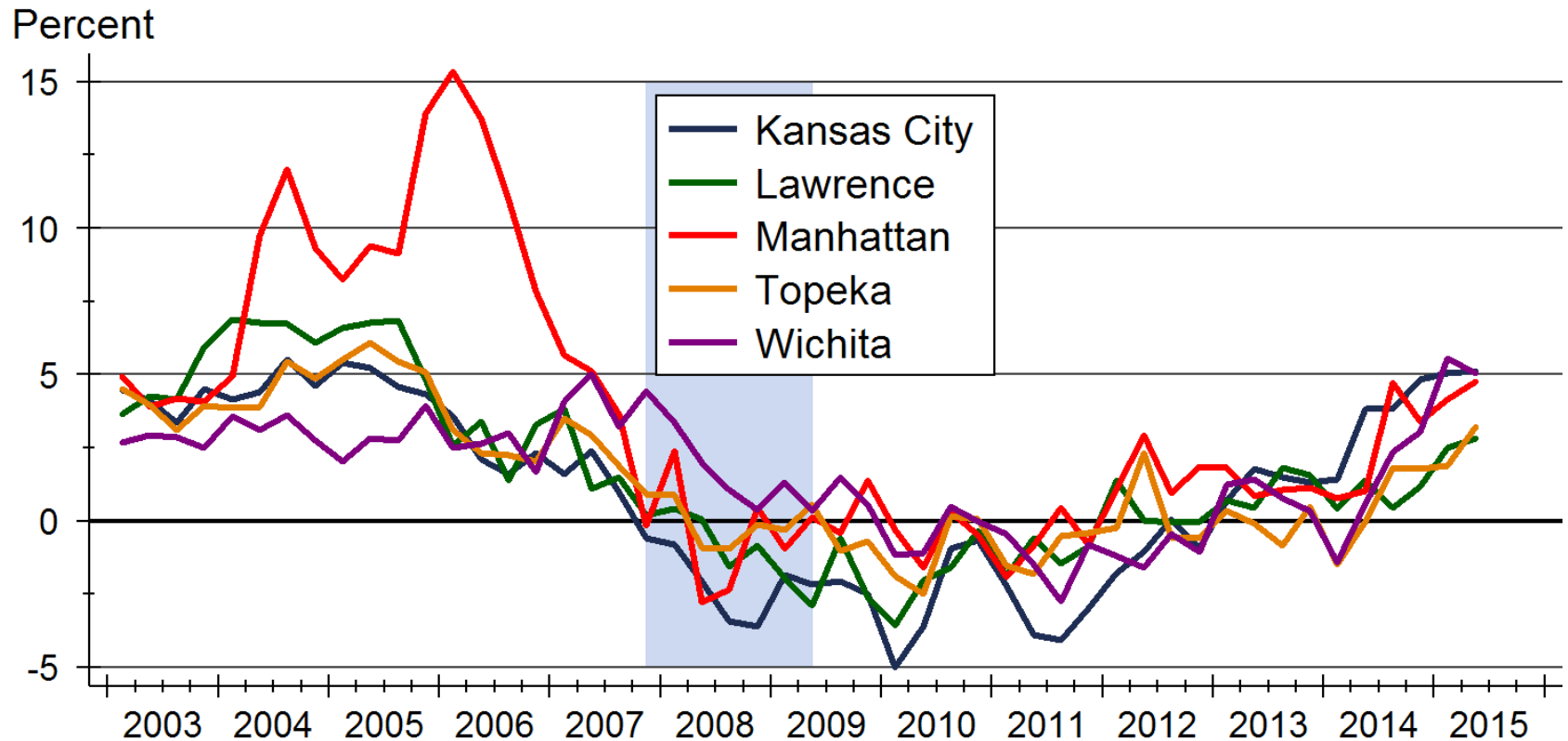
Source: NAR and Participating Kansas REALTOR® MLS Systems

Note: Data are seasonally adjusted

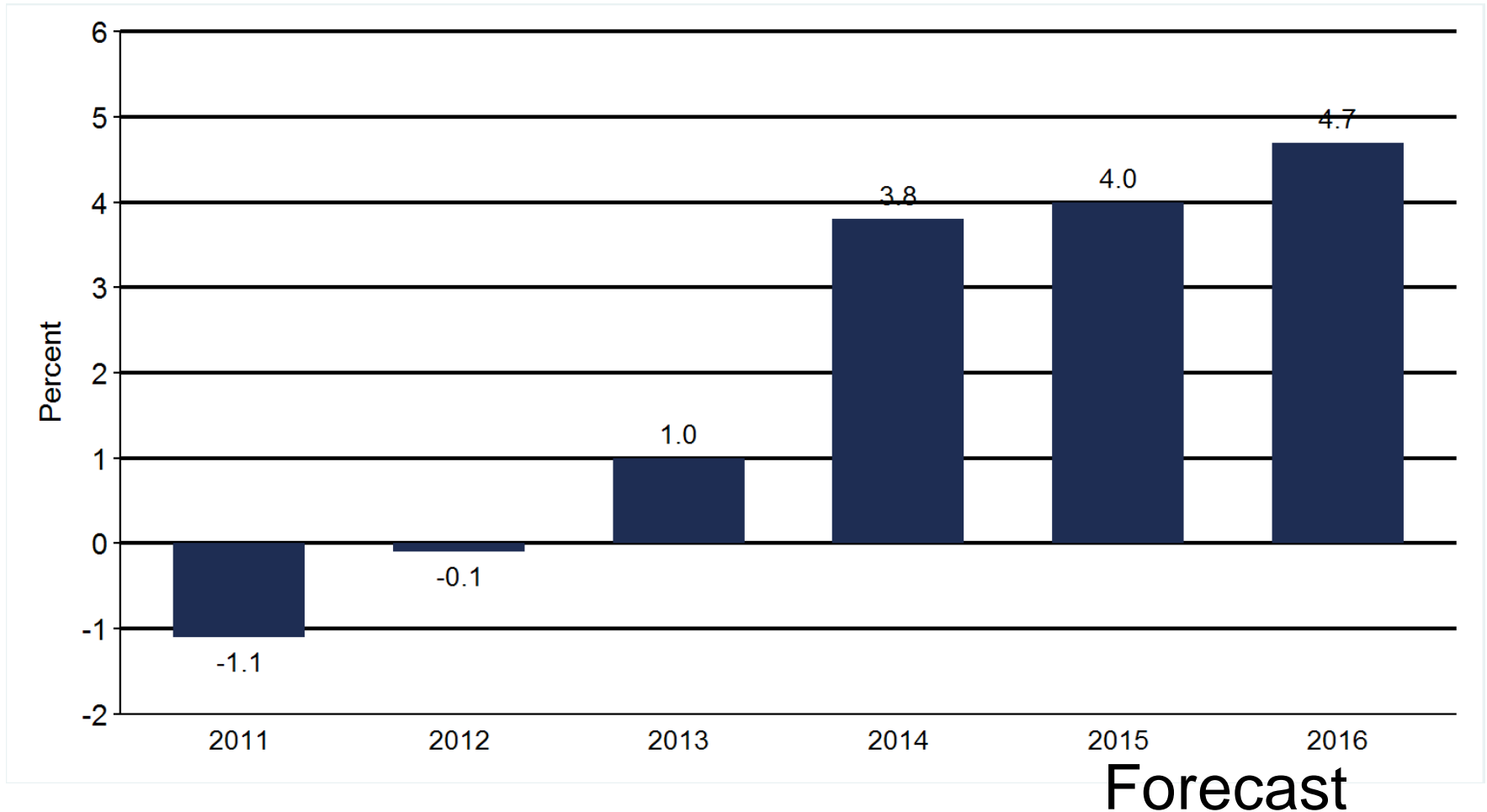
Home Price Appreciation



Home Price Appreciation

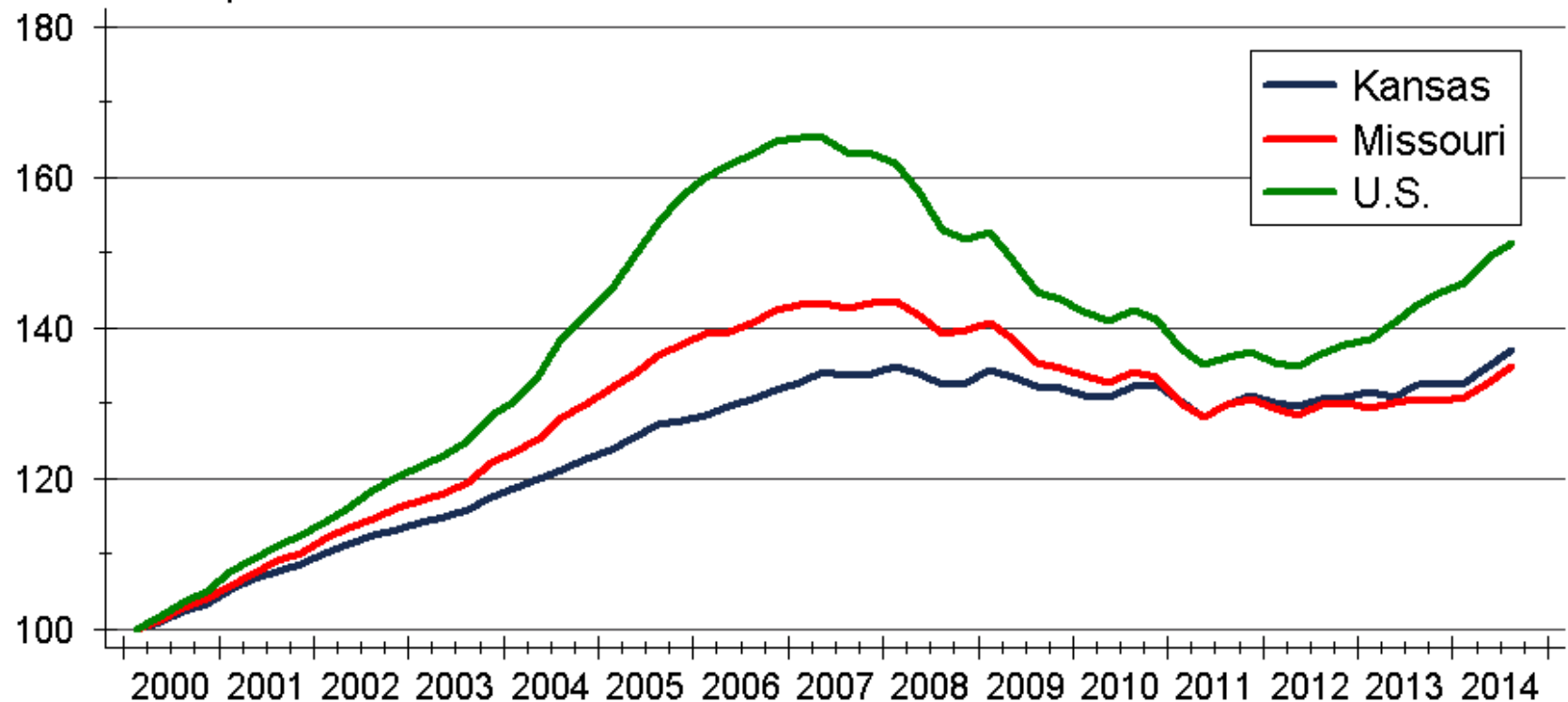


Home Price Appreciation Forecast



Home Price Appreciation in Kansas and Missouri

Index: 2000q1 = 100



Source: Federal Housing Finance Agency (FHFA)

Kansas 2016 Forecast

	2013 Actual	2014 Actual	2015 Forecast	2016 Forecast
Total Home Sales	35,078 units +12.8%	35,340 units +0.7%	38,790 units +9.8%	42,110 units +8.6%
Building Permits	4,459 units +17.3%	4,334 units -2.8%	5,105 units +17.8%	5,530 units +8.3%
Home Price Appreciation	+1.0%	+3.8%	+4.0%	+4.7%

Sources: Participating Kansas REALTOR® MLS Systems; U.S. Bureau of the Census; Federal Housing Finance Agency; WSU Center for Real Estate

2016 Housing Forecast

	Kansas City	Lawrence	Manhattan	Topeka	Wichita
Sales	38,280 units +7.3%	2,020 units +7.4%	950 units +9.2%	3,430 units +4.6%	9,970 units +3.3
Permits	5,260 units +11.0%	225 units -4.3%	175 units +6.1%	315 units +3.3%	1,065 units +4.9
Home Prices	+6.3%	+3.0%	+4.9%	+0.9%	+3.0%

Sources: Heartland MLS; Lawrence Board of REALTORS®; Manhattan Association of REALTORS®; Sunflower Association of REALTORS®; South Central Kansas MLS; U.S. Bureau of the Census; City of Manhattan; Federal Housing Finance Agency; WSU Center for Real Estate

Thanks again to this year's Forecast sponsors...



Security 1st Title



CREDIT UNION SM



CREDIT UNION
of America

Welcome to 80 Years of Friendly

WSU Center for Real Estate

Laying a Foundation for Real Estate in Kansas



WICHITA STATE
UNIVERSITY

W. FRANK BARTON
SCHOOL OF BUSINESS

