



PITTSBURG 2025 HOUSING OUTLOOK

Full Circle

Dr. Stanley D. Longhofer
October 15, 2025

The slides from today's presentation are available on the WSU Center for Real Estate website at

wichita.edu/realestate

2025 Crawford County Outlook Sponsor



Security 1st Title

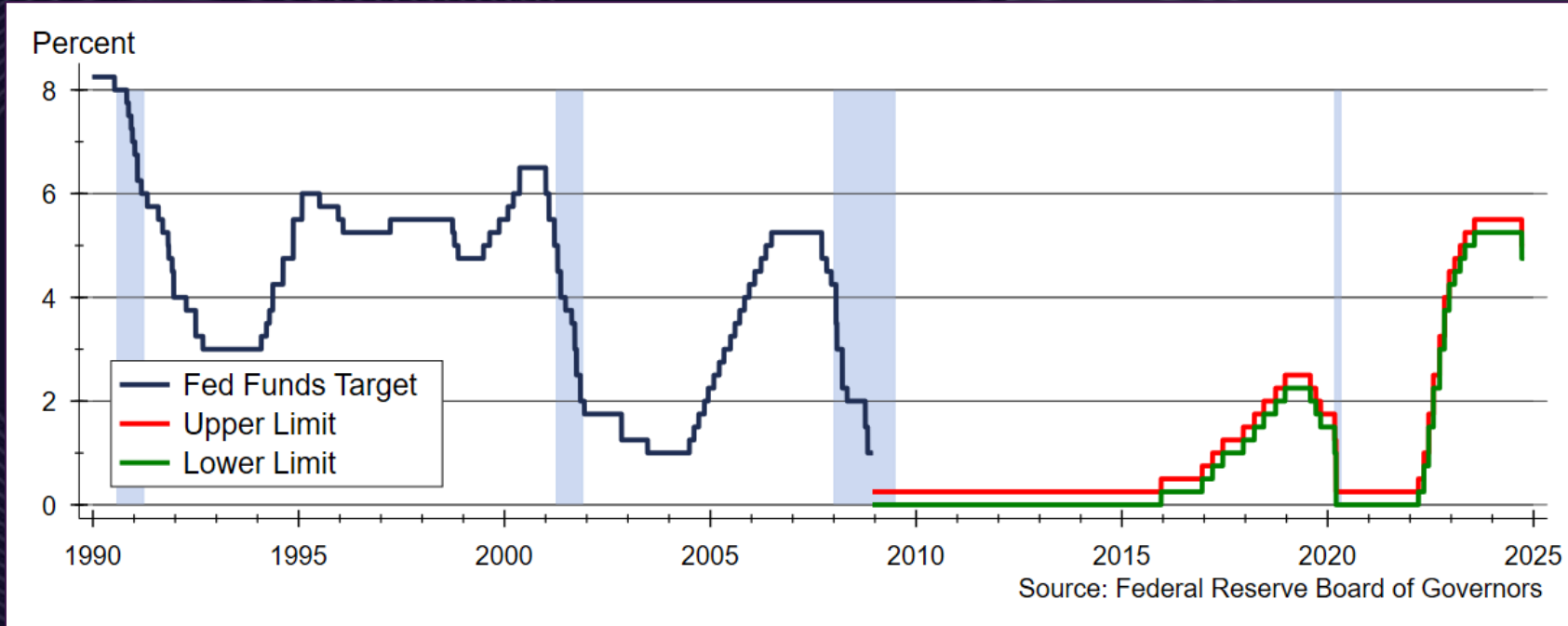


PITTSBURG

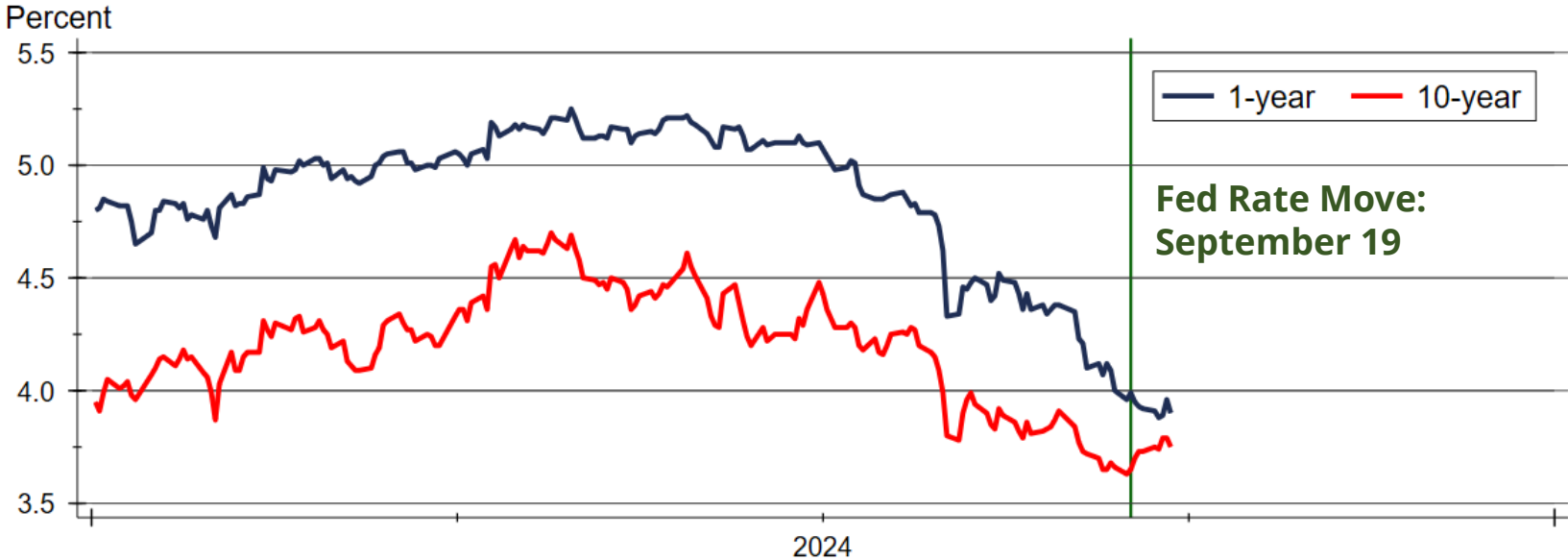




Fed Funds Target Rate



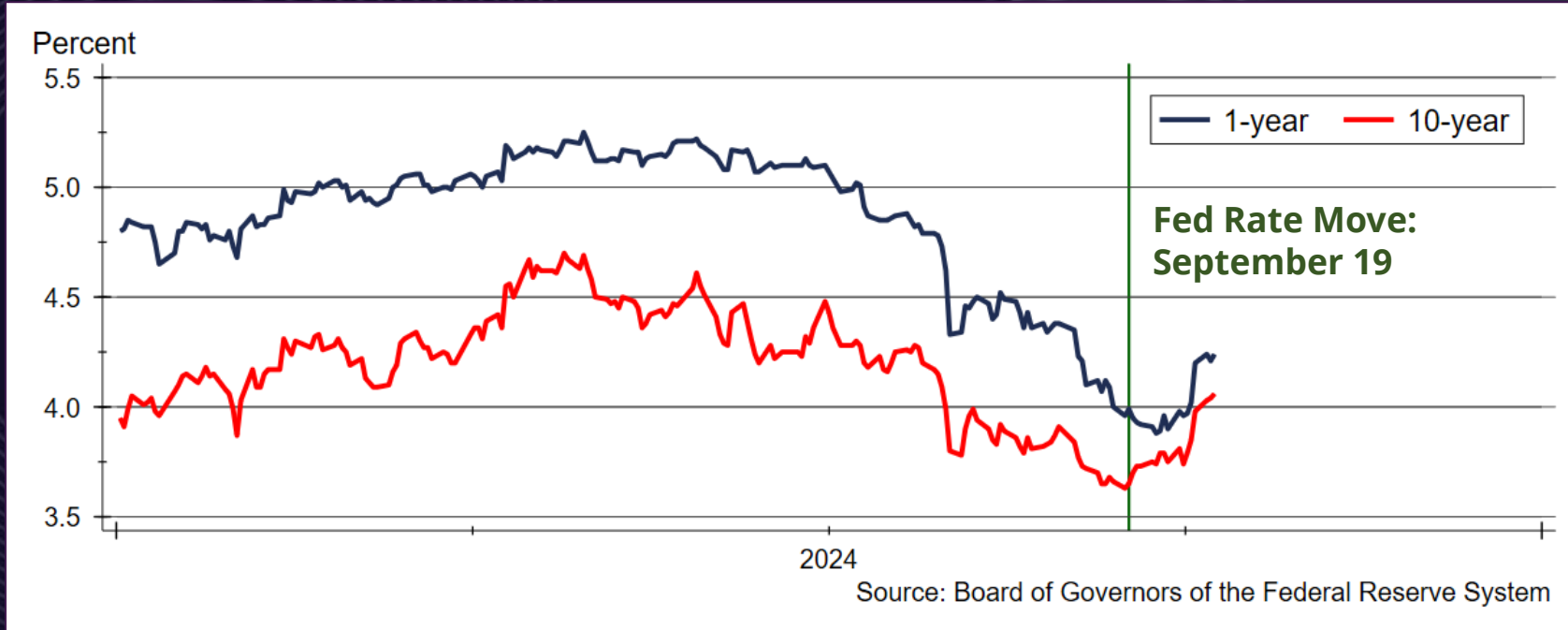
Treasury Rates Following Fed Move



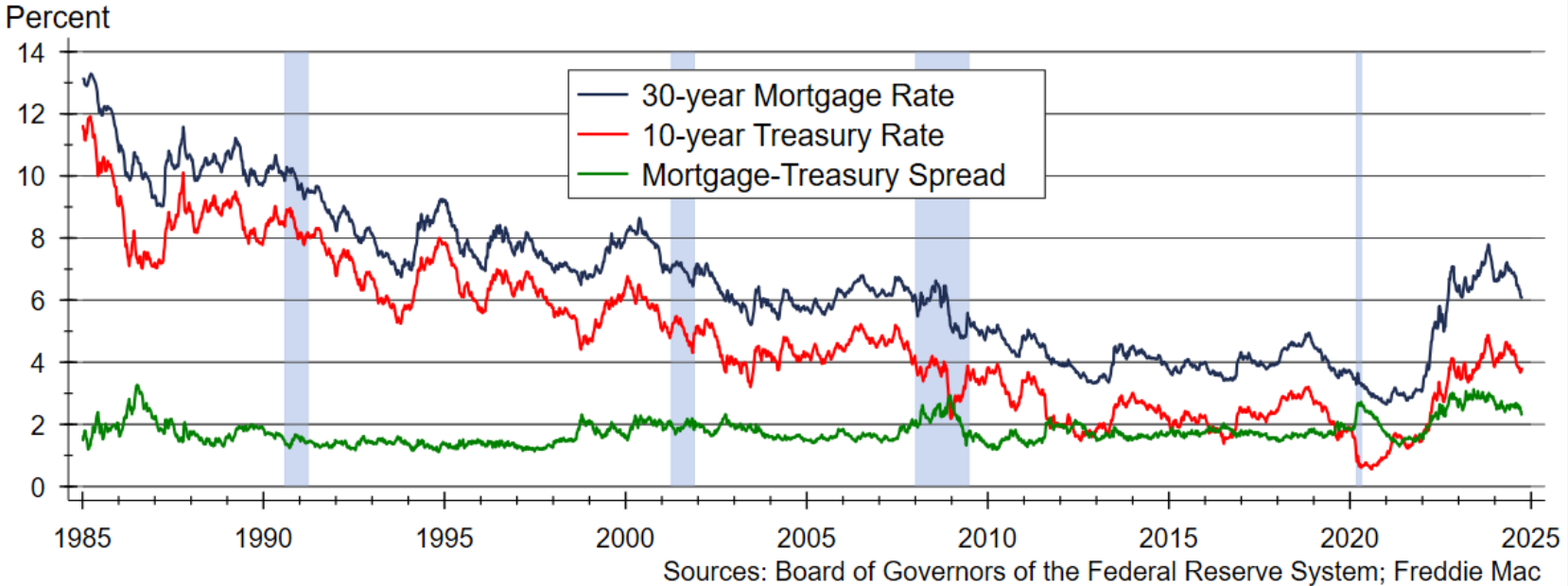
Source: Board of Governors of the Federal Reserve System

PITTSBURGH

Treasury Rates Following Fed Move and after Jobs Report

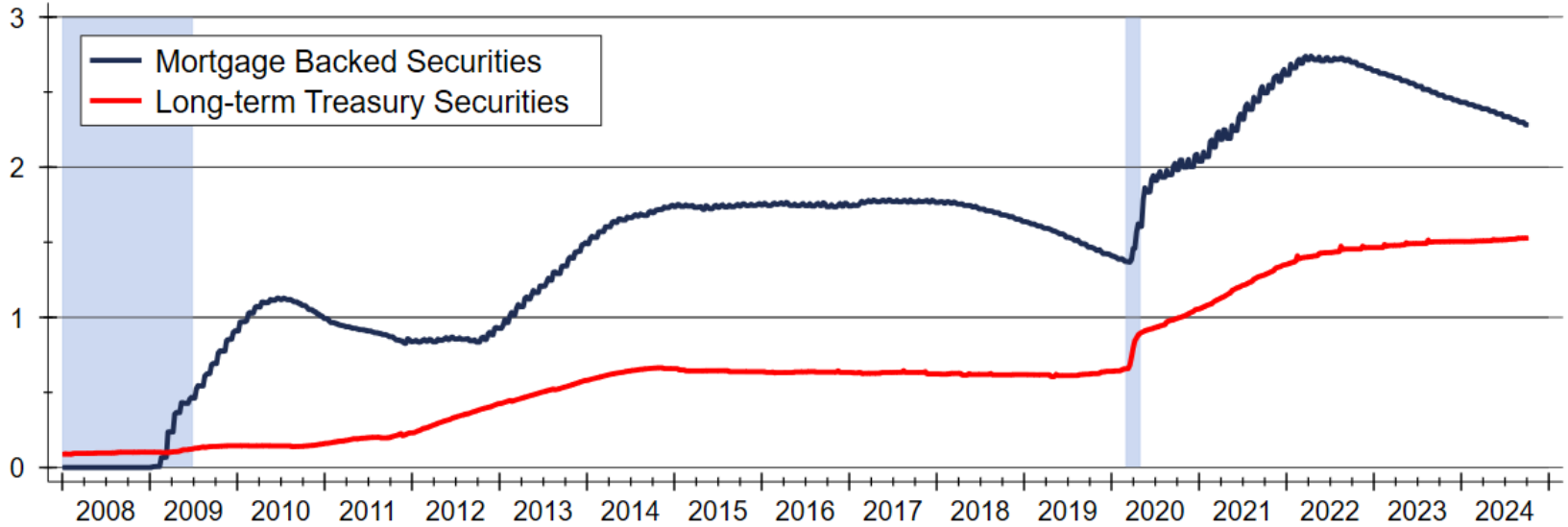


Mortgage Risk Premium Remains Higher than Normal



Federal Reserve is Reducing Its MBS Portfolio

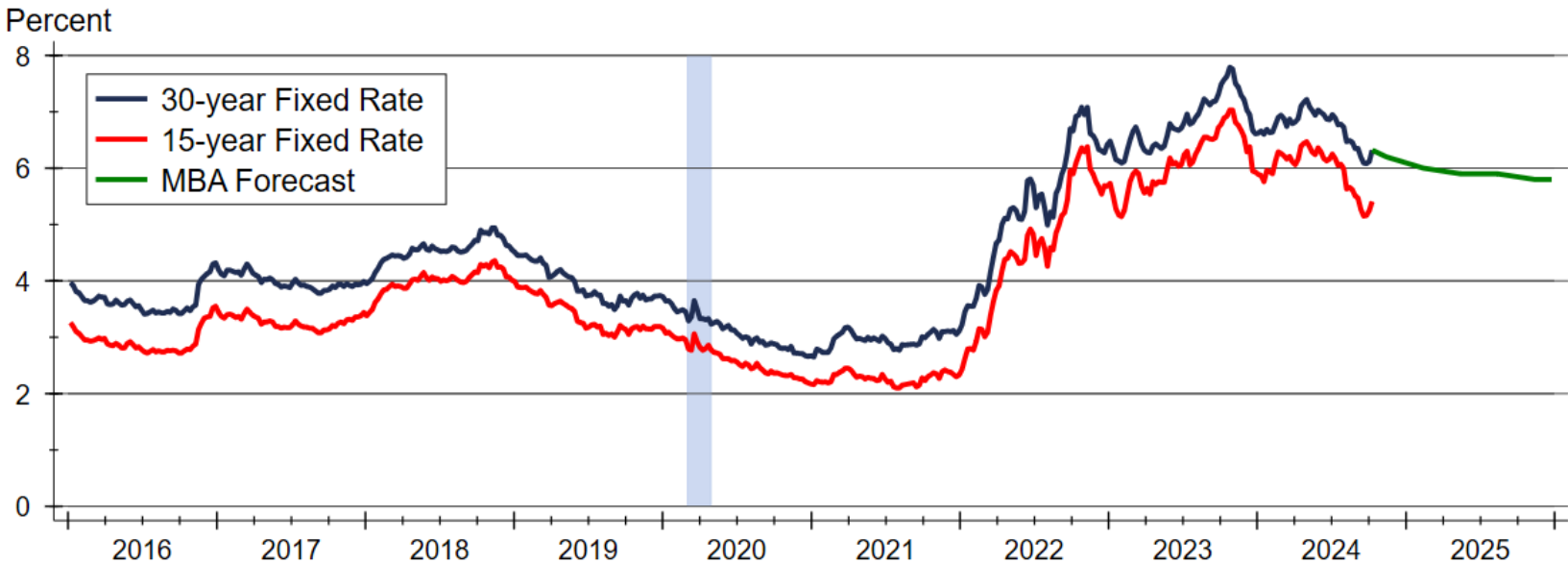
Trillions of Dollars



Source: Federal Reserve Board of Governors

PITTSBURG

MBA Mortgage Rate Forecast

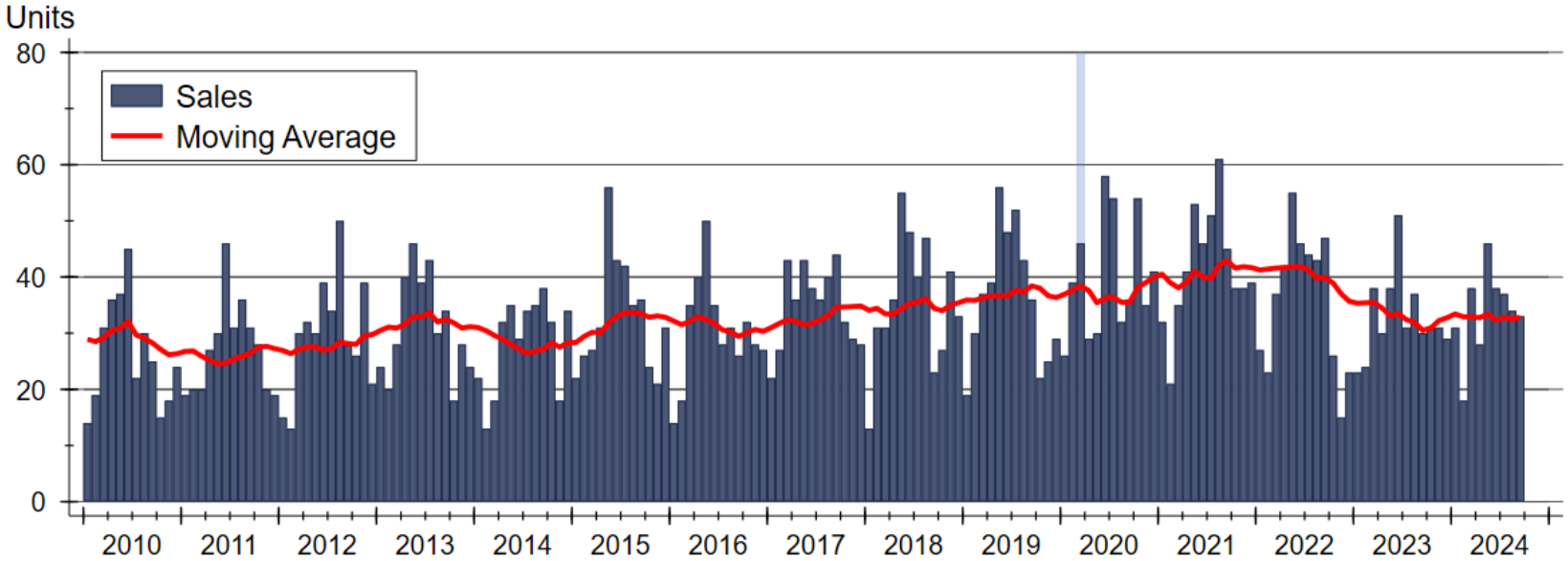


Sources: Freddie Mac; Mortgage Bankers Association



PITTSBURG

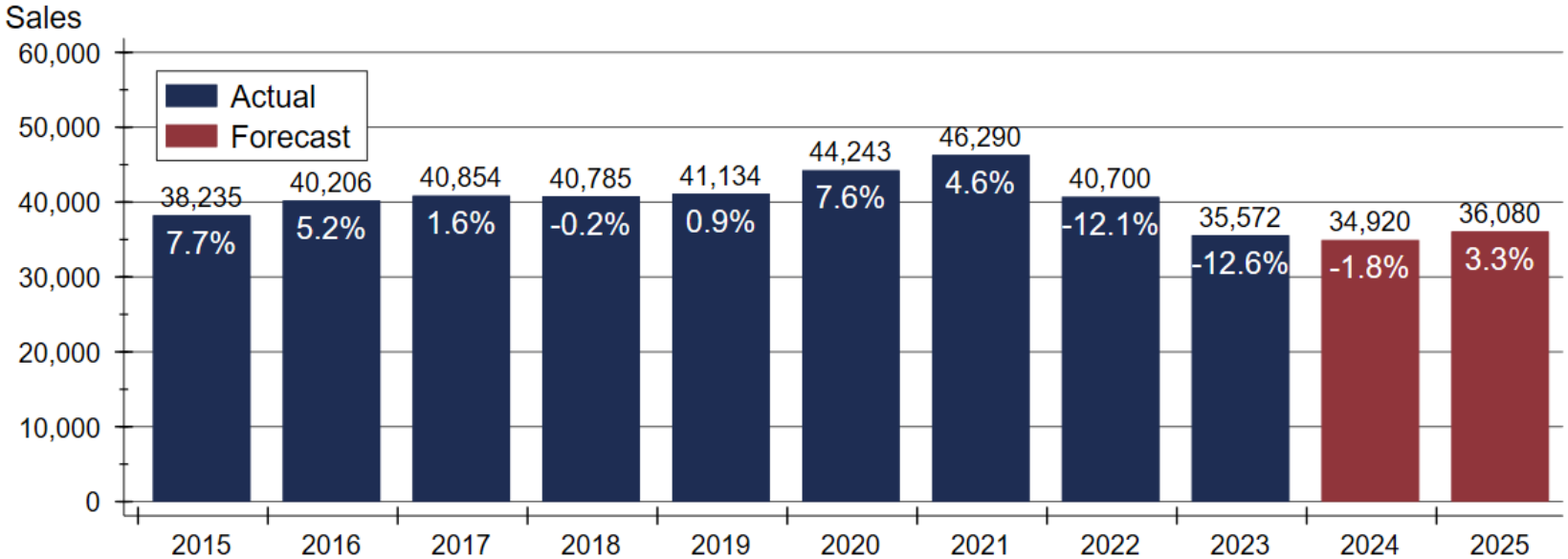
Crawford County Home Sales Activity



Source: Participating Kansas REALTOR® MLS Systems

PITTSBURG

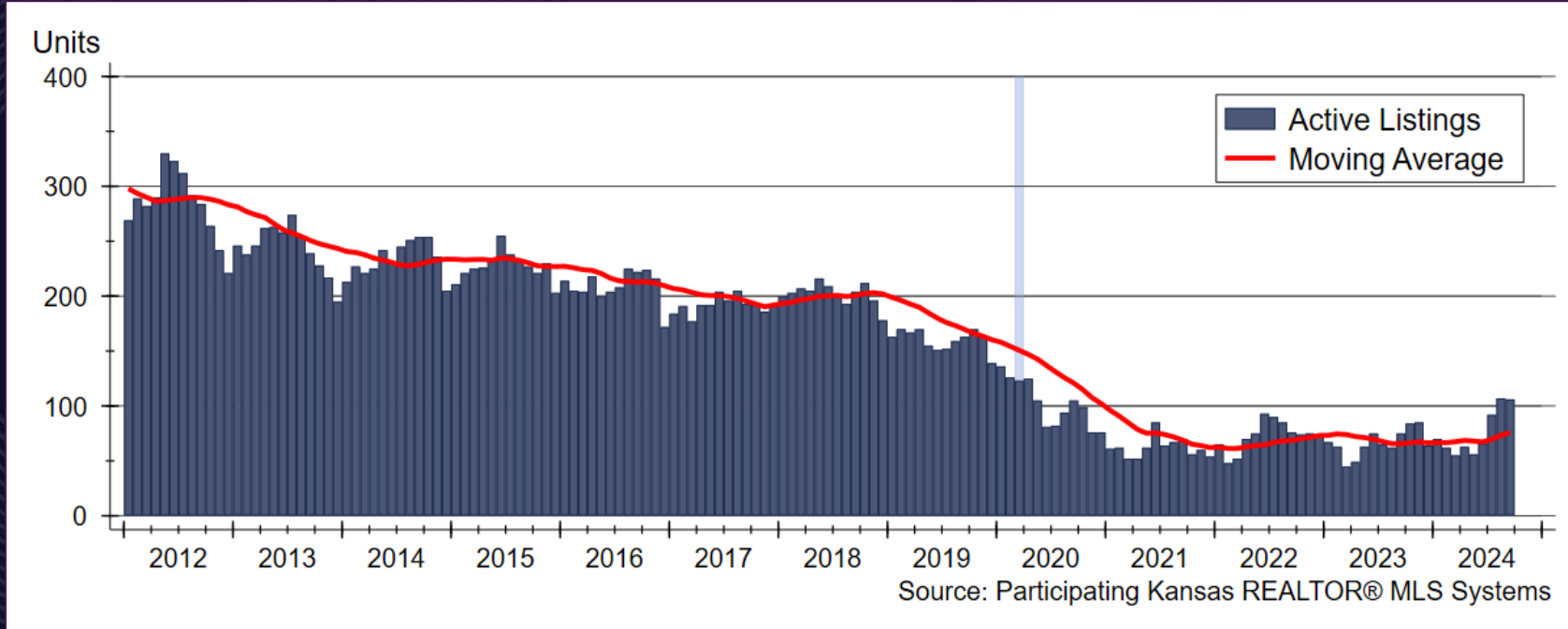
Kansas Home Sales Forecast



Sources: WSU Center for Real Estate and participating Kansas REALTOR® MLS systems



Crawford County Active Listings

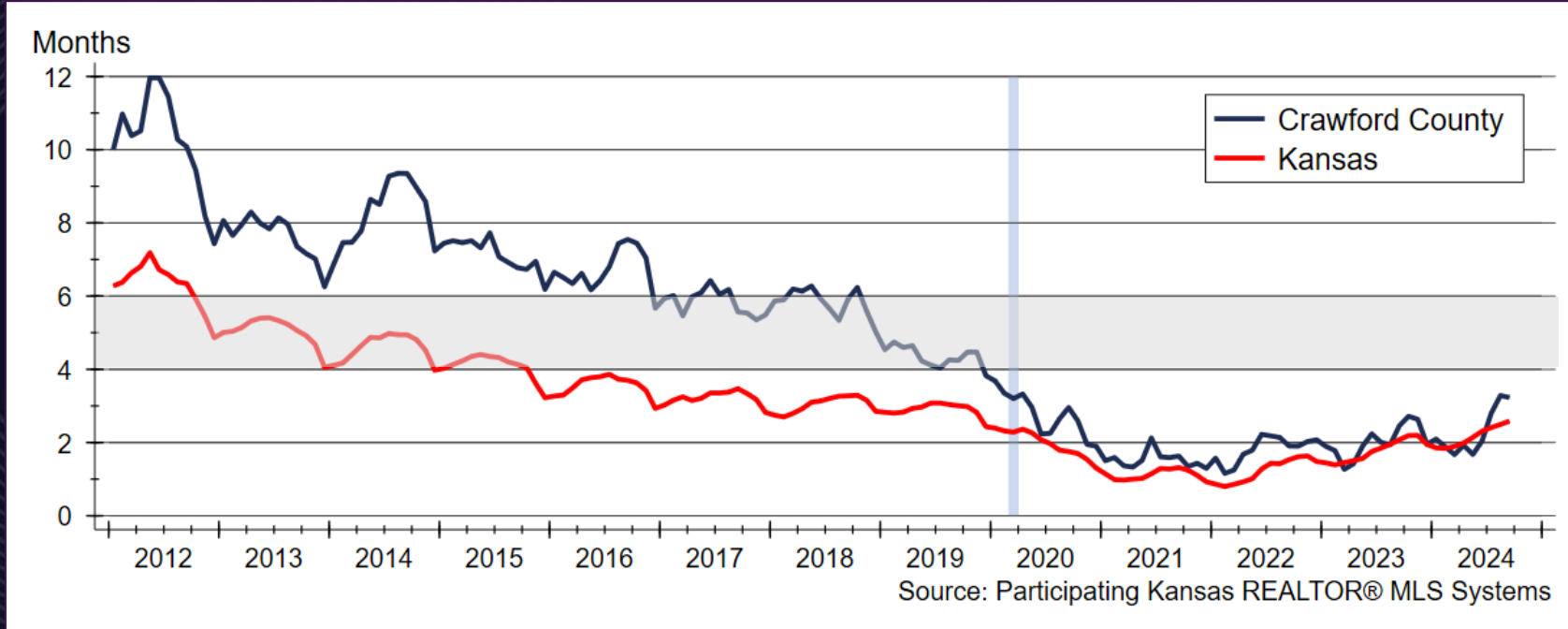


Source: Participating Kansas REALTOR® MLS Systems



PITTSBURG

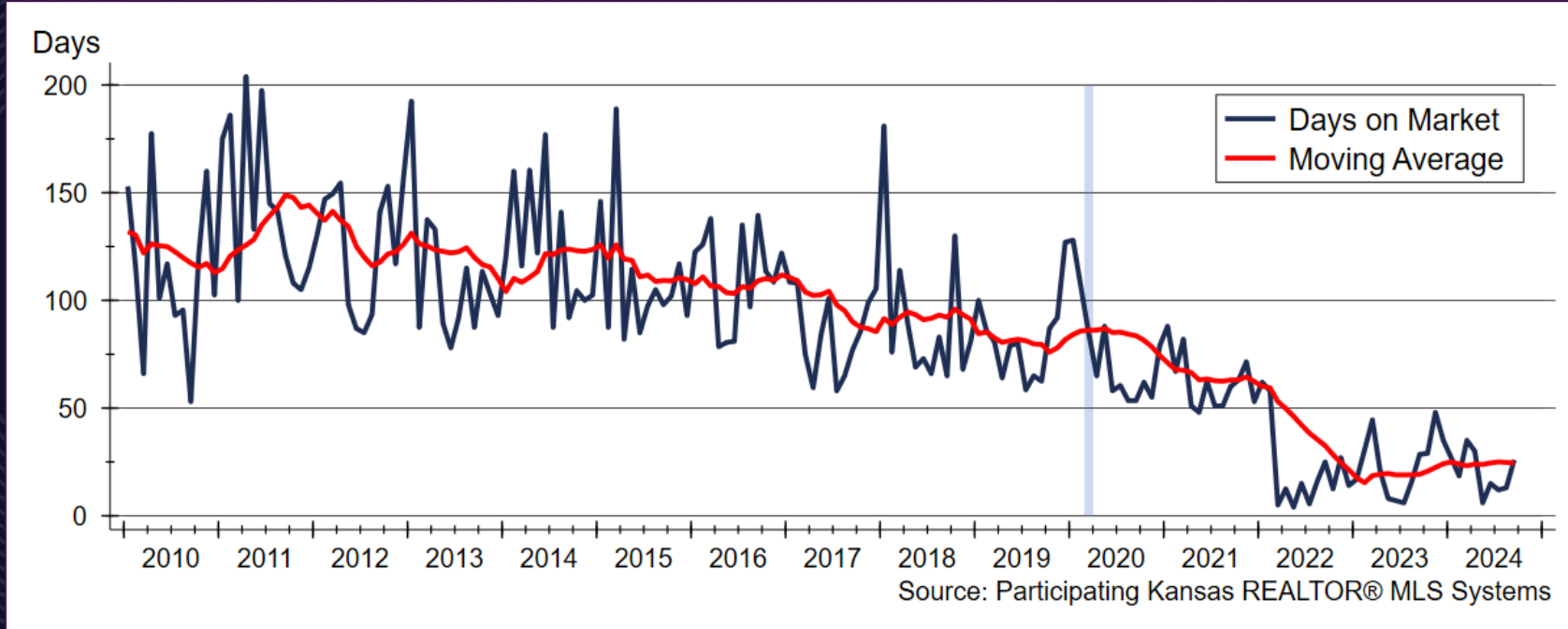
Inventory of Homes Available for Sale





PITTSBURG

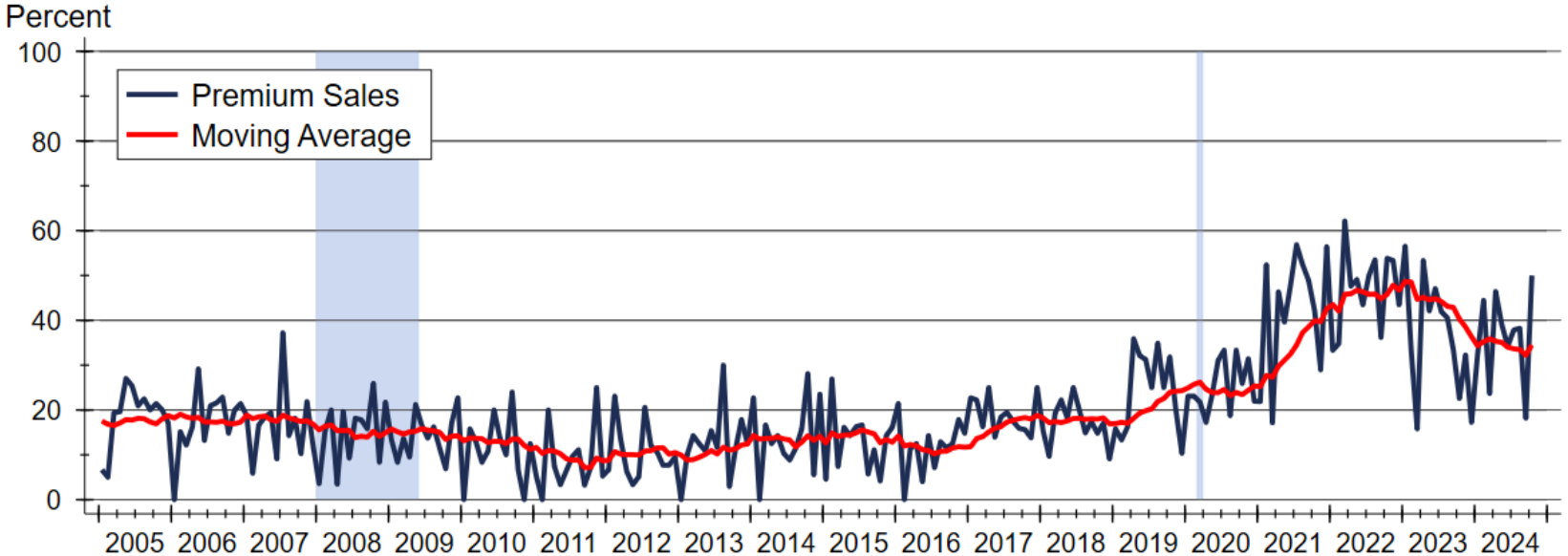
Crawford County Median Days On Market





PITTSBURG

Crawford County Premium Sales

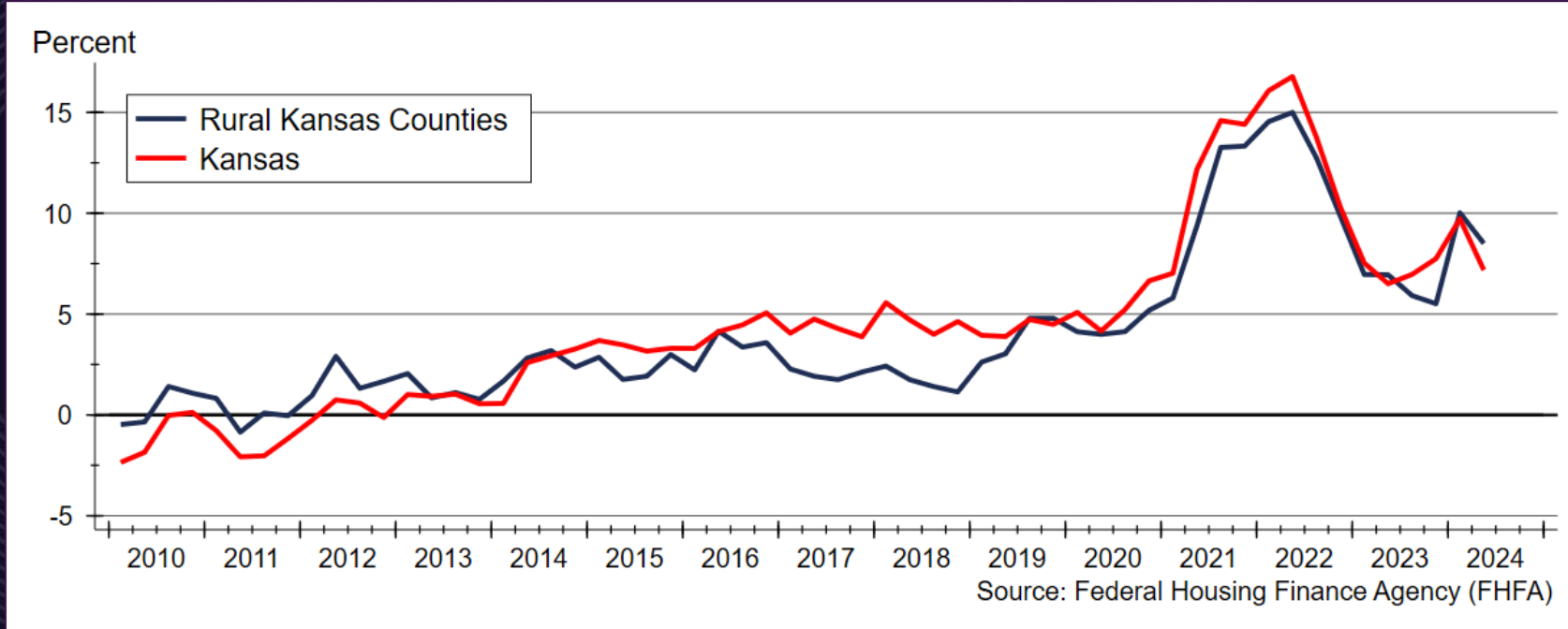


Source: Participating Kansas REALTOR® MLS Systems



PITTSBURG

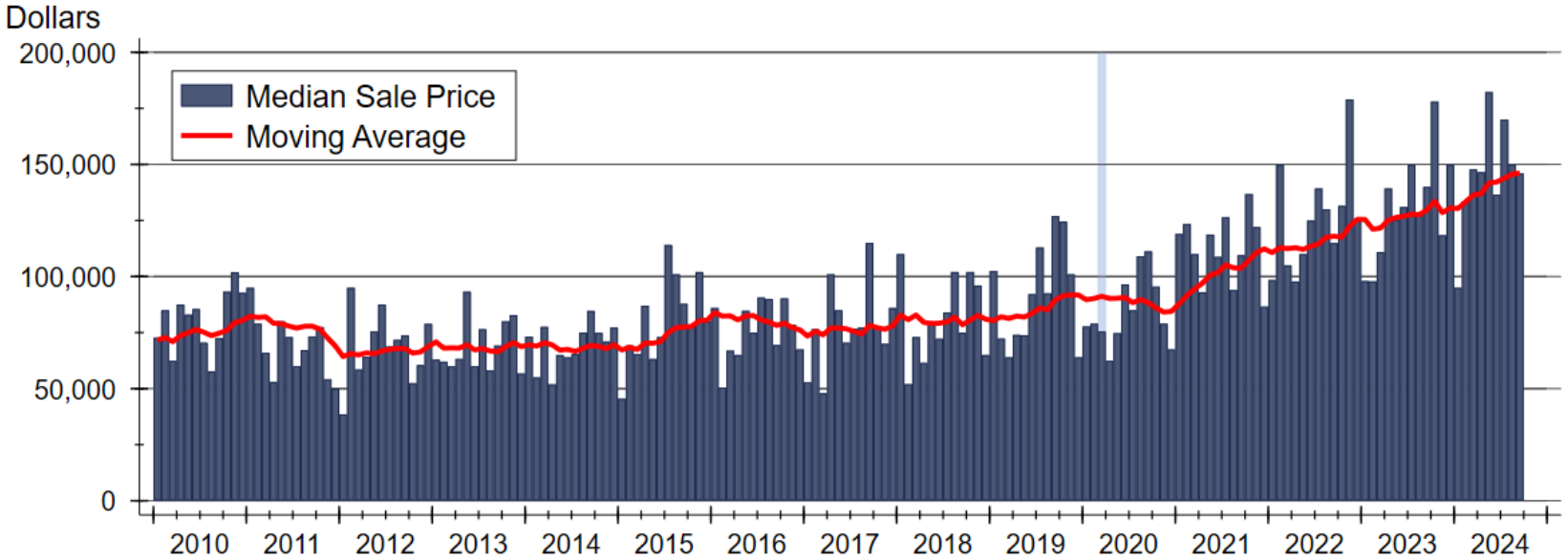
Home Price Appreciation Continues to be Strong





PITTSBURG

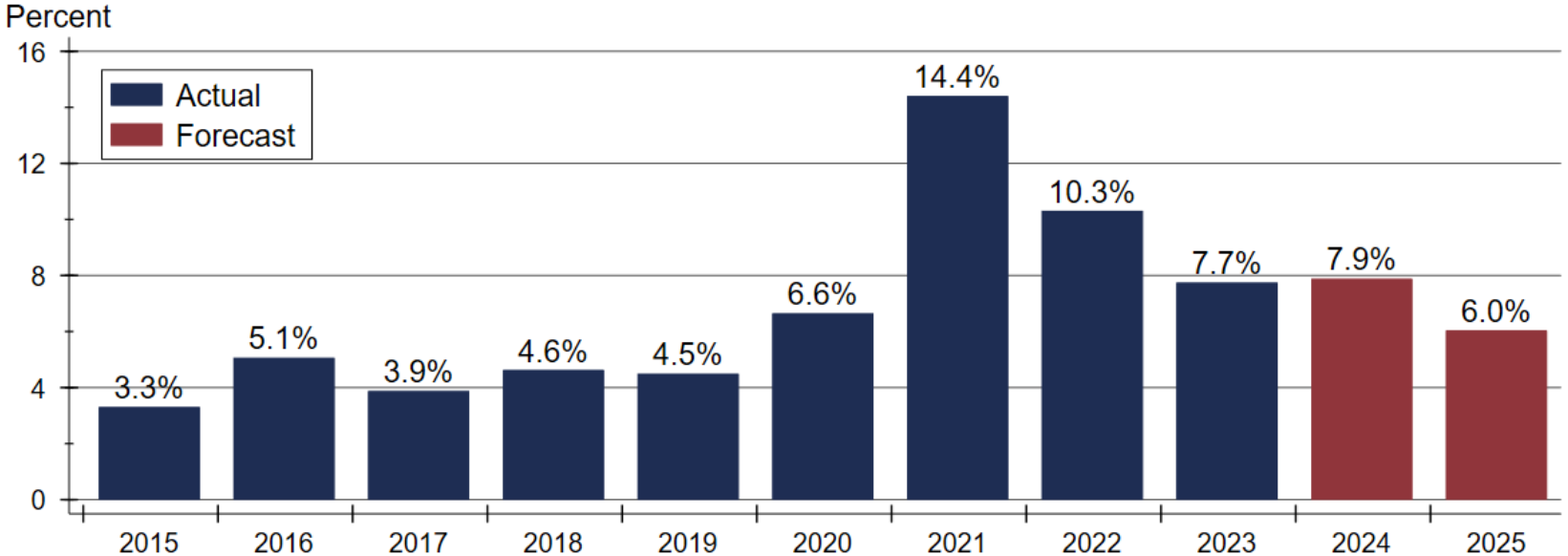
Crawford County Median Sale Price



Source: Participating Kansas REALTOR® MLS Systems

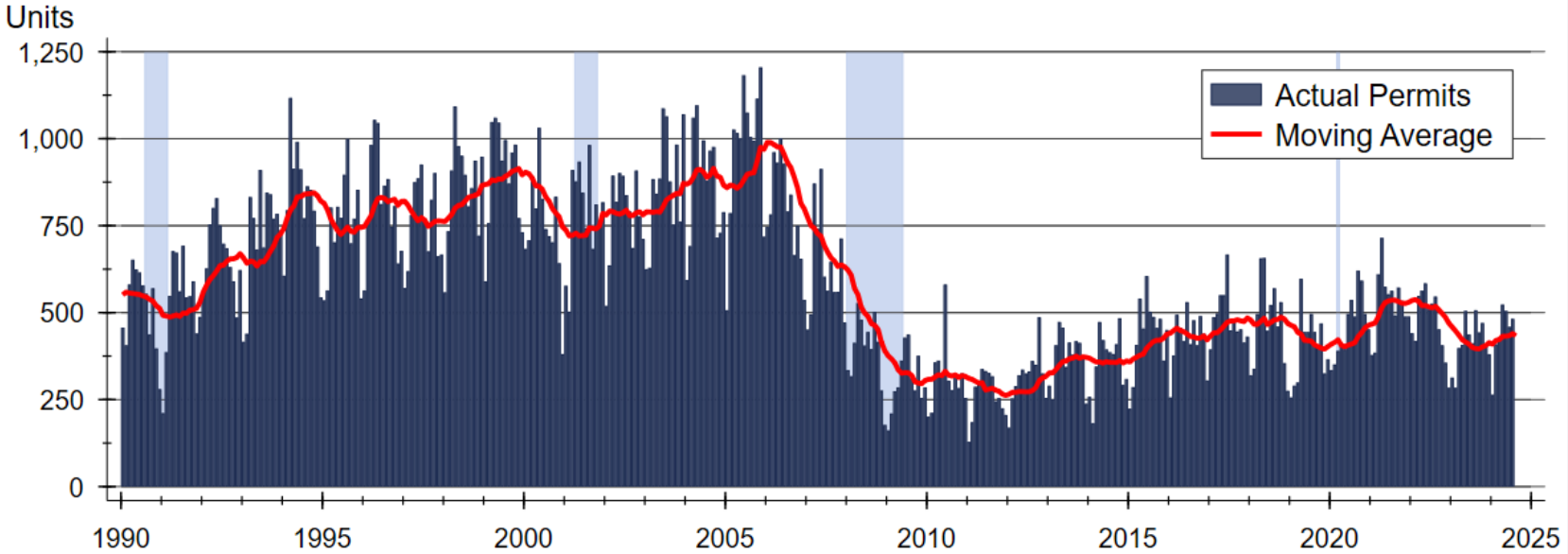


Kansas Home Price Appreciation Forecast



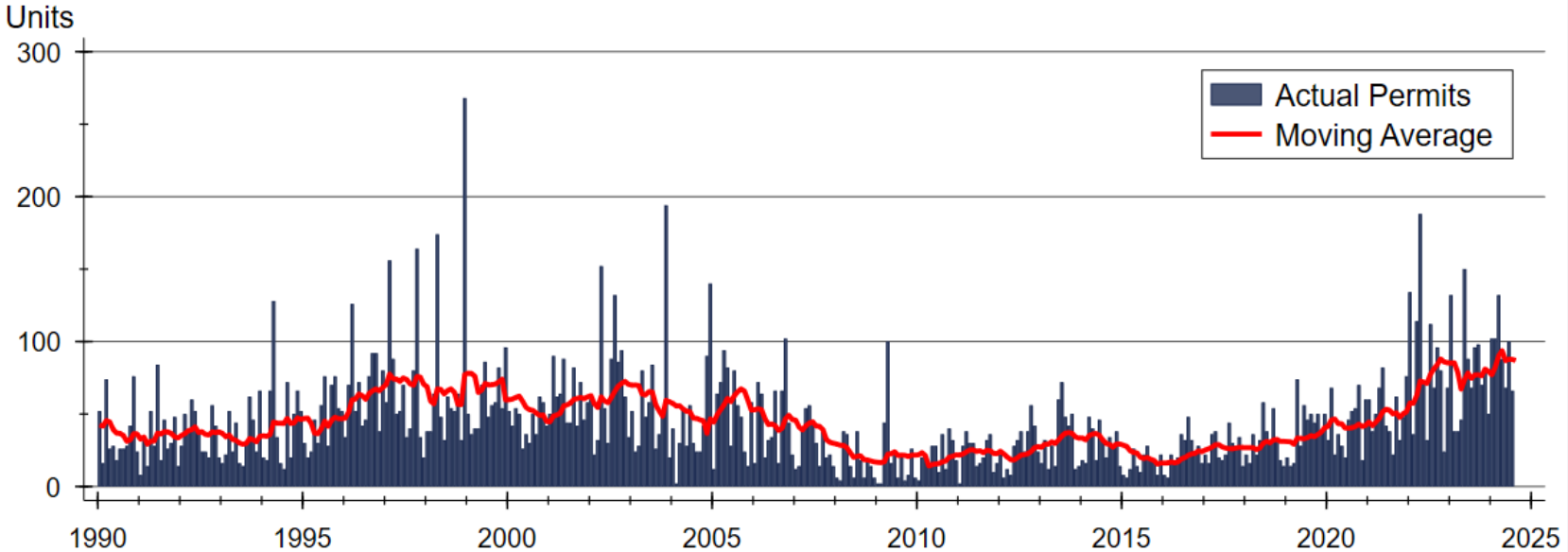
Sources: WSU Center for Real Estate and Federal Housing Finance Agency

Kansas Single-Family Building Permits



Source: U.S. Bureau of the Census

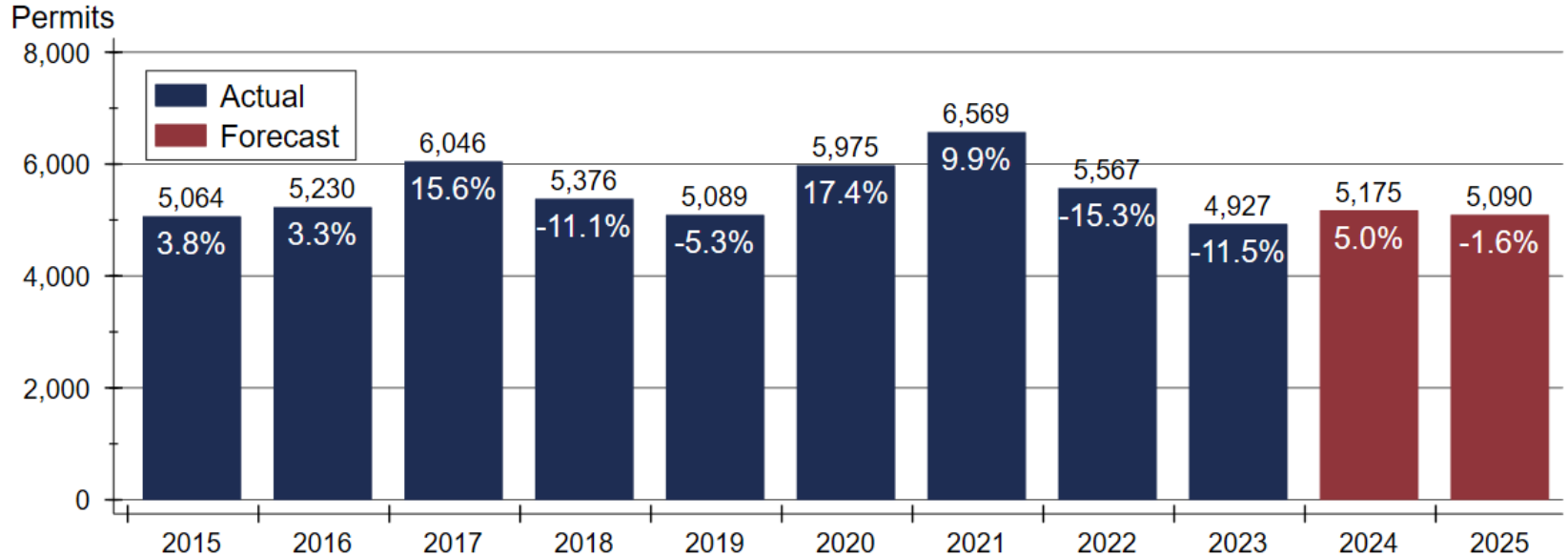
Kansas Two-Family Building Permits



Source: U.S. Bureau of the Census

PITTSBURG

Kansas Single-Family Home Construction Forecast



Sources: WSU Center for Real Estate and U.S. Bureau of the Census

2025 Kansas Housing Forecast

	2022 <u>Actual</u>	2023 <u>Actual</u>	2024 <u>Forecast</u>	2025 <u>Forecast</u>
Total Home Sales	40,700 units -12.1%	35,572 units -12.6%	34,920 units -1.8%	36,080 units +3.3%
SF Building Permits	5,567 units -15.3%	4,927 units -11.5%	5,175 units +5.0%	5,090 units -1.6%
Home Price Appreciation	+10.3%	+7.7%	+7.9%	+6.0%

2025 Major Markets Forecast

	<u>KC</u>	<u>Lawrence</u>	<u>Manhattan</u>	<u>Topeka</u>	<u>Wichita</u>
Total Home Sales	36,300 units +4.4%	1,080 units -0.9%	1,800 units +11.1%	2,840 units -0.7%	9,550 units +2.0%
SF Building Permits	4,465 units +0.7%	235 units -2.1%	255 units +2.0%	365 units +2.8%	1,285 units +4.9%
Home Price Appreciation	+5.6%	+3.4%	+4.9%	+4.2%	+7.7%

PITTSBURG

2025 Crawford County Outlook Sponsor



Security 1st Title



PITTSBURG





CRAWFORD

2025 HOUSING
OUTLOOK

Full Circle

Dr. Stanley D. Longhofer
October 15, 2025