

Wichita Housing Markets in Transition

RE/MAX Premier
September 20, 2022

Dr. Stanley D. Longhofer
WSU Center for Real Estate

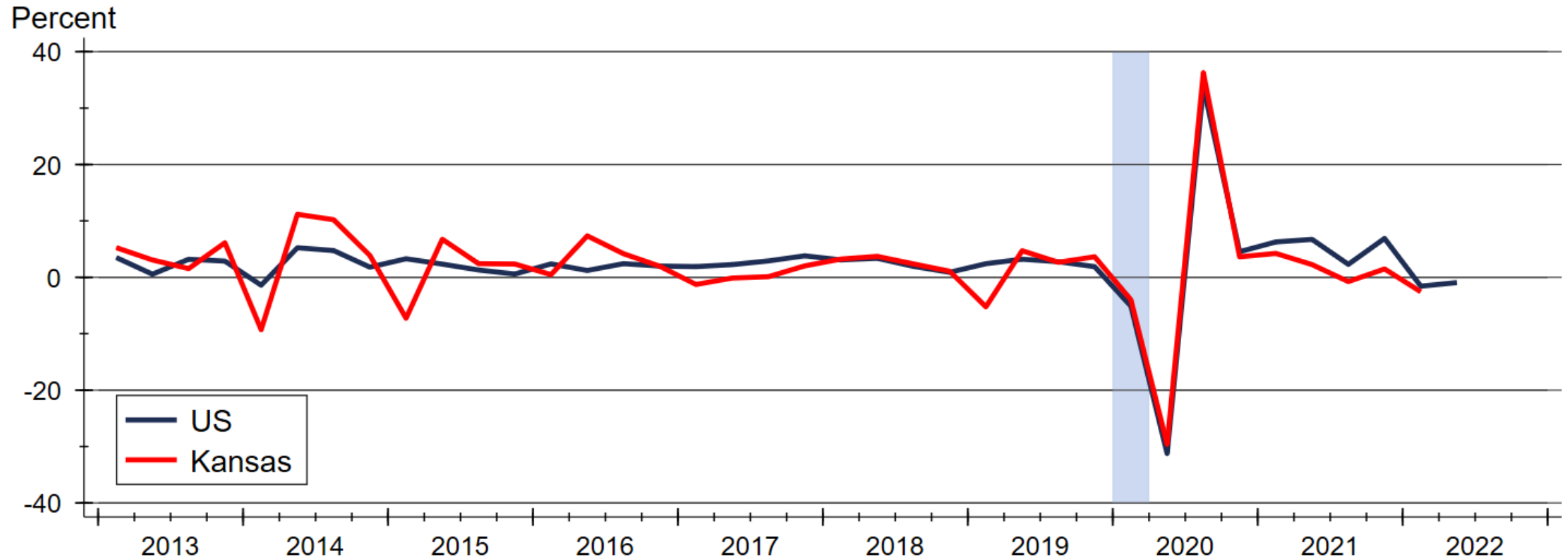


WICHITA STATE
UNIVERSITY
W. FRANK BARTON
SCHOOL OF BUSINESS



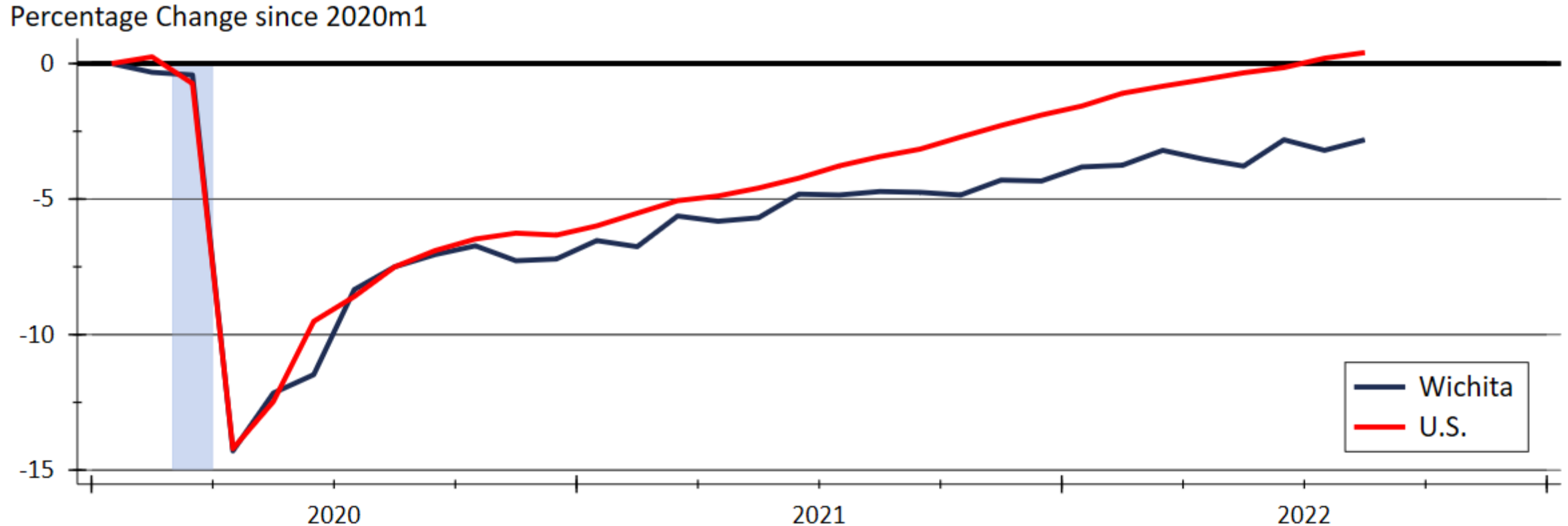
Quarterly Gross Domestic Product Growth

Are We in a Recession?



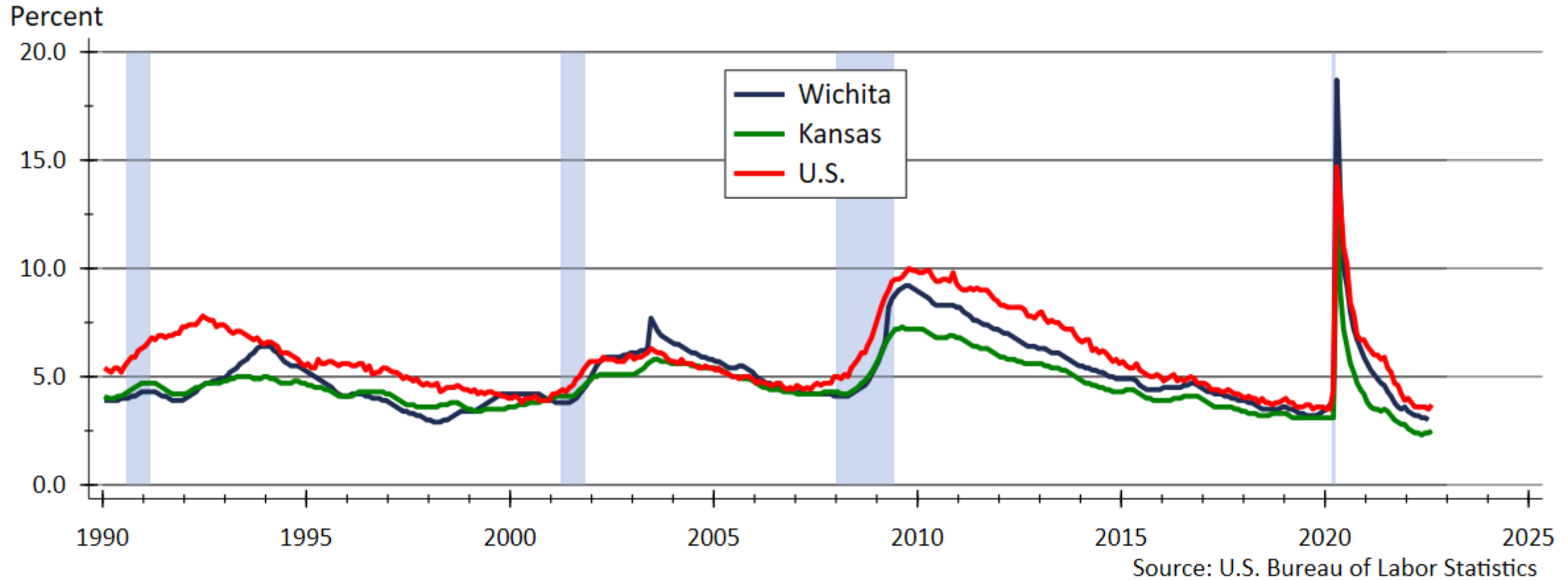
Source: Bureau of Economic Analysis

Change in Employment since January 2020

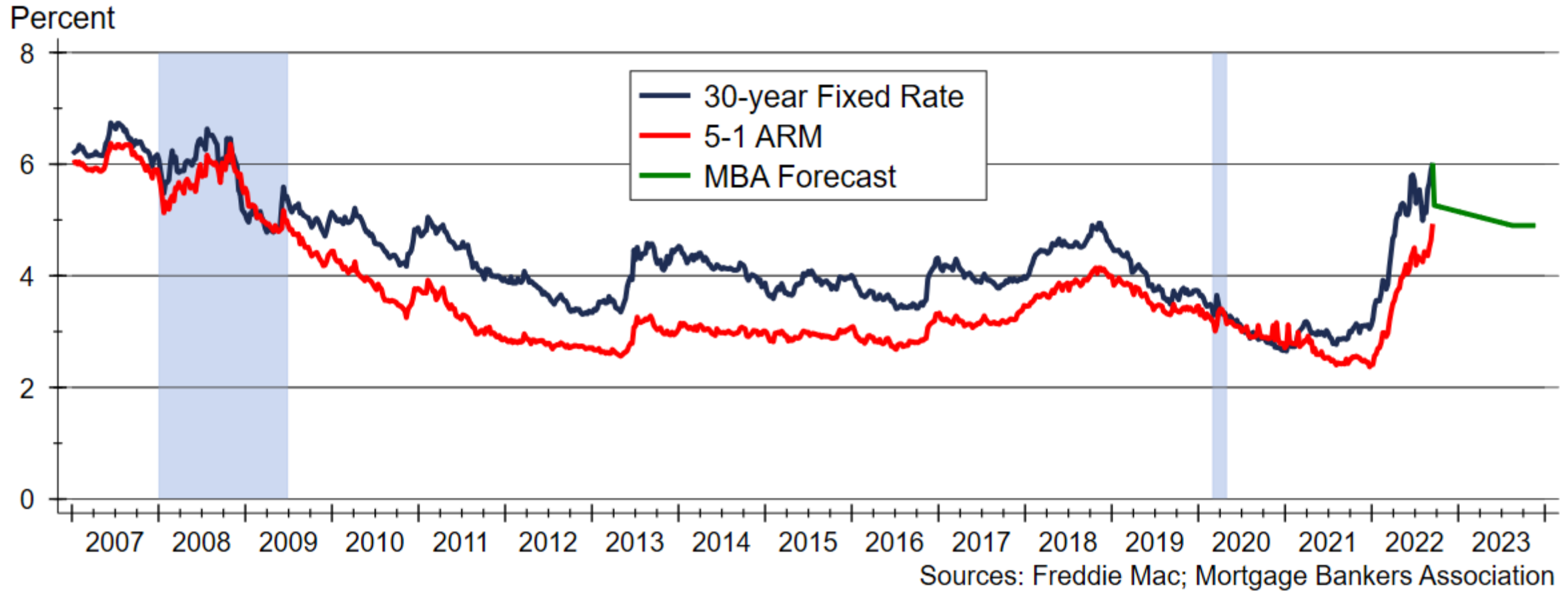


Source: U.S. Bureau of Labor Statistics
Index created from seasonally adjusted data

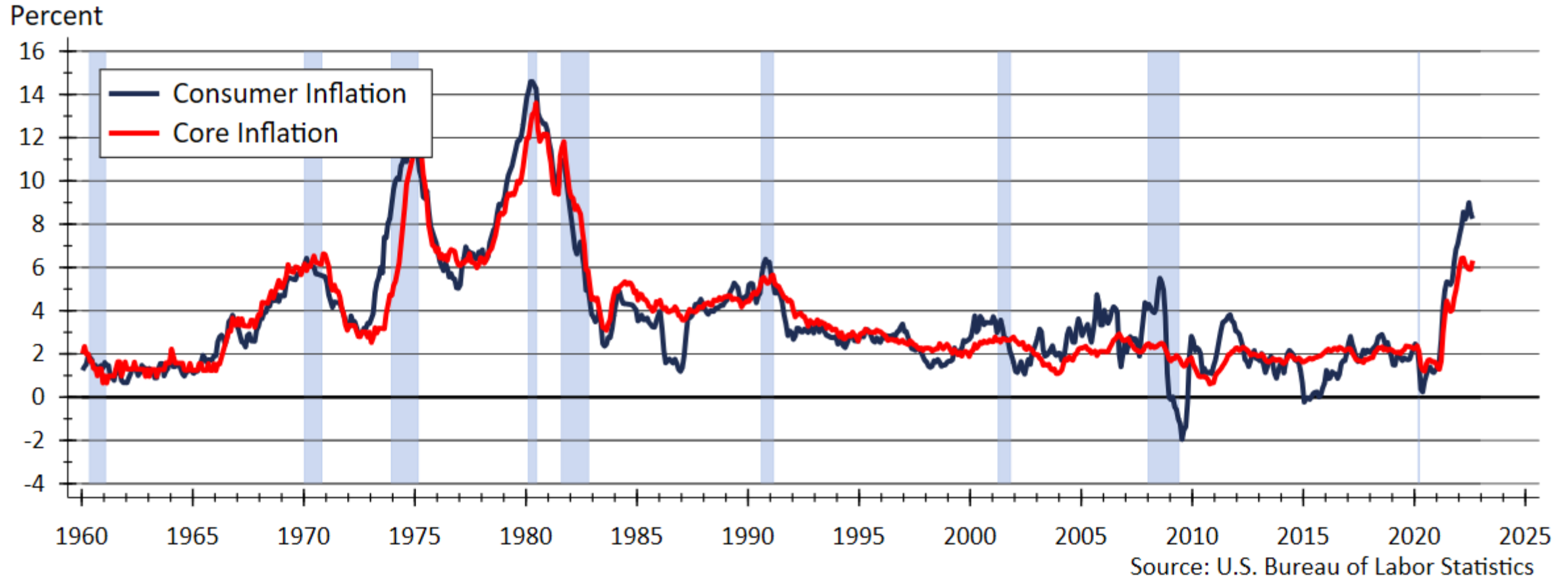
Unemployment Rate is near Historic Low



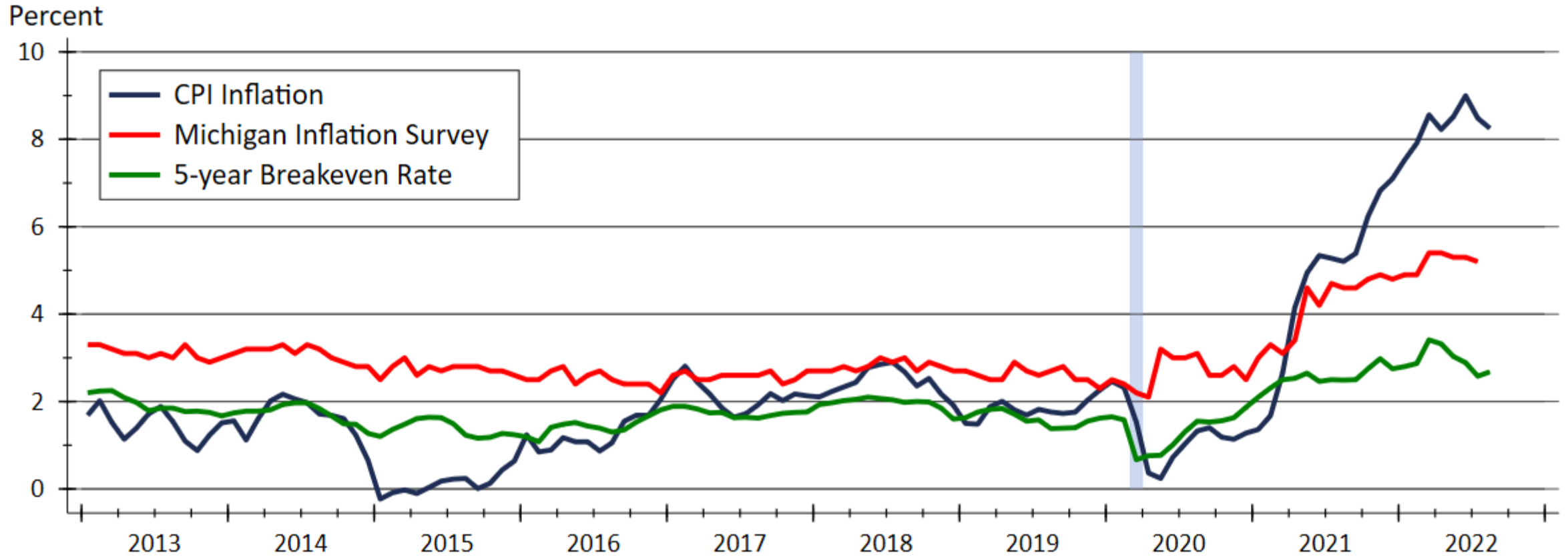
MBA Forecasts that Mortgage Rates will Fall



CPI Inflation since 1960

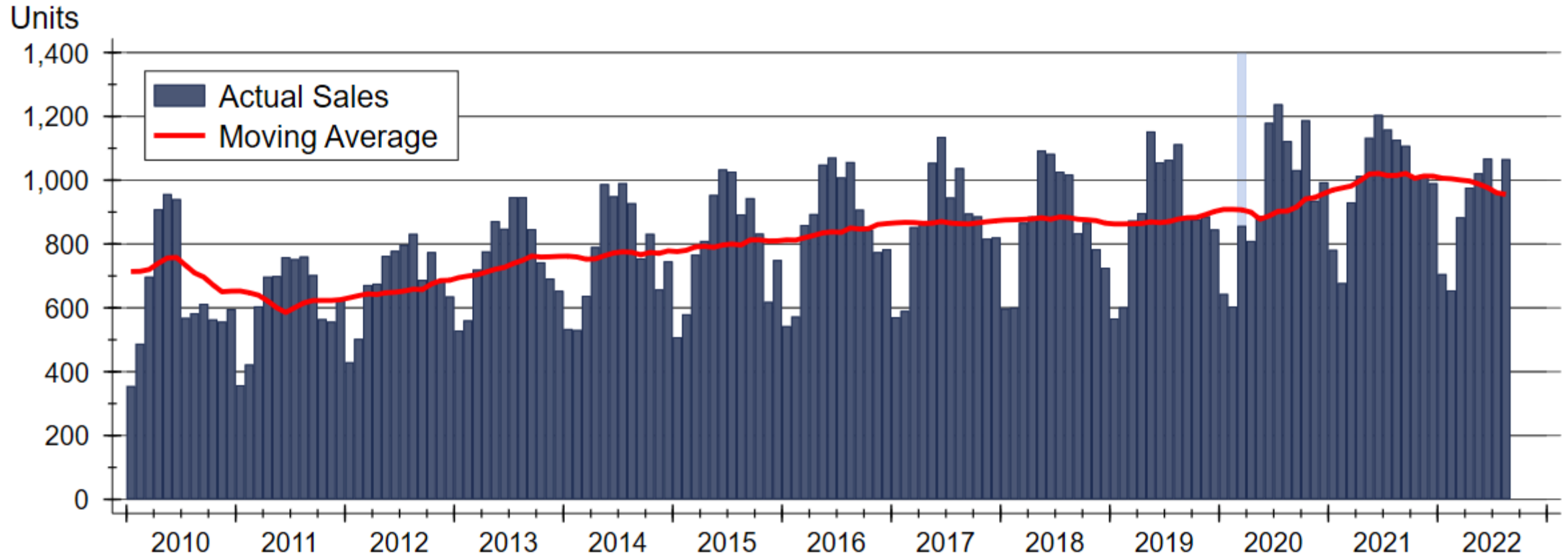


Inflation Expectations

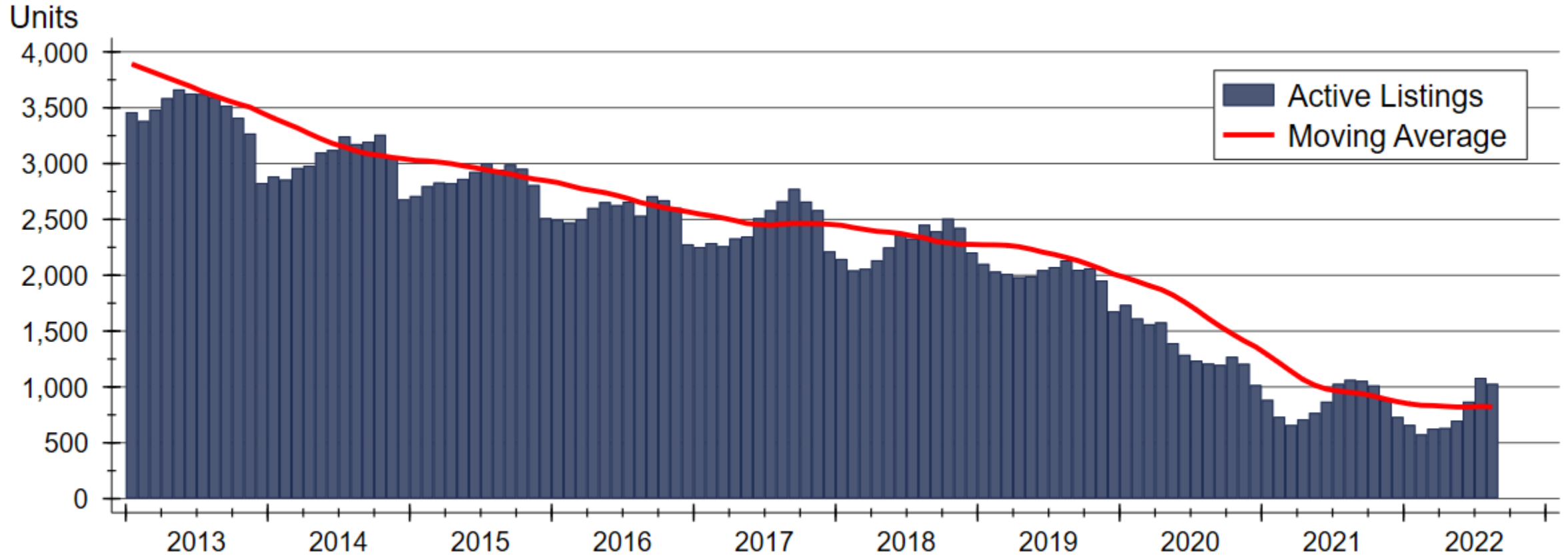


Sources: BLS; Federal Reserve Bank of St. Louis; University of Michigan

South Central Kansas Home Sales Activity

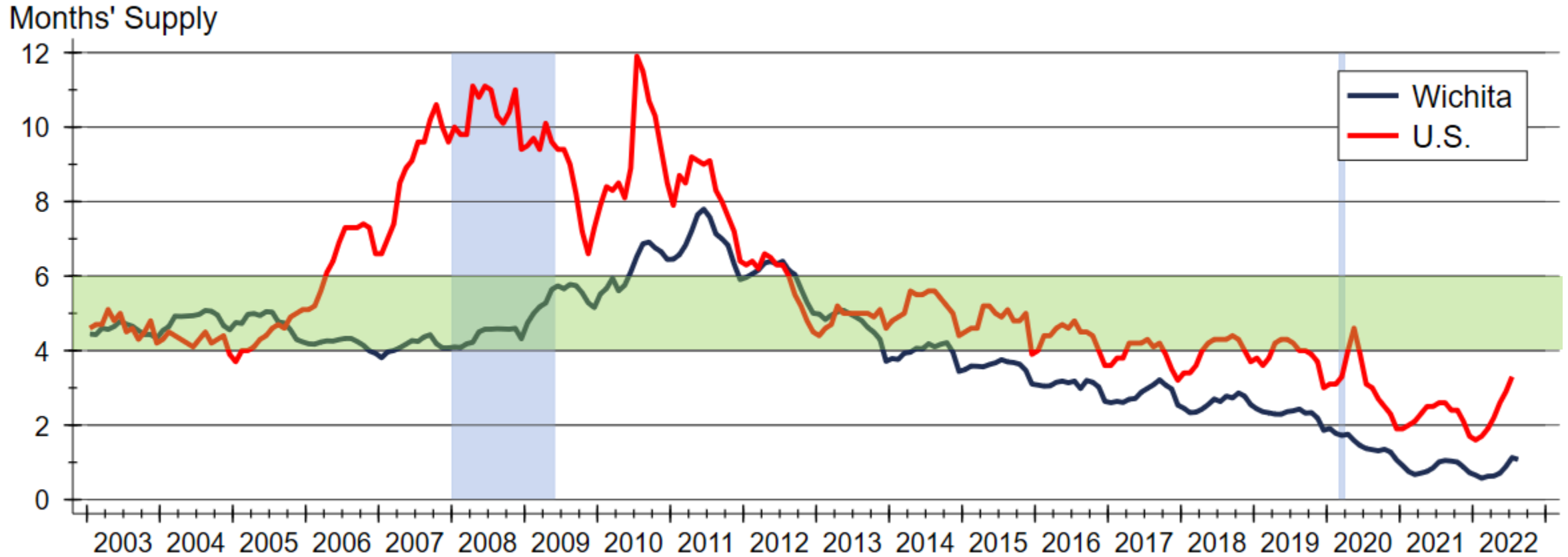


Homes Available for Sale in SC Kansas



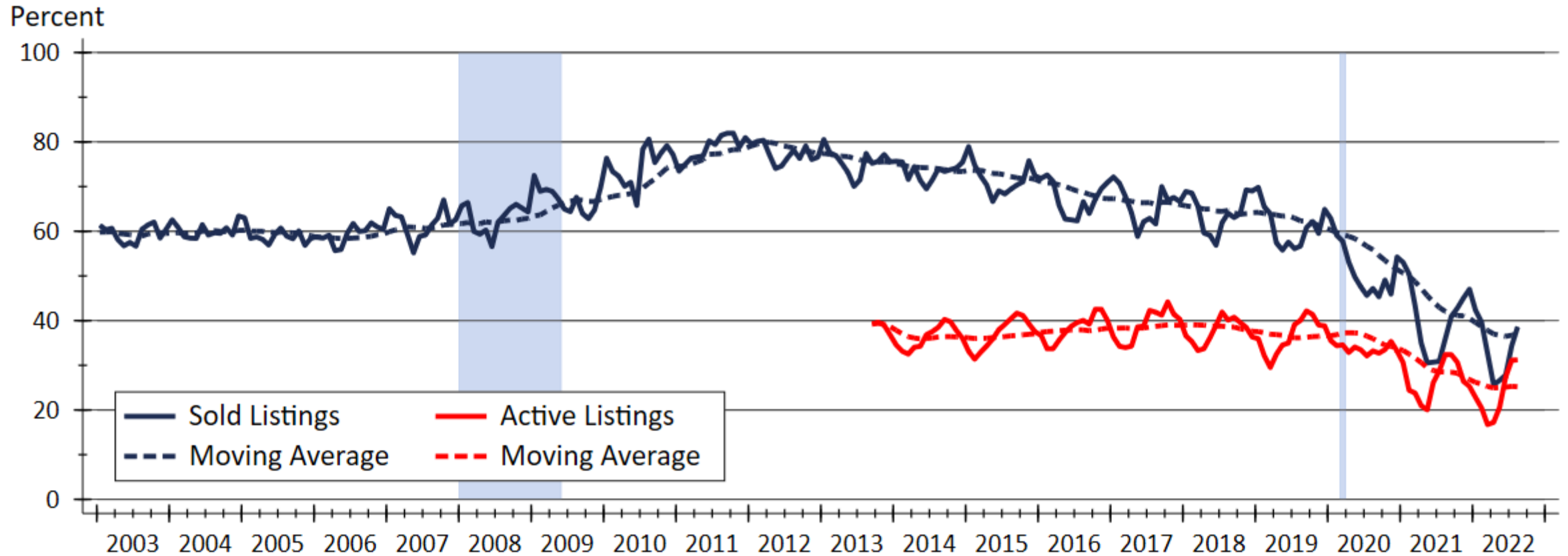
Source: South Central Kansas MLS MLS

Months' Supply of Homes for Sale



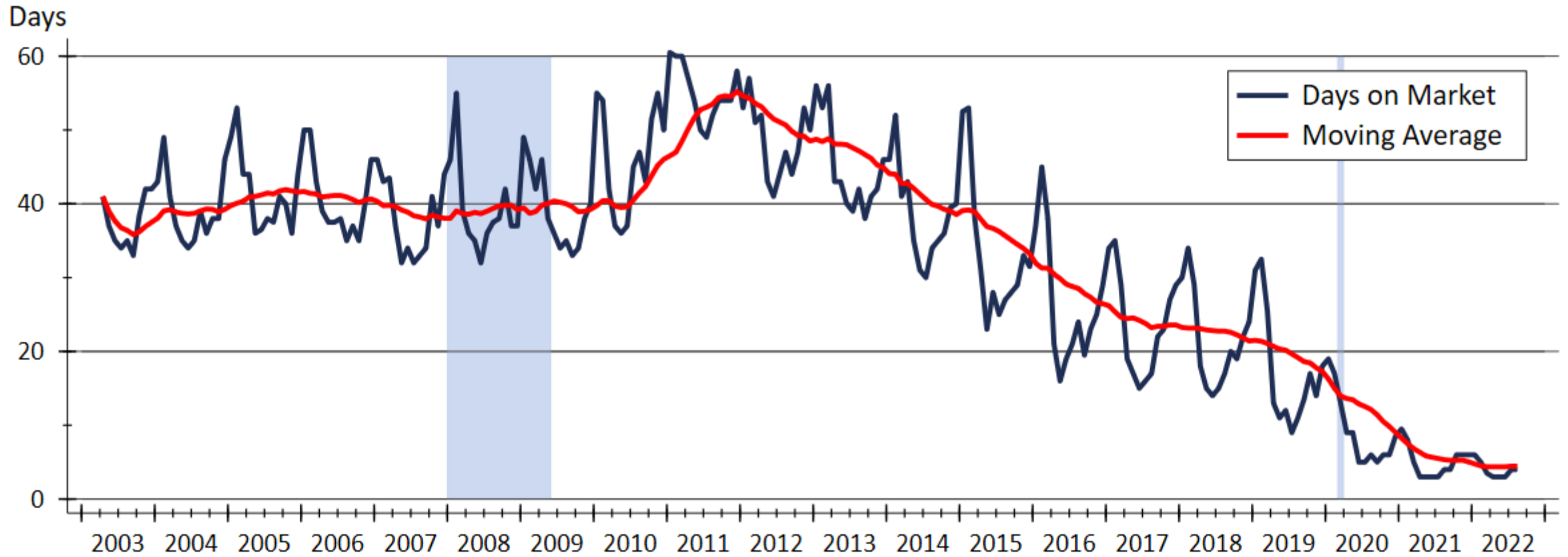
Sources: National Association of Realtors® and South Central Kansas MLS

Fraction of Listings Discounted from Original Asking Price



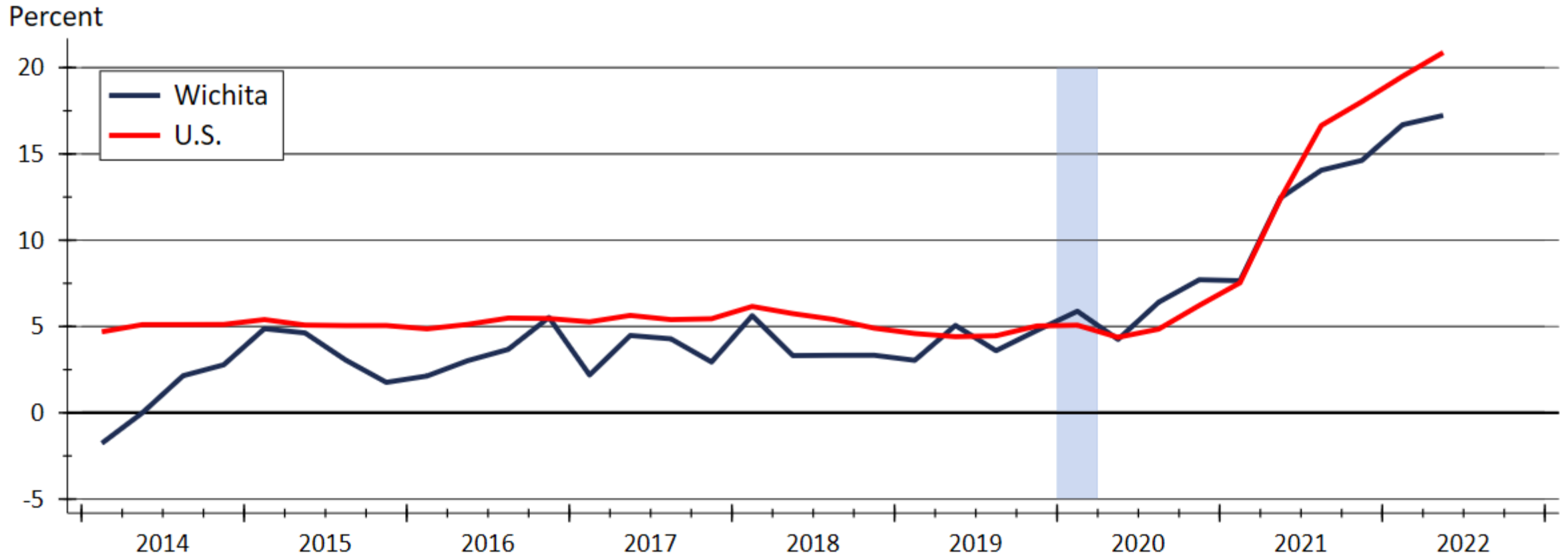
Source: CRE using data from MLS

Median Days on Market in Kansas



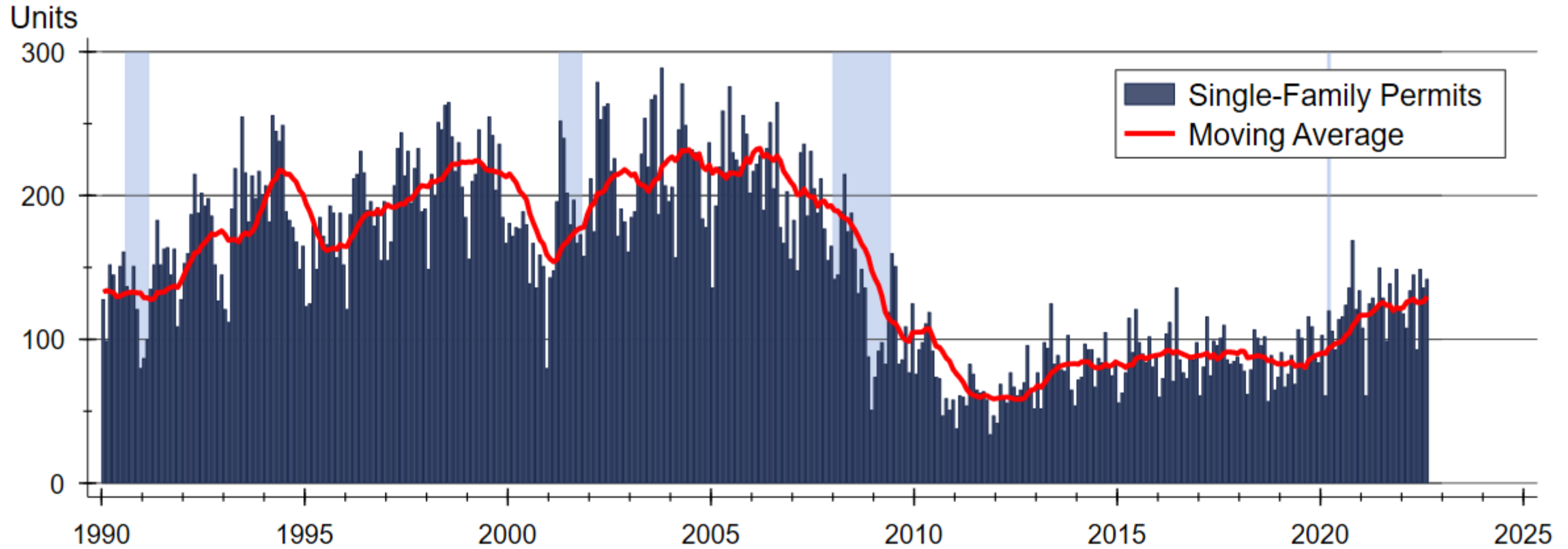
Source: South Central Kansas MLS

Home Price Appreciation



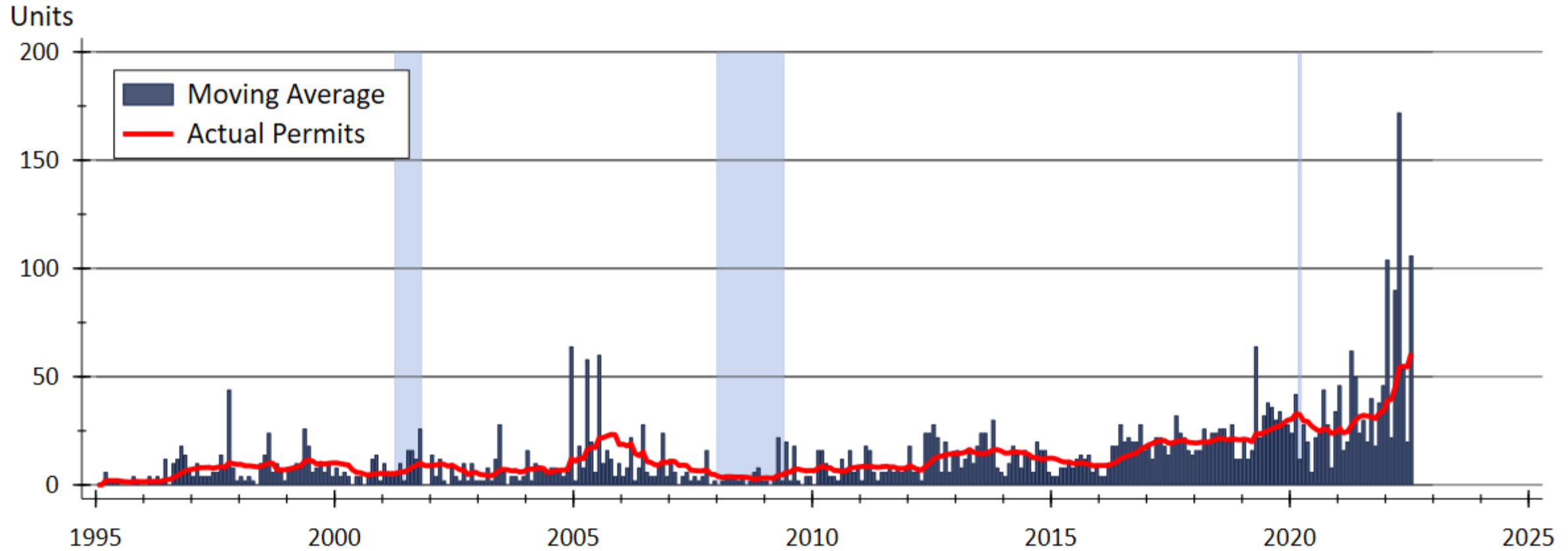
Source: Federal Housing Finance Agency (FHFA)

Wichita Area Single-family Building Permits



Source: Wichita Area Builders Association

Wichita MSA Two-family Building Permits



WSU Center for Real Estate

Laying a Foundation for Real Estate in Kansas

www.wichita.edu/realestate



WICHITA STATE
UNIVERSITY
W. FRANK BARTON
SCHOOL OF BUSINESS

