

KANSAS HOUSING MARKETS FORECAST 2021 SALINE COUNTY HOUSING OUTLOOK

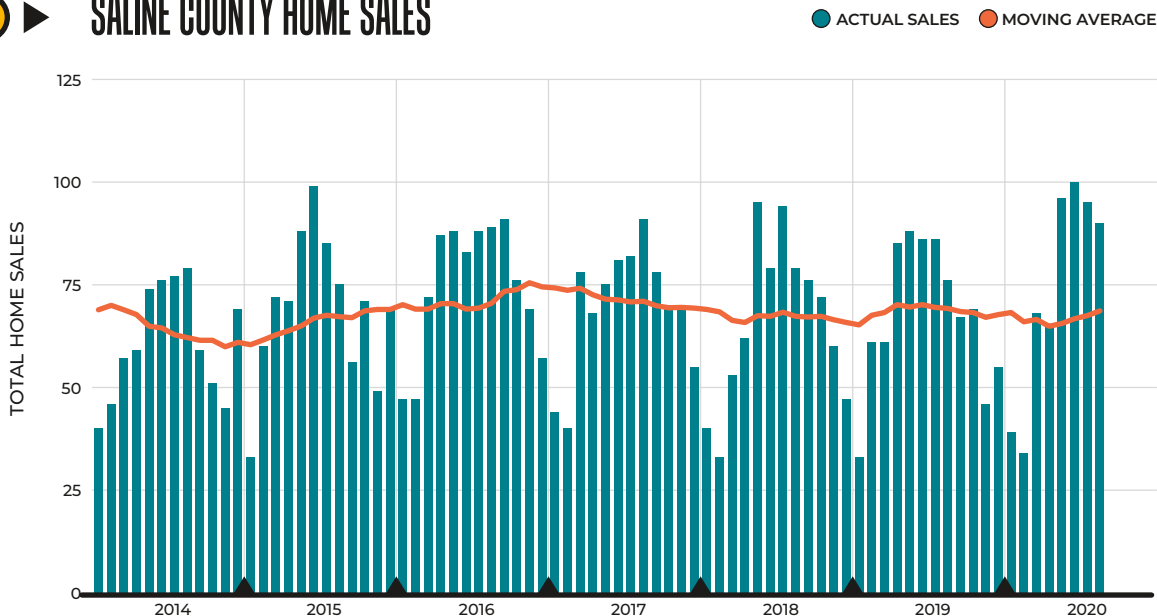
CONNECTIONS. If there's one thing we've learned so far this year, it's how deeply connected we are – physically, electronically, economically, socially. Even while it remains true that “all real estate markets are local,” these connections bind us together across the state.

As we work our way through the effects of the pandemic in the coming year, it is my hope that we are able to restore and enrich the connections that will always matter most, those with our colleagues, friends and loved ones across the community.

Stan Longhofer

Dr. Stanley D. Longhofer
DIRECTOR, WSU CENTER FOR REAL ESTATE
WICHITA.EDU/REALESTATE

SALINE COUNTY HOME SALES



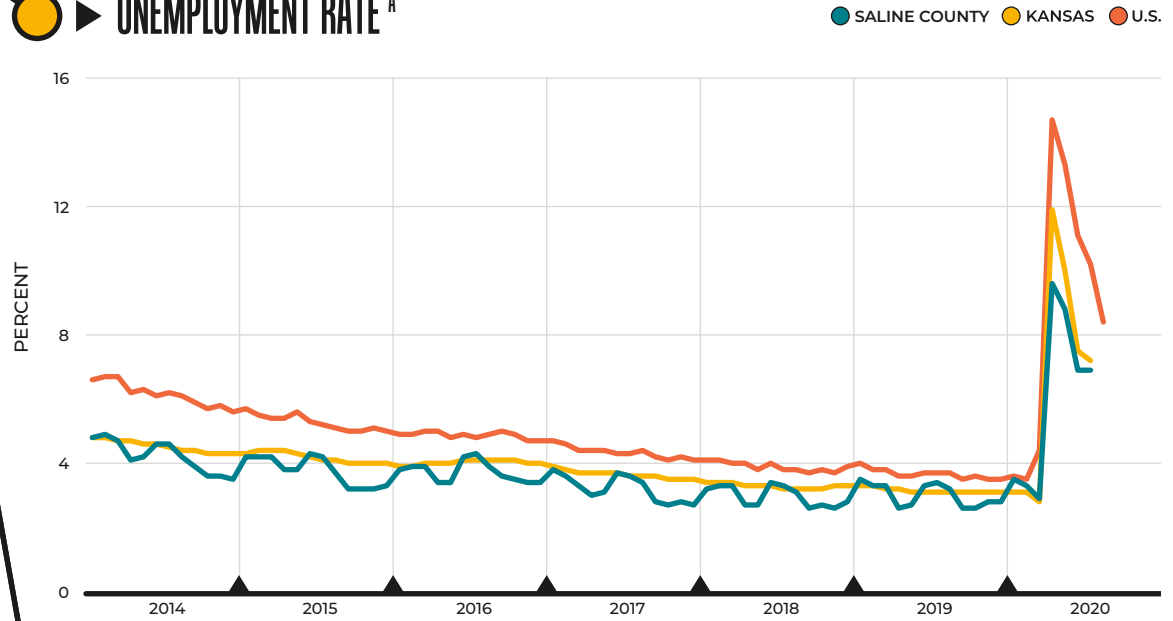
SOURCES:
Great Plains Association of REALTORS® and participating Kansas REALTOR® MLS systems

THE SALINE COUNTY HOUSING OUTLOOK
IS MADE POSSIBLE BY

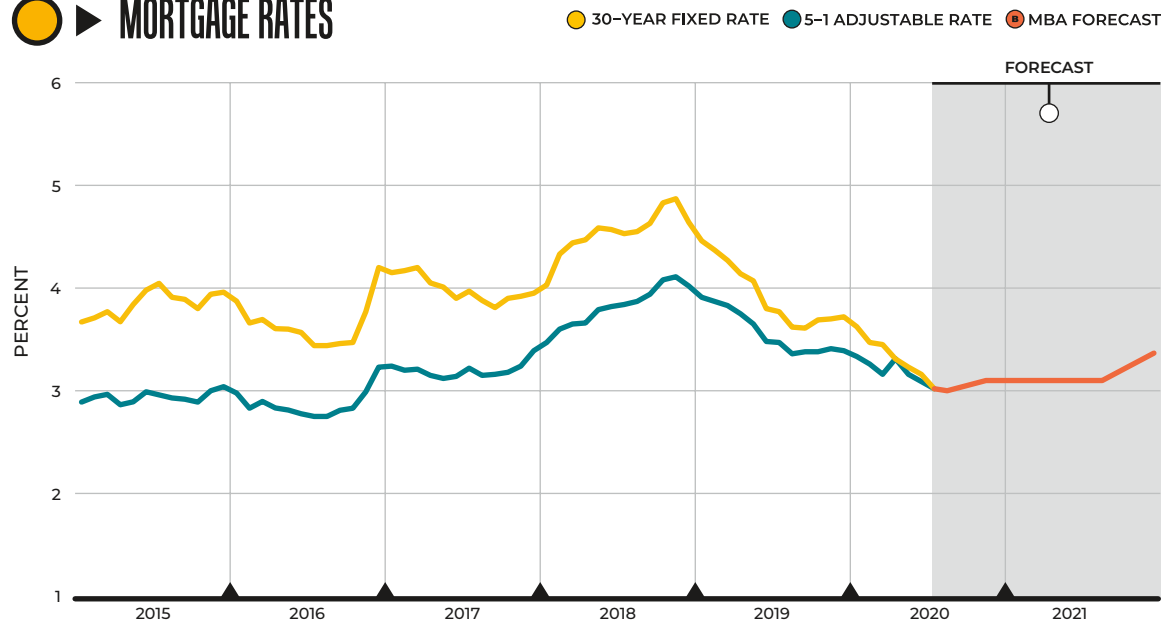


ECONOMIC OVERVIEW

UNEMPLOYMENT RATE ^A



MORTGAGE RATES



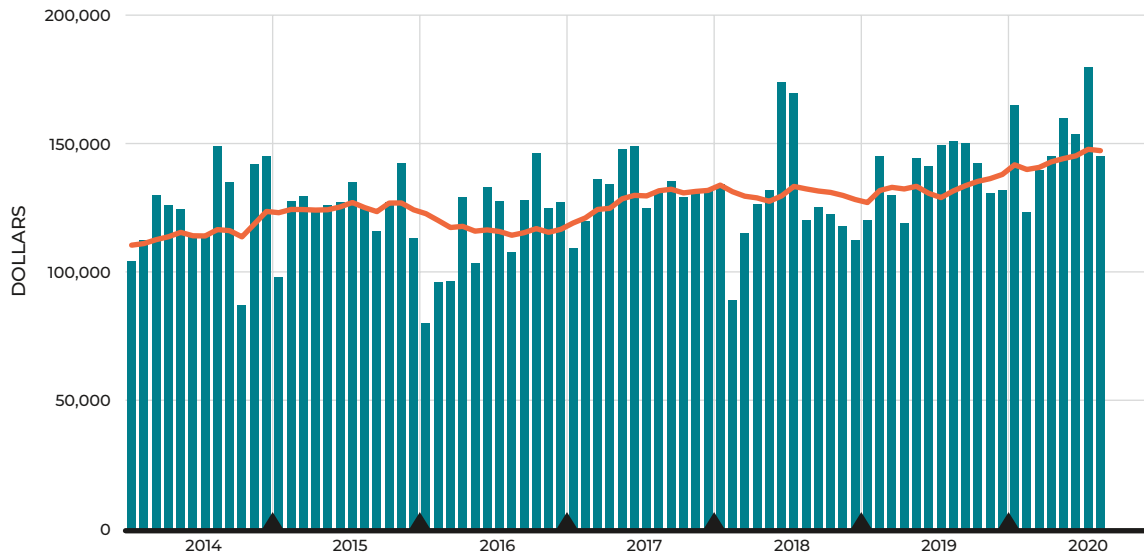
SOURCES:
 Freddie Mac
 Mortgage Bankers Association
 U.S. Bureau of Labor Statistics

NOTES:
^A Kansas and U.S. unemployment rate figures are seasonally adjusted
^B Mortgage Bankers Association August 2020 forecast of the 30-year conventional mortgage rate

SALINE COUNTY HOUSING STATISTICS

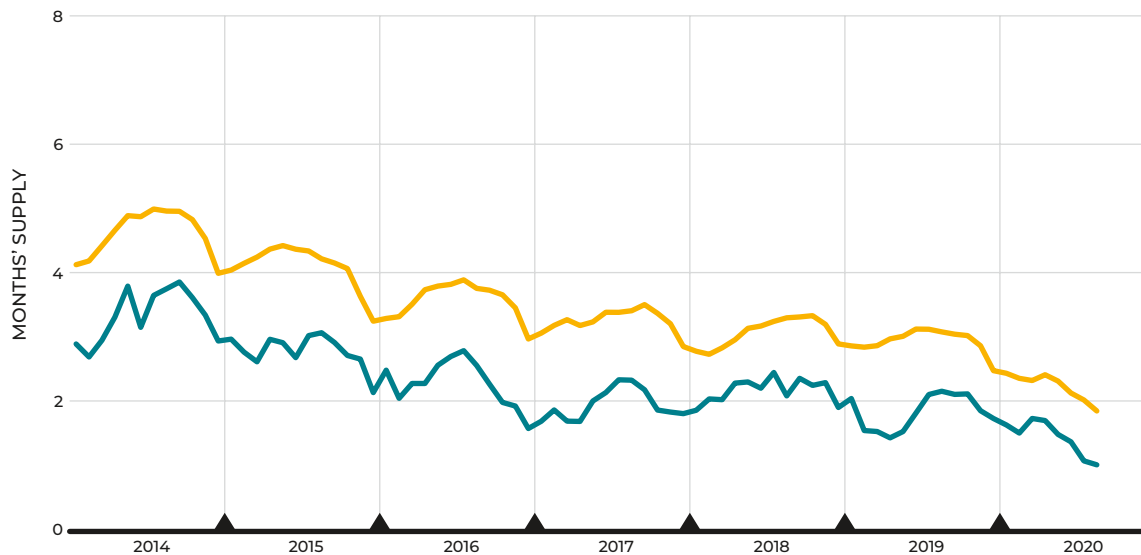
SALINE COUNTY HOME PRICES

● MEDIAN SALE PRICE ● MOVING AVERAGE



INVENTORY OF HOMES AVAILABLE FOR SALE ^B

● SALINE COUNTY ● KANSAS



SOURCES:

Great Plains Association of REALTORS® and participating Kansas REALTOR® MLS systems

NOTES:

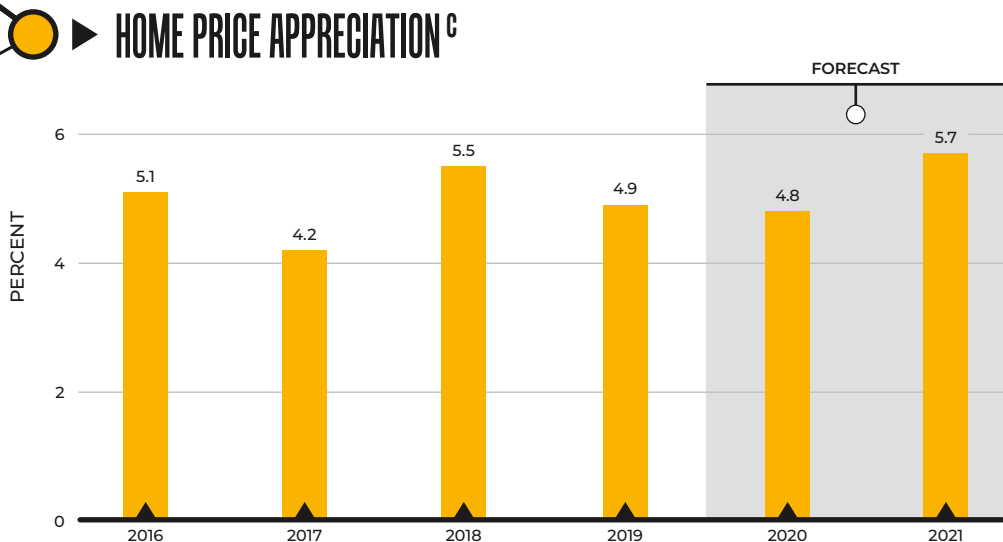
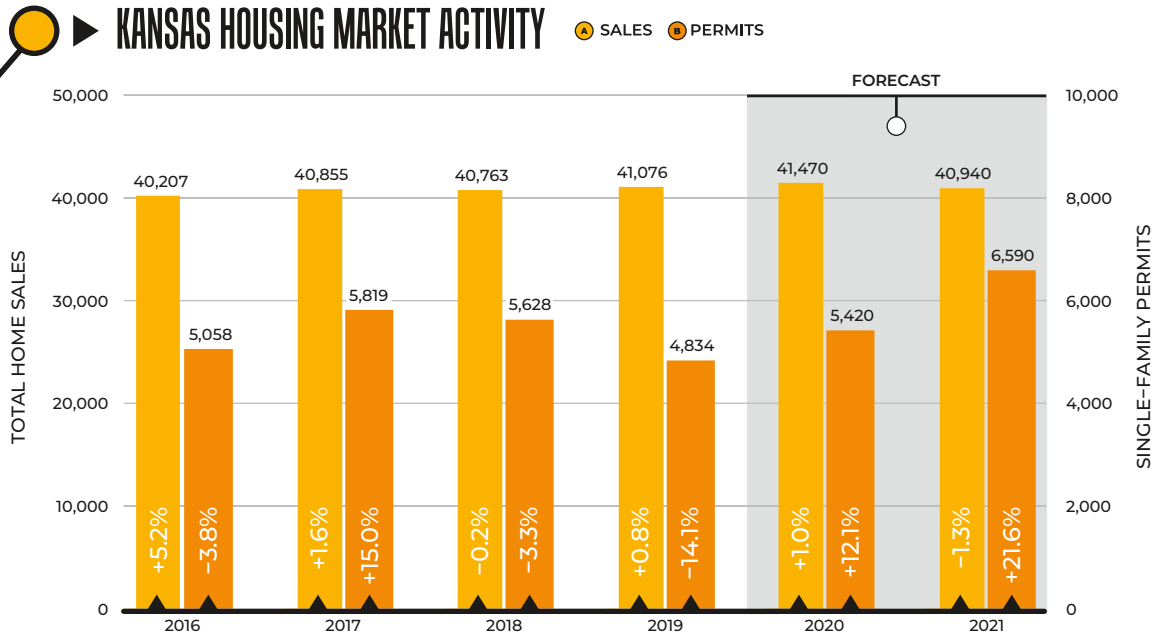
- ^A Twelve-month trailing moving average of the median sale price of all homes in Saline County
- ^B Active listings divided by the 12-month trailing moving average of sales

The WSU Center for Real Estate: Laying a Foundation for Real Estate in Kansas

The Center for Real Estate was created to help deepen the connections between the region's professional real estate community and the academic programs at Wichita State University. Whether you want to better understand the area's real estate markets or engage our students as interns or full-time employees, the WSU Center for Real Estate is your go-to resource.

FOR THE LATEST DATA AND ANALYSIS ON REAL ESTATE MARKETS IN KANSAS, VISIT WICHITA.EDU/REALESTATE.

KANSAS STATEWIDE HOUSING FORECAST



SOURCES:

Federal Housing Finance Agency
National Association of REALTORS®
Participating REALTOR® multiple listing services across Kansas
U.S. Bureau of the Census
WSU Center for Real Estate

NOTES:

- ④ Total home sales in Kansas as reported by participating REALTOR® multiple listing services across the state
- ⑤ Single-family building permits issued in Kansas as reported by the U.S. Bureau of the Census
- ⑥ Year-over-year percentage change in the Federal Housing Finance Agency all-transactions housing price index for Kansas, as measured using 4th quarter values