

# Housing Markets in the face of COVID Shutdowns

Wichita Downtown Rotary  
April 27, 2020

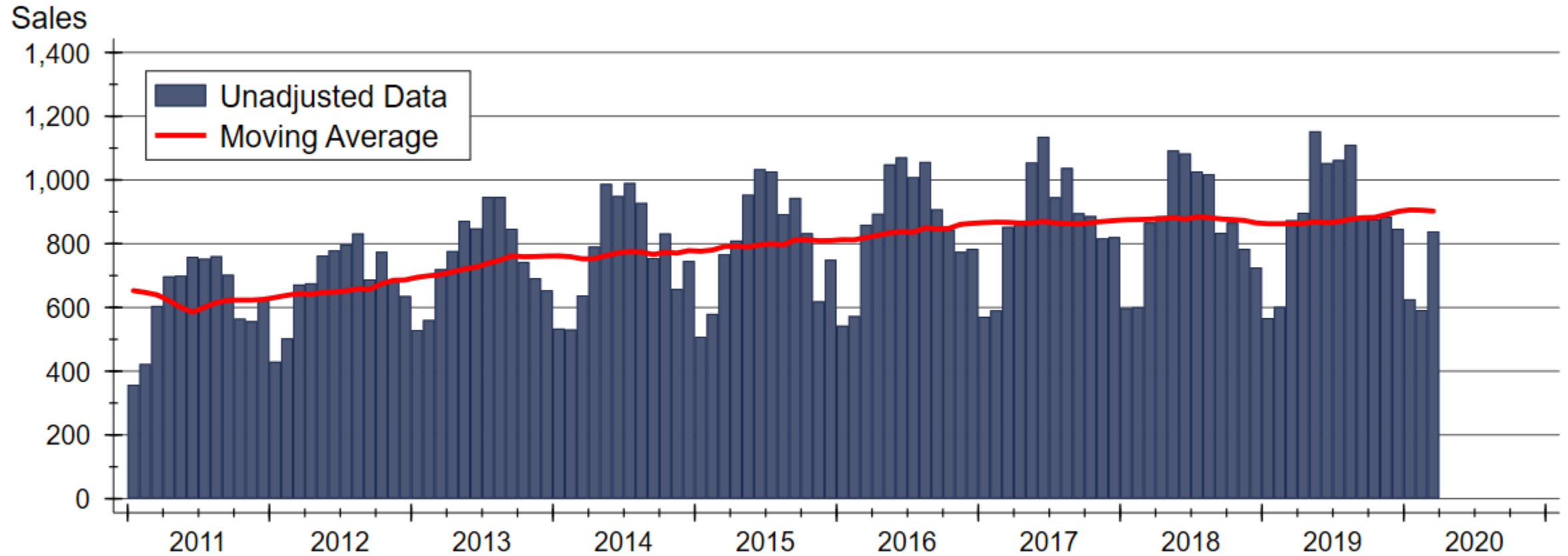
Dr. Stanley D. Longhofer  
WSU Center for Real Estate



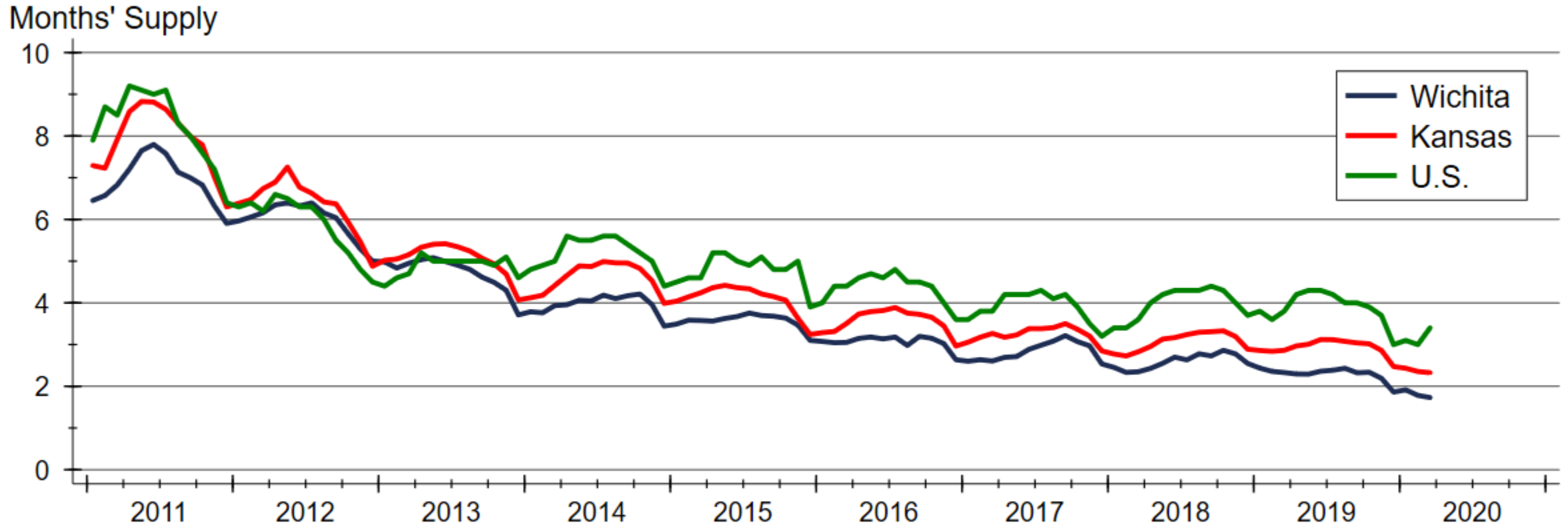
WICHITA STATE  
UNIVERSITY  
*W. FRANK BARTON*  
*SCHOOL OF BUSINESS*



# Wichita-area home sales had flattened before the COVID shutdowns



# Tight inventories were the reason for the slowdown in sales

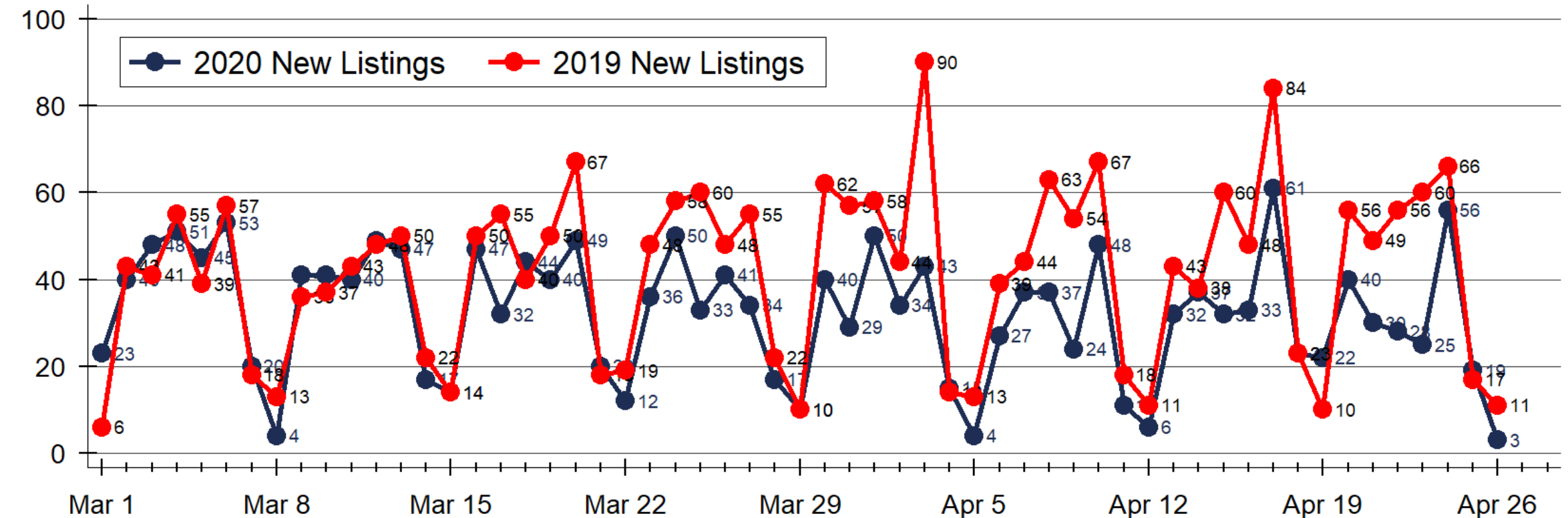


Sources: NAR, KAR and South Central Kansas MLS

Note: Data are seasonally adjusted

# Newly listed homes declined after March 15

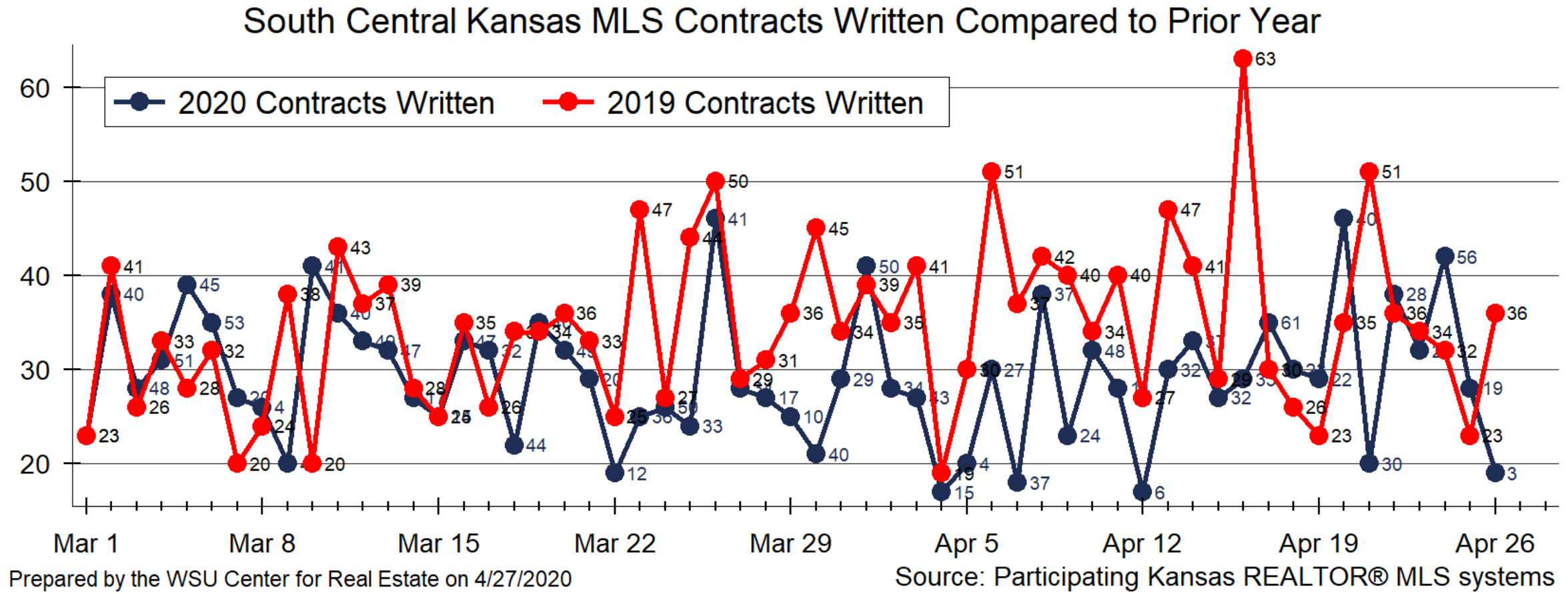
South Central Kansas MLS New Listings Compared to Prior Year



Prepared by the WSU Center for Real Estate on 4/27/2020

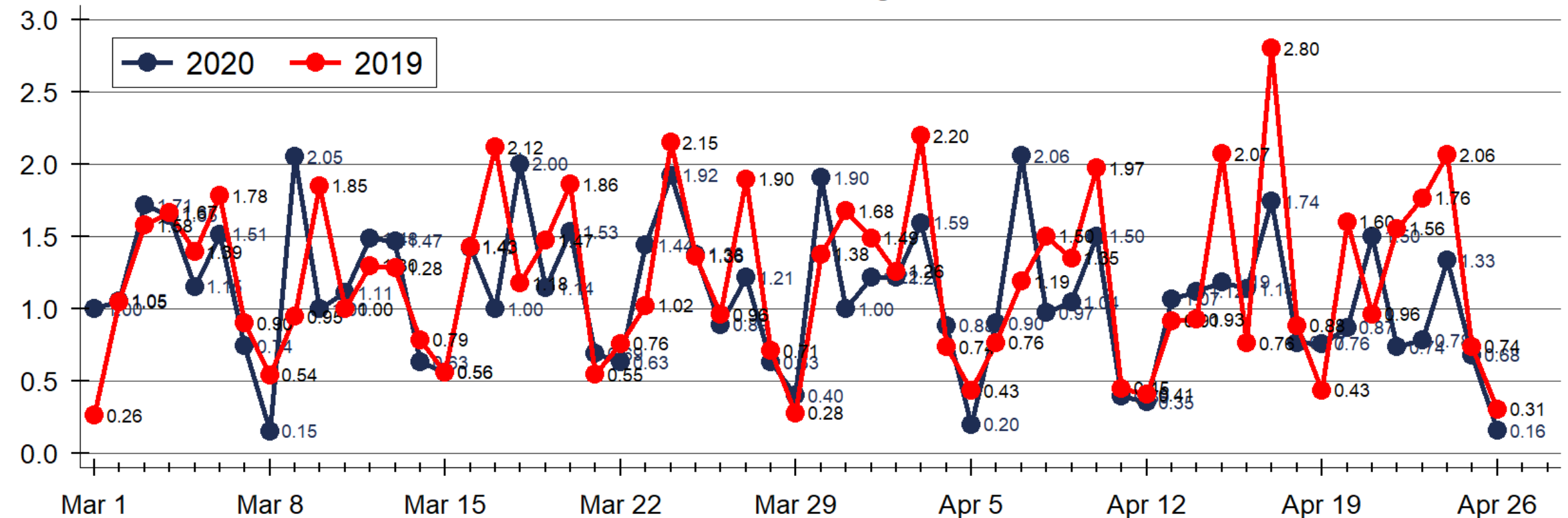
Source: Participating Kansas REALTOR® MLS systems

# New contracts slowed a week or two later



# Listings are declining faster than contracts

South Central Kansas MLS Listings-to-Contracts Ratio

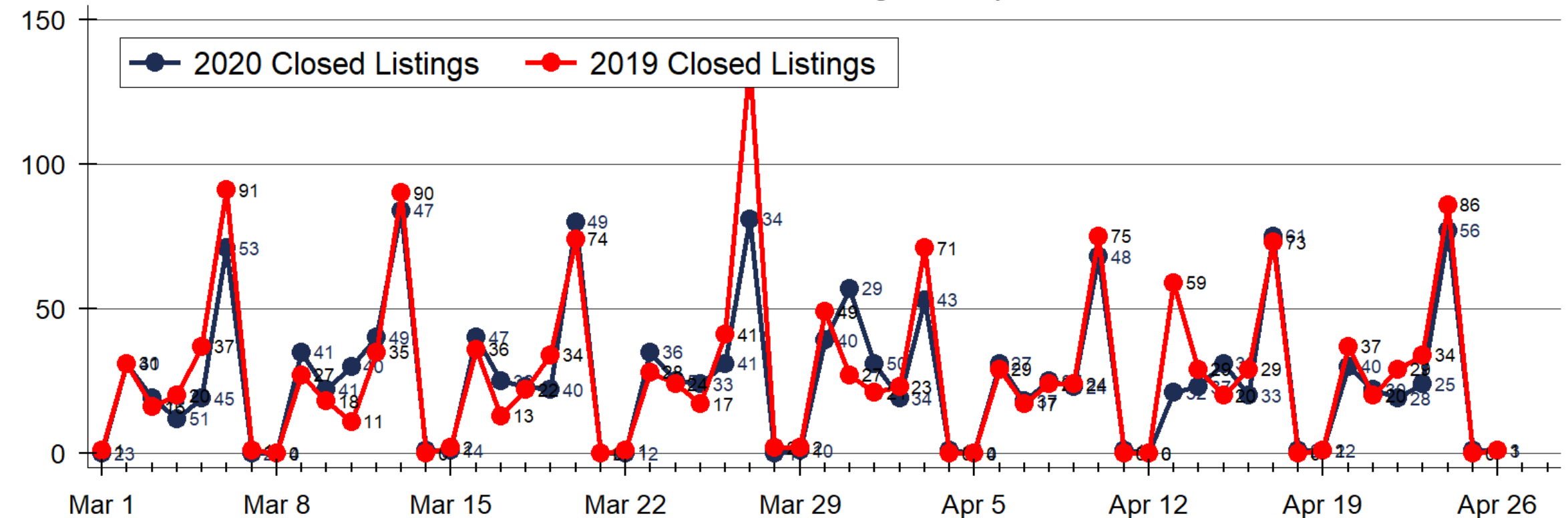


Prepared by the WSU Center for Real Estate on 4/27/2020

Source: Participating Kansas REALTOR® MLS systems

# Closings (sales) have not yet started to slow

South Central Kansas MLS Sold Listings Compared to Prior Year



Prepared by the WSU Center for Real Estate on 4/27/2020

Source: Participating Kansas REALTOR® MLS systems



# WSU Center for Real Estate

## Laying a Foundation for Real Estate in Kansas

*[www.wichita.edu/realestate](http://www.wichita.edu/realestate)*



WICHITA STATE  
UNIVERSITY  
W. FRANK BARTON  
SCHOOL OF BUSINESS

