

# Wichita Economic Update

CCIM Commercial Real Estate Forum  
October 18, 2019

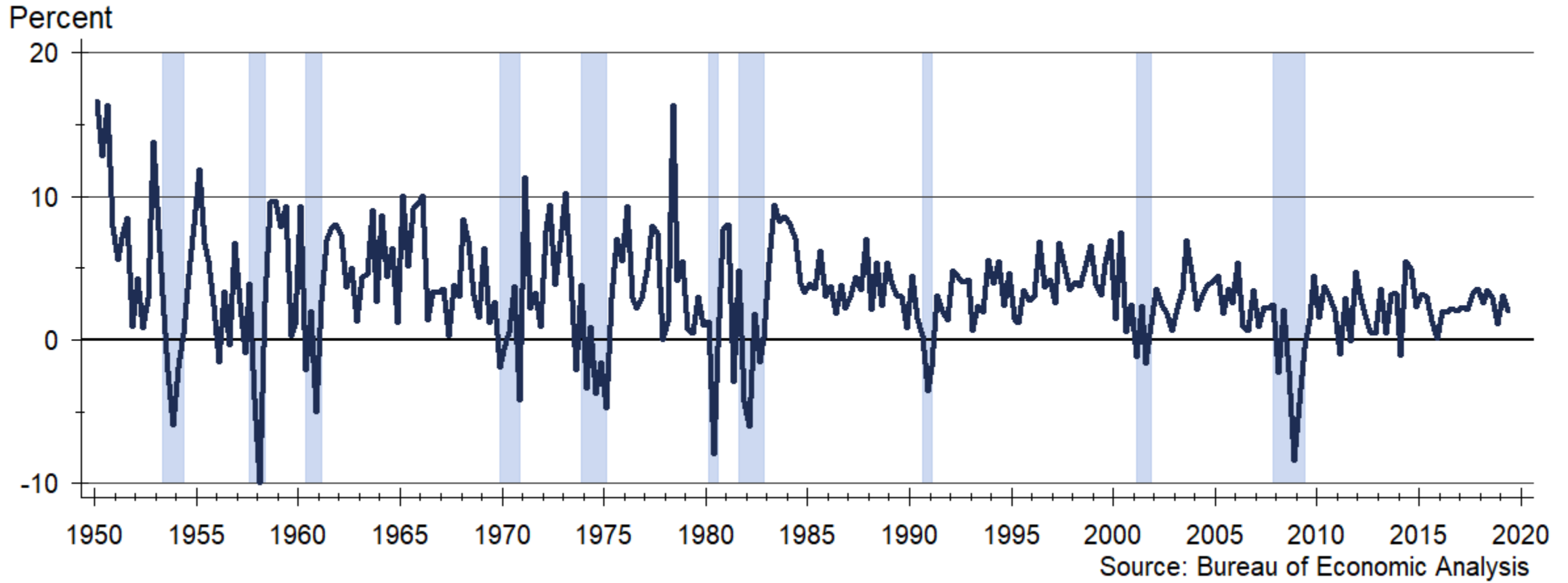
Dr. Stanley D. Longhofer  
WSU Center for Real Estate



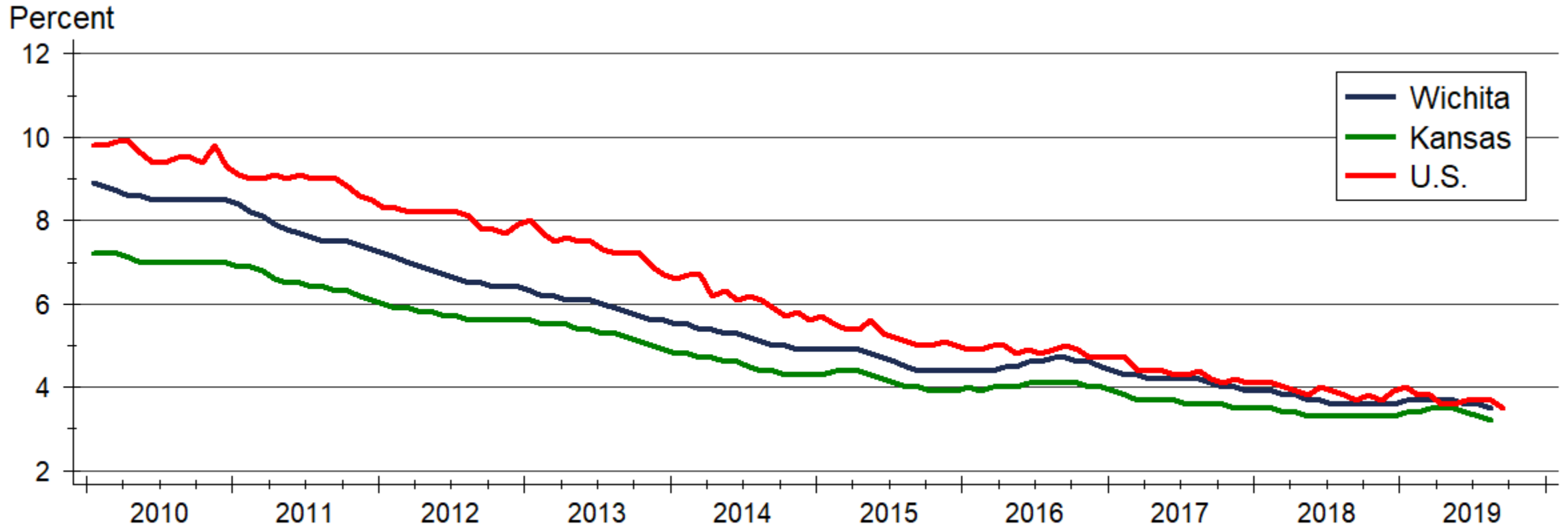
WICHITA STATE  
UNIVERSITY  
*W. FRANK BARTON*  
*SCHOOL OF BUSINESS*



# Real GDP Growth

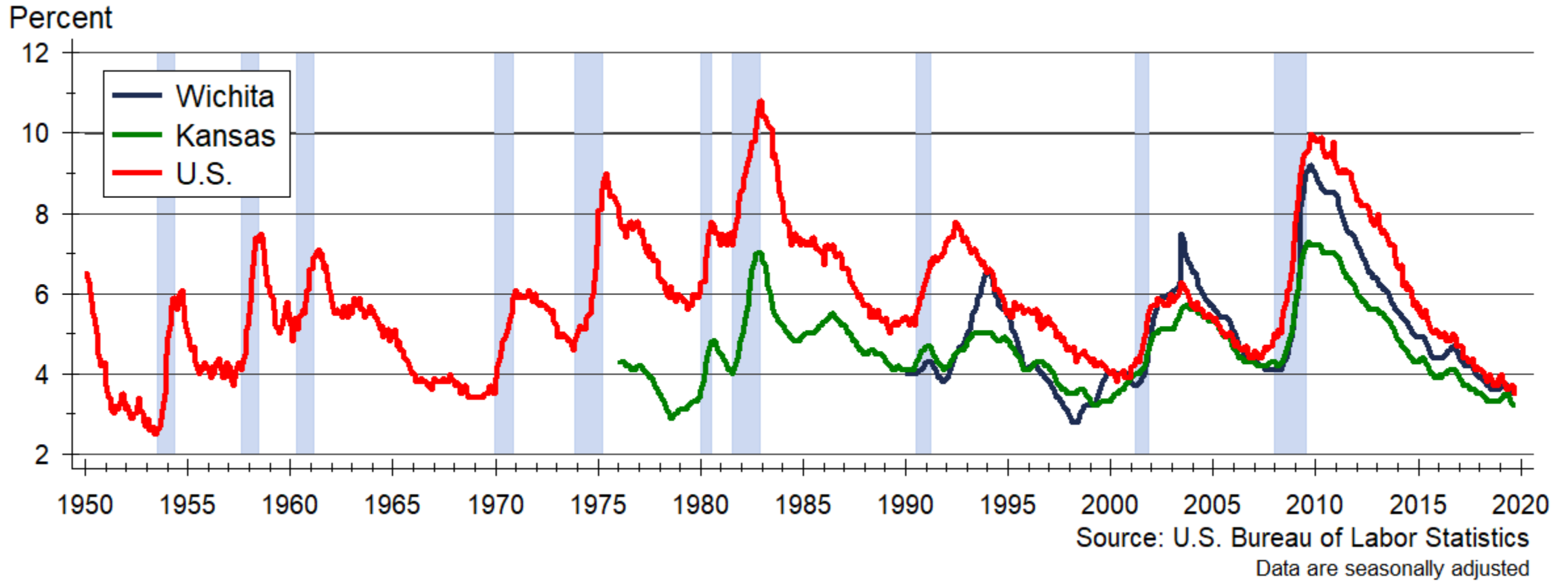


# Unemployment Rate



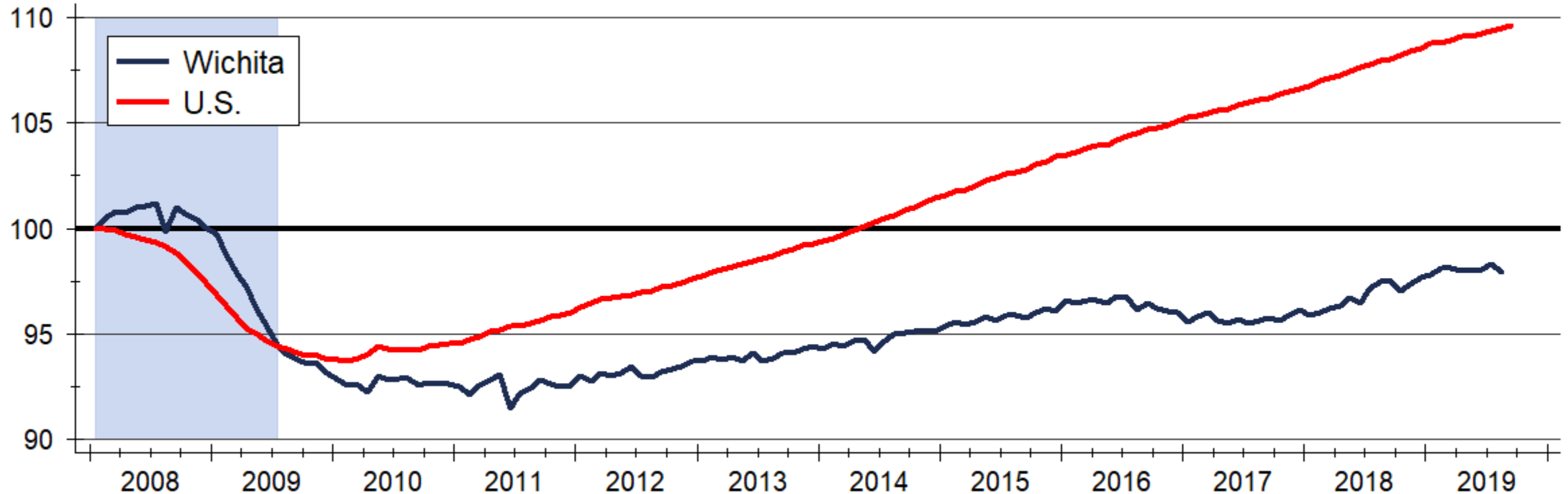
Source: U.S. Bureau of Labor Statistics  
Data are seasonally adjusted

# Unemployment Rates Since 1950



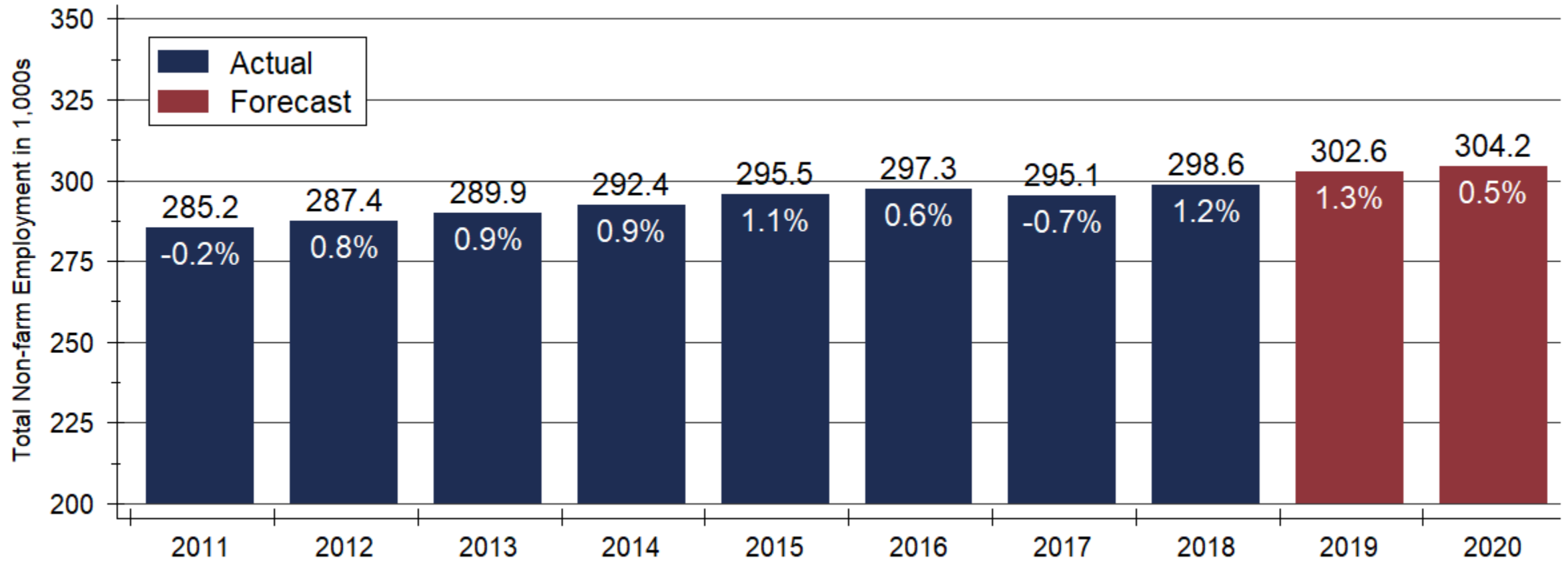
# Non-farm Employment

Index: 2008m1 = 100



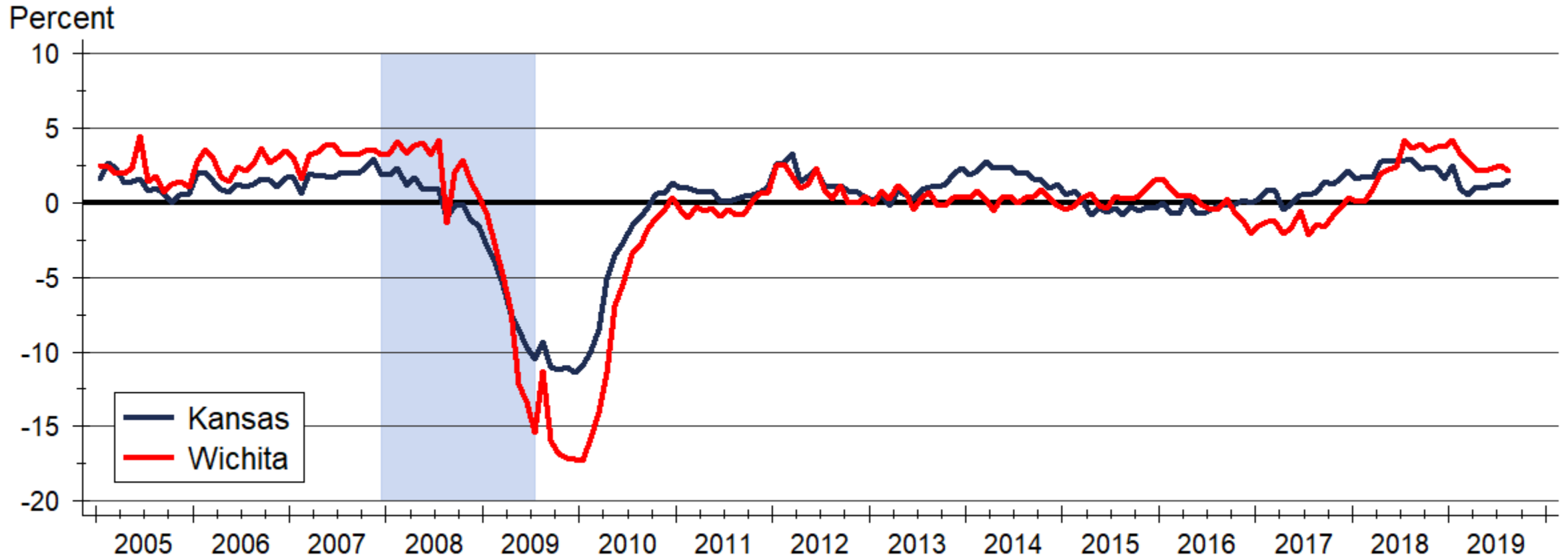
Source: U.S. Bureau of Labor Statistics  
Index created from seasonally adjusted data

# Wichita Employment Forecast



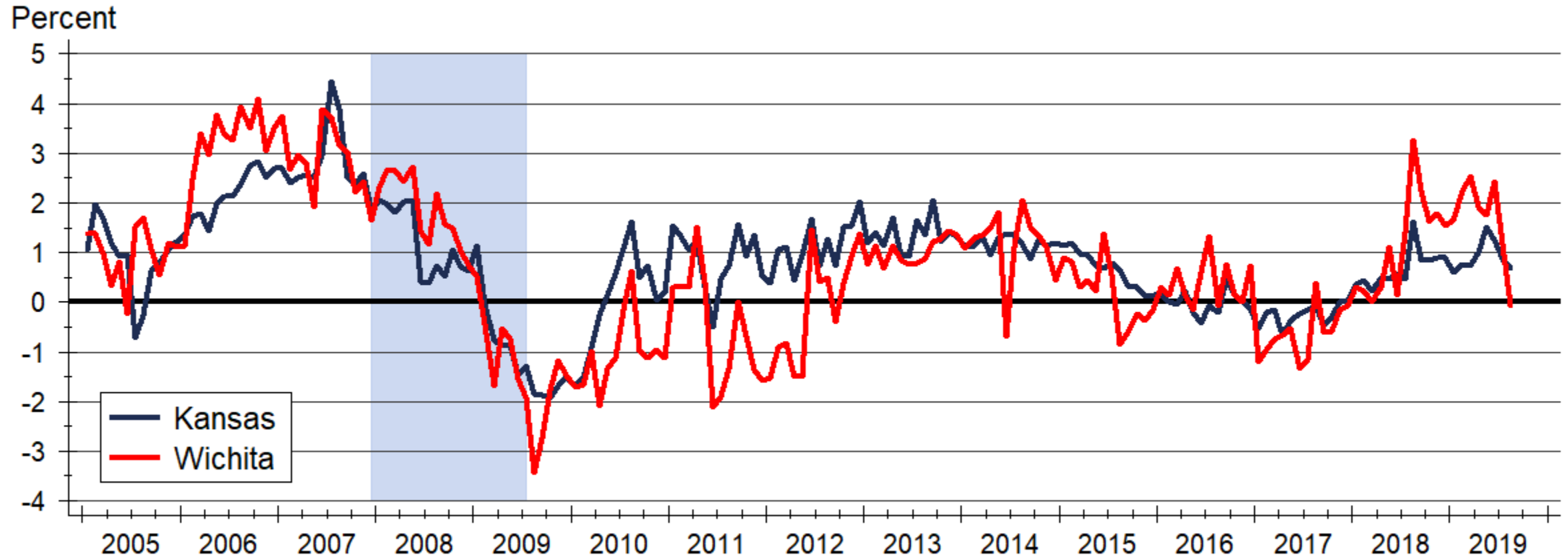
Sources: Kansas Department of Labor and WSU CEDBR

# Industrial Employment Growth



Source: WSU Center for Real Estate using data from the U.S. Bureau of Labor Statistics

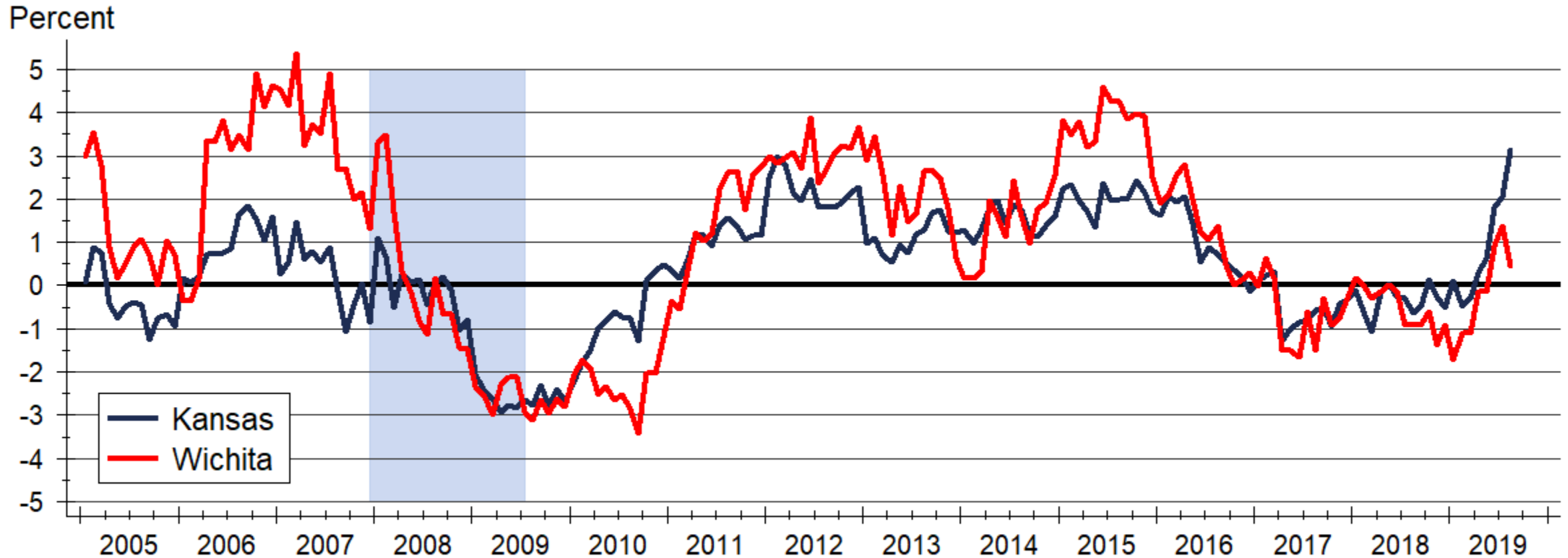
# Office Employment Growth



Source: WSU Center for Real Estate using data from the U.S. Bureau of Labor Statistics

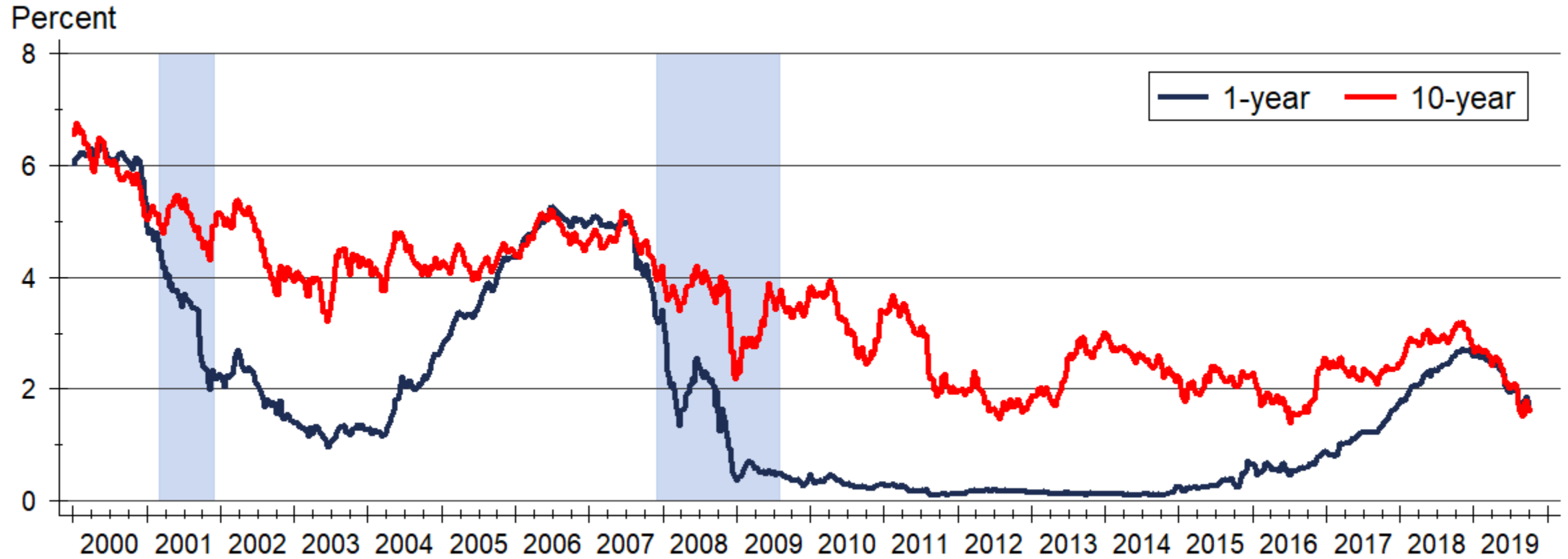


# Retail Employment Growth

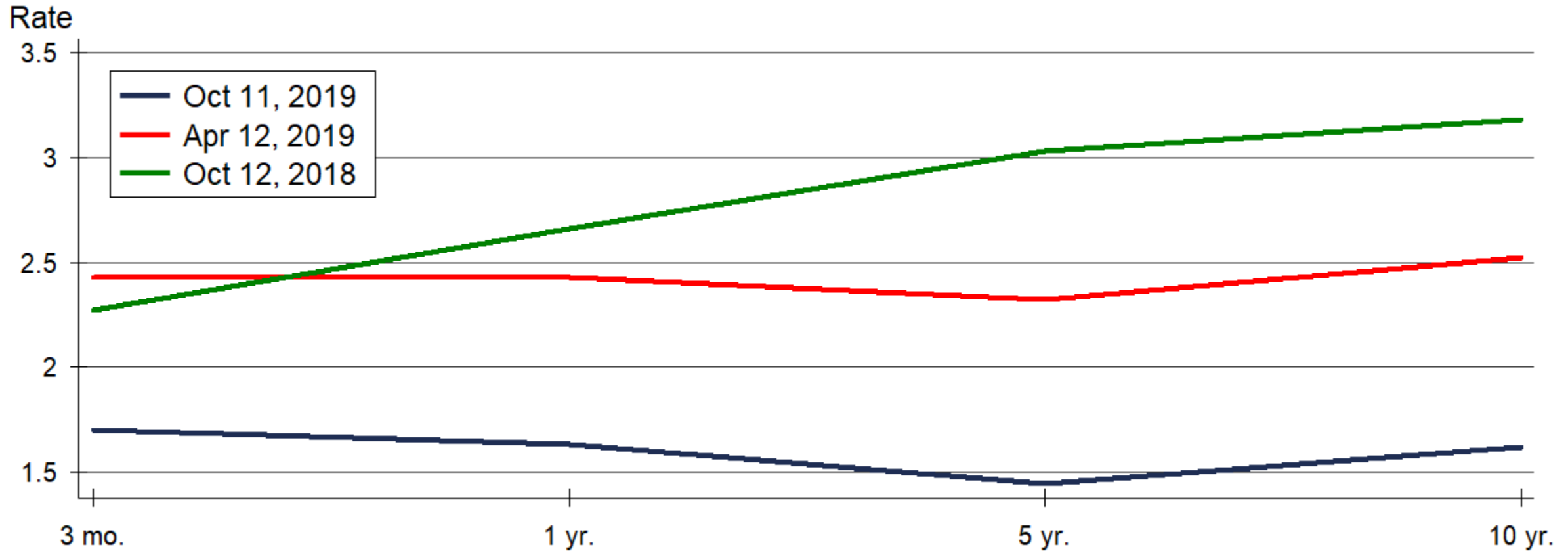


Source: WSU Center for Real Estate using data from the U.S. Bureau of Labor Statistics

# Treasury Rates

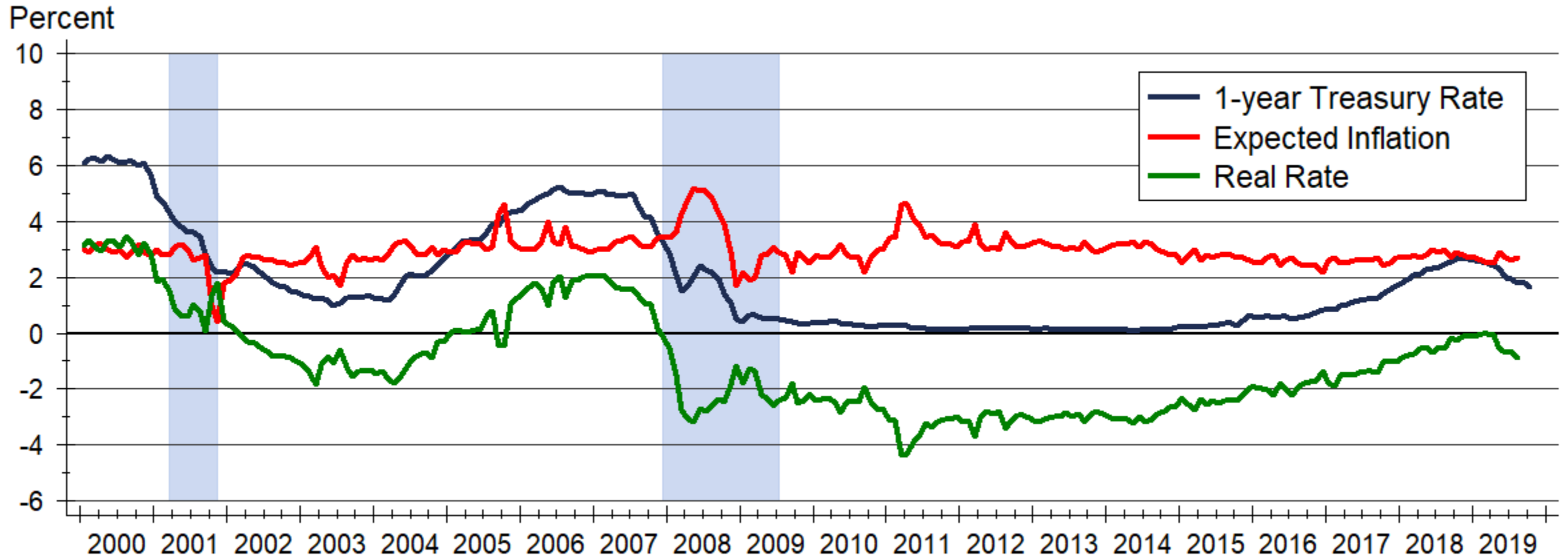


# Treasury Yield Curve



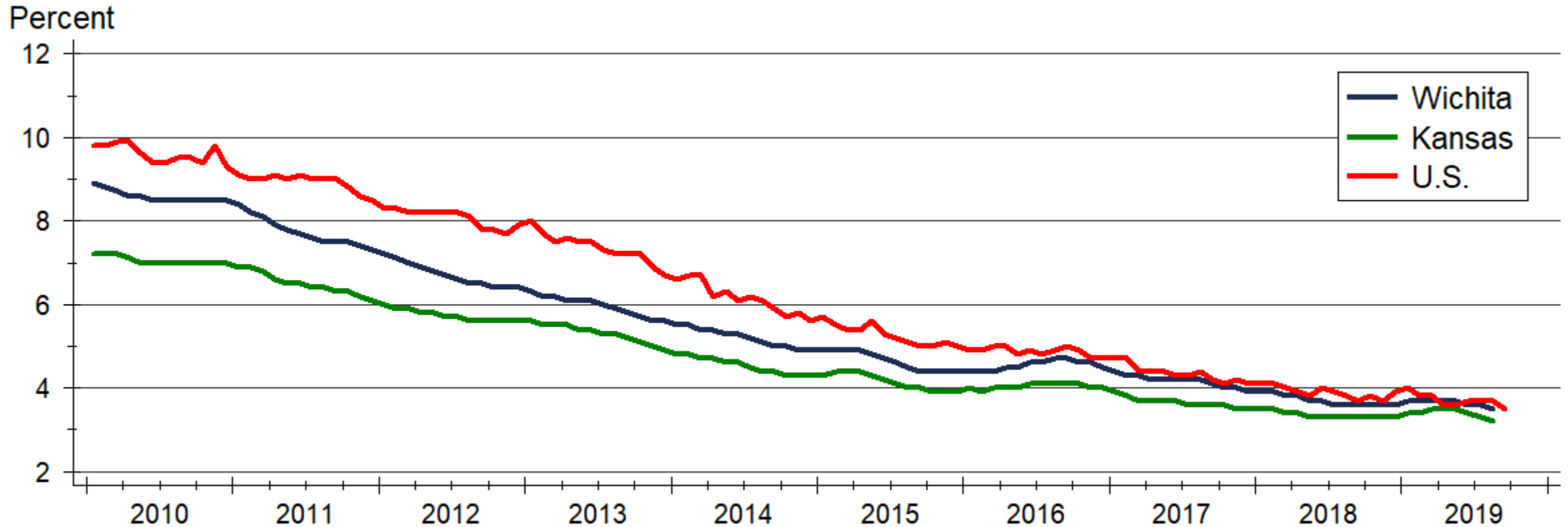
Source: Board of Governors of the Federal Reserve System

# Real Treasury Rates



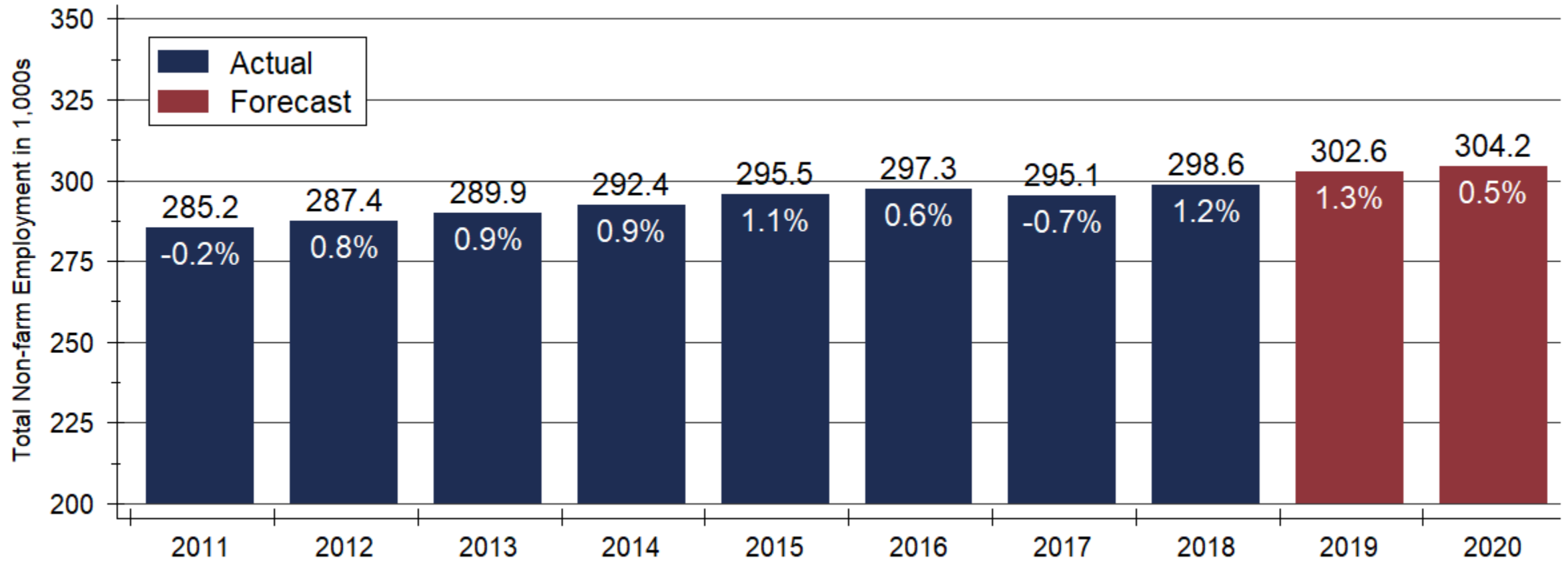
Sources: Board of Governors of the Federal Reserve System and University of Michigan

# Unemployment Rate



Source: U.S. Bureau of Labor Statistics  
Data are seasonally adjusted

# Wichita Employment Forecast



Sources: Kansas Department of Labor and WSU CEDBR

# WSU Center for Real Estate

## Laying a Foundation for Real Estate in Kansas

*[www.wichita.edu/realestate](http://www.wichita.edu/realestate)*



WICHITA STATE  
UNIVERSITY  
W. FRANK BARTON  
SCHOOL OF BUSINESS

