

Kansas Economic and Housing Markets Update

FHLB Topeka – Kansas Regional Meeting
August 28, 2017

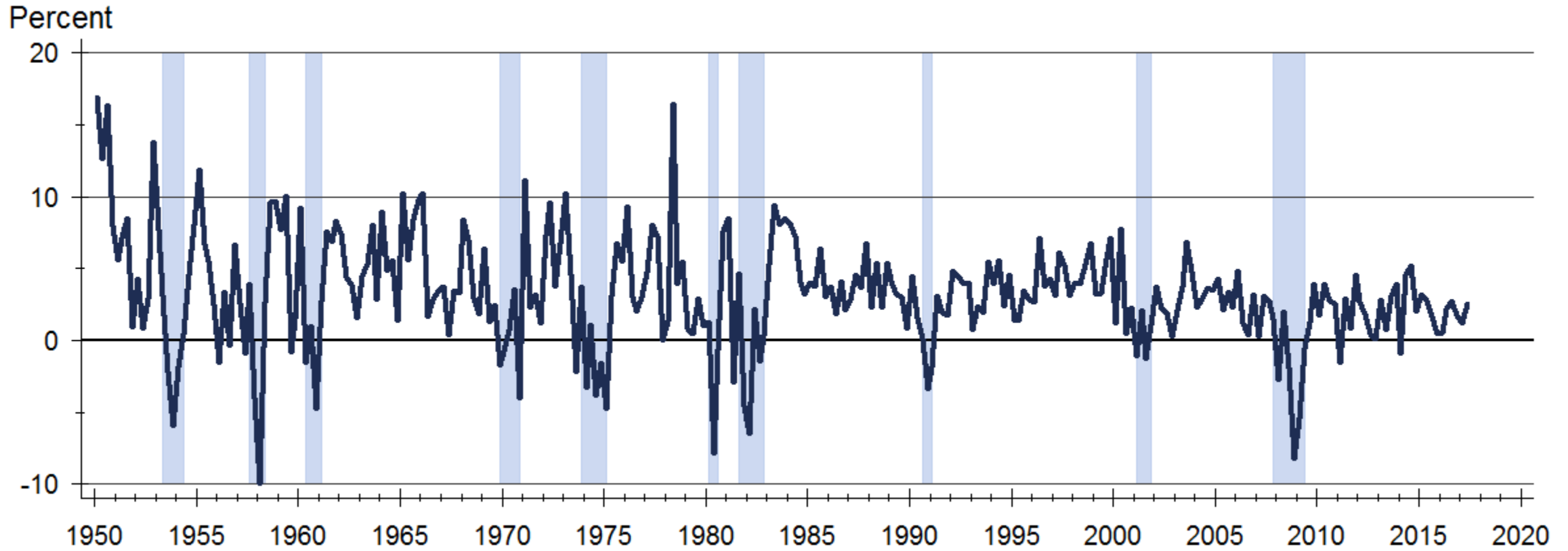
Dr. Stanley D. Longhofer
WSU Center for Real Estate



WICHITA STATE
UNIVERSITY
W. FRANK BARTON
SCHOOL OF BUSINESS

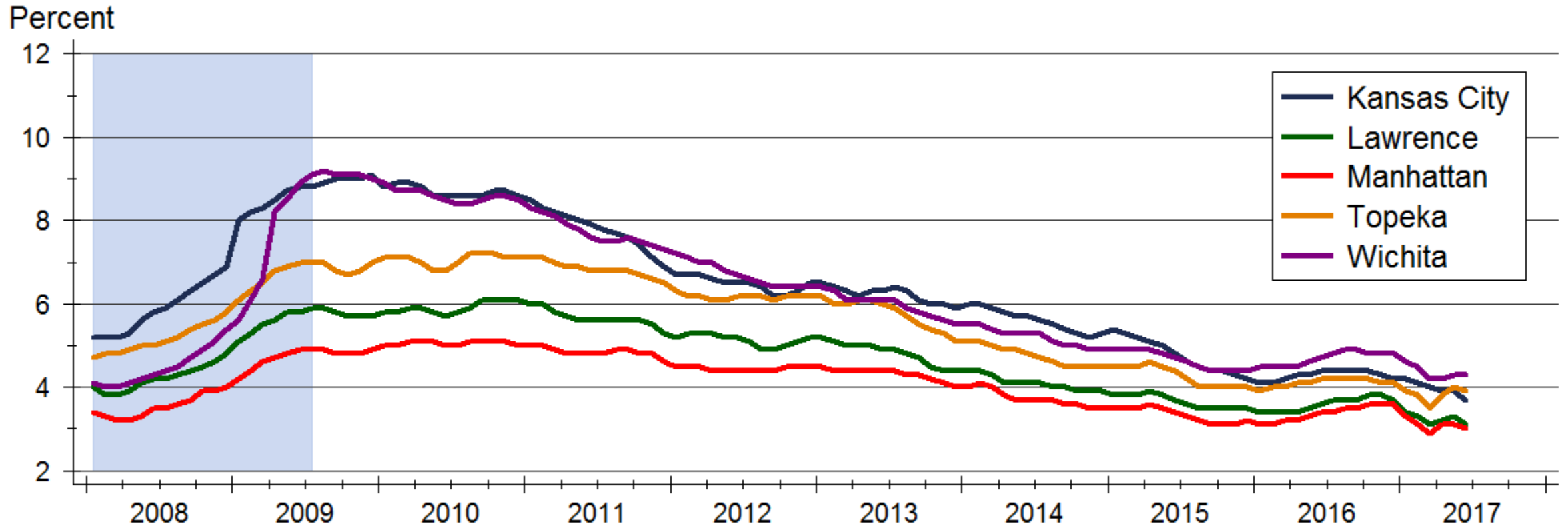


Real GDP Growth



Source: Bureau of Economic Analysis

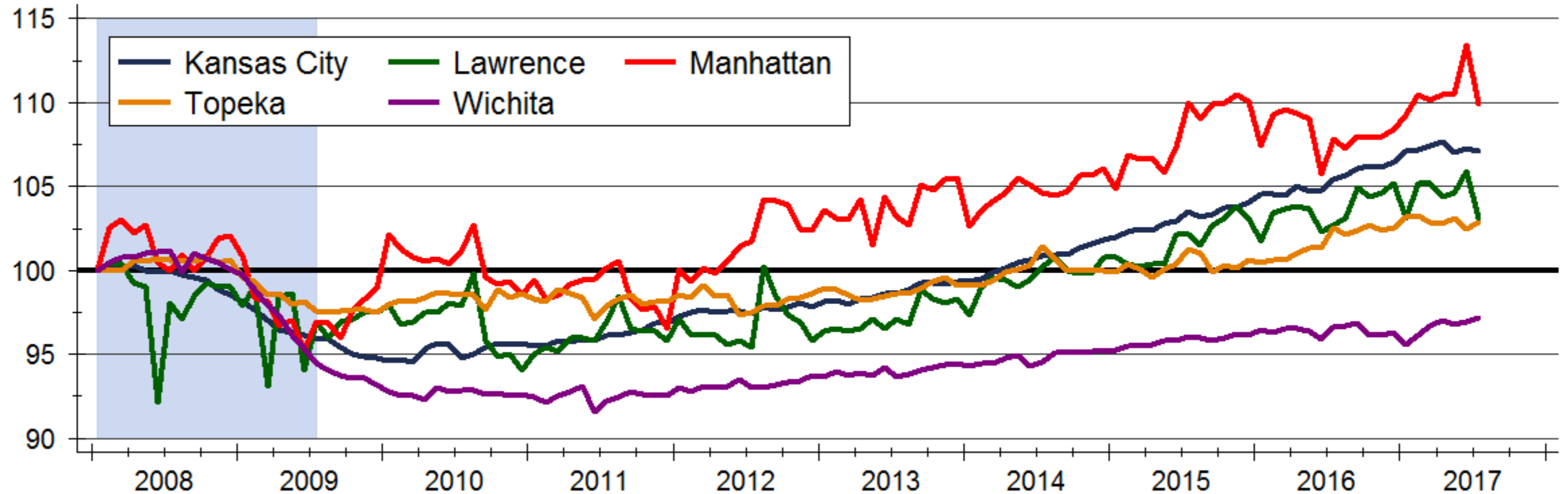
Unemployment Rates across Kansas



Source: U.S. Bureau of Labor Statistics
Data are seasonally adjusted

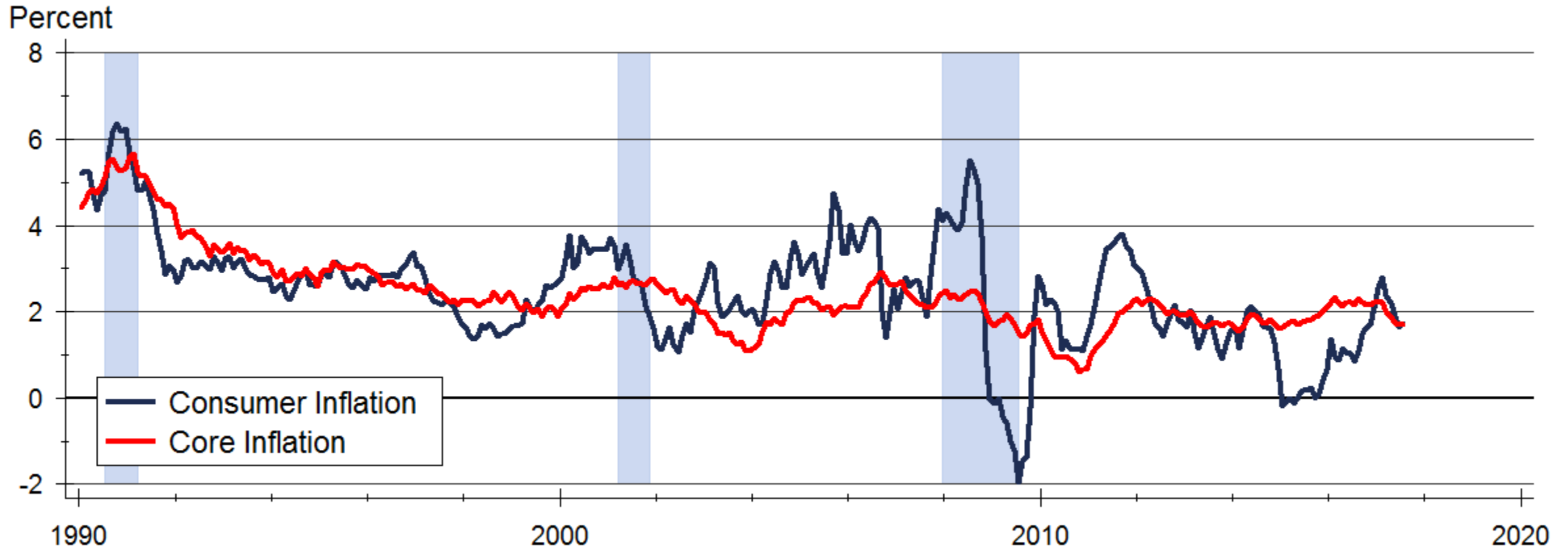
Non-Farm Employment

Index: 2008m1 = 100



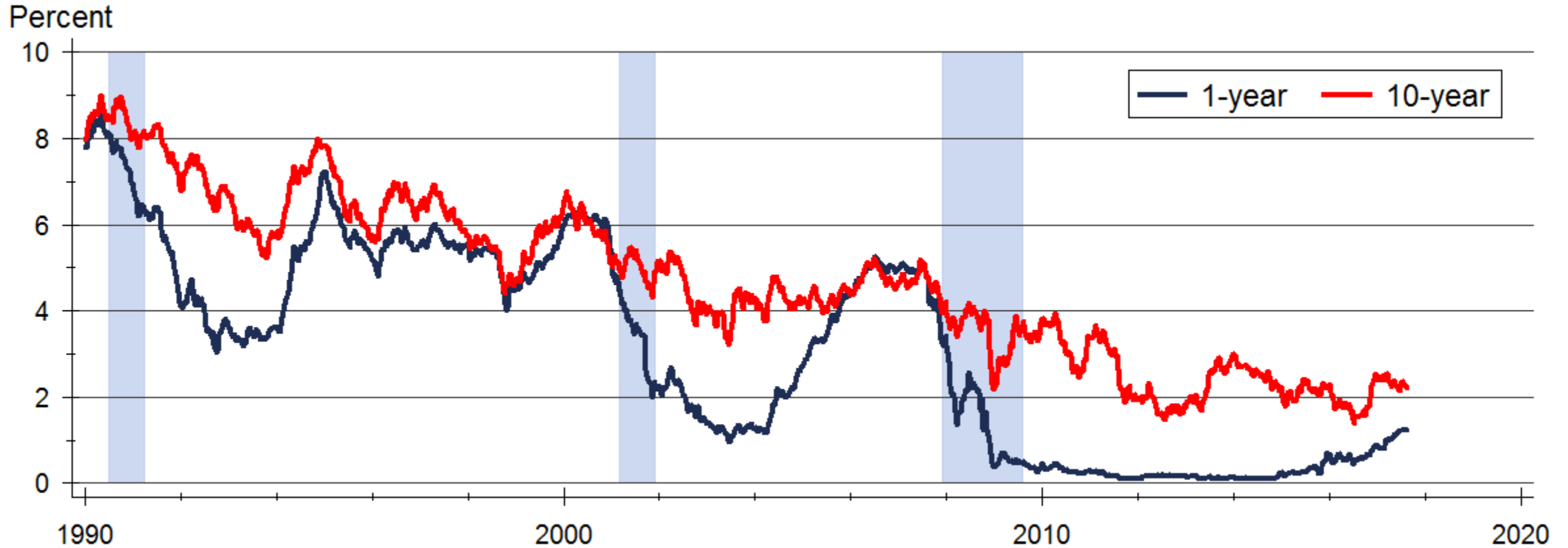
Source: U.S. Bureau of Labor Statistics
Indexes created from seasonally adjusted data

Consumer Inflation

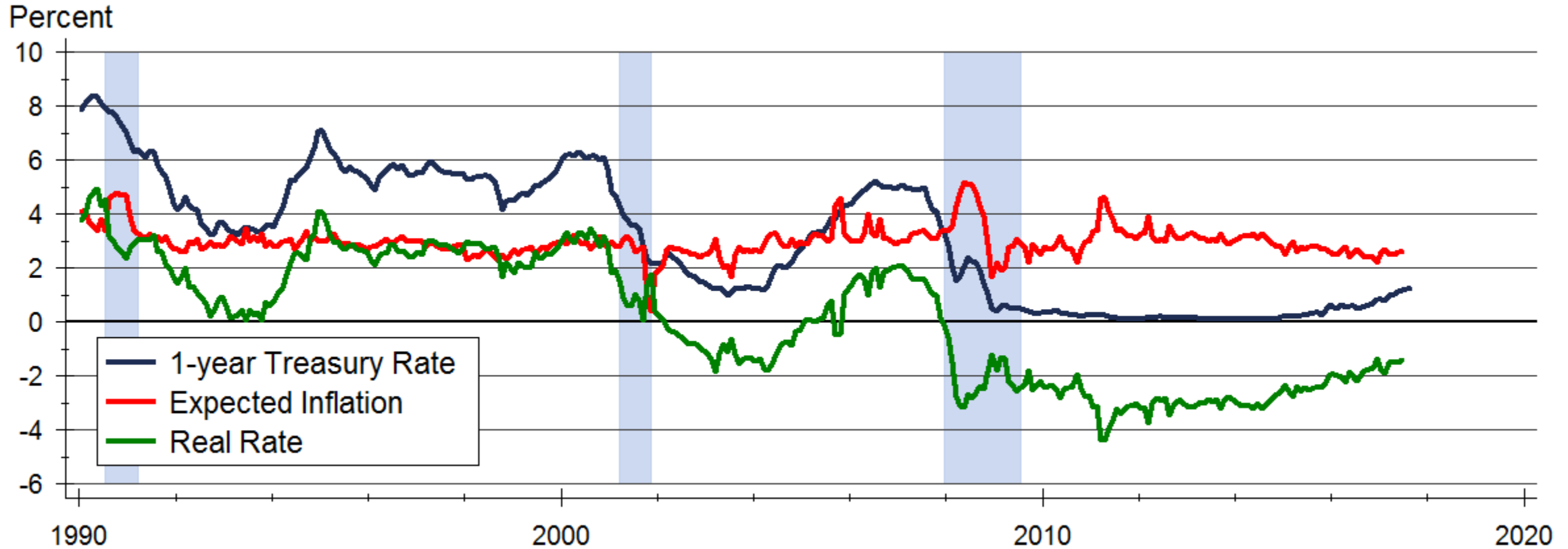


Source: U.S. Bureau of Labor Statistics

U.S. Treasury Rates

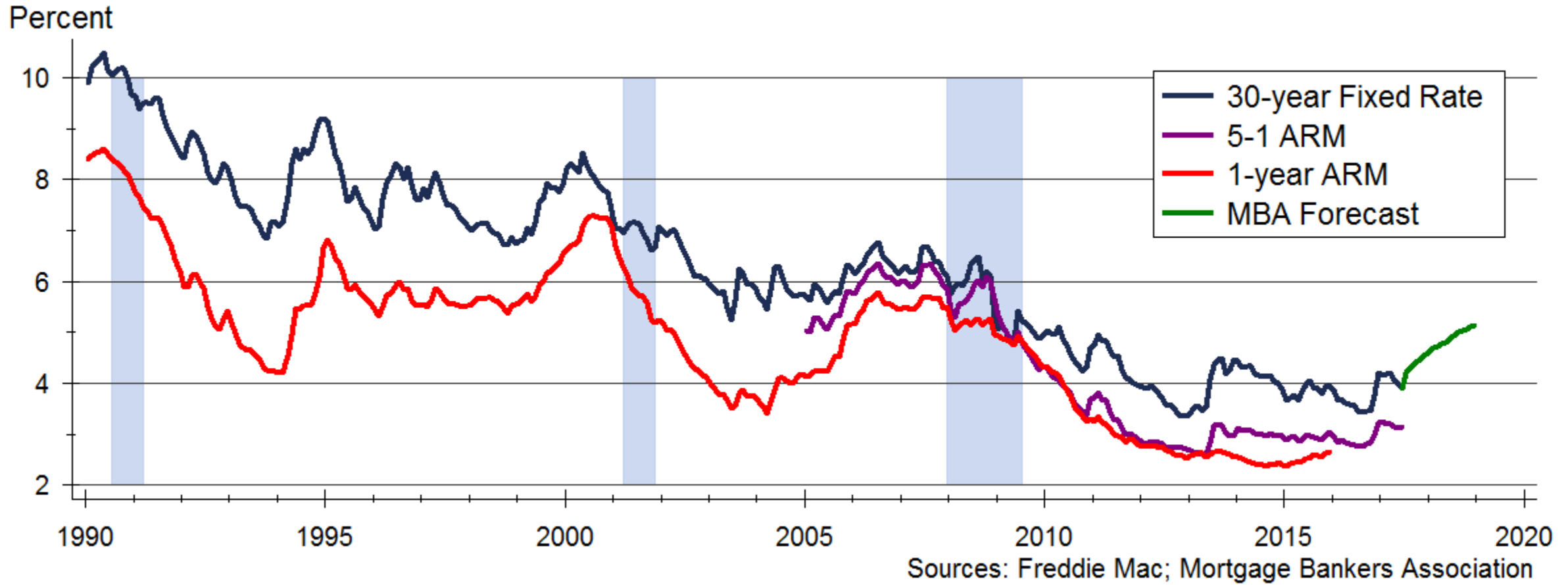


Real Short-Term Interest Rates

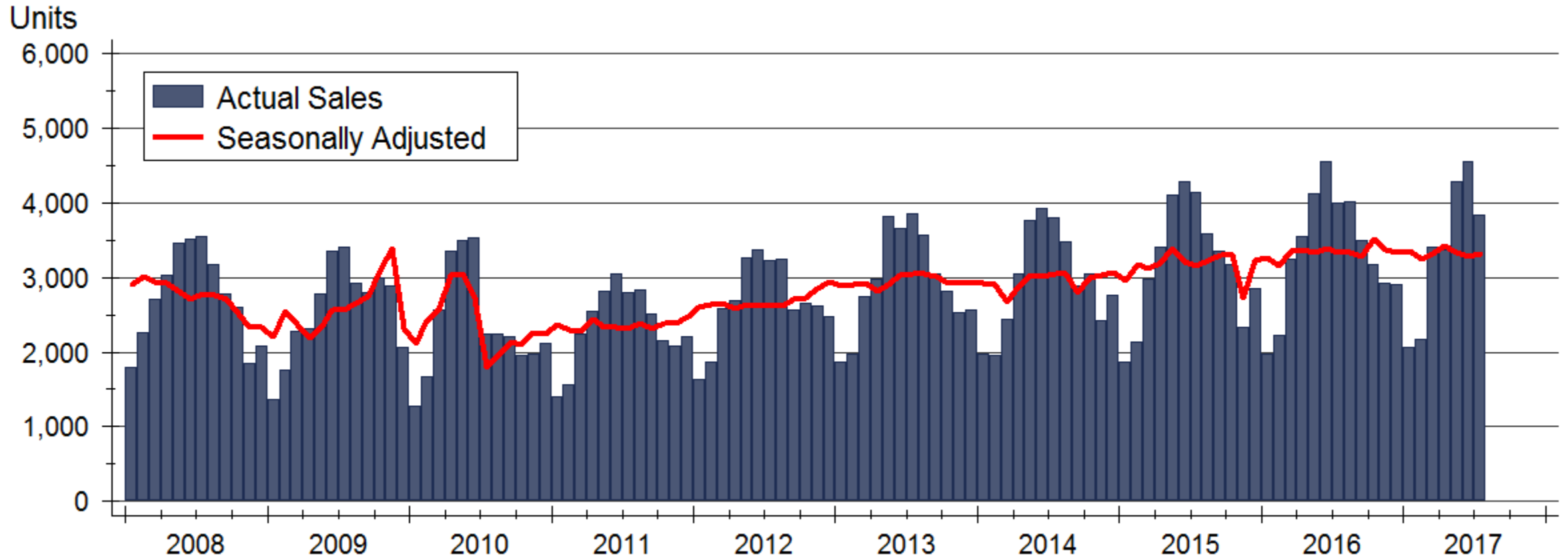


Sources: Board of Governors of the Federal Reserve System and University of Michigan

Monthly Mortgage Rates

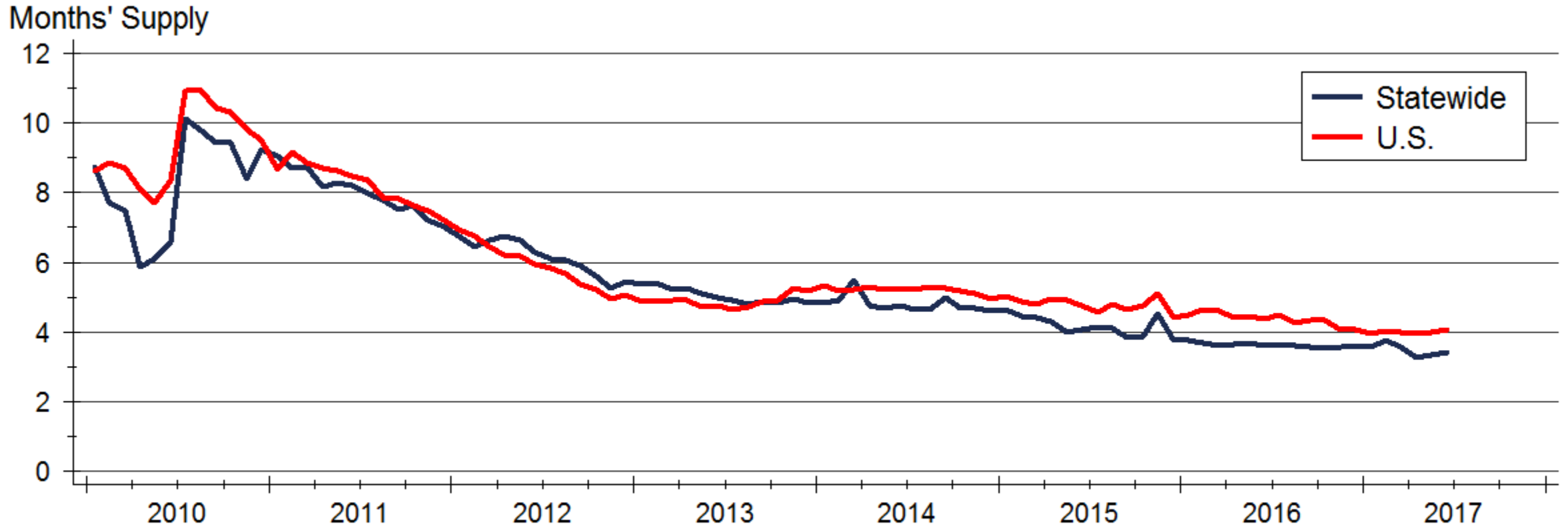


Kansas Home Sales Activity



Source: Participating Kansas REALTOR® MLS systems

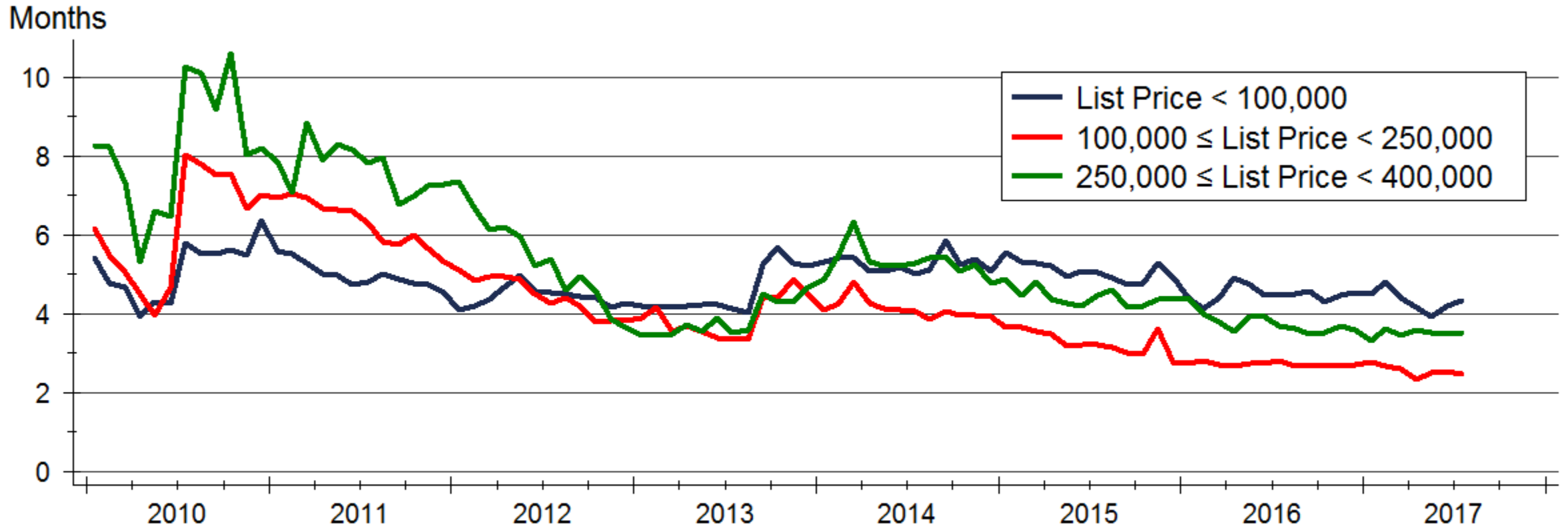
Kansas Inventory of Homes for Sale



Sources: NAR and Participating Kansas REALTOR® MLS systems

Note: Data are seasonally adjusted

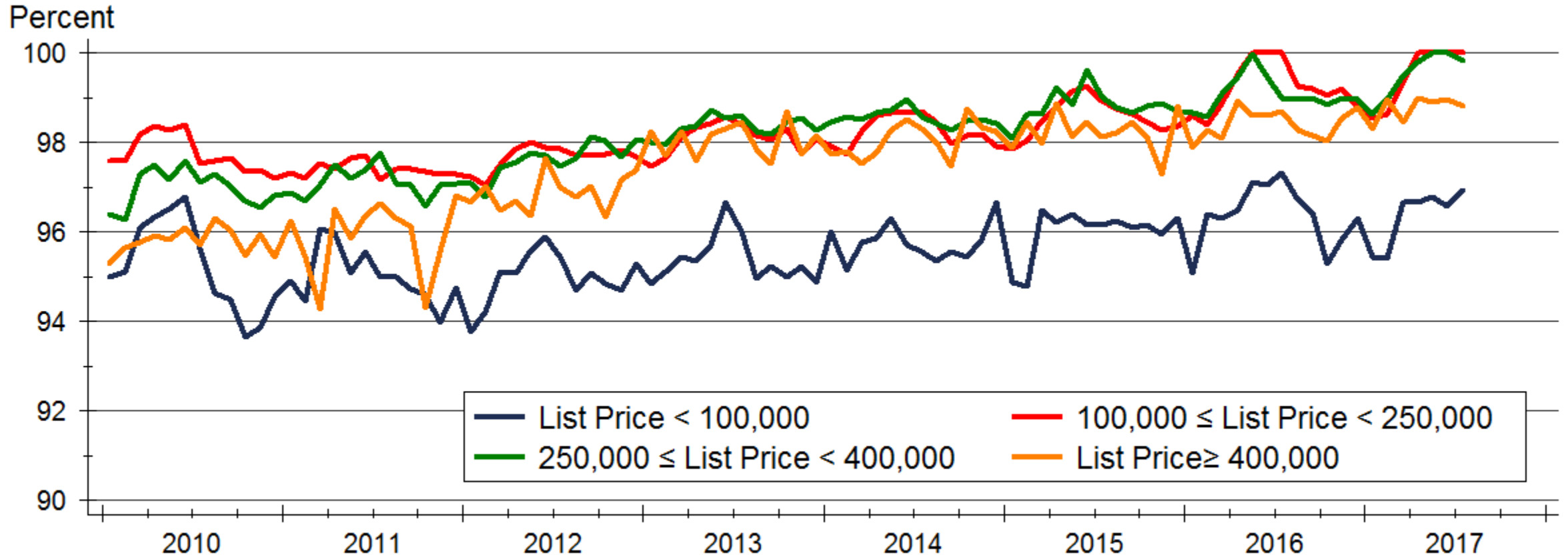
Home Inventories by Price Range



Source: Participating Kansas REALTOR® MLS Systems

Data are seasonally adjusted

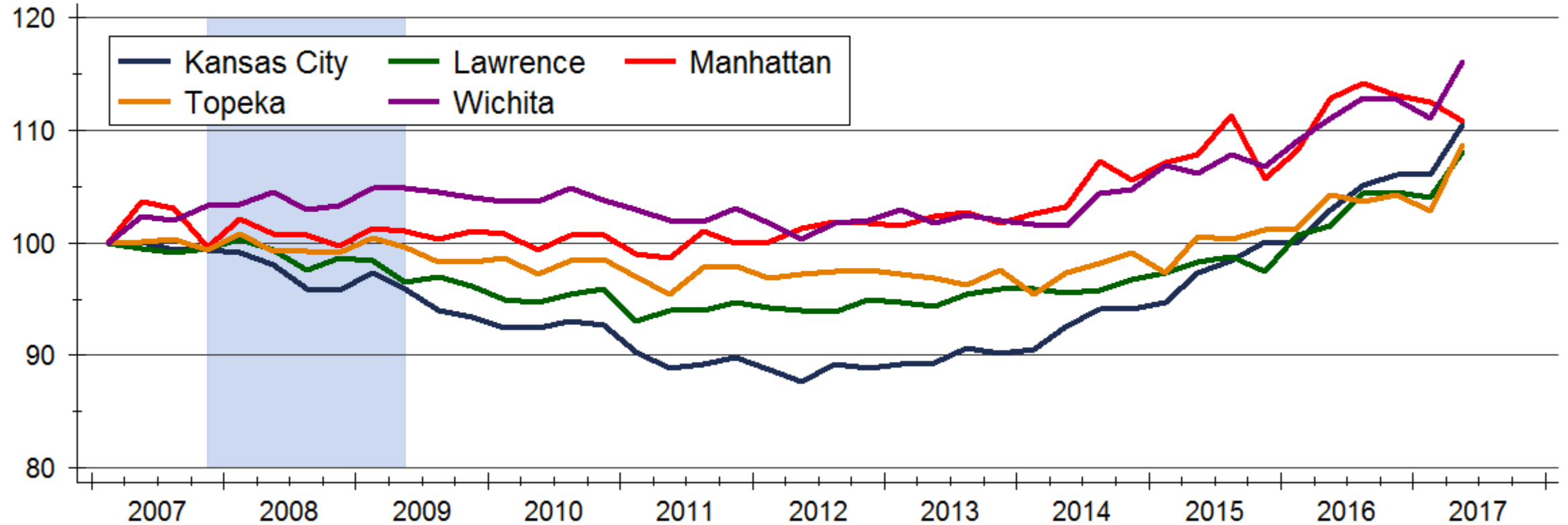
Median Price as Percent of List by Price Range



Source: Participating Kansas REALTOR® MLS Systems

Home Price Appreciation across Kansas

Index: 2007q1 = 100



Source: Federal Housing Finance Agency (FHFA)

WSU Center for Real Estate

Laying a Foundation for Real Estate in Kansas

www.wichita.edu/realestate



WICHITA STATE
UNIVERSITY
W. FRANK BARTON
SCHOOL OF BUSINESS

