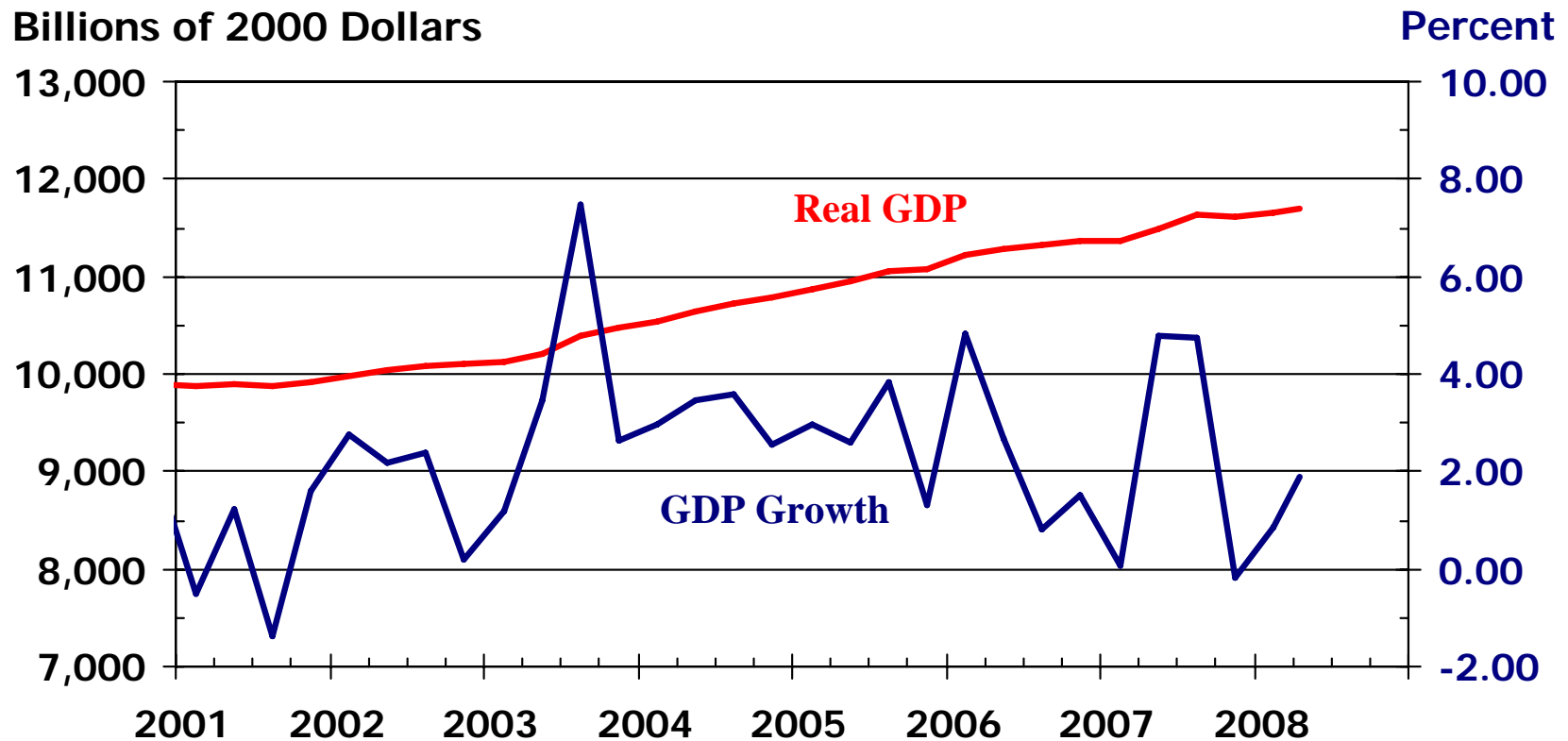


WSU Center for Real Estate 2008 Real Estate Roundtable

*W. Frank Barton School of Business
Wichita State University
August 15, 2008*



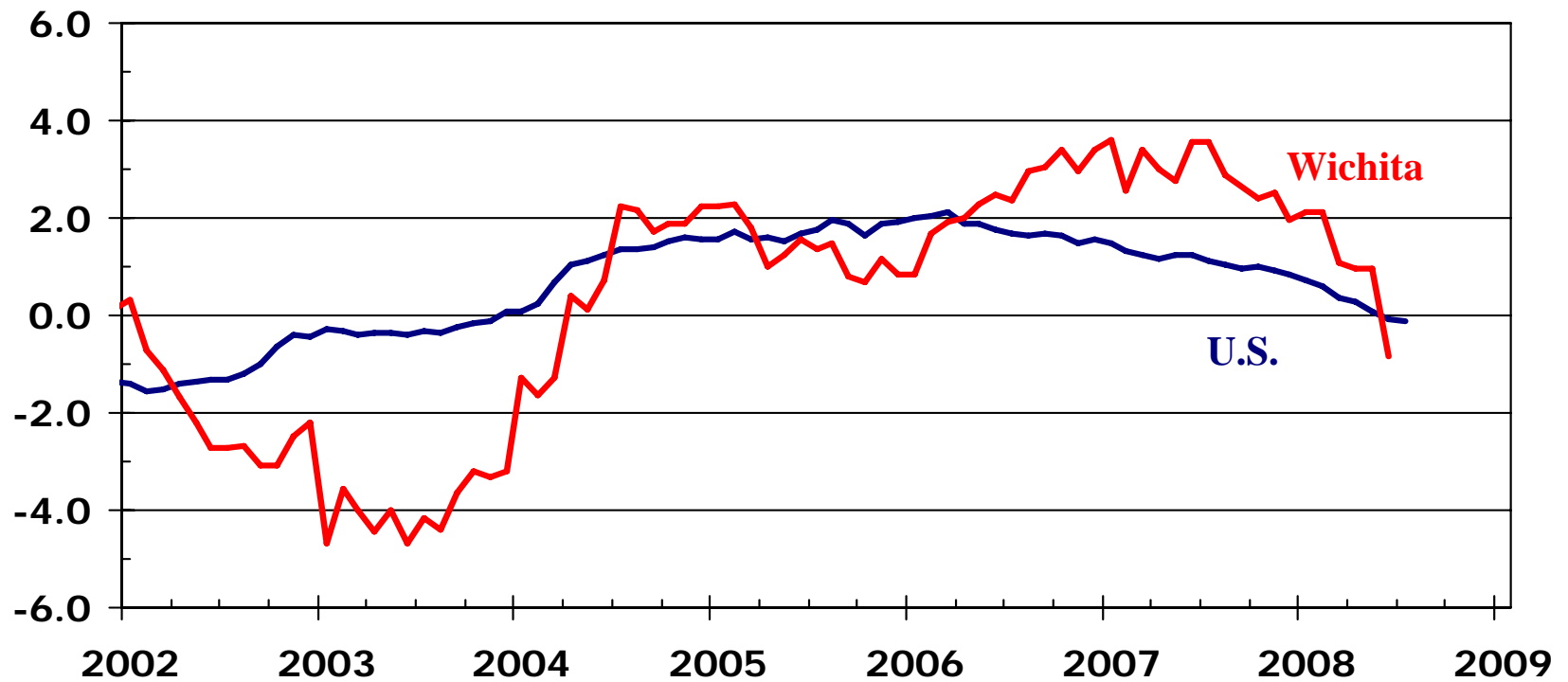
Real Gross Domestic Product



Source: Bureau of Economic Analysis

Employment Growth

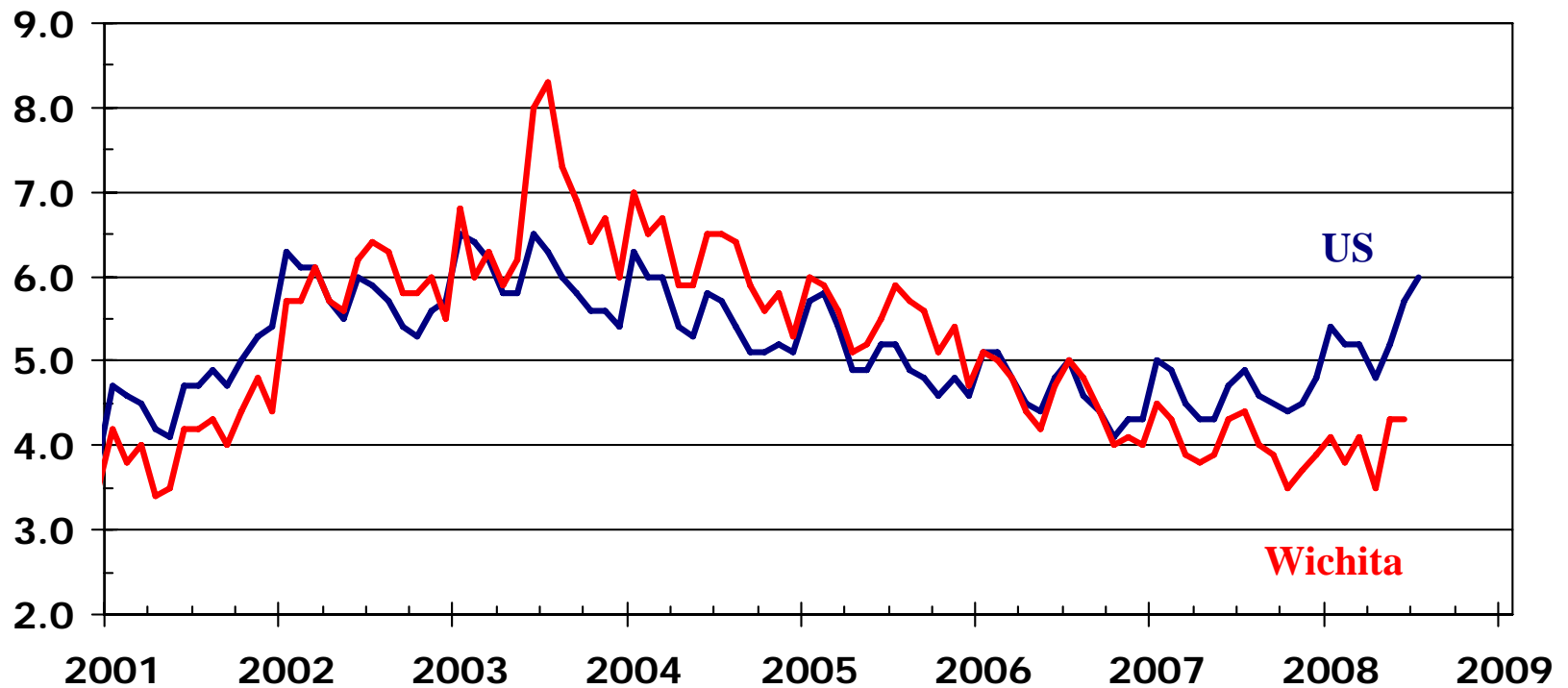
Year-over-Year Percentage Change



Sources: Kansas Department of Human Resources;
U.S. Bureau of Labor Statistics

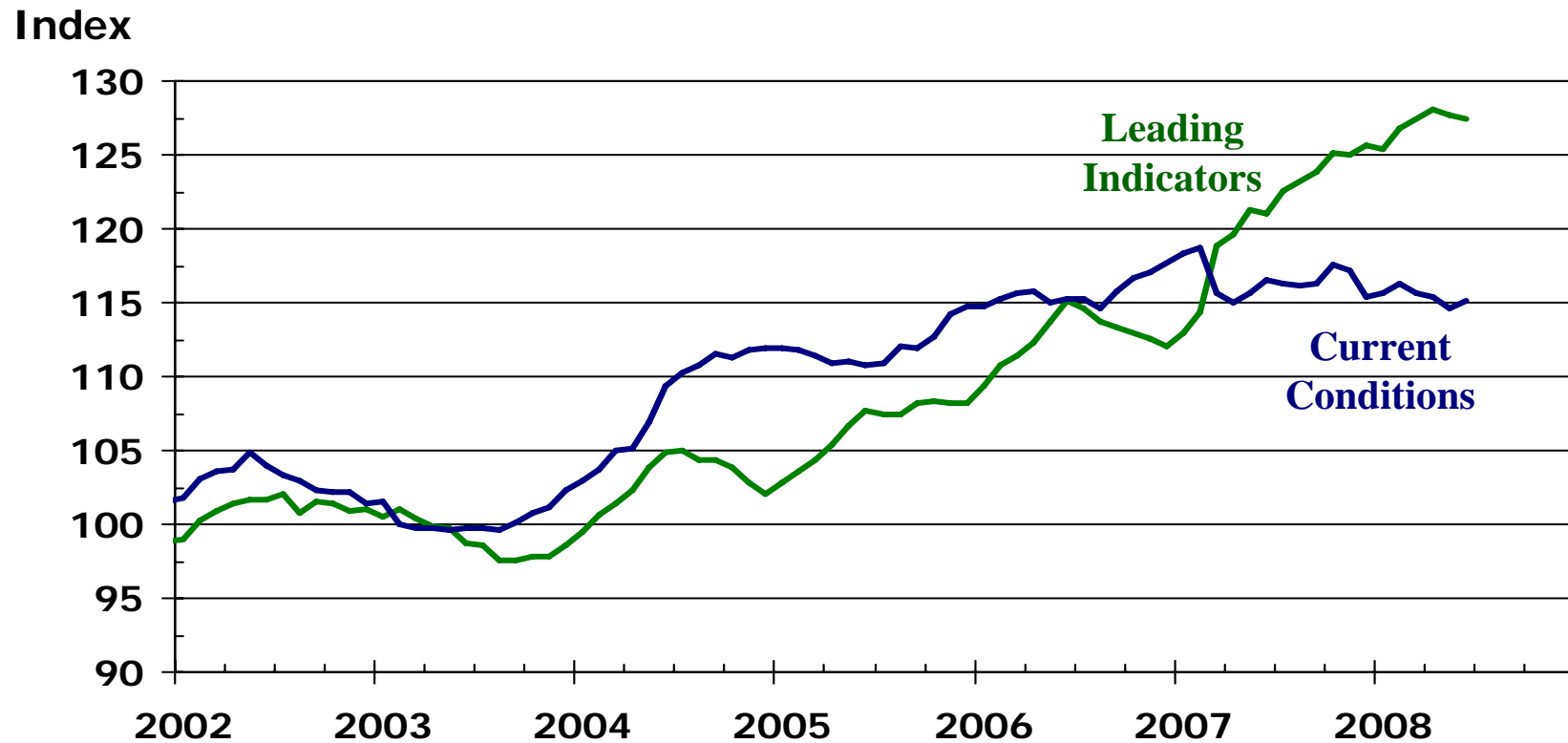
Unemployment Rate

Percent



Sources: Kansas Department of Human Resources;
U.S. Bureau of Labor Statistics

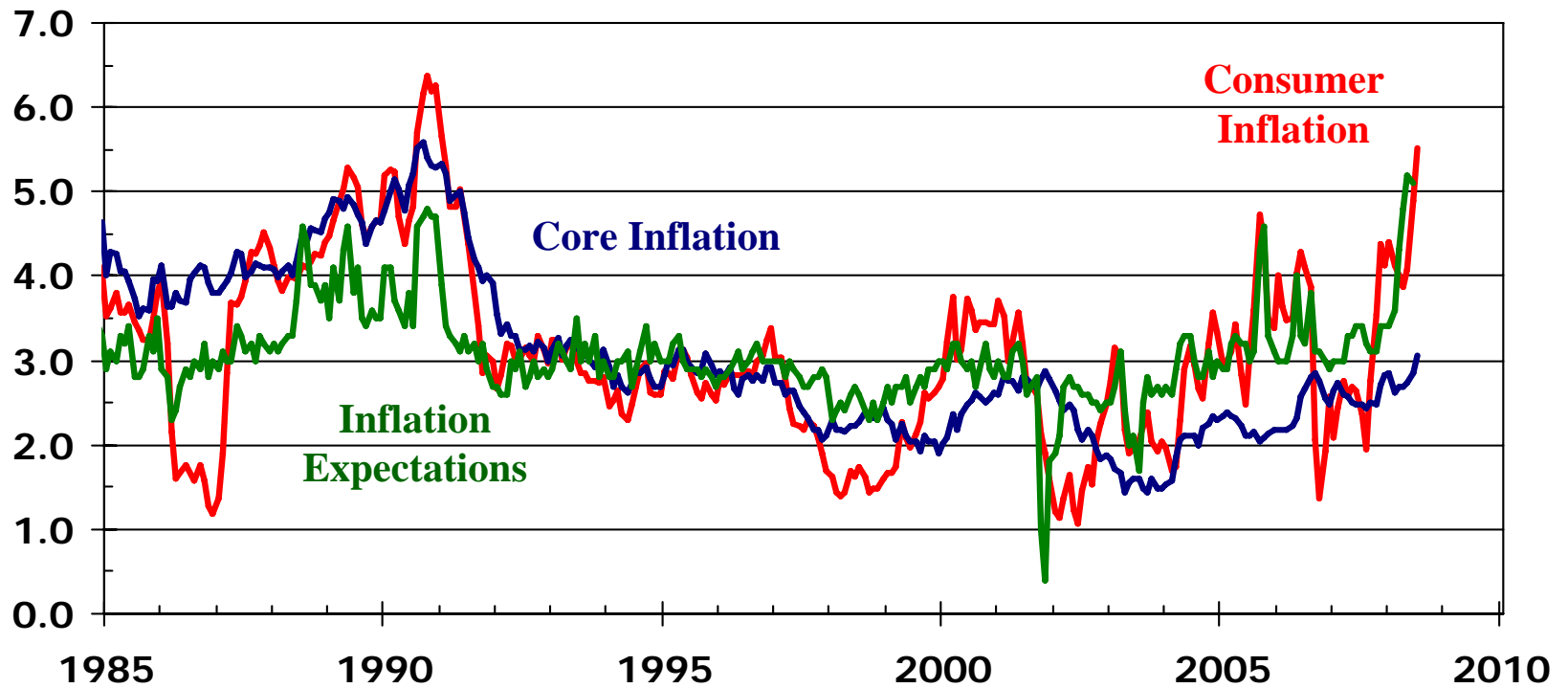
WSU Economic Indices



Source: WSU Center for Economic Development and Business Research

Consumer Inflation

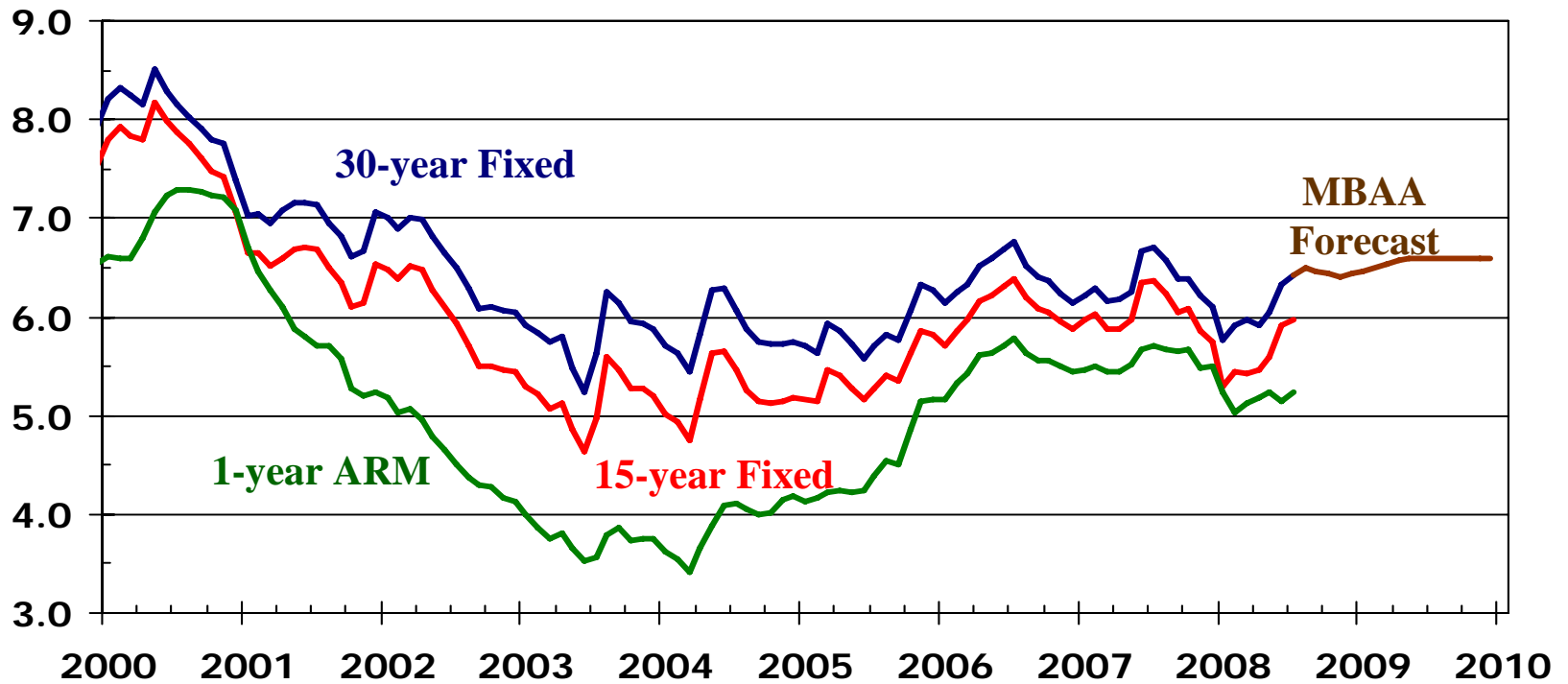
Percent



Sources: U.S. Bureau of Labor Statistics;
University of Michigan

Mortgage Rates

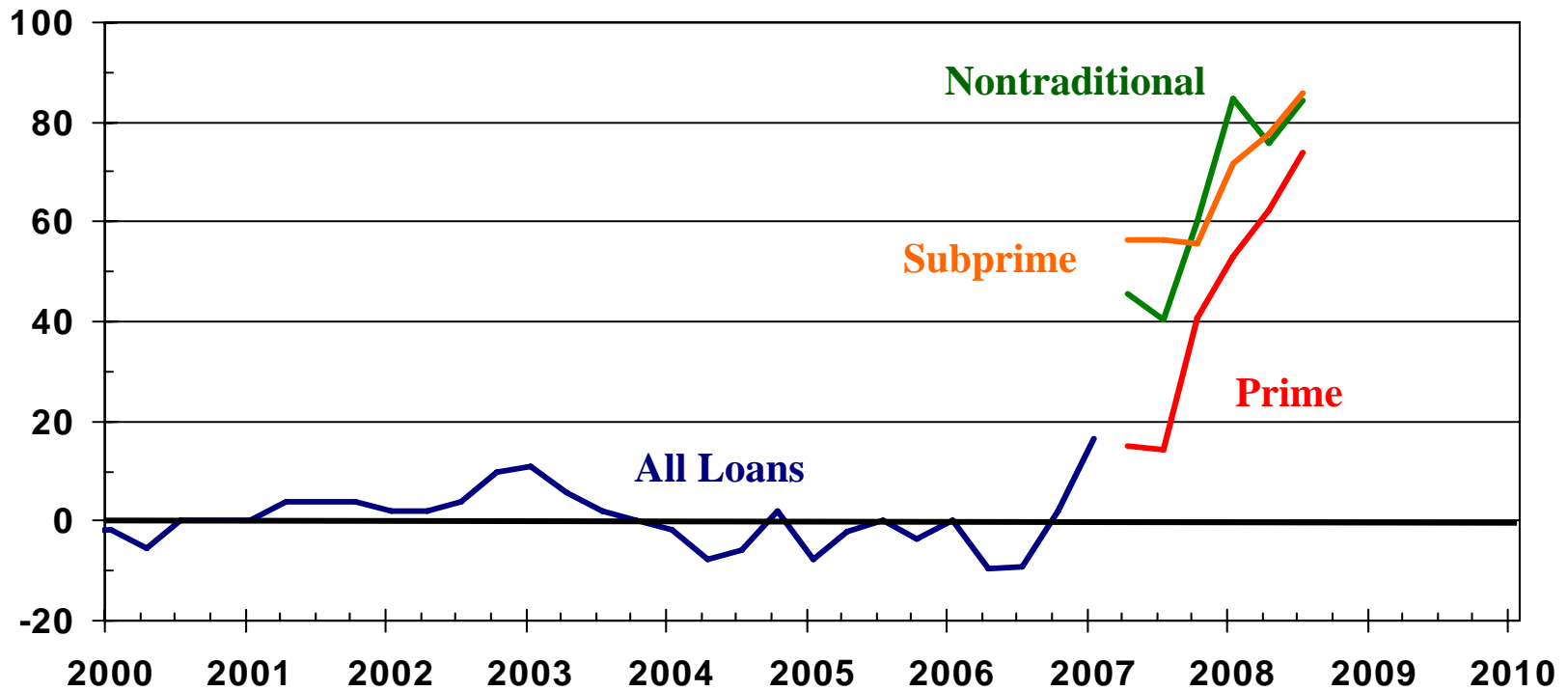
Percent



Sources: Freddie Mac; MBA

Mortgage Credit Conditions

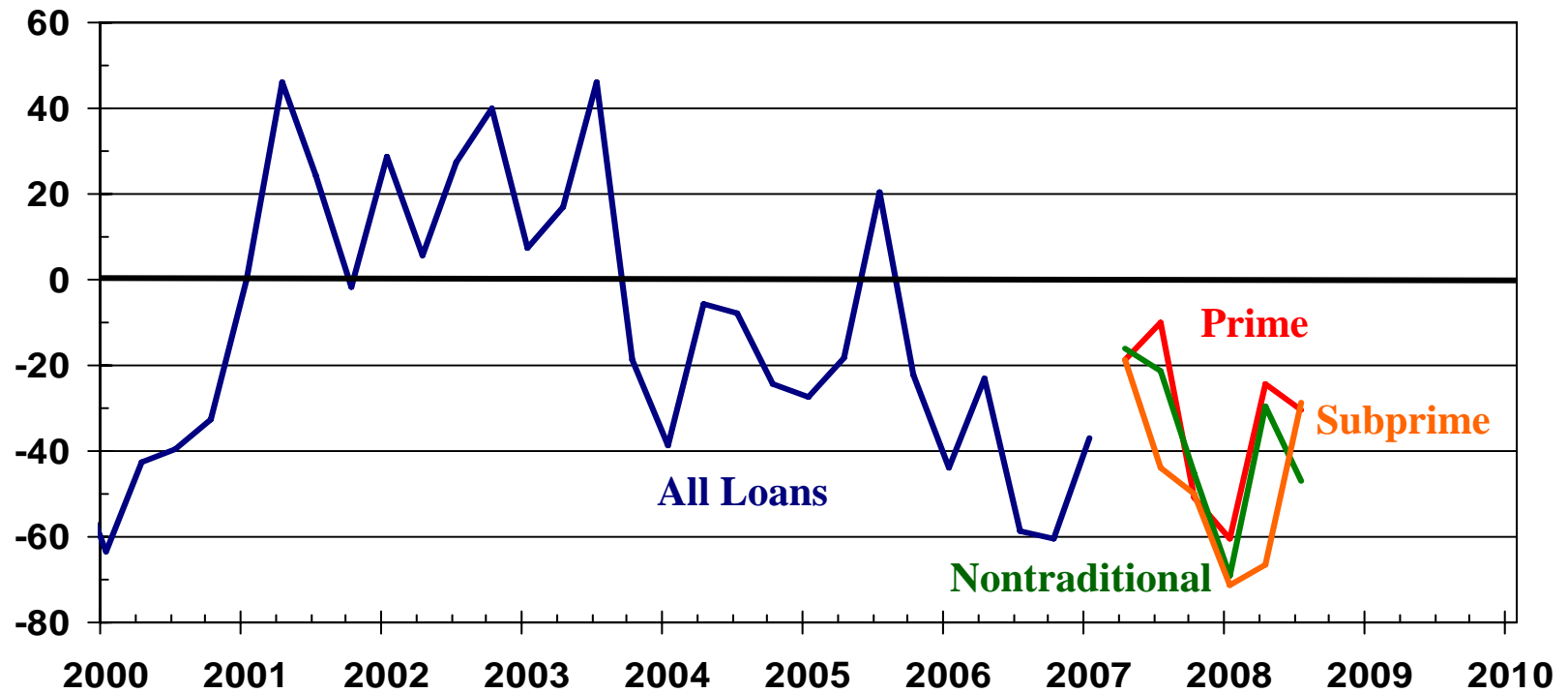
Net Percentage of Banks Reporting Tightening Standard for Mortgages



Source: Board of Governors of the Federal Reserve System

Mortgage Demand

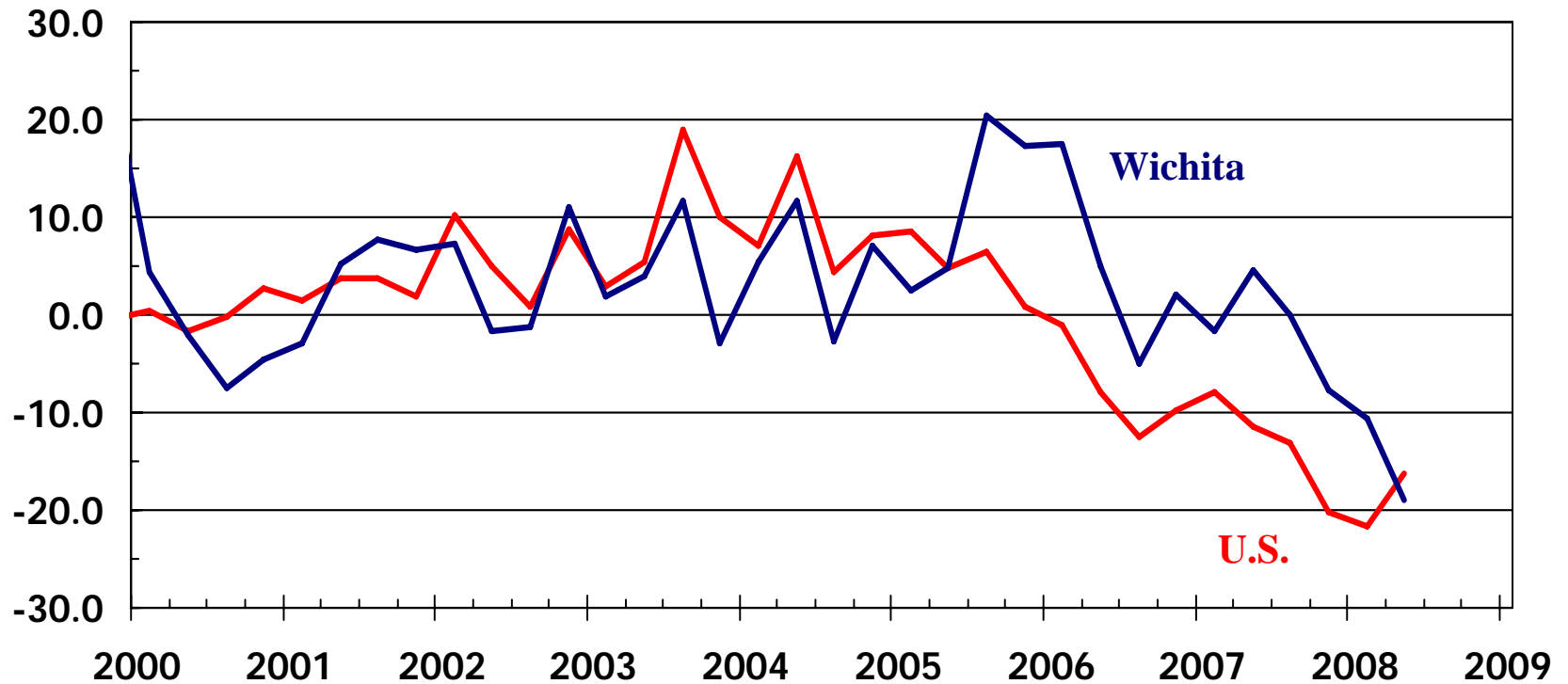
Net Percentage of Banks Reporting Stronger Demand for Mortgages



Source: Board of Governors of the Federal Reserve System

Existing Home Sales

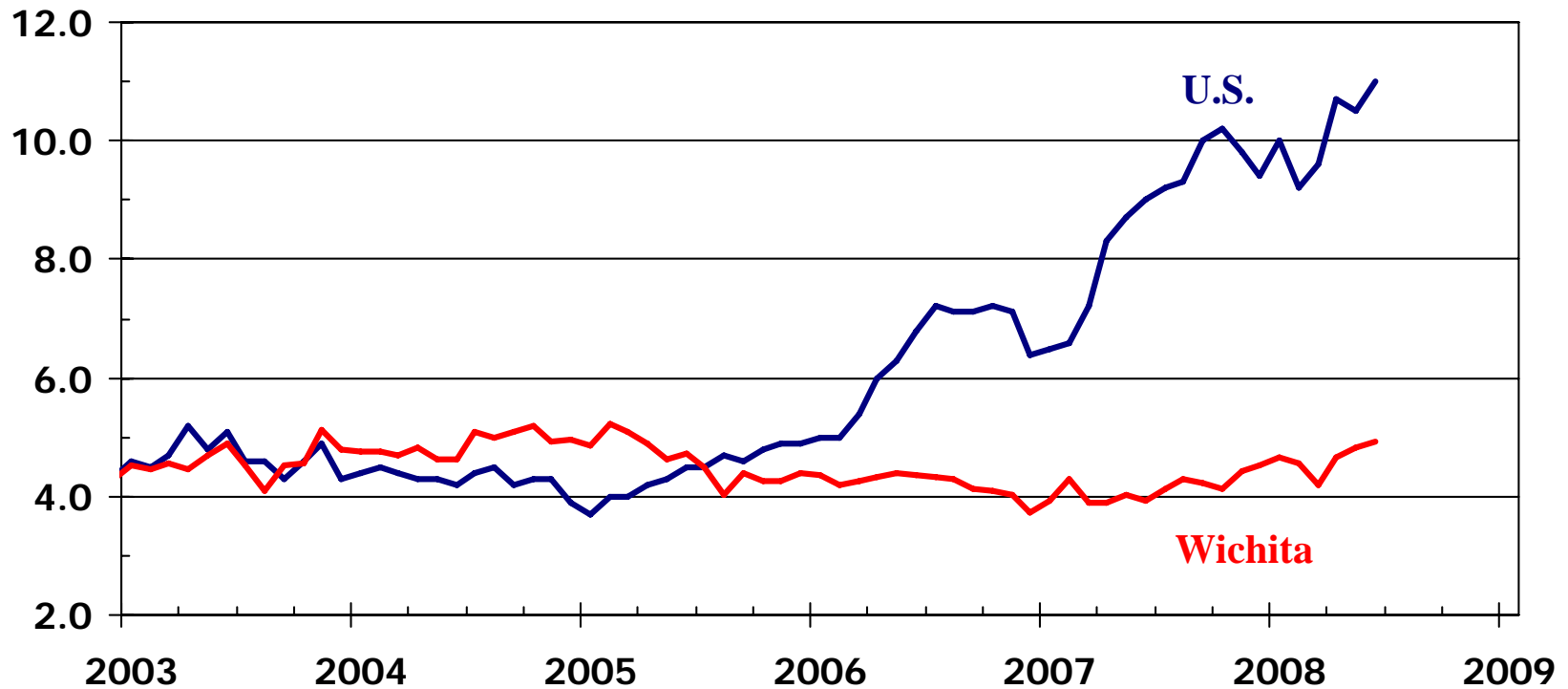
Year-over-year Percentage Change



Sources: NAR; KCRAR; SCK MLS

Inventory of Existing Homes Available for Sale

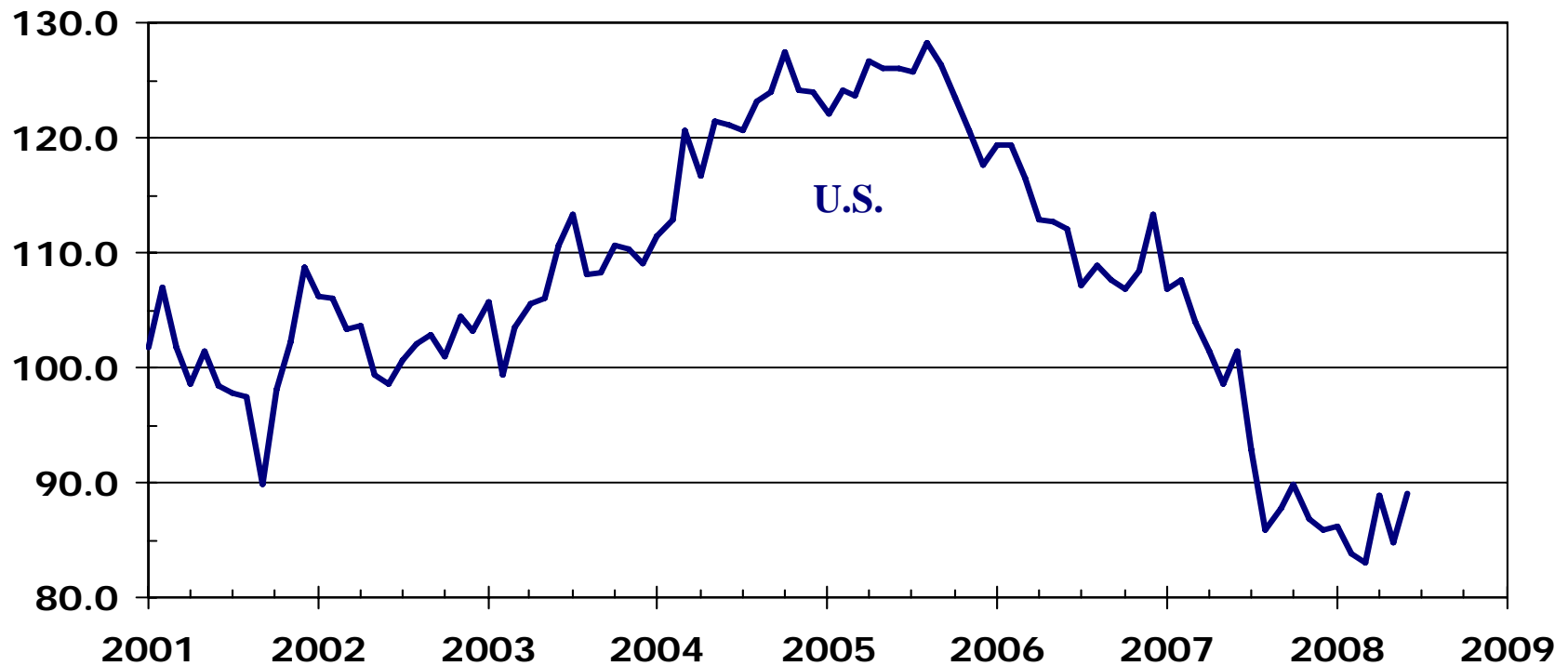
Months Supply (SA)



Sources: NAR; WSU Center for Real Estate
using data from KCRAR and SCK MLS

Pending Home Sales Index

Index (SA)

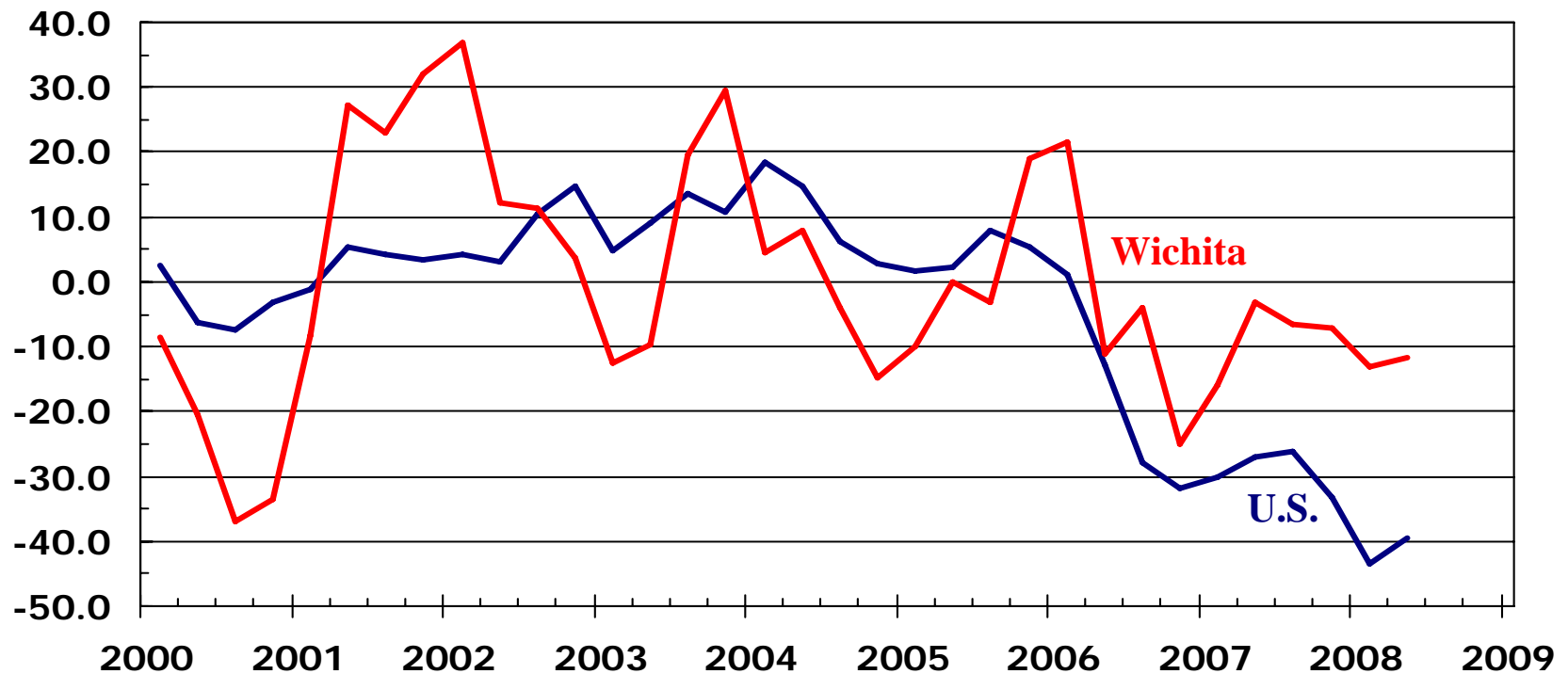


Source: NAR



New Home Construction

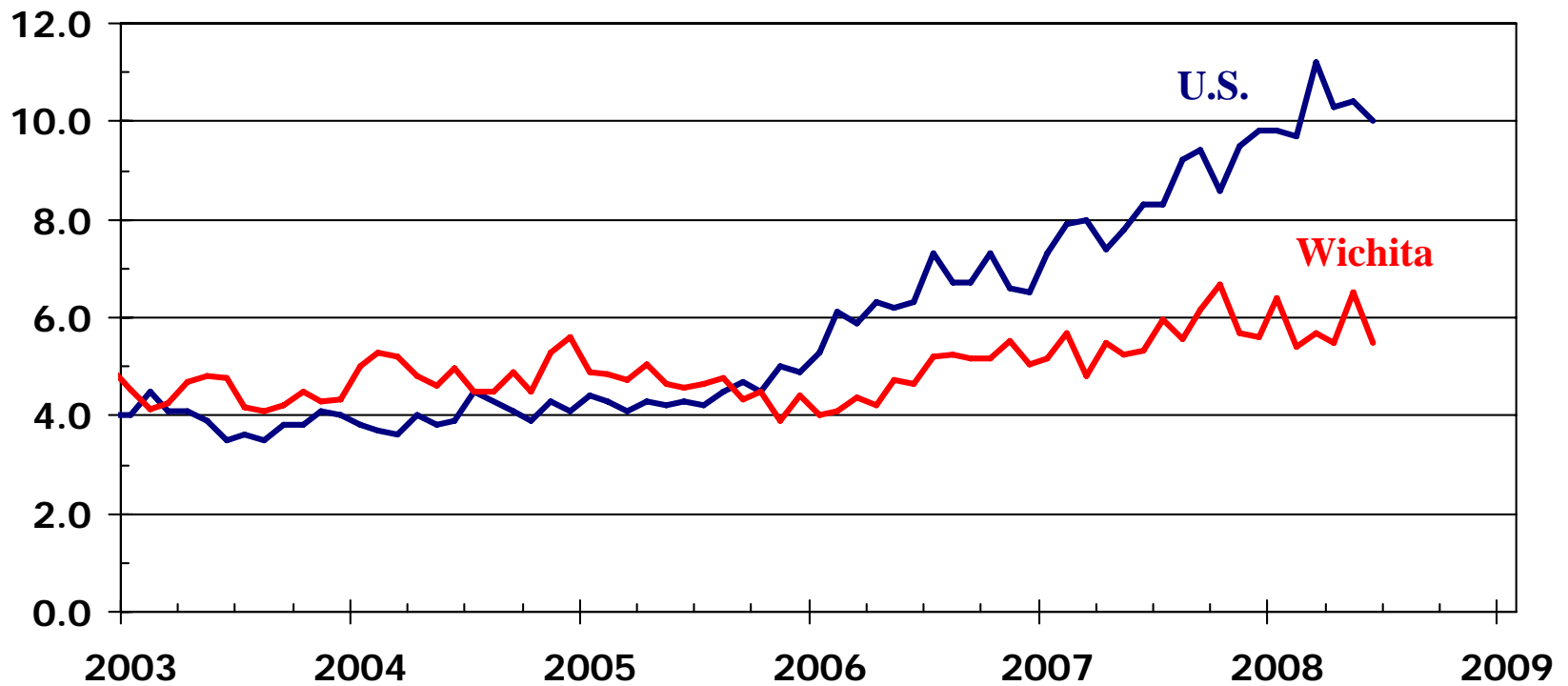
Year-over-year Percentage Change in Single-Family Building Permits



Sources: HUD; WABA

Inventory of New Homes Available for Sale

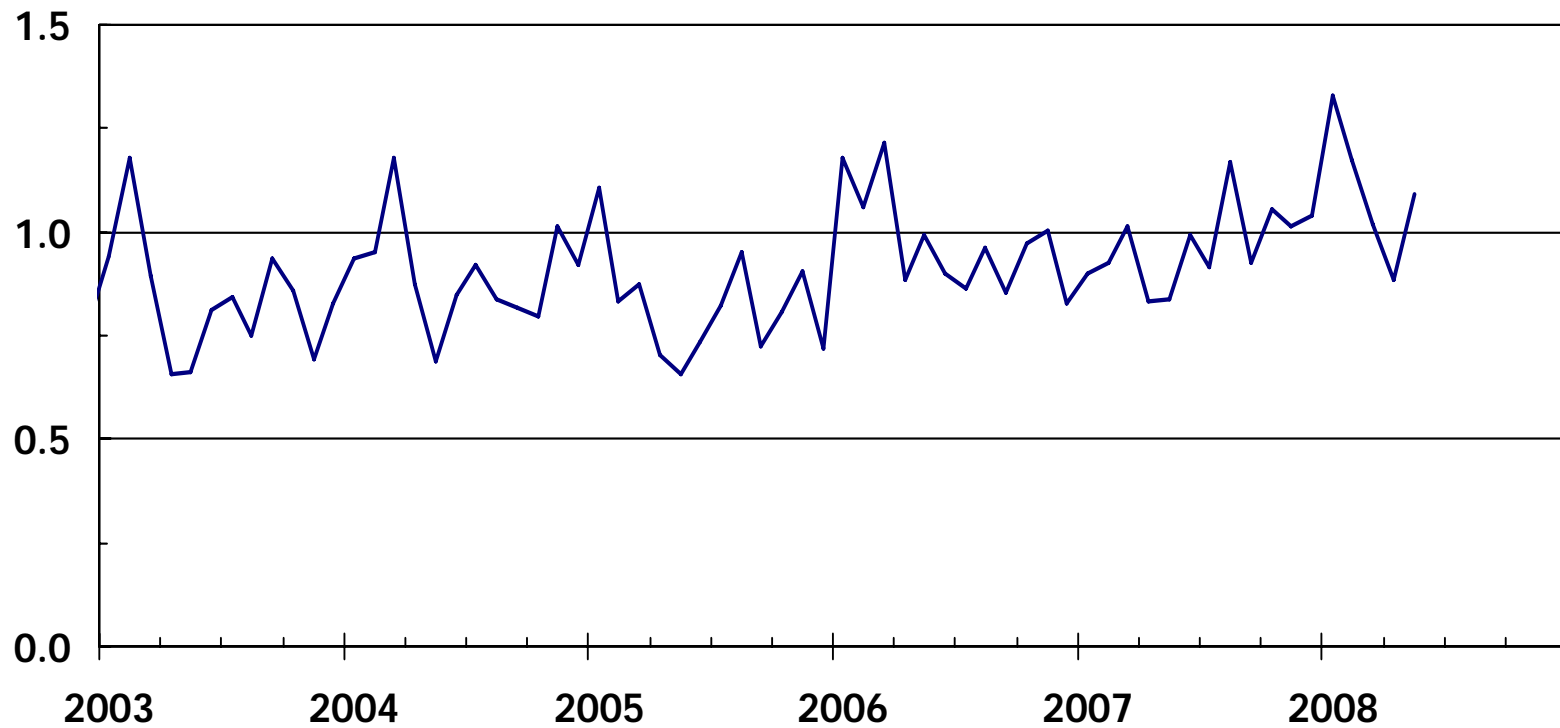
Months Supply (SA)



Sources: HUD; WSU Center for Real Estate
using data from KCRAR and SCK MLS

Sedgwick County Foreclosure Rate

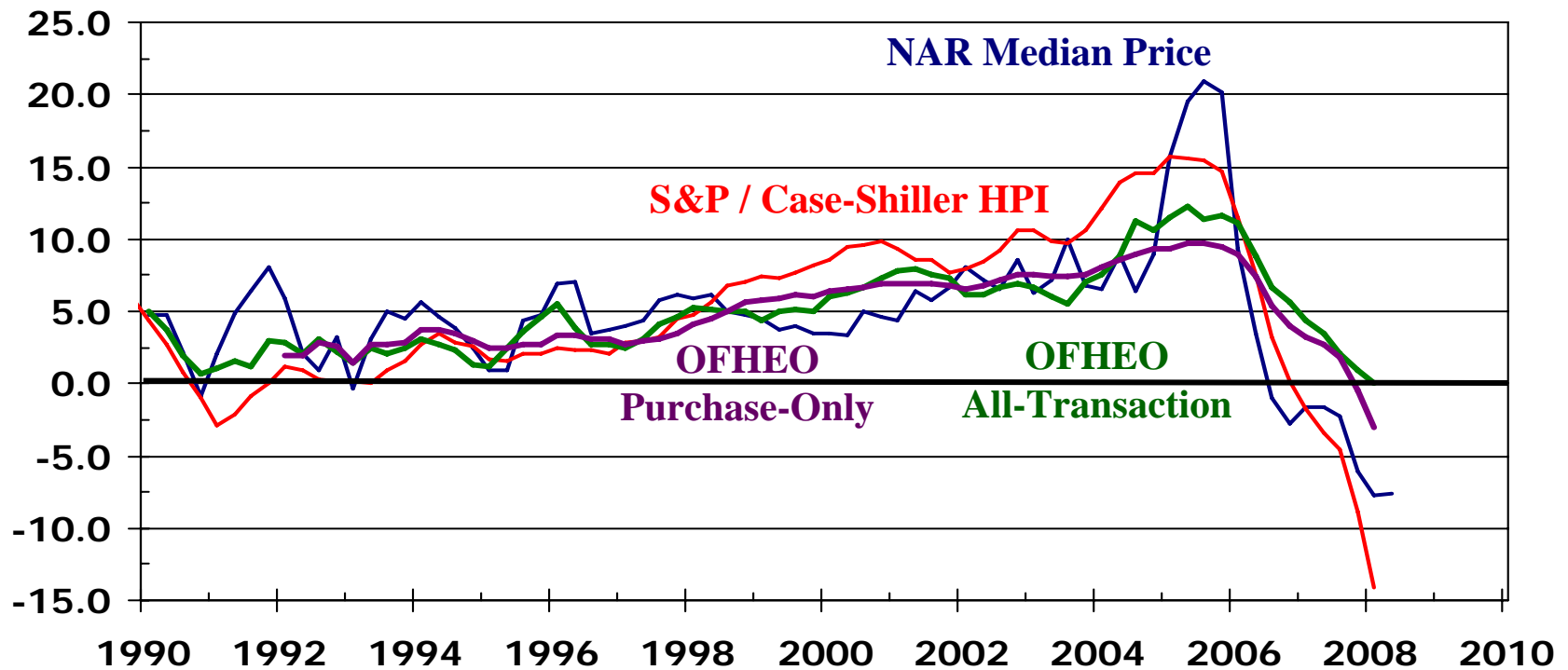
Foreclosures per 1,000 Mortgages over Past Five Years



Source: WSU Center for Real Estate using data from the Sedgwick County Register of Deeds

U.S. House Price Appreciation

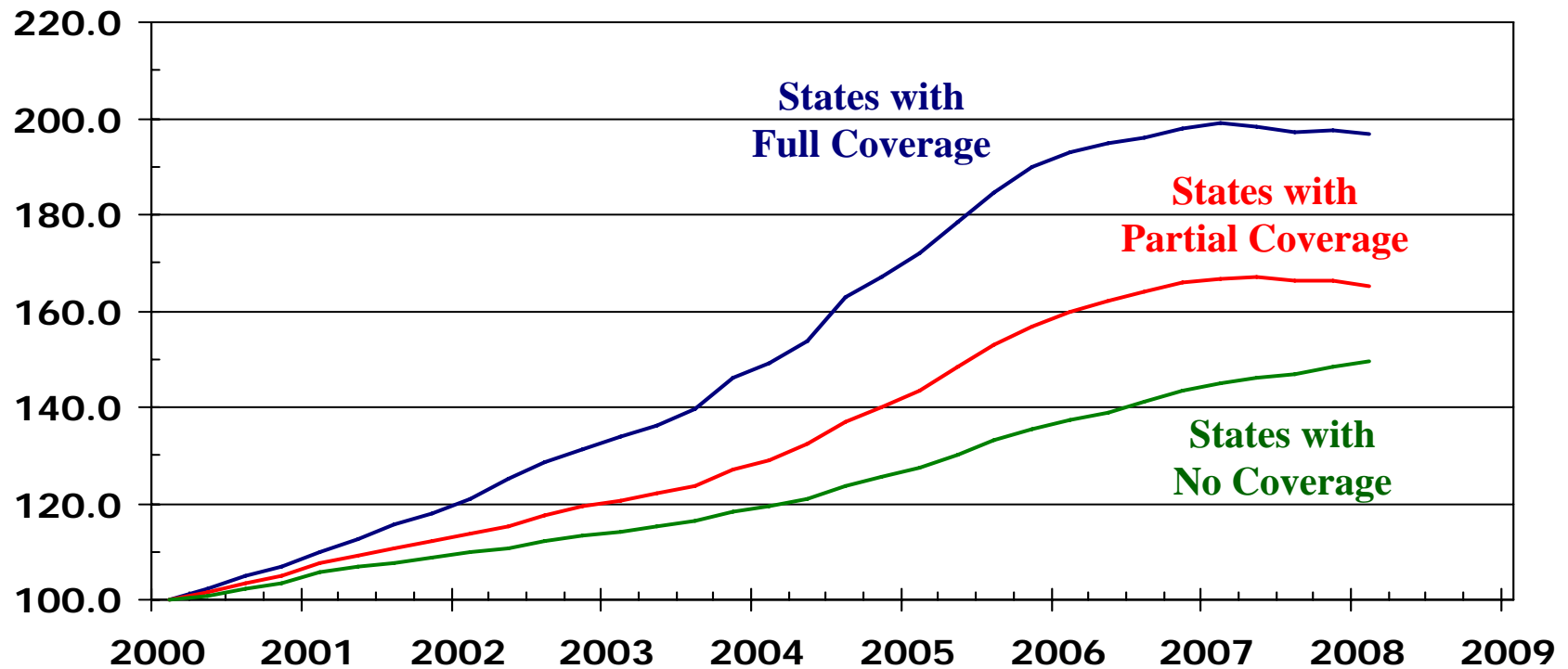
Year-over-year Percentage Change



Sources: NAR; S&P; OFHEO

OFHEO HPI by S&P Coverage

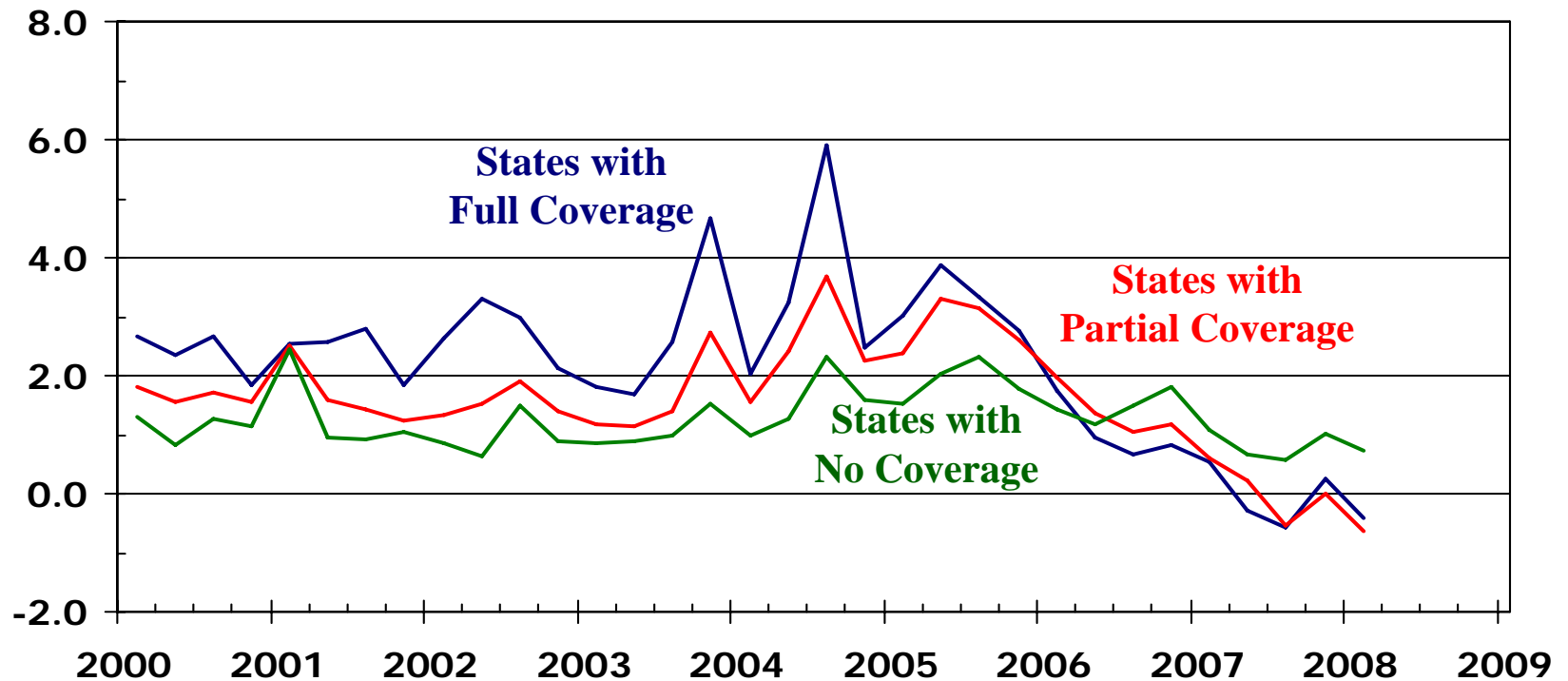
Index: 2000Q1 = 100



Source: WSU Center for Real Estate, using data from OFHEO and U.S. Census Bureau

OFHEO HPI by S&P Coverage

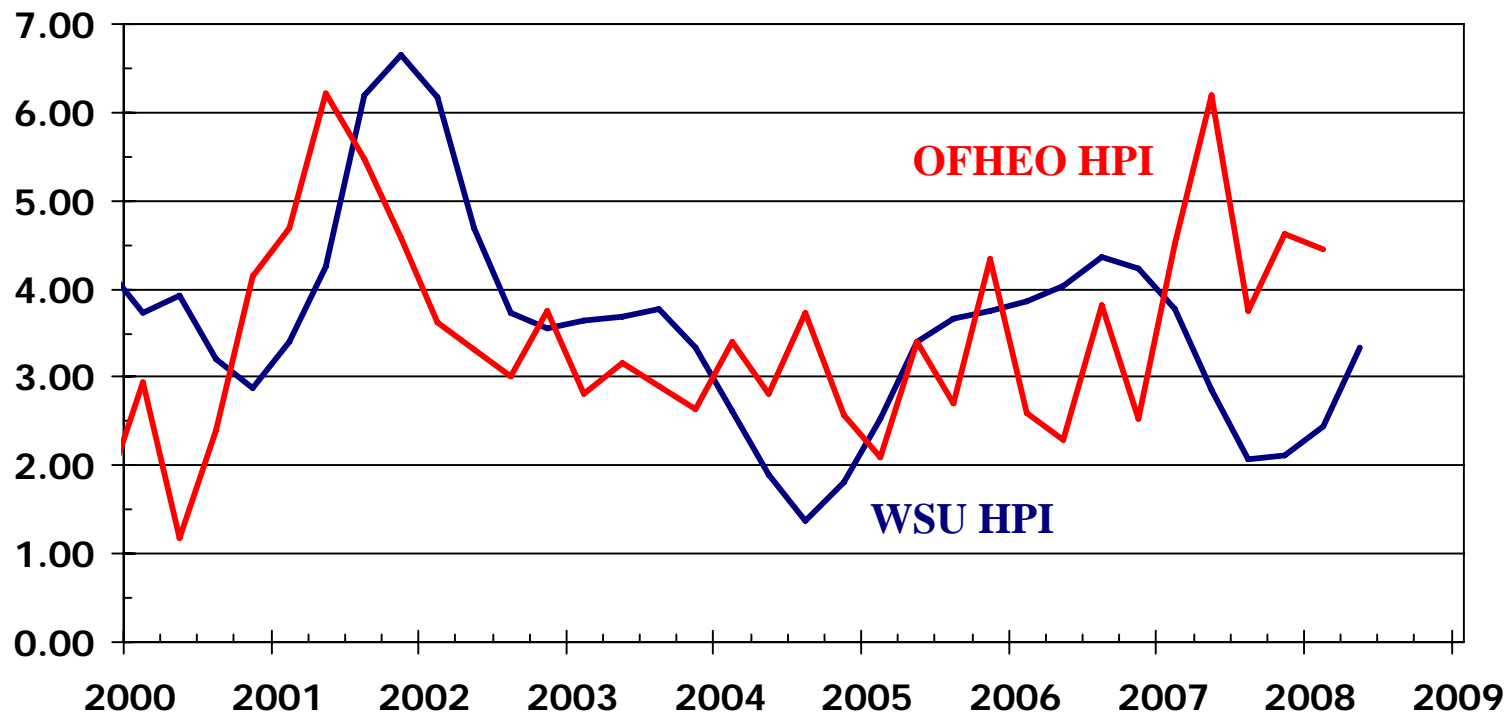
Quarter-over-Quarter Percentage Change



Source: WSU Center for Real Estate, using data from OFHEO and U.S. Census Bureau

Wichita Area Home Price Appreciation

Year-over-year Percentage Change



Sources: WSU Center for Real Estate;
Office of Federal Housing Enterprise Oversight

Wichita State University Center for Real Estate

*Laying a Foundation for
Real Estate in Kansas*



WICHITA STATE UNIVERSITY

