

# 2017 Kansas Housing Markets Forecast

Dodge City Regional  
Economic Outlook Conference  
November 3, 2016

Dr. Stanley D. Longhofer  
WSU Center for Real Estate



WICHITA STATE  
UNIVERSITY

W. FRANK BARTON  
SCHOOL OF BUSINESS

**Thanks to the sponsor of the  
Finney and Ford County reports:**



Security 1<sup>st</sup> Title



**Pulaski Bank**

*Home Lending*

# Thanks also to the following REALTOR® boards and MLS systems:

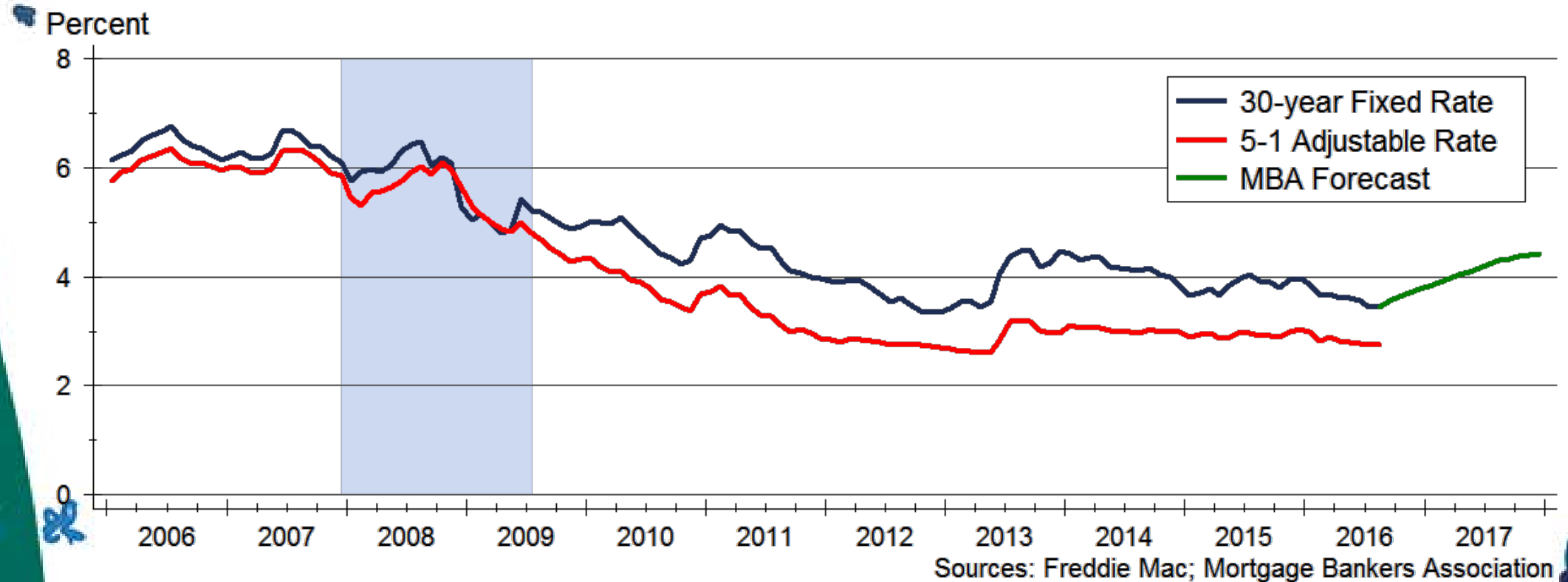


and participating  
REALTOR® MLS systems across  
Kansas



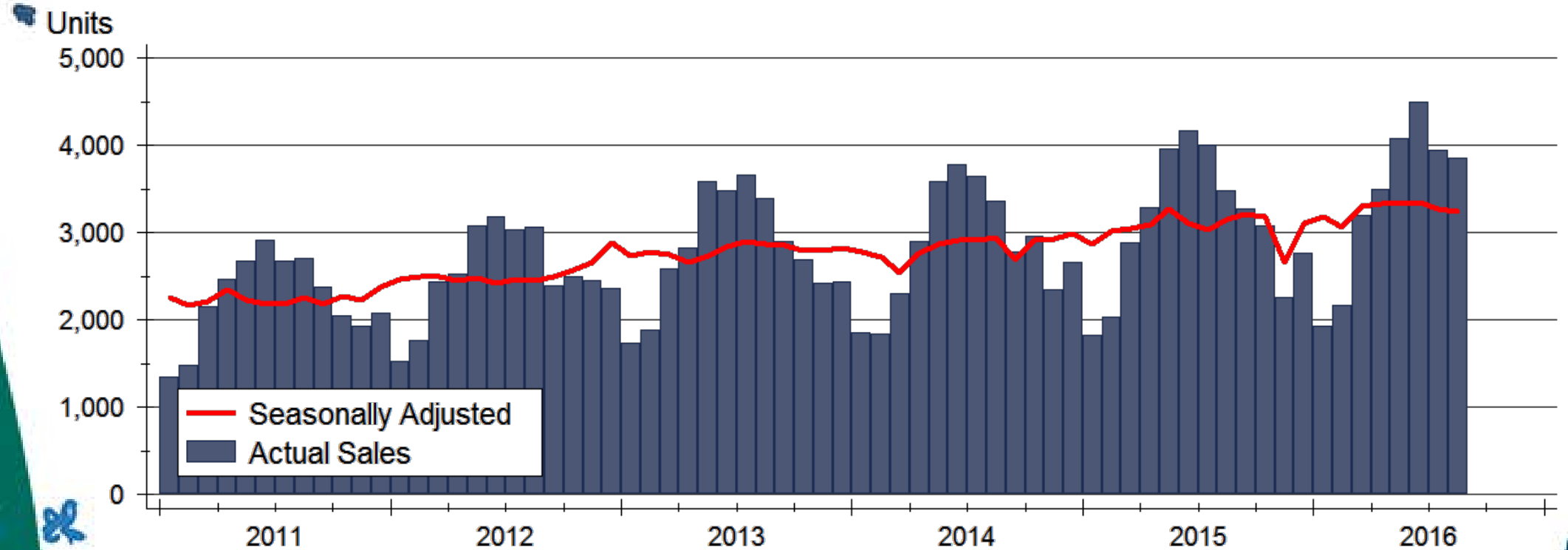
2017 Kansas Housing Markets Forecast

# Mortgage Rate Forecast



2017 Kansas Housing Markets Forecast

# Total Home Sales in Kansas



Source: Participating Kansas REALTOR® MLS systems

2017 Kansas Housing Markets Forecast

A decorative graphic featuring stylized flowers in shades of blue and green at the top. Below the flowers is a vertical bar chart with a green background and a white diagonal line. The y-axis is labeled 'Units' and ranges from 0 to 50 in increments of 10. The chart shows a single bar reaching the 50-unit mark. At the bottom of the graphic is the logo for 'CENTRE fo REAL ESTATE' with a stylized city skyline above the text.



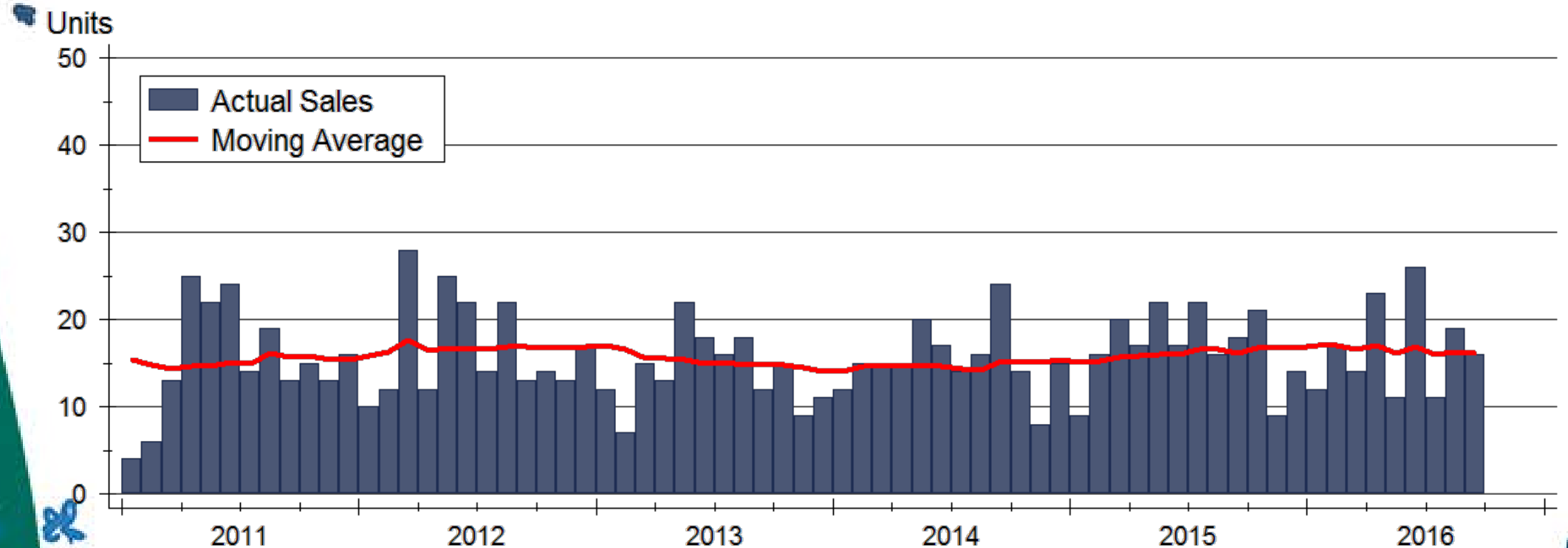
CENTER *for* REAL ESTATE



**WICHITA STATE  
UNIVERSITY**  
*W. FRANK BARTON  
SCHOOL OF BUSINESS*



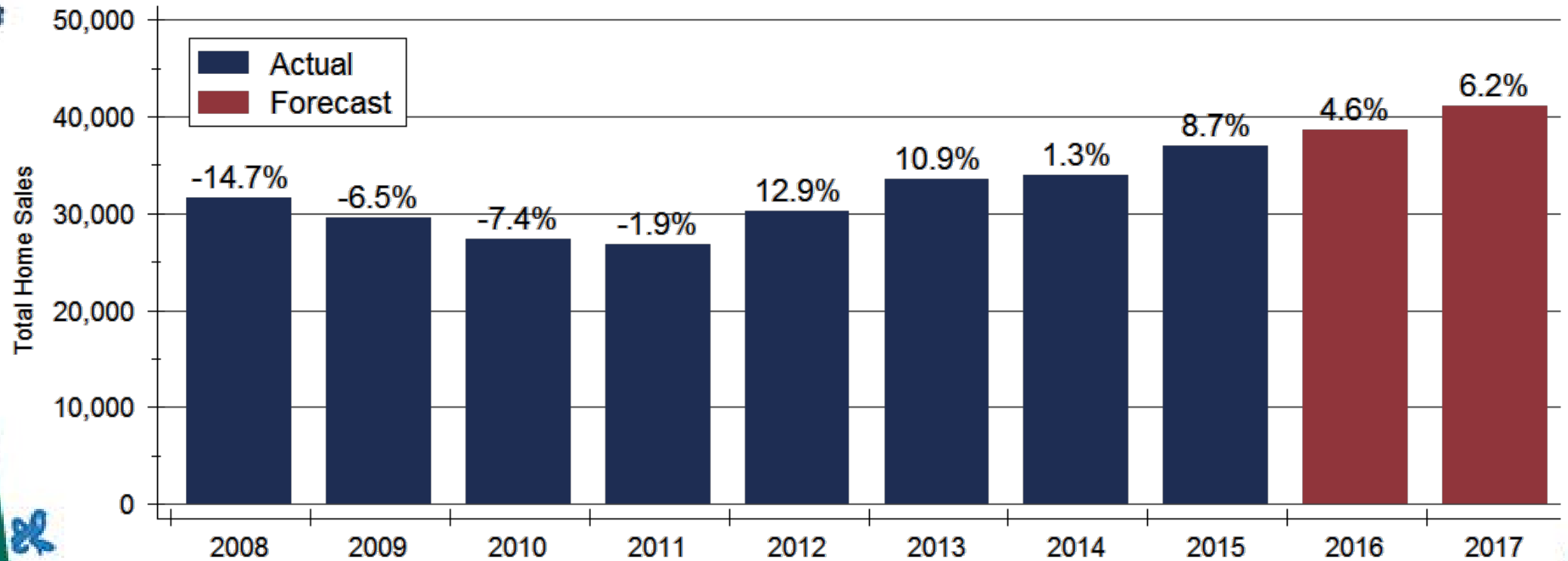
# Ford County Home Sales



Source: Dodge City Board of REALTORS® and Participating Kansas REALTOR® MLS systems

2017 Kansas Housing Markets Forecast

# Kansas Home Sales Forecast

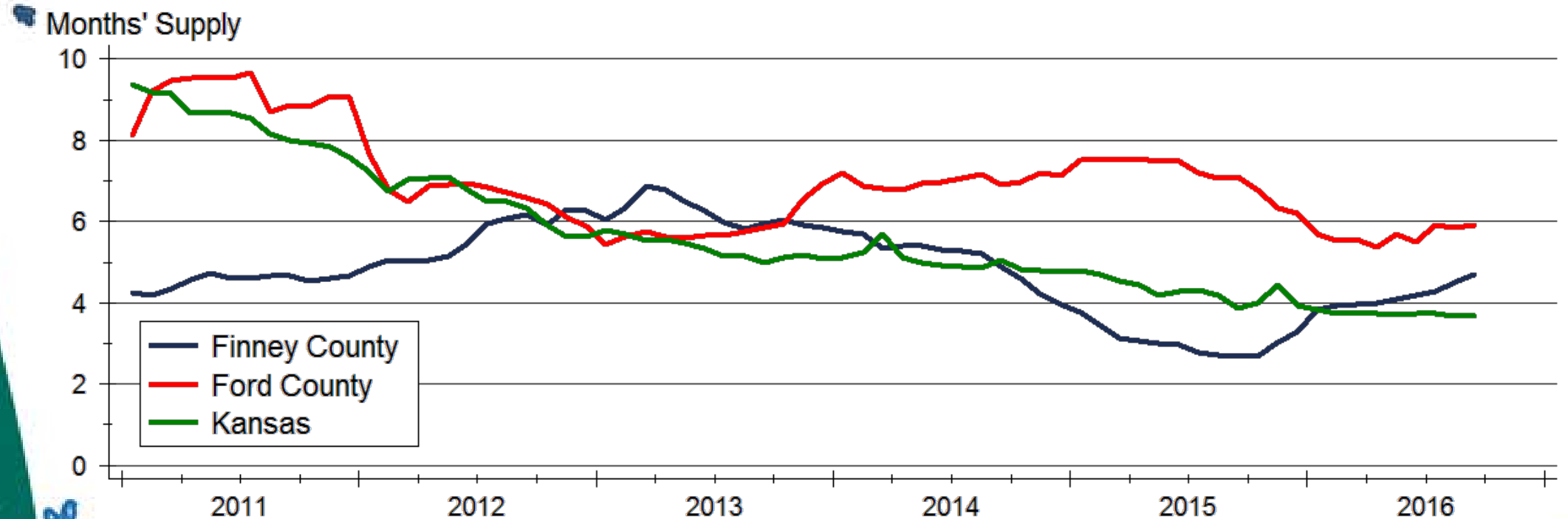


Sources: WSU Center for Real Estate and Participating Kansas REALTOR® MLS systems

2017 Kansas Housing Markets Forecast



# Inventory of Homes for Sale

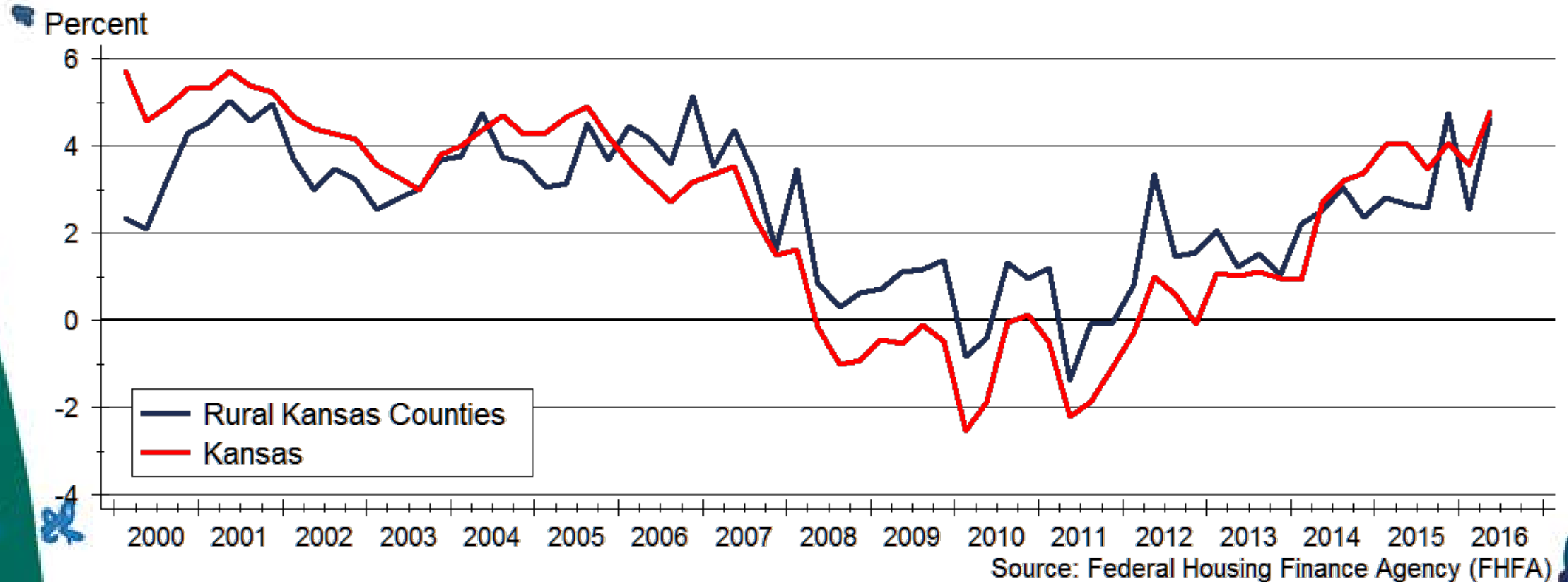


Source: Participating Kansas REALTOR® MLS systems

Note: County data are 12-month trailing moving averages; Kansas data are seasonally adjusted

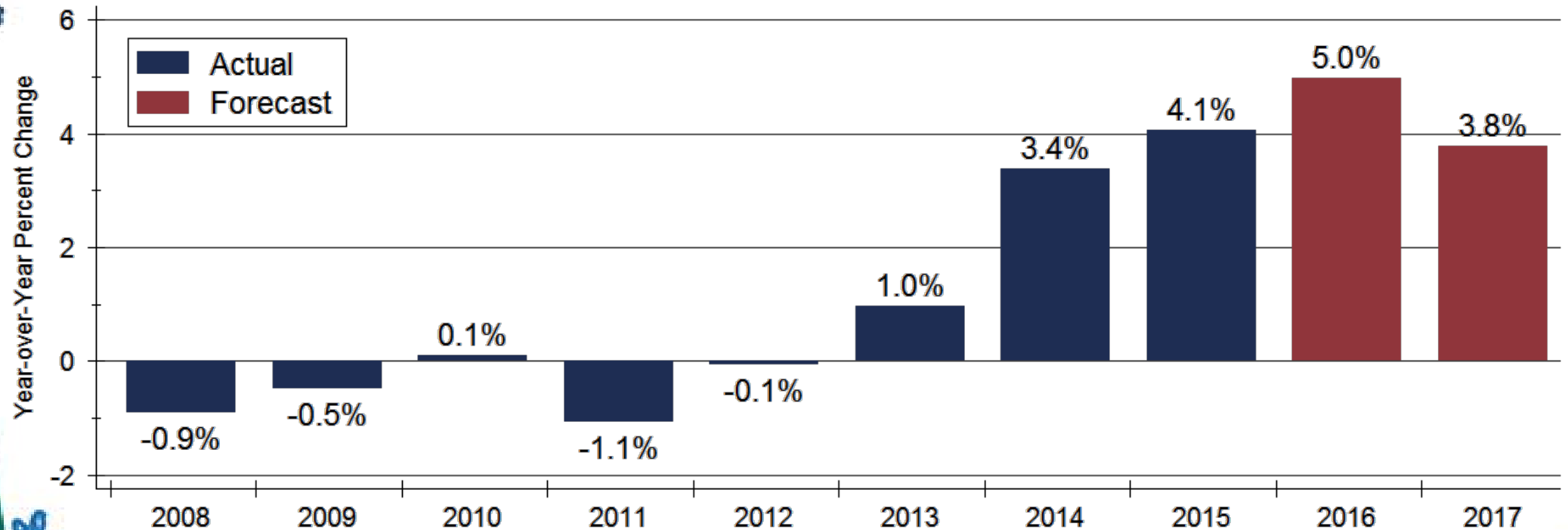
2017 Kansas Housing Markets Forecast

# Home Price Appreciation



2017 Kansas Housing Markets Forecast

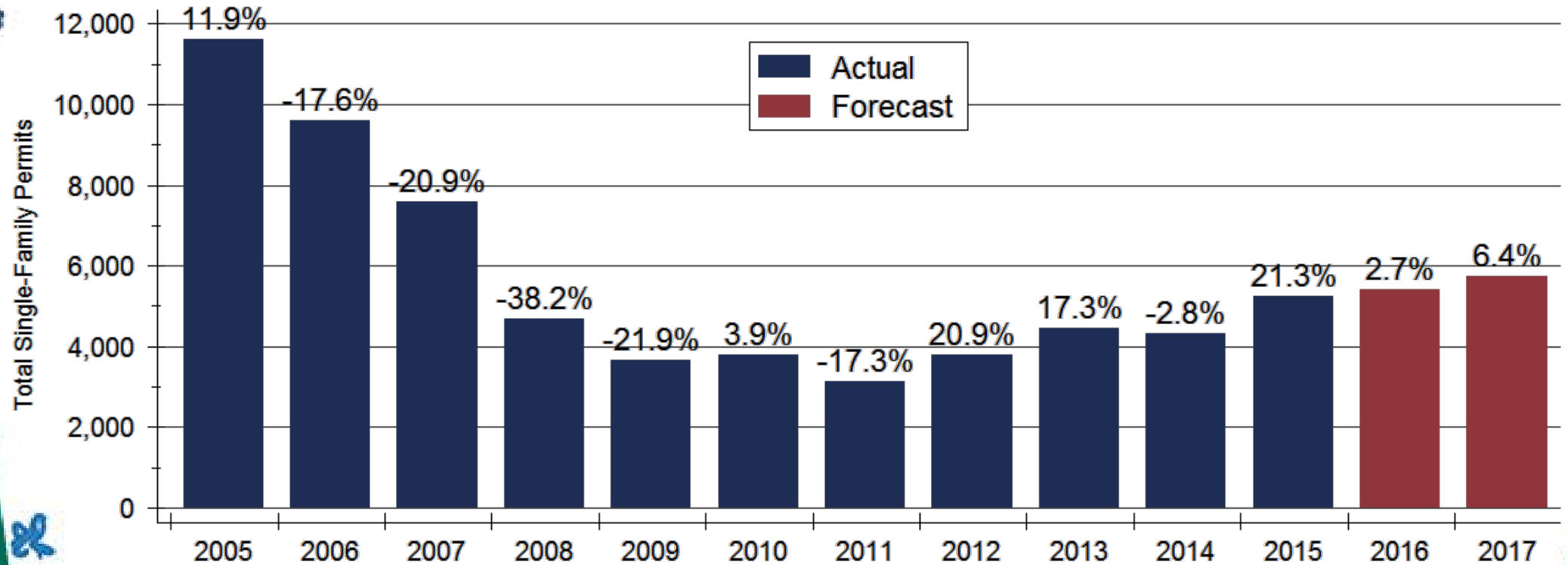
# Kansas Home Price Forecast



Sources: WSU Center for Real Estate and Federal Housing Finance Agency  
Appreciation calculated using 4<sup>th</sup> quarter values of the FHFA all-transactions house price index

2017 Kansas Housing Markets Forecast

# Kansas New Home Construction Forecast



Sources: WSU Center for Real Estate and U.S. Bureau of the Census

2017 Kansas Housing Markets Forecast

# Kansas Housing Forecast

	<b>2014 Actual</b>	<b>2015 Actual</b>	<b>2016 Forecast</b>	<b>2017 Forecast</b>
Total Home Sales	34,017 units +1.3%	36,992 units +8.7%	38,680 units +4.6%	41,090 units +6.2%
SF Building Permits	4,334 units -2.8%	5,257 units +21.3%	5,400 units +2.7%	5,745 units +6.4%
Home Price Appreciation	+3.4%	+4.1%	+5.0%	+3.8%

Sources: Participating Kansas REALTOR® MLS Systems; U.S. Bureau of the Census; Federal Housing Finance Agency; WSU Center for Real Estate

2017 Kansas Housing Markets Forecast

# 2017 Major Market Forecasts

	KC	Lawrence	Manhattan	Topeka	Wichita
Total Home Sales	38,460 units +4.5%	1,510 units +7.9%	1,050 units +6.1%	3,530 units +2.0%	10,800 units +5.1%
SF Building Permits	5,810 units +4.0%	220 units -2.2%	320 units +3.2%	275 units +0.0%	900 units -2.7%
Home Price Appreciation	+4.2%	+4.1%	+4.7%	+1.9%	+3.5%

Sources: Heartland MLS; Lawrence Board of REALTORS®; Manhattan Association of REALTORS®; Sunflower Association of REALTORS®; South Central Kansas MLS; U.S. Bureau of the Census; Federal Housing Finance Agency; WSU Center for Real Estate

2017 Kansas Housing Markets Forecast



# WSU Center for Real Estate

## Laying a Foundation for Real Estate in Kansas



WICHITA STATE  
UNIVERSITY

W. FRANK BARTON  
SCHOOL OF BUSINESS

